

Welcome!

Airport Metro Connector
Construction Update Meeting
December 20, 2023



Housekeeping

**Today's meeting is being recorded.
The recording and PDF will be posted on metro.net this evening.**



Attendee cameras are off and microphones are muted.



During the meeting, questions can be submitted using the Q&A icon.

Metro's Customer Experience Plan

We want to be your ride, and we know we have to earn it, every single day.

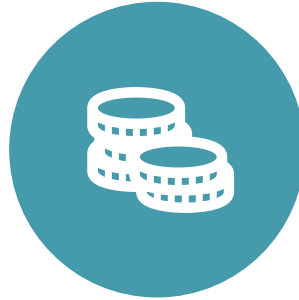
See how we're improving your experience at metro.net/cxhub.



Annual Budget Survey is Underway



EXPLORE THE BUDGET



GUIDE BUDGET DECISIONS



[MYBUDGET.METRO.NET/ONLINE](https://mybudget.metro.net/online)





Construction Update Meeting

AIRPORT METRO CONNECTOR CONSTRUCTION PROJECT





Code of Conduct

Metro is committed to ensuring that all participants can fairly and clearly share ideas, comments and concerns about this project. To provide a safe and equitable process, we are asking for your help.

During this meeting, please:

- > **Respect the format of the meeting and allow everyone an opportunity to comment**

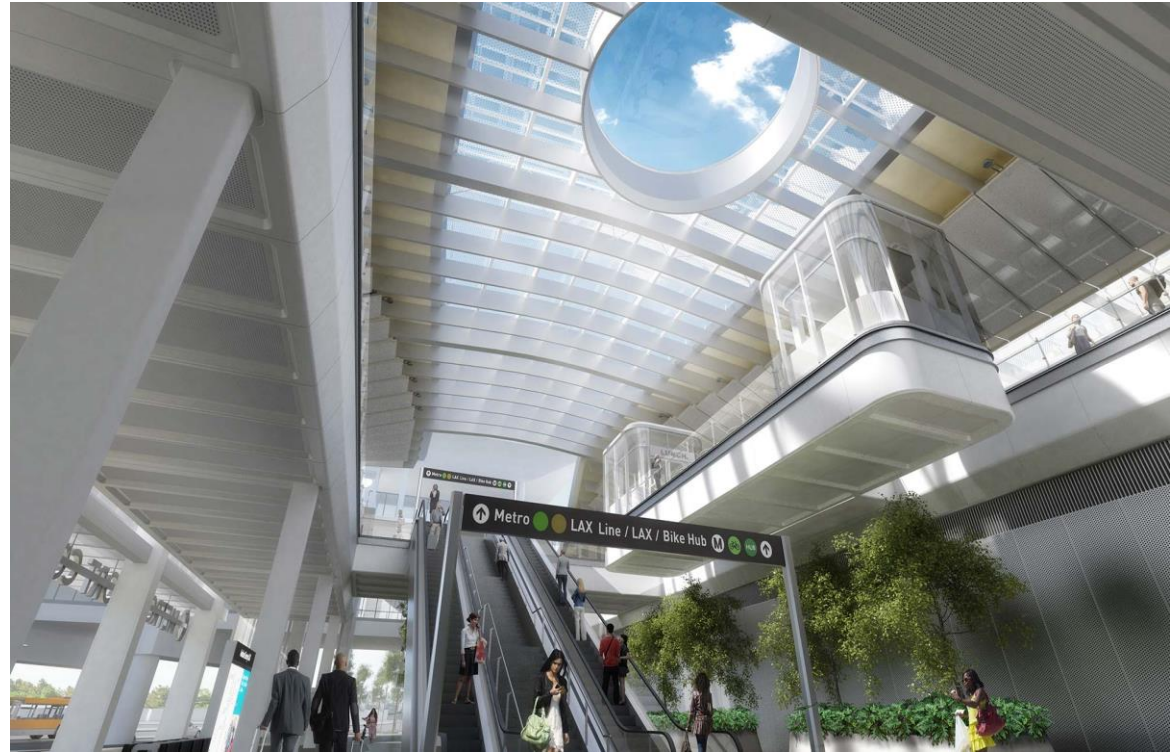




THANK YOU

Agenda

- > Introduction
- > Project Background
- > Current Status
- > State of Good Repair Project
- > Questions



Project Overview

- > The Metro K Line Project is a new 8.5-mile, eight station light rail line linking Metro's C Line to the E Line
- > On October 7, 2022 the Metro K Line began operating between Expo/Crenshaw and Westchester/Veterans stations
- > A free bus shuttle connects the Westchester/Veterans and Aviation/LAX stations



Project Overview

- > **Metro K Line connection to the Metro C Line anticipated in late 2024**
- > **Airport Metro Connector (AMC) is now under construction, with an anticipated late 2024 opening**
- > **Located at 96th St and Aviation Bl**
- > **Project budget of \$898M**
- > **Will feature**
 - > **Bike Hub**
 - > **Customer service center**
 - > **Connections to regional carriers**
 - > **Commercial space and more.**



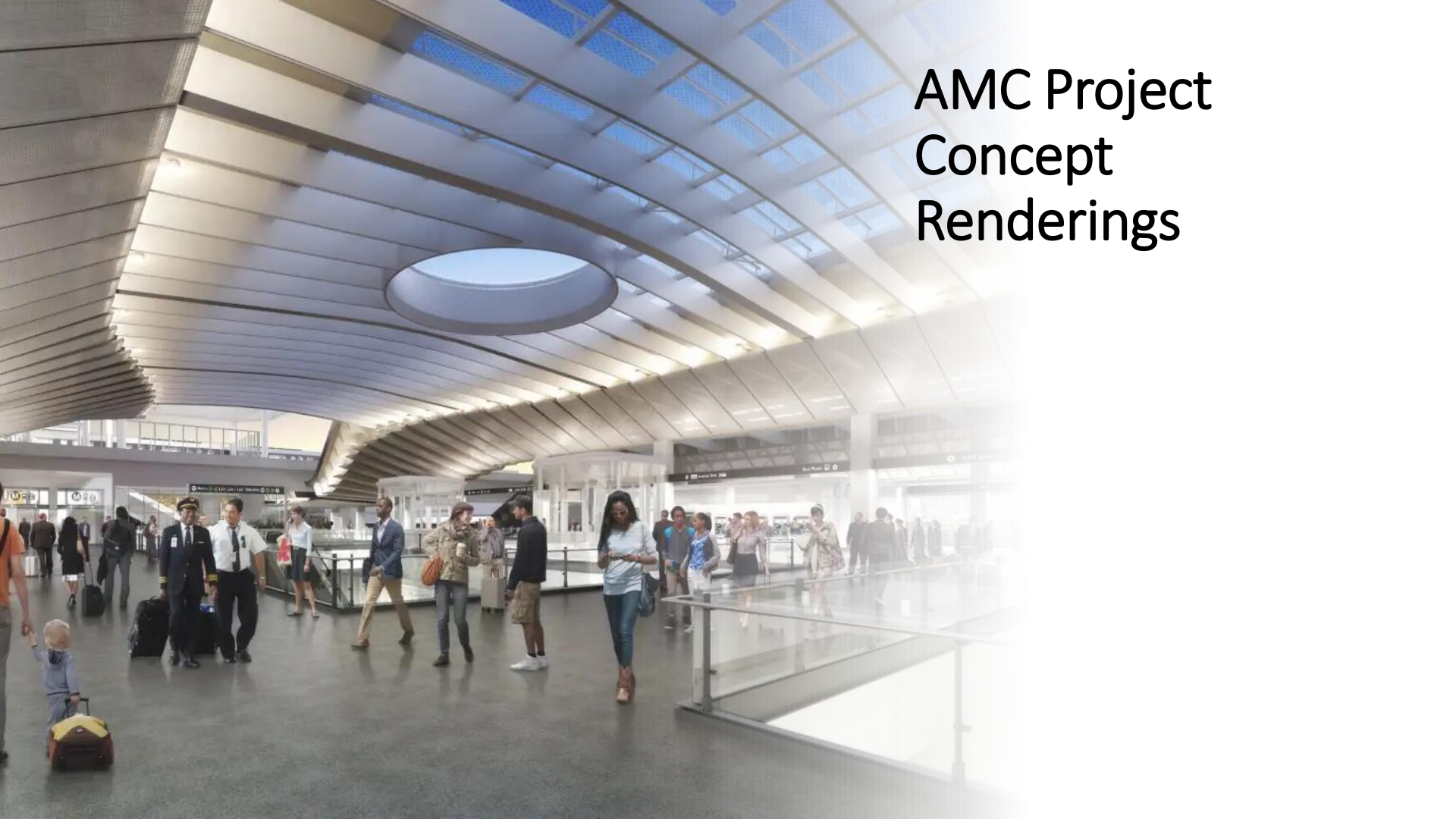
Project Map





AMC Mezzanine Painting and Mesh Panel Supports Installation

AMC Project Concept Renderings





AMC Structural Steel Install Photos



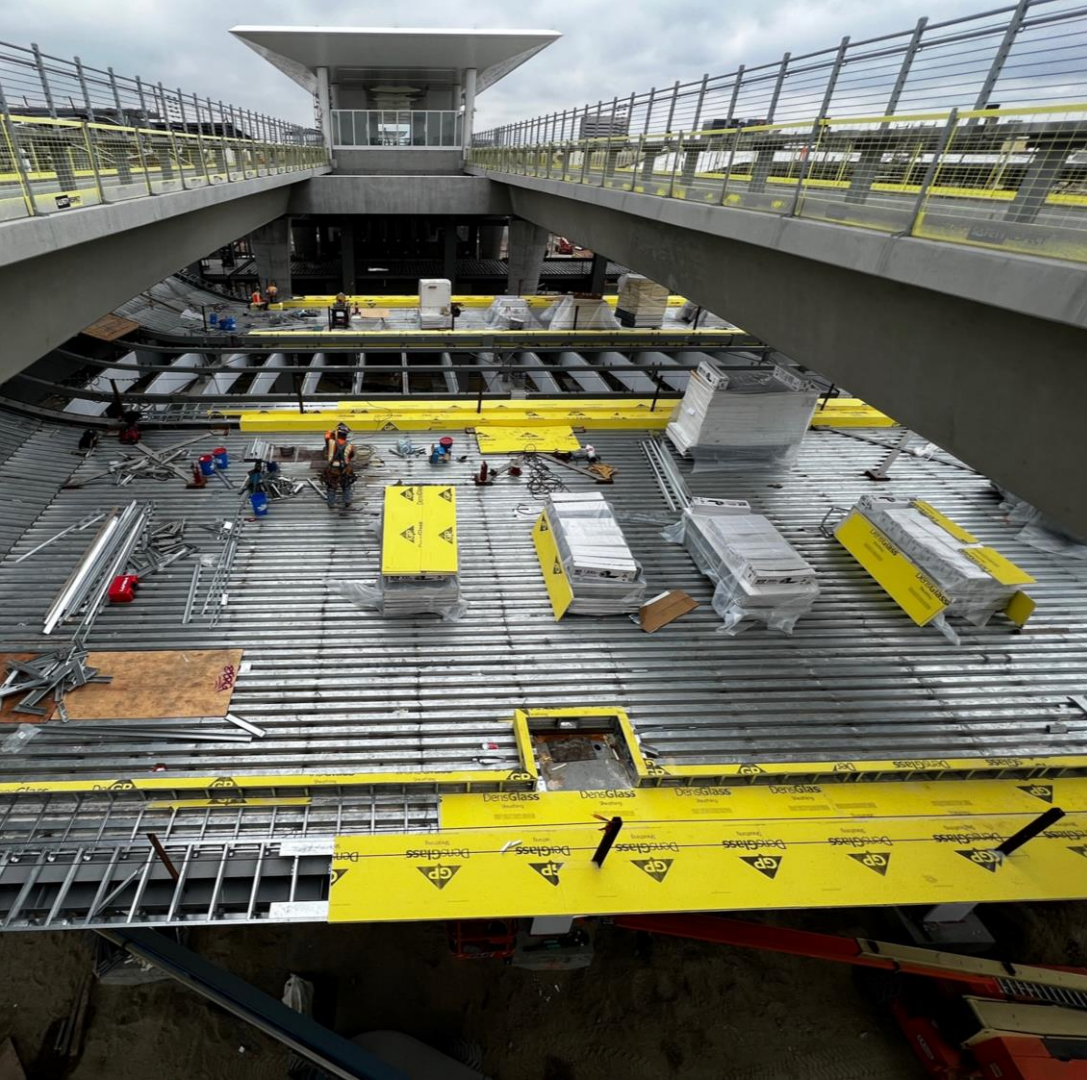
Bike Hub Roof
Structure (From APM
Facing South and East)

Bike Hub Roof Structure (From APM Facing South and East)



Bike Hub Fireproofing





Bike Hub Low Roof



AMC Project Concept Renderings



Utility Work for Metro Hub



Sloping Roof of LRT



Mezzanine of Metro Hub



Mezzanine Connection to APM



Elevator framework installation



East and West
Wings of Metro
Hub Roof

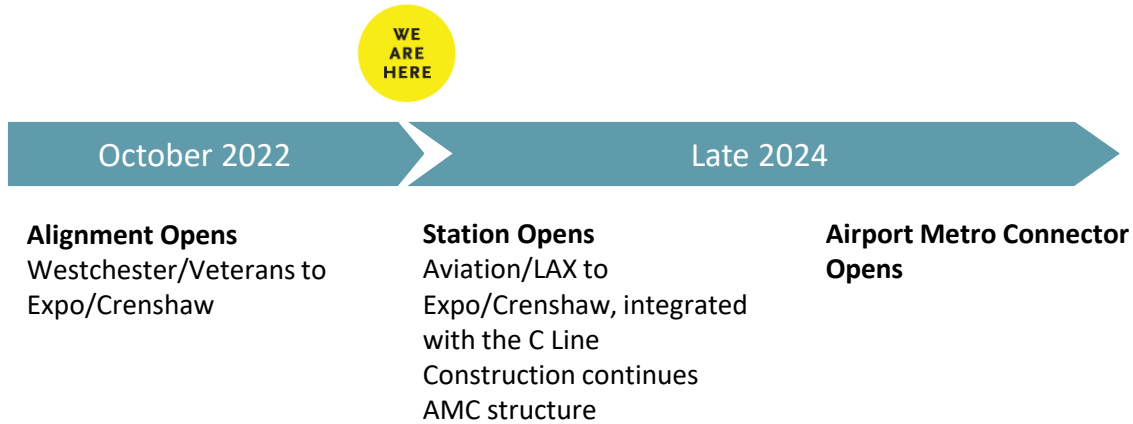


Completed
Track




Aerial View

Project Schedule



ONGOING PUBLIC PARTICIPATION

Stay connected to this project

 213.922.4998

 *laxconnector@metro.net*

 *metro.net/laxconnector*

 *[@metrolosangeles](https://twitter.com/metrolosangeles)*

 *[losangelesmetro](https://www.facebook.com/losangelesmetro)*

State of Good Repair



Metro

State of Good Repair Overview

- > Under the State of Good Repair initiative, Metro employs a variety of projects to keep existing and future transit assets in good working order, while substantially upgrading the overall transit system
- > At times, work performed will require:
 - > Trains traveling on one track
 - > Station closures in which service will be maintained with free bus shuttles to connect other stations and complete trips
- > Wayfinding signs to direct customers to the appropriate platform for boarding or to find the nearest free bus shuttle, are used and posted at affected stations



Metro C Line Overhead Power Replacement Work

C Line Overhead Power Replacement Work

- > C Line overhead power replacement work will help bring service to the Airport Metro Connector
- > This work will continue in phases to minimize disruptions to riders
 - > C Line single tracking between El Segundo and Redondo Beach Station
 - > Eastbound and westbound trains will operate on Track 1
 - > Date: November 28, 2023 through January 30, 2024
- > Dates for all future upgrades will be announced in advance of the work



Stay updated on Metro rail


 323.GO.METRO or 323.466.3876

 *serviceimprovements@metro.net*

 *metro.net/state-of-good-repair*

 *@metroLAalerts*

Stay connected to this project

 213.922.4998

 *laxconnector@metro.net*

 *metro.net/laxconnector*

 *[@metrolosangeles](https://twitter.com/metrolosangeles)*

 *[losangelesmetro](https://www.facebook.com/losangelesmetro)*





THANK YOU