

# Welcome!

LAX / Metro Transit Center Station  
Construction Update Meeting

December 18, 2024





# Construction Update Meeting

## LAX / METRO TRANSIT CENTER STATION PROJECT

# Housekeeping

**Today's meeting is being recorded.  
The recording and PDF will be posted on metro.net.**



Attendee cameras are off and microphones are muted.



During the meeting, questions can be submitted using the Q&A icon.

# Code of Conduct

**Metro is committed to ensuring that all participants can fairly and clearly share ideas, comments and concerns about this project. To provide a safe and equitable process, we are asking for your help.**

**During this meeting, please:**

- > Respect the format of the meeting and allow everyone an opportunity to comment



# My Metro Budget Activity



Metro is excited to announce the annual launch of the My Metro Budget activity.

Answer questions about the future and balance funds between safety, cleanliness, service and more! Your contributions will help develop Metro's Fiscal Year 2026 budget.

Plus, when you provide your contact information, you'll be automatically entered for a chance to win a \$100 TAP card or \$50 gift card!

Build your budget and the future of LA County's transit system at [mybudget.metro.net/online](https://mybudget.metro.net/online).



# South Bay Project Updates

Subscribe to Metro's South Bay Area Project Updates by scanning the QR code or signing up at <https://bit.ly/4eV8TVx>



A bright yellow speech bubble with rounded corners and a tail pointing towards the bottom right. The words "THANK YOU" are cut out of the bubble in a bold, blue, sans-serif font. The bubble is set against a solid blue background.

**THANK YOU**

# Project Team

## **Program Management**

Rafie Zamani

Chris Sheaffer

## **Construction Relations**

Brett Roberts

## **Art & Design**

Zapporah Yamamoto

## **C and K Line Operations Change**

Joe Forgiarini

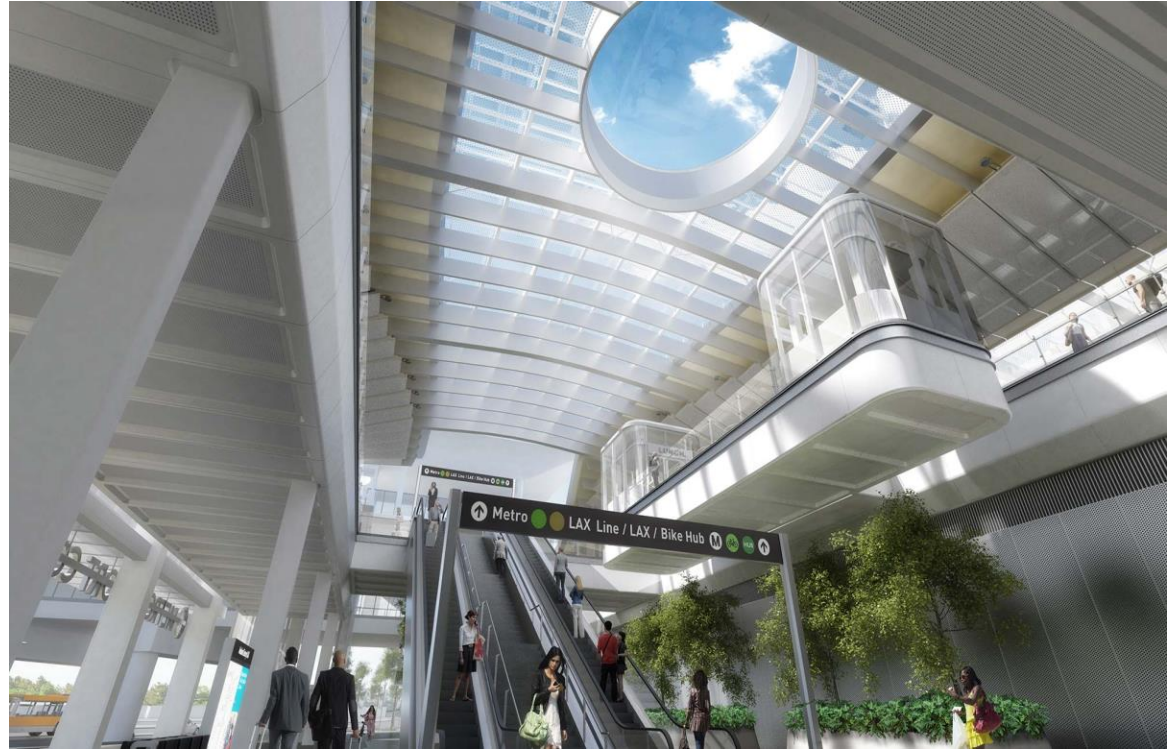
## **Active Transport Programs: First/Last Mile**

Hannah Brunelle



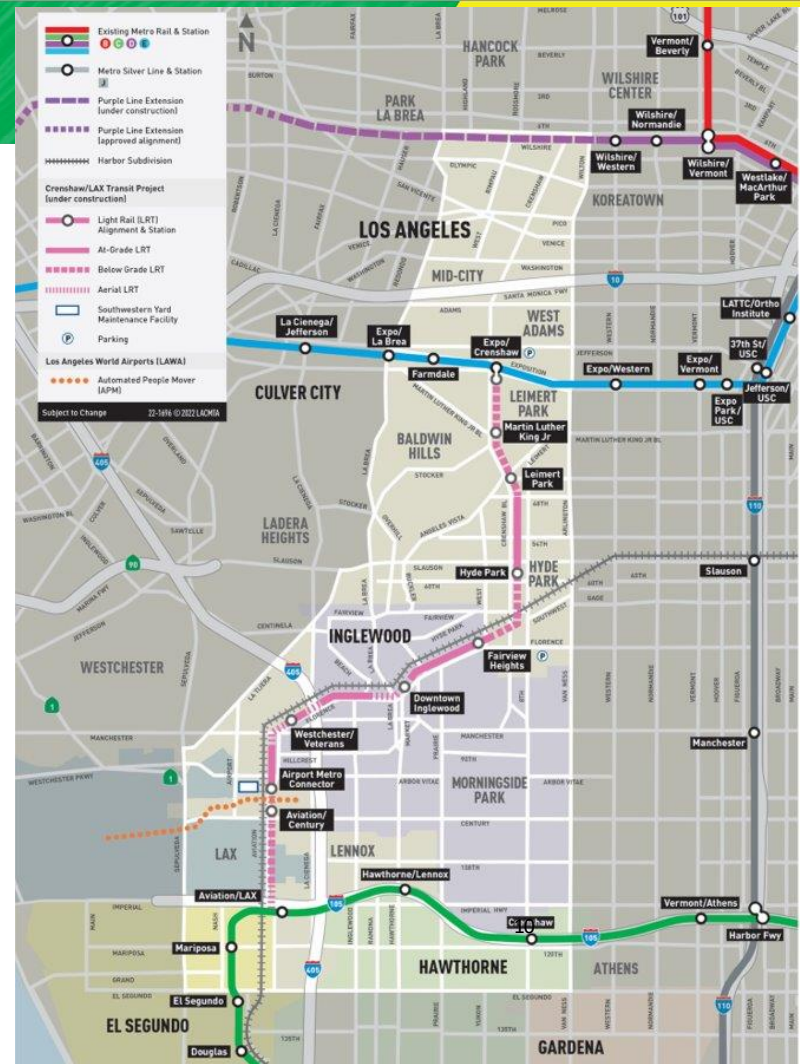
# Agenda

- > Introduction
- > Project Background  
Current Status
- > C & K Line Routes
- > Metro Active Transport  
Programs: First Mile/Last Mile  
Initiatives
- > Questions



# Project Overview

- > The Metro K Line Project is a new 8.5-mile, eight station light rail line linking Metro C Line to the E Line
- > On October 7, 2022 the Metro K Line began operating between Expo/Crenshaw and Westchester/Veterans stations
- > A free bus shuttle connects the Westchester/Veterans and Aviation/LAX stations



# Project Overview

- > K Line connection to the C Line is anticipated in early 2025
- > LAX/Metro Transit Center Station, formerly known as Airport Metro Connector (AMC), opened in late 2024
- > In June 2022, the Metro Board approved the station name, LAX/Metro Transit Center Station, connecting Los Angeles International Airport (LAX) with AMC
- > Located at 96th St and Aviation Bl
- > Project budget of \$898M

## The station features

- > Light rail connections
- > Bus plaza and connections to regional carriers
- > Bike hub
- > Customer service center
- > Commercial space
- > Future direct connection to the LAX Automated People Mover (APM)



# Project Map



# LAX/Metro Transit Center Station - Located at 96th St and Aviation Bl



# LAX/Metro Transit Center Station



# LAX/Metro Transit Center Station - Mezzanine



- > The Mezzanine will provide convenient access to the bus plaza, rail lines, bike hub and much more

Concept Rendering

# Metro Art

- The Metro Art Policy allocates 0.5% of transit construction costs for public art for the project
- Artists are selected through an open, competitive selection process
- The station includes a monumental suspended sculptural artwork
- For more information about Metro Art visit [metro.net/art](https://metro.net/art)



Glenn Kaino, artist. *The Distance of the Sun*. (rendering)

# LAX/Metro Transit Center Station - Bike Hub



Concept Rendering



# LAX/Metro Transit Center - Looking West From Arbor Vitae St



Construction of the station is advancing. Installed glass panels.

# LAX/Metro Transit Center - View From Platform Level



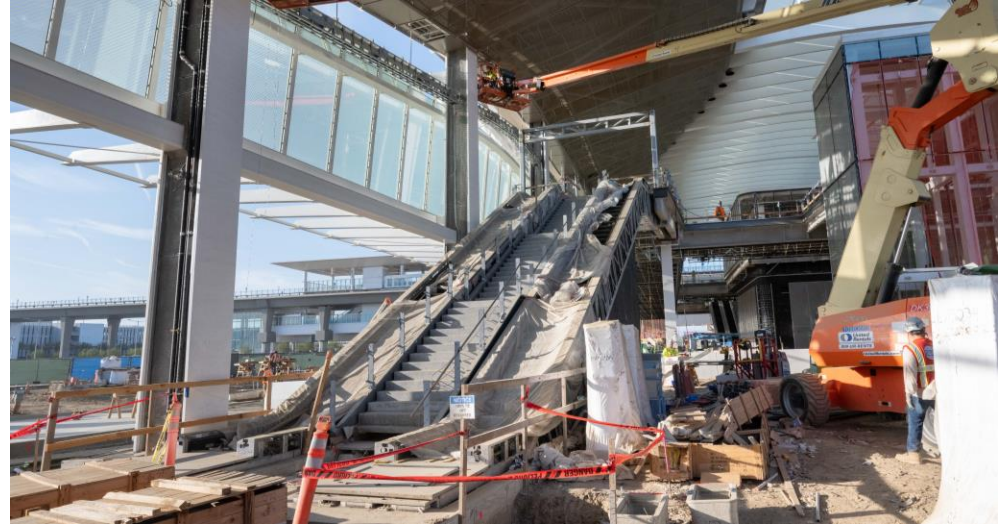
Closer view of the station with view of the escalator to the mezzanine.



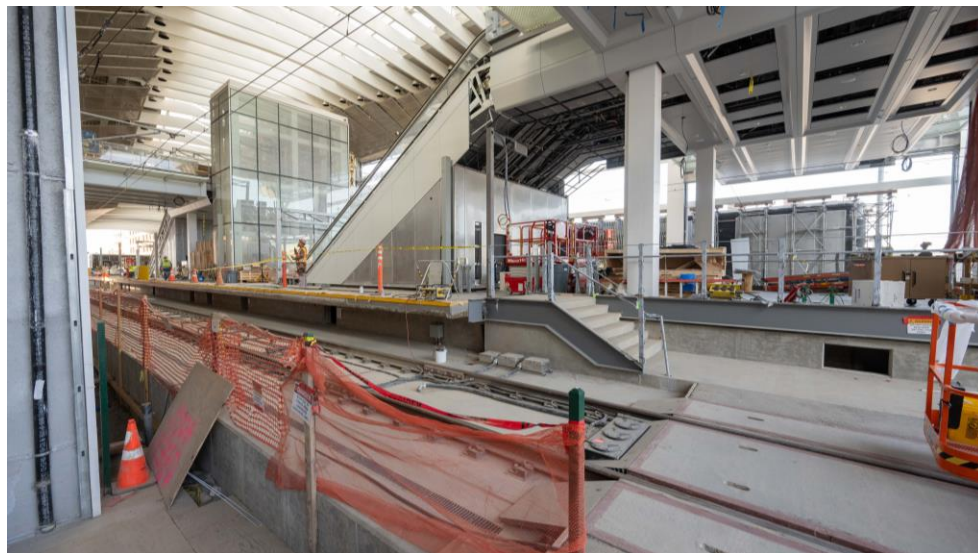
# Retail & Ticketing Kiosk on Bus Plaza



# Elevators & Escalators Will Provide Convenient Station Access



# Bus & Rail Services Will Be Available At the Station



# Dedicated Bus Operations Building At The Station



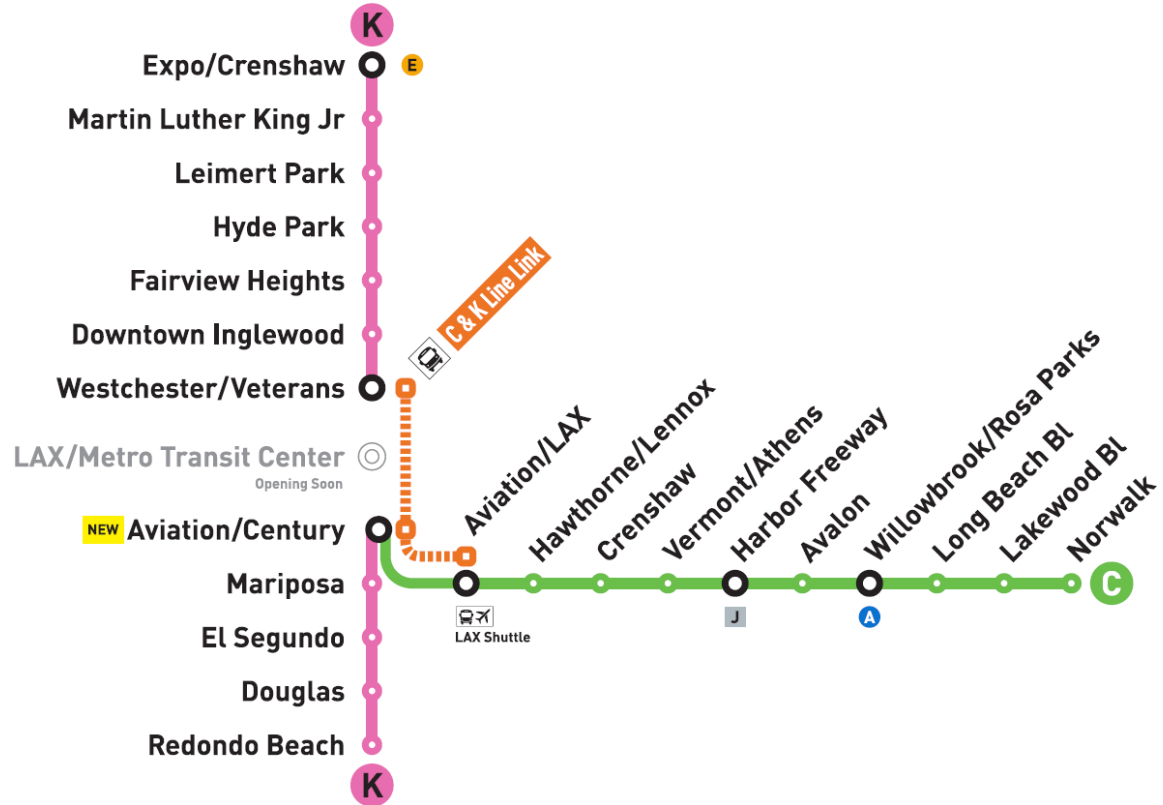
# Project Schedule



# Metro C and K Line Service Change

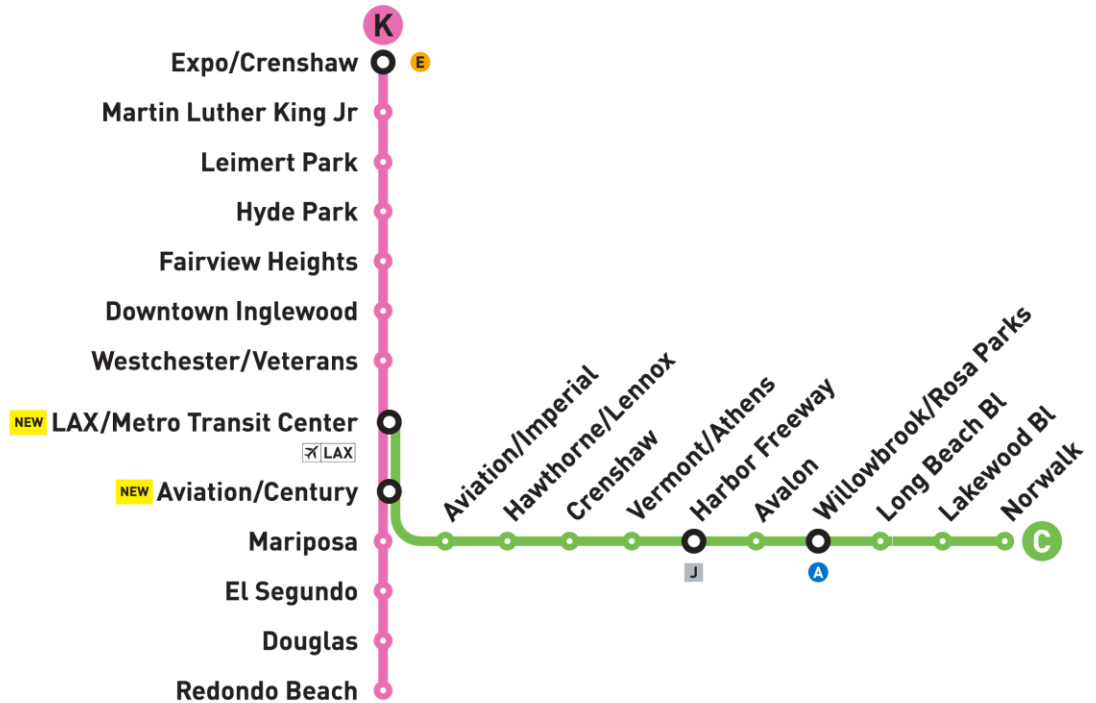
# Service Change: K & C Line Integration & Aviation/Century Station Opening

- > In preparation for the opening of LAX/Metro Transit Center Station, trains testing will start this Fall
- > The Aviation/Century Station will also open soon
- > K & C line trains will serve new stations as part of the service change



# Proposed Operational Plan: K & C Line and LAX/Metro Transit Center Opening

- > The LAX/Metro Transit Center Station will open soon
- > K & C line trains will serve new stations as part of the service change



# Metro Active Transport Programs

# MAT Project: Aviation/LAX Station First/Last Mile

- > Measure M established the **Metro Active Transport (MAT) Program**, which funds FLM improvements to expand the reach of transit
- > Collaborative project with the City of LA, County of LA, City of El Segundo, and community-based organization partners
- > **Funding ~3.3M awarded to City of LA** through MAT for implementation of FLM improvements. The agencies of El Segundo and Los Angeles County will separately pursue implementation funding for this effort
- > Through community engagement, the team identified improvements and is working to prioritize projects for implementation

**MAT Project Area:**  
*½-mile radius of station*



# Project Schedule

WE  
ARE  
HERE

## Summer 2024

- > Complete existing conditions
- > Community meeting #1
- > Identify and draft project list
- > Pop-up engagement events (3)

## Fall 2024

- > Draft 5% conceptual plans
- > Community event #2 – Saturday, 10/26
- > Draft 15% conceptual plans

## Fall/Winter 2024

- > Interagency review
- > Interagency response to comments
- > Finalize 15% conceptual plans

## Winter/Spring 2025

- > **Community culmination event**
- February/March**
- > **Coordinate design handoff to City of LA**
- > **Final 15% project list and plans**

# Example Proposed Projects

## Imperial Highway

Within City of LA

### CORRIDOR-WIDE IMPROVEMENTS



#### Along the Corridor:

- Implement targeted traffic calming to slow turning vehicles at intersections.
- Convert existing bike lanes to Class IV protected bikeway.
- Install pedestrian lighting (Suggested max staggered spacing is 70' for major and collector streets).
- Fill sidewalk gaps and replace substandard sections.
- Provide landscaping in the median.



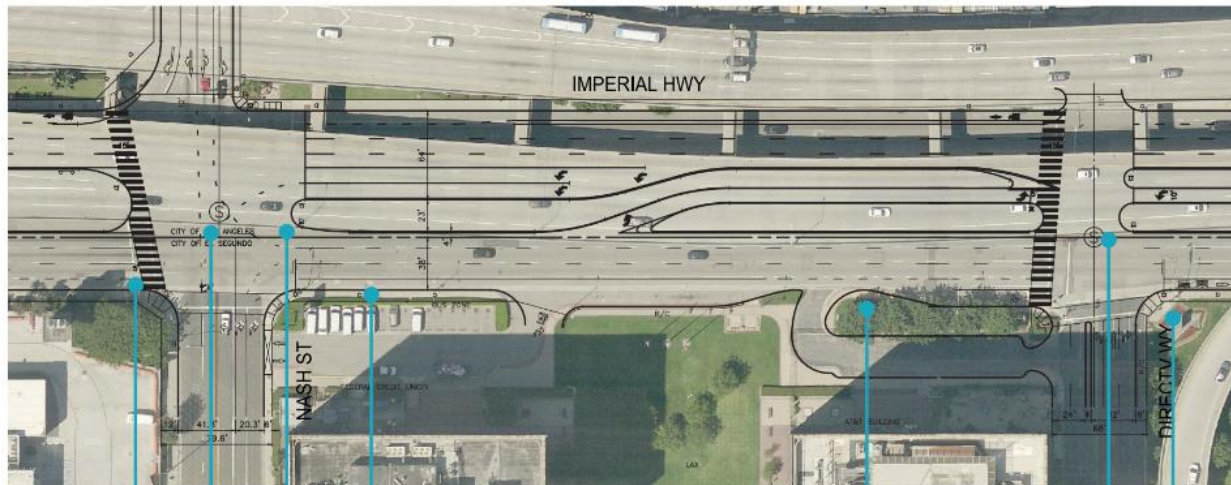
#### At all signalized intersections:

Add more time for people to cross, install left-turn arrows at traffic lights to allow drivers to turn safely, and high-visibility crosswalks.



#### At all bus stops:

Remove obstacles to bus stops and enhance amenities (include seating, trash bins, signage, and shade).




Missing crosswalk



Missing crosswalk

# Stay connected to this project

 213.922.4998

 *[laxconnector@metro.net](mailto:laxconnector@metro.net)*

 *[metro.net/laxconnector](https://metro.net/laxconnector)*

A yellow speech bubble with rounded corners and a tail pointing towards the bottom right. The words "THANK YOU" are cut out of the bubble in a bold, blue, sans-serif font. The background is a solid, textured blue color.

**THANK YOU**