



REV	DATE	BY	APP	REG NO	EXPIRES	SEAL HOLDER	DESCRIPTION

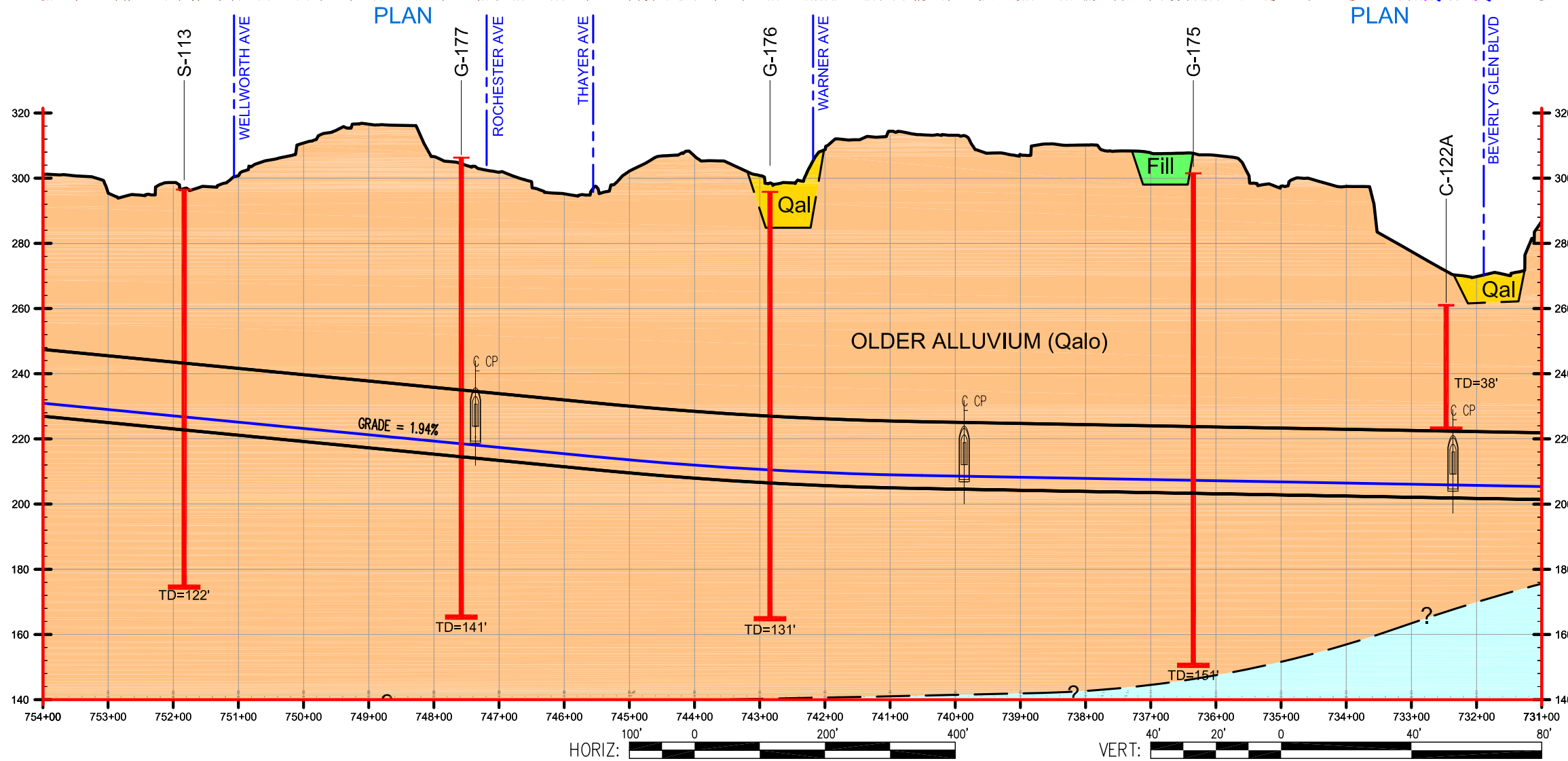
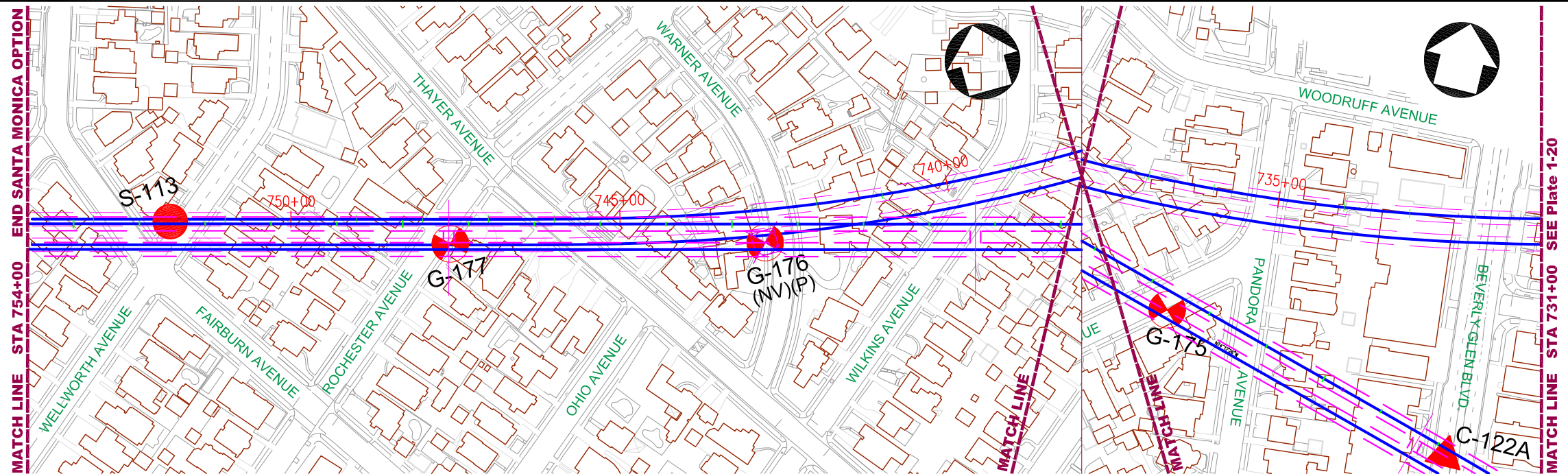
DESIGNED BY
ELLIOTT / MUNRO
 DRAWN BY
L. MORLEY
 CHECKED BY
JAG / HP
 IN CHARGE
MBH / PM
 DATE
12/02/2011


Metro
 LOS ANGELES COUNTY
 METROPOLITAN TRANSPORTATION AUTHORITY

 PROJECT MANAGER _____

**WESTSIDE SUBWAY EXTENSION
 PRELIMINARY ENGINEERING
 BORING PLAN AND GEOLOGIC PROFILE**
 STATION 710+00 TO 741+00
 SANTA MONICA BOULEVARD OPTION



CONTRACT NO	
DRAWING NO	Plate 1-20
SCALE	AS NOTED
SHEET NO	

FILE NAME: C:\Users\LAMorley\Documents\CAD\4953-11-1421_WSE\4953-11-1421_P&P-Plates\11.11.dwg [20]
 DATE: December 07, 2011
 TIME: 2:38 PM



REV	DATE	BY	APP	REG NO	EXPIRES	SEAL HOLDER	DESCRIPTION

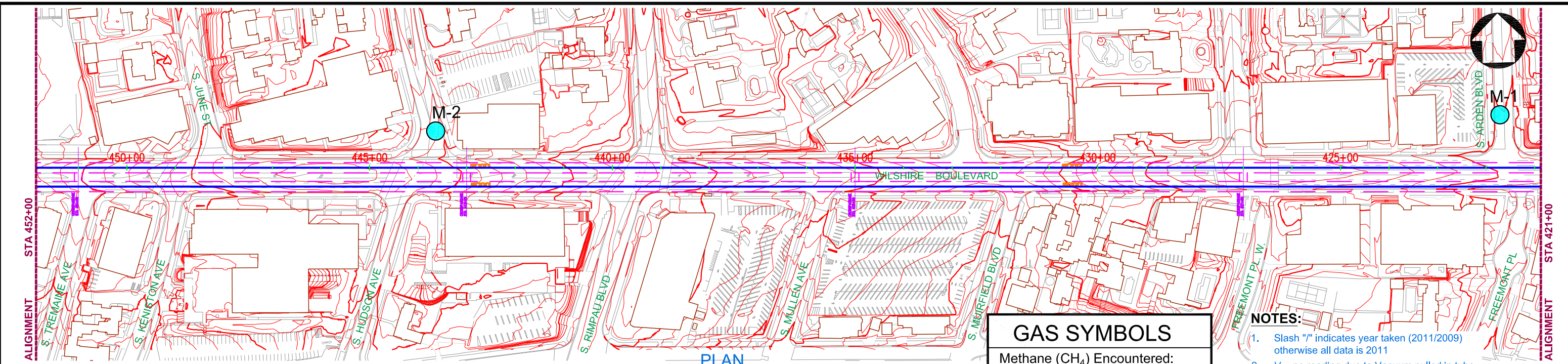
DESIGNED BY ELLIOTT / MUNRO
 DRAWN BY L. MORLEY
 CHECKED BY JAG / HP
 IN CHARGE MBH / PM
 DATE 12/02/2011


Metro
 LOS ANGELES COUNTY METROPOLITAN TRANSPORTATION AUTHORITY

 PROJECT MANAGER _____

WESTSIDE SUBWAY EXTENSION
PRELIMINARY ENGINEERING
BORING PLAN AND GEOLOGIC PROFILE
 STATION 731+00 TO 754+00
 SANTA MONICA BOULEVARD OPTION

CONTRACT NO	
DRAWING NO	Plate 1-21
SCALE	AS NOTED
SHEET NO	

FILE NAME: C:\Users\LAMorley\Documents\CAD\4953-11-1421_VSE\4953-11-1421_P&P-Plates\11.11.dwg [21] DATE: December 07, 2011 TIME: 2:42 PM



GAS SYMBOLS

Methane (CH₄) Encountered:

- 4 < 5% by Volume
- 25 5 - 25% by Volume
- 100 26 - 100% by Volume

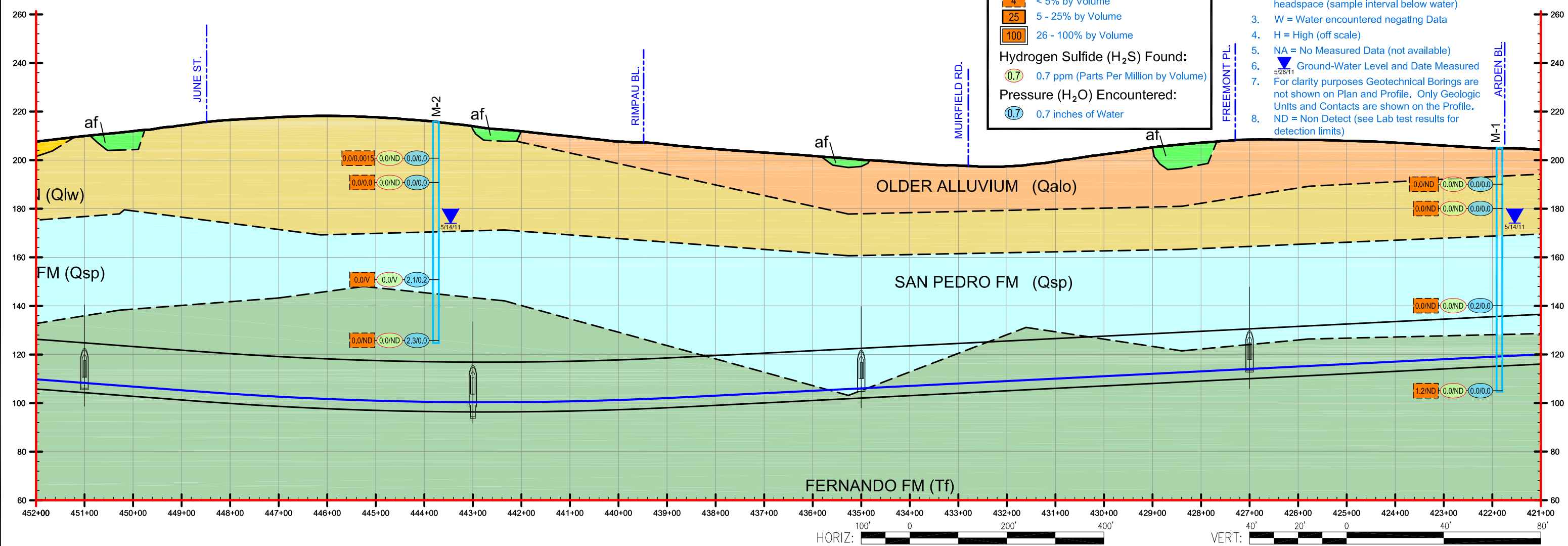
Hydrogen Sulfide (H₂S) Found:

- 0.7 0.7 ppm (Parts Per Million by Volume)

Pressure (H₂O) Encountered:

- 0.7 0.7 inches of Water

- NOTES:**
1. Slash "/" indicates year taken (2011/2009) otherwise all data is 2011
 2. V = no reading due to Vacuum pulled in tube headspace (sample interval below water)
 3. W = Water encountered negating Data
 4. H = High (off scale)
 5. NA = No Measured Data (not available)
 6. ▼ Ground-Water Level and Date Measured
 7. For clarity purposes Geotechnical Borings are not shown on Plan and Profile. Only Geologic Units and Contacts are shown on the Profile.
 8. ND = Non Detect (see Lab test results for detection limits)



REV	DATE	BY	APP	REG NO	EXPIRES	SEAL HOLDER	DESCRIPTION

DESIGNED BY
ELLIOTT / MUNRO

DRAWN BY
L. MORLEY

CHECKED BY
JAG / HP

IN CHARGE
MBH / PM

DATE
12/02/2011

Metro

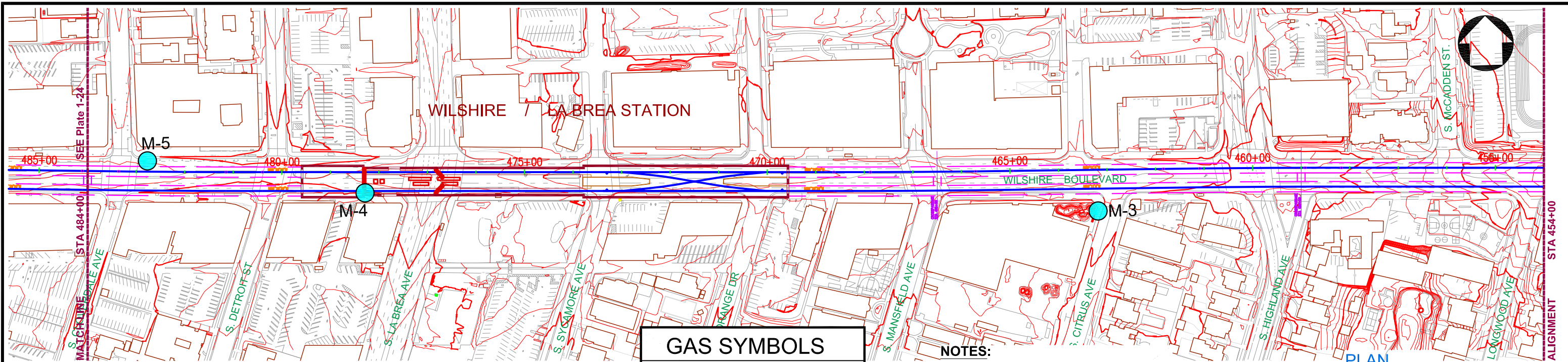
LOS ANGELES COUNTY
METROPOLITAN TRANSPORTATION AUTHORITY

**WESTSIDE SUBWAY EXTENSION
PRELIMINARY ENGINEERING
SUBSURFACE GAS DATA**

STATION 421+00 to 452+00

CONTRACT NO	
DRAWING NO	REV
Plate 1-22	
SCALE	AS NOTED
SHEET NO	

FILE NAME: G:\9693_Geotech\2011111421_MetroWestside\CA\04653-1\1421_Gas-Data.dwg [2] DATE: December 04, 2011 TIME: 2:52 PM



GAS SYMBOLS

Methane (CH₄) Encountered:

- 4 < 5% by Volume
- 25 5 - 25% by Volume
- 100 26 - 100% by Volume

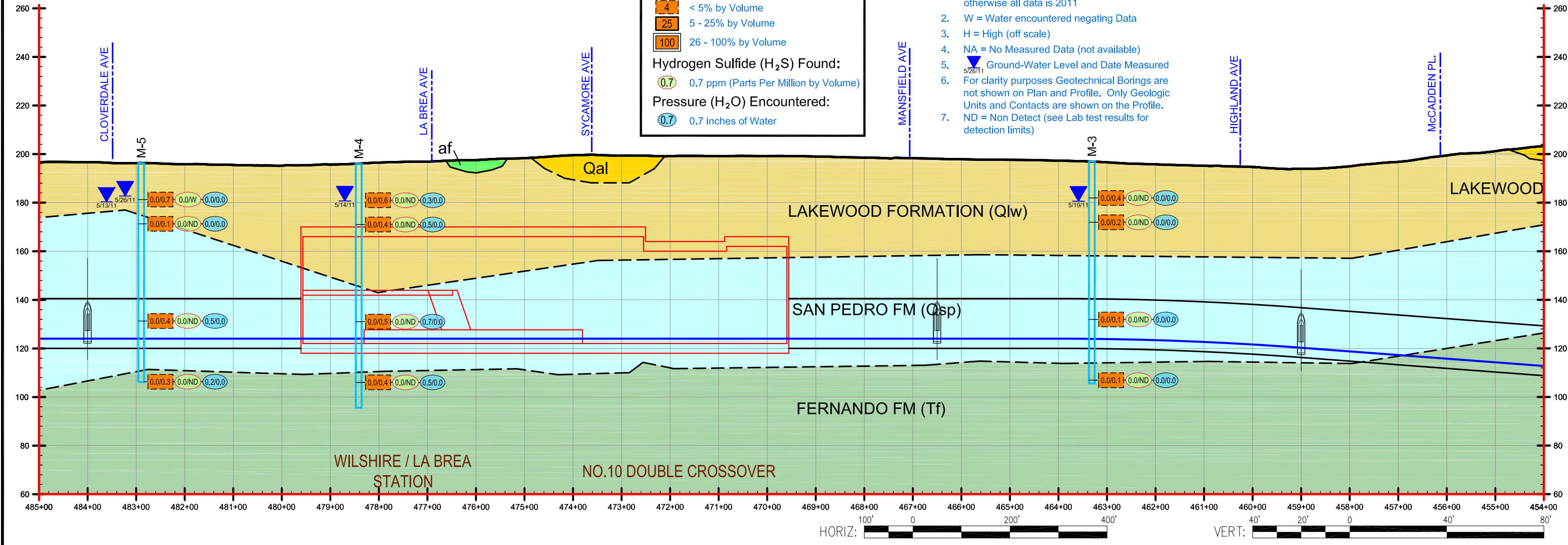
Hydrogen Sulfide (H₂S) Found:

- 0.7 0.7 ppm (Parts Per Million by Volume)

Pressure (H₂O) Encountered:

- 0.7 0.7 inches of Water

- NOTES:**
1. Slash "/" indicates year taken (2011/2009) otherwise all data is 2011
 2. W = Water encountered negating Data
 3. H = High (off scale)
 4. NA = No Measured Data (not available)
 5. ▼ Ground-Water Level and Date Measured
 6. For clarity purposes Geotechnical Borings are not shown on Plan and Profile. Only Geologic Units and Contacts are shown on the Profile.
 7. ND = Non Detect (see Lab test results for detection limits)



REV	DATE	BY	APP	REG NO	EXPIRES	SEAL HOLDER	DESCRIPTION

DESIGNED BY
ELLIOTT / MUNRO

DRAWN BY
L. MORLEY

CHECKED BY
JAG / HP

IN CHARGE
MBH / PM

DATE
12/02/2011

LOS ANGELES COUNTY
METROPOLITAN TRANSPORTATION AUTHORITY

Metro

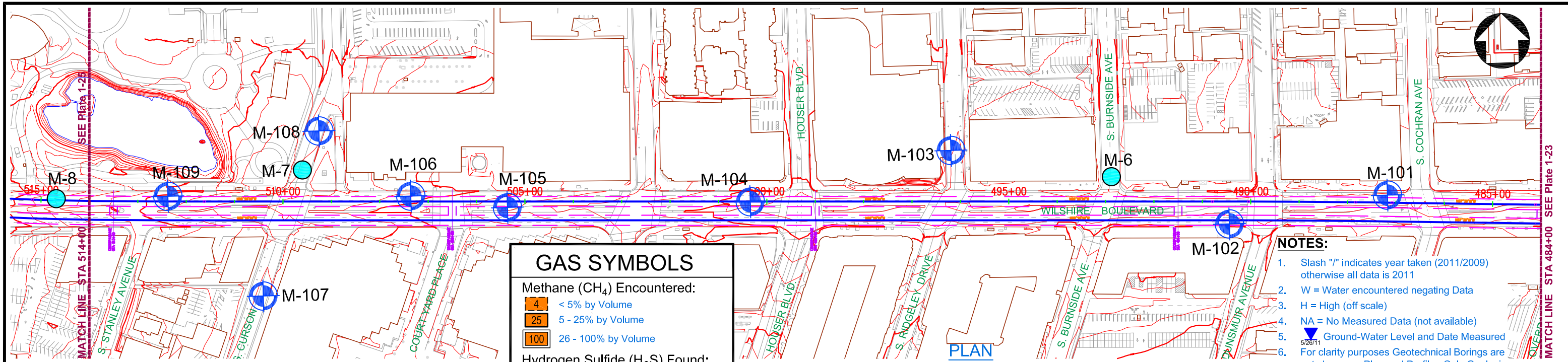
PROJECT MANAGER _____

**WESTSIDE SUBWAY EXTENSION
PRELIMINARY ENGINEERING
SUBSURFACE GAS DATA**

STATION 454+00 to 485+00

CONTRACT NO	
DRAWING NO	Plate 1-23
SCALE	AS NOTED
SHEET NO	

FILE NAME: G:\4953_Geotech\2011111421_MetroWestside\CA04953-1\1421_Gas-Data.dwg [2] DATE: December 04, 2011 TIME: 2:51 PM



GAS SYMBOLS

Methane (CH₄) Encountered:

- 4 < 5% by Volume
- 25 5 - 25% by Volume
- 100 26 - 100% by Volume

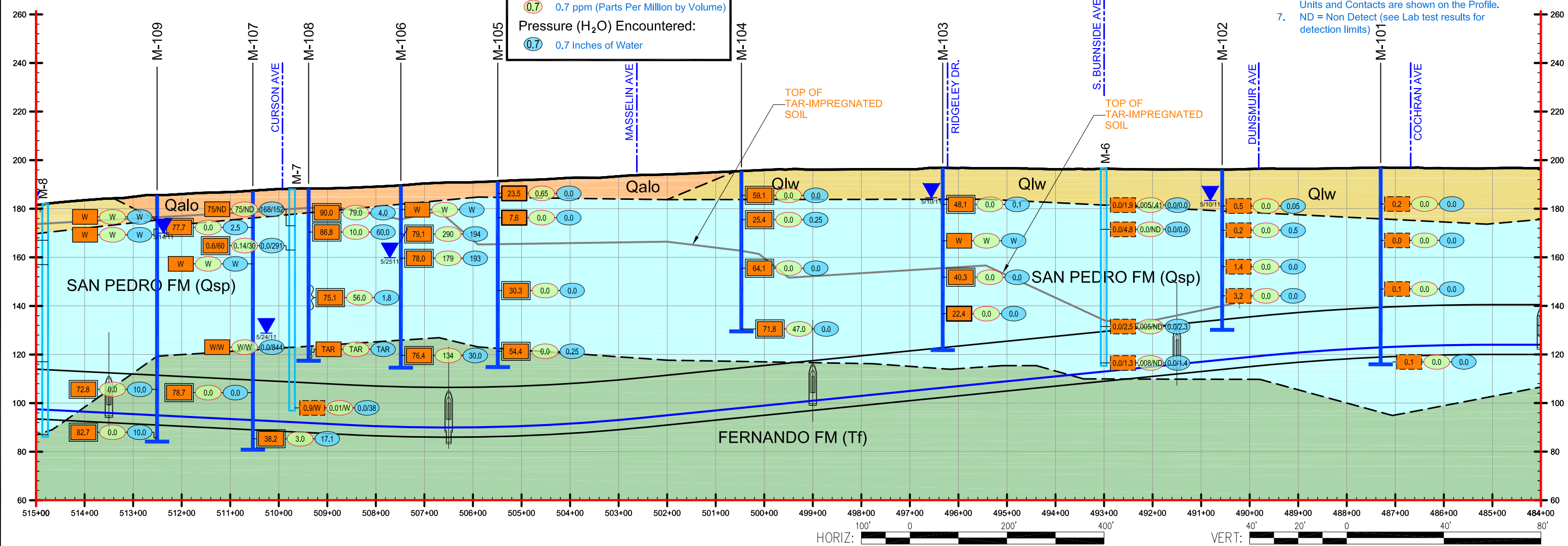
Hydrogen Sulfide (H₂S) Found:

- 0.7 0.7 ppm (Parts Per Million by Volume)

Pressure (H₂O) Encountered:

- 0.7 0.7 inches of Water

- NOTES:**
1. Slash "/" indicates year taken (2011/2009) otherwise all data is 2011
 2. W = Water encountered negating Data
 3. H = High (off scale)
 4. NA = No Measured Data (not available)
 5. ▼ Ground-Water Level and Date Measured
 6. For clarity purposes Geotechnical Borings are not shown on Plan and Profile. Only Geologic Units and Contacts are shown on the Profile.
 7. ND = Non Detect (see Lab test results for detection limits)



REV	DATE	BY	APP	REG NO	EXPIRES	SEAL HOLDER	DESCRIPTION

DESIGNED BY
ELLIOTT / MUNRO

DRAWN BY
L. MORLEY

CHECKED BY
JAG / HP

IN CHARGE
MBH / PM

DATE
12/02/2011

**LOS ANGELES COUNTY
METROPOLITAN TRANSPORTATION AUTHORITY**

Metro

PROJECT MANAGER _____

**WESTSIDE SUBWAY EXTENSION
PRELIMINARY ENGINEERING
SUBSURFACE GAS DATA**

STATION 484+00 to 515+00

CONTRACT NO	
DRAWING NO	REV
Plate 1-24	
SCALE	AS NOTED
SHEET NO	

FILE NAME: G:\9693_Geotech\2011111421_MetroWestside\CAD\4852-1\1421_Gas-Data.dwg [24] DATE: December 04, 2011 TIME: 4:02 PM