

Welcome!

We will begin in a few moments.

Construction Update Meeting

June 22, 2023



Metro



Construction Update Meeting

AIRPORT METRO CONNECTOR CONSTRUCTION PROJECT





Housekeeping

Today's meeting is being recorded.



Attendee cameras are off and microphones are muted.



During the meeting, questions can be submitted using the Q&A icon.



For technical support, call or text 213.276.6008

Code of Conduct

Metro is committed to ensuring that all participants can fairly and clearly share ideas, comments and concerns about this project. To provide a safe and equitable process, we are asking for your help.

During this meeting, please:

- > **Respect the format of the meeting and allow everyone an opportunity to comment**
- > **Turn off cell phones and background noise when speaking**
- > **Treat fellow community members, agency representatives, Metro staff and others with respect**
- > **Address all comments to Metro staff and consultants – not to other attendees**
- > **Maintain a conversational tone**



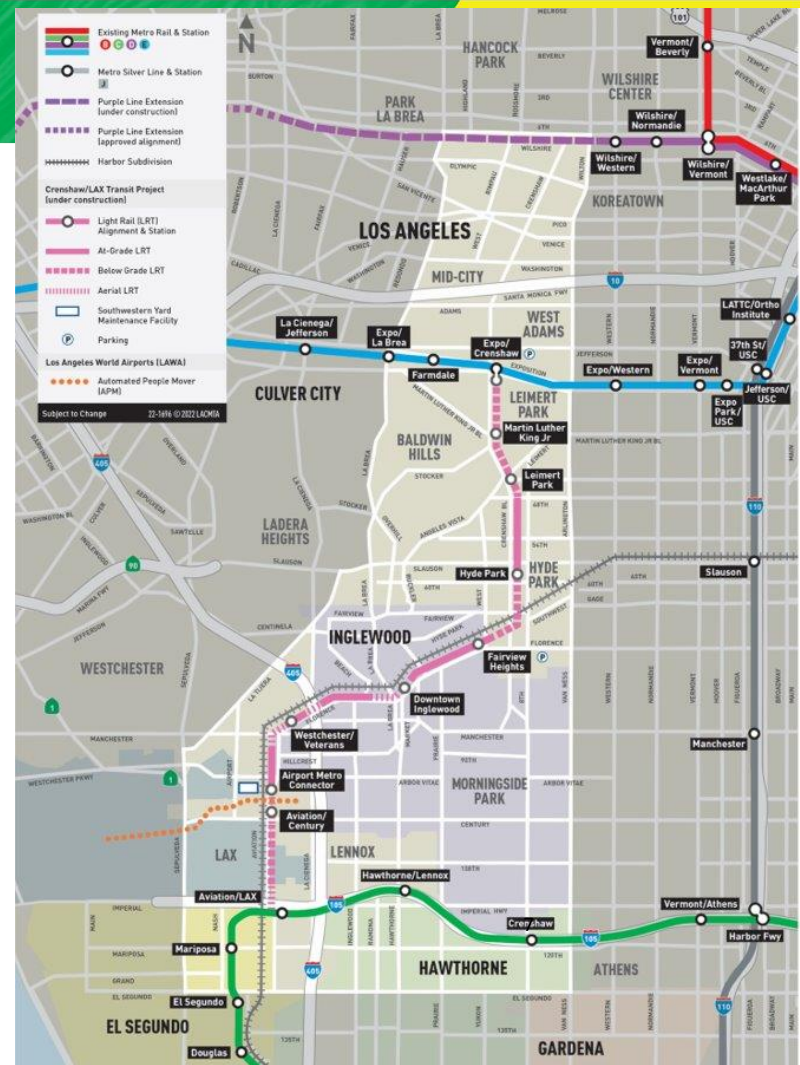
Agenda

- > Introduction
- > Project Background
- > Current Status
- > Crenshaw/LAX
Operational Plan
Update
- > Questions



Project Overview

- > The Metro K Line Project is a new 8.5-mile, eight station light rail line linking Metro's C Line to the E Line
- > On October 7, 2022 the Metro K Line began operating between Expo/Crenshaw and Westchester/Veterans stations
- > A free bus shuttle connects the Westchester/Veterans and Aviation/LAX stations



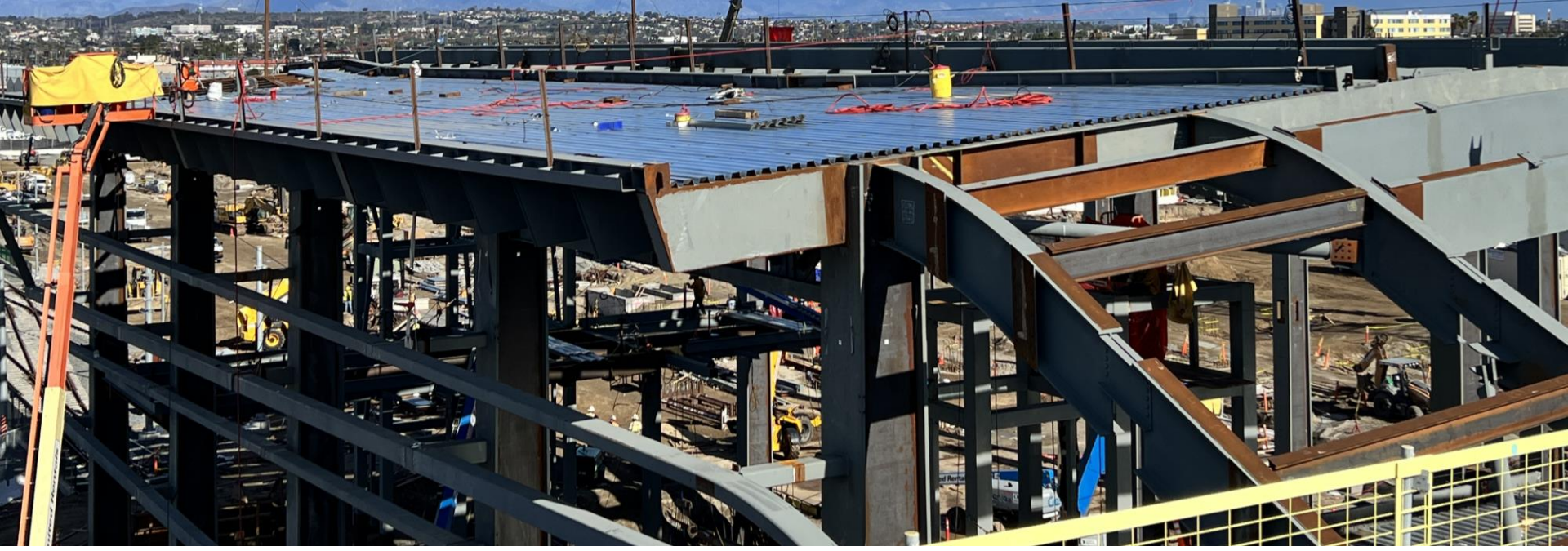
Project Overview

- > **Metro K Line connection to the Metro C Line anticipated in late 2024**
- > **Airport Metro Connector (AMC) is now under construction, with an anticipated late 2024 opening**
- > **Located at 96th St and Aviation Bl**
- > **Project budget of \$898M**
- > **Will feature**
 - > **Bike Hub**
 - > **Customer service center**
 - > **Connections to regional carriers**
 - > **Commercial space and more.**



Project Map





AMC Structural Steel Install Photos



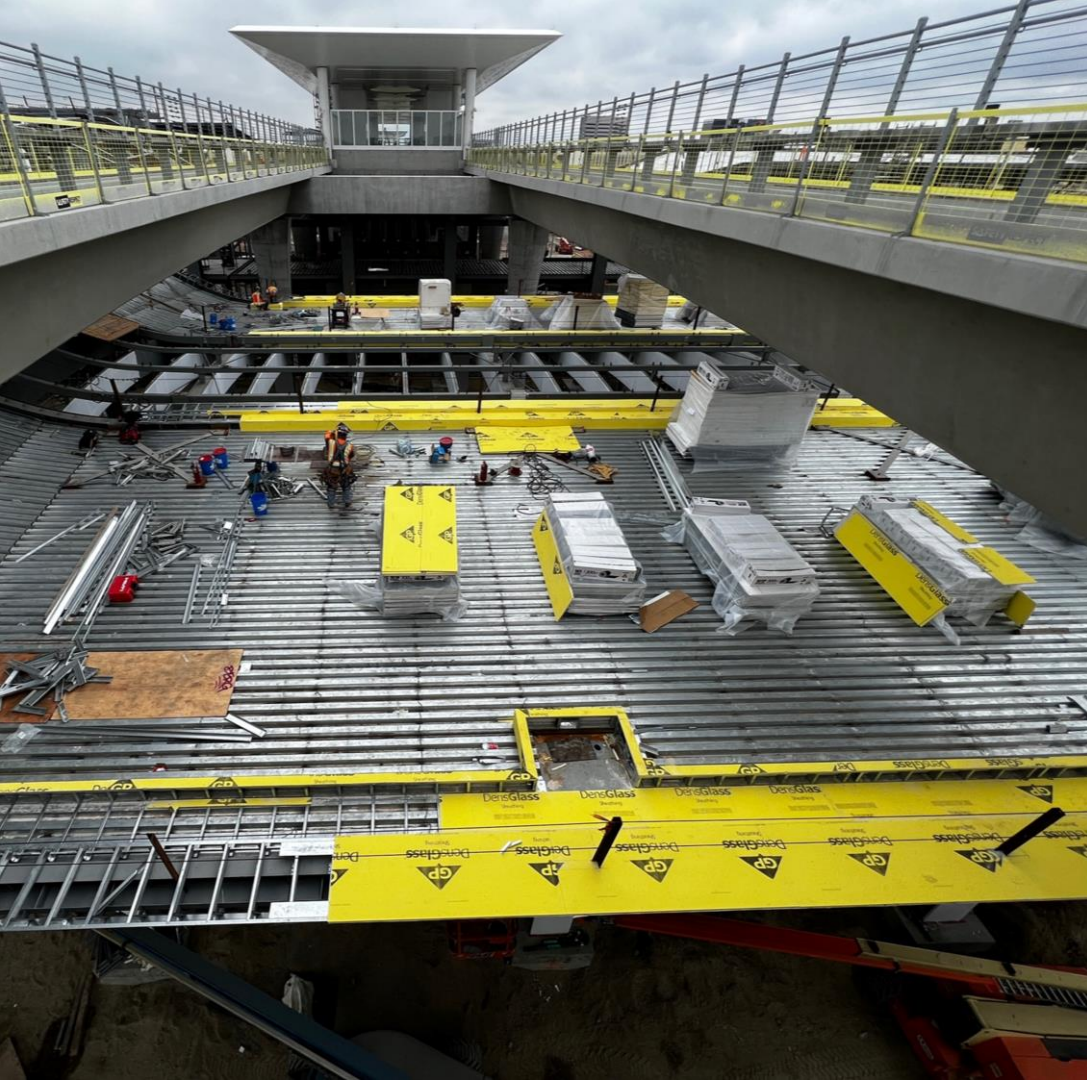
AMC Structural Steel Install Photos



Bike Hub Roof
Structure (From APM
Facing South and East)

Bike Hub Roof Structure (From APM Facing South and East)





Bike Hub Low Roof



Utility Work for Metro Hub



Sloping Roof of LRT



Mezzanine of Metro Hub

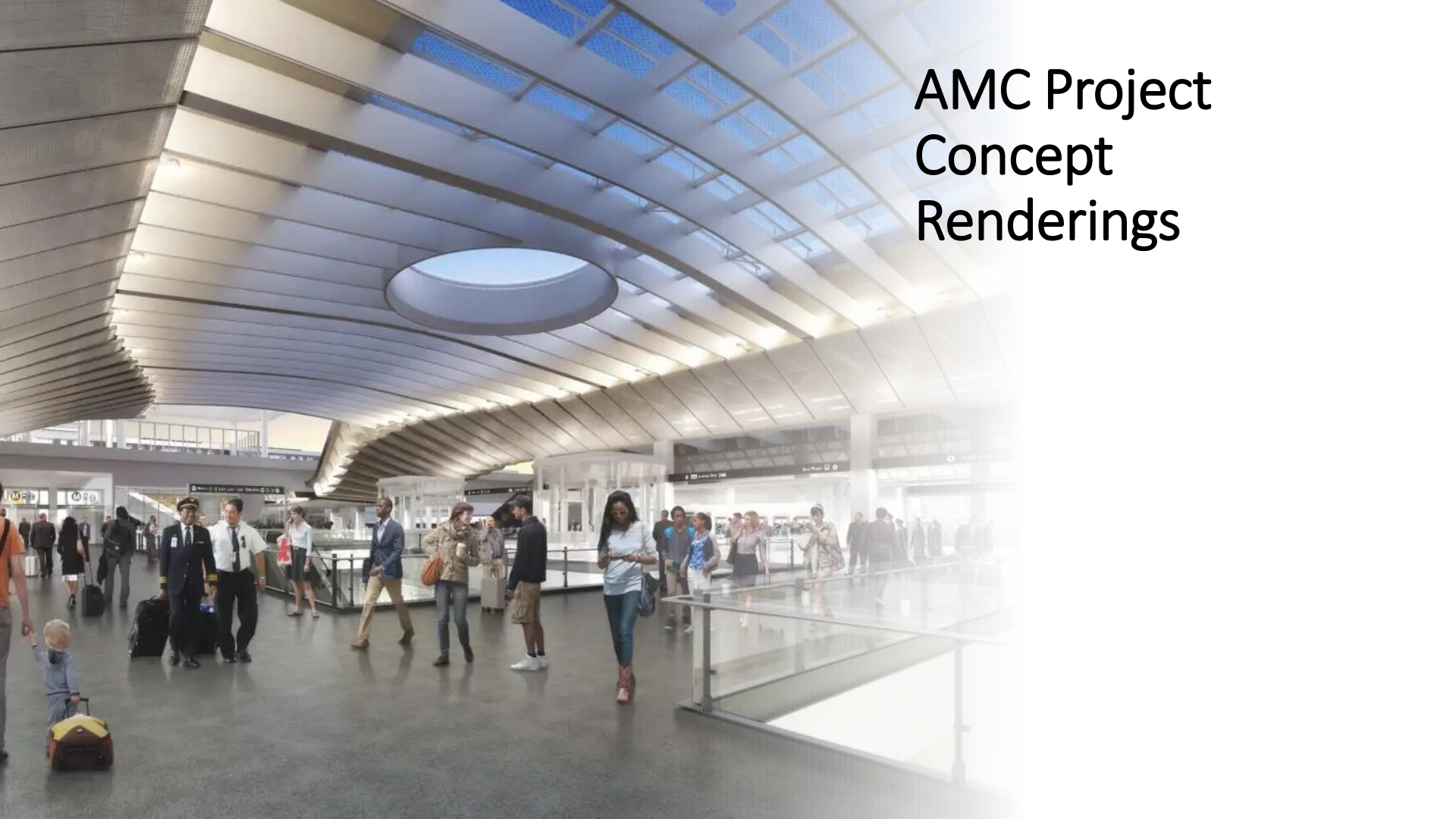


Mezzanine Connection to APM



East and West
Wings of Metro
Hub Roof

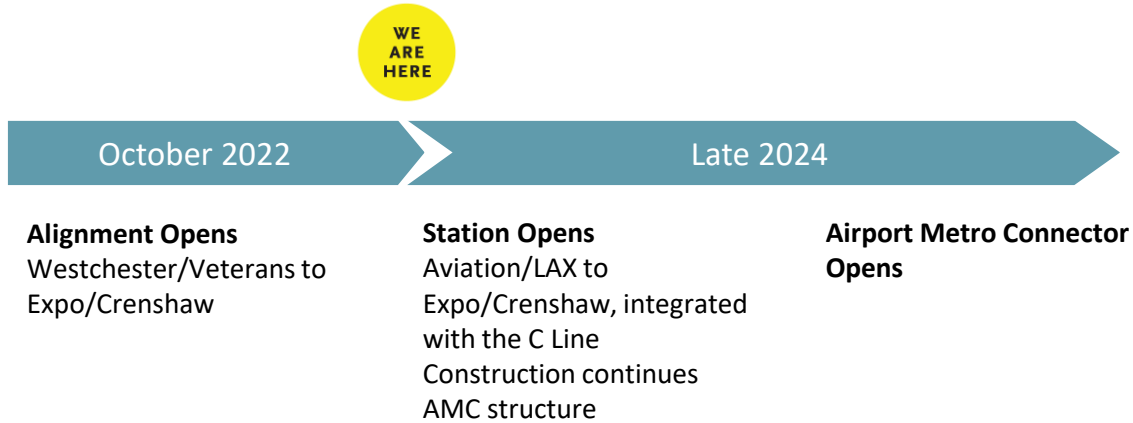
AMC Project Concept Renderings





AMC Project Concept Renderings

Project Schedule



ONGOING PUBLIC PARTICIPATION

C & K Line Operating Plan Update

- > **March to April 2023: Collected feedback with online survey and Public/Stakeholder Meetings**
- > **Surveys were collected:**
 - **In-person at Metro C and K Line Stations**
 - **On-Line at metro.net/C&KLineOpsPlan**
 - **At 323-GoMetro (323) 466-3876**
- > **Input collected was provided to Metro Board to determine the operating plan recommendation for consideration**

Stay connected to this project.



213.922.4998



laxconnector@metro.net



metro.net/laxconnector



[@metrolosangeles](https://twitter.com/metrolosangeles)



[losangelesmetro](https://www.facebook.com/losangelesmetro)

