

Welcome!

We will begin in a few moments.



We're working to improve the 5 in North County.

I-5 NORTH COUNTY ENHANCEMENTS PROJECT



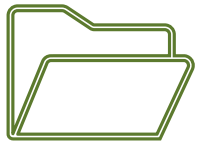
Housekeeping



This is a webinar. Attendee cameras are off, and microphones are muted.



Submit your questions by using the Q&A feature



This meeting is being recorded. Video file will be posted on our website at metro.net/i-5-enhancements.

Welcome! Thank you for joining us.

10 min Project Overview

Chloe Lee, Principal Community Relations Officer
Metro

25 min Upcoming Construction
Activities

Saroya Sandiford, Community Relations Manager
Metro

30 min Q&A / Discussion

Ginny Brideau, New Media Manager
Metro



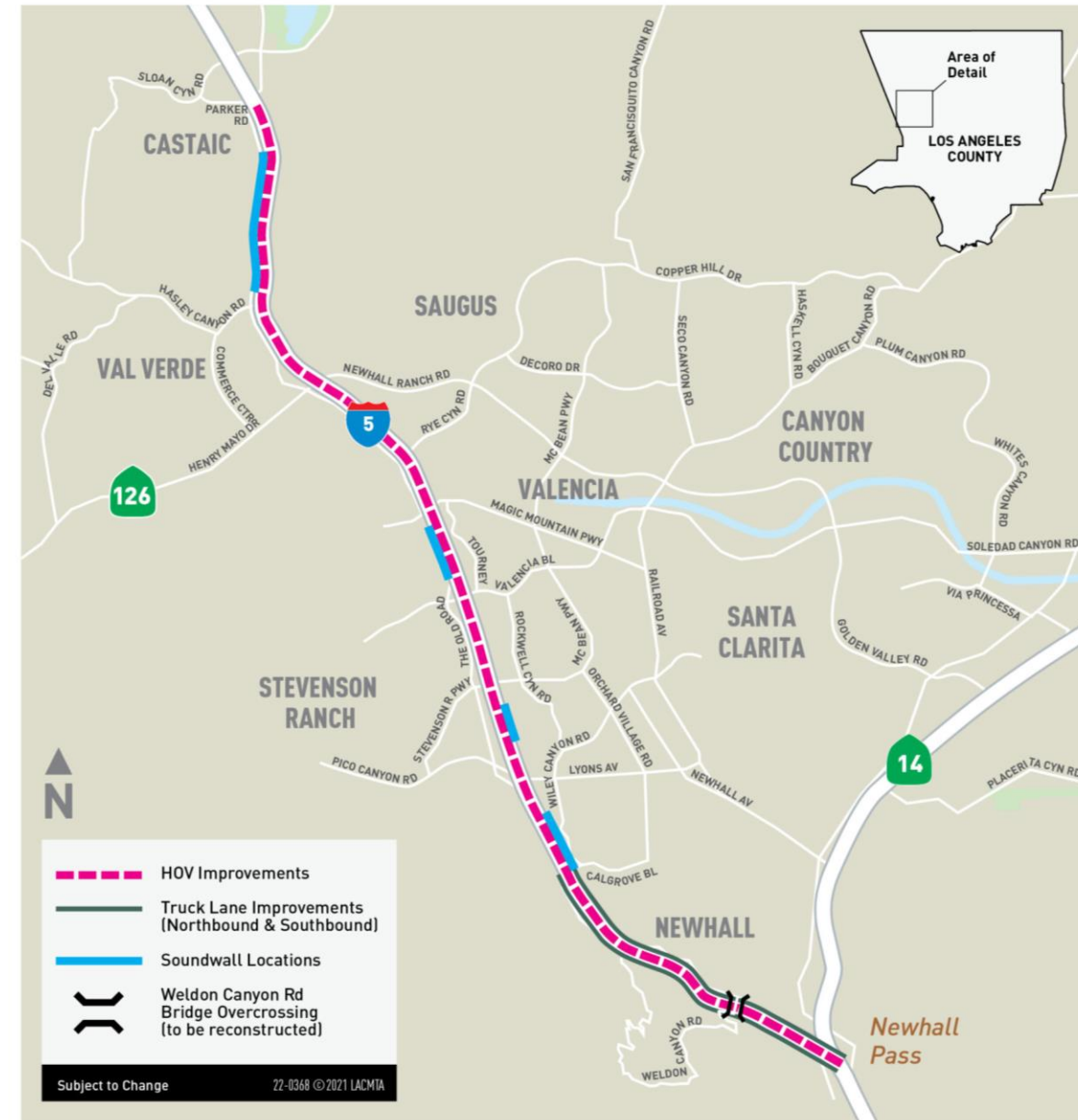
PROJECT OVERVIEW

Project Overview

Enhancements on I-5 between the SR-14 interchange and Parker Road in Castaic, along with Intelligent Transportation System (ITS) improvements on I-5 between the I-405 and I-210.

The scope of work includes:

- 14-miles of HOV/carpool lanes in each direction
- Four (4) sound walls segments (12 sound walls)
- Replacement of Weldon Canyon Rd bridge
- Seven (7) bridge widenings
- Extension of truck lanes
- 13.6-miles of median paving
- 43 Retaining walls
- Intelligent Transportation System Improvements



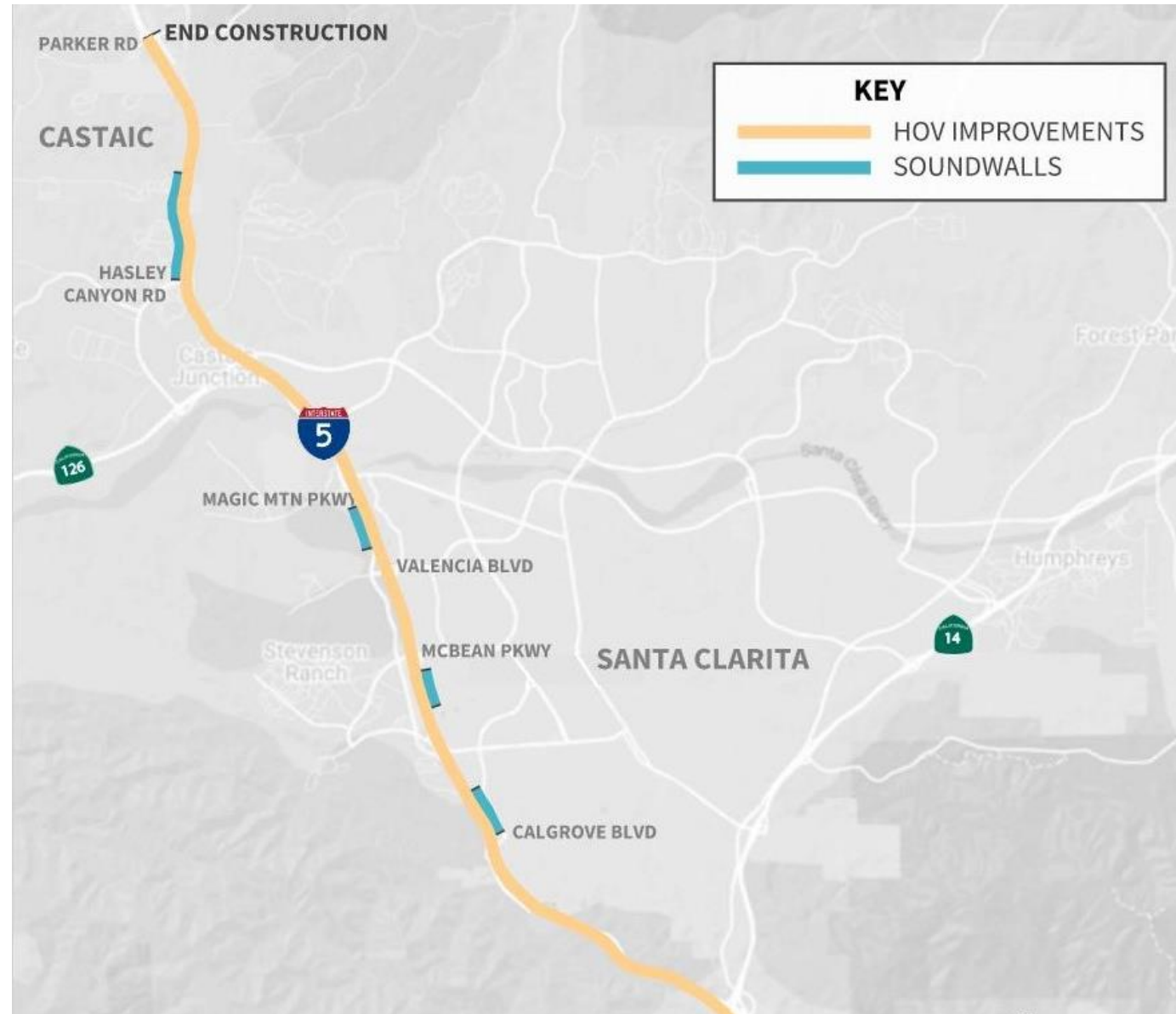
Sound Walls Segments

I-5 Southbound

- North of Hasley Canyon Rd
- Magic Mountain Pkwy - Valencia Bl

I-5 Northbound

- South of McBean Pkwy
- North of Calgrove Bl



UPCOMING CONSTRUCTION

Construction Update - Overview

Bridges	Walls	Center Median	Shoulders and Ramp
<p>Ongoing thru 2023</p> <ul style="list-style-type: none"> • Weldon Canyon Rd • Butte Canyon (I-5 between Pico Canyon Rd/Lyons Av and McBean Pkwy) • Castaic Creek • Gavin Canyon UC • Rye Canyon Rd 	<p>Ongoing thru Summer 2023</p> <ul style="list-style-type: none"> • Center median retaining walls, Valencia Bl to Lyons Av • Outside shoulder retaining walls, northbound and southbound I-5 between Calgrove Bl and Weldon Canyon Rd • Sound walls along southbound I-5 at Hasley Canyon Rd. 	<p>Ongoing thru 2023</p> <ul style="list-style-type: none"> • Drainage, signage, pavement/ concrete work project wide. • Installation of the project concrete batch plant at SR-126. 	<p>Starting Mid-2023</p> <ul style="list-style-type: none"> • Outside shoulder and ramp activity - drainage, signage, pavement/concrete work project wide.
<p>Upcoming 2023/2024</p> <ul style="list-style-type: none"> • Calgrove Bl • Magic Mountain Pkwy • Santa Clara OH 	<p>Upcoming 2022/2023</p> <ul style="list-style-type: none"> • Additional center median and shoulder retaining walls south of Calgrove Bl 	<p>Ongoing thru 2023</p> <ul style="list-style-type: none"> • Center median concrete paving 	<p>Fall 2023</p> <ul style="list-style-type: none"> • Outside lane reconstruction from Castaic Creek bridge to Parker Rd



Weldon Canyon Rd Overcrossing Bridge

Construction Status

- Concrete work for the bridge superstructure, Spring 2023. Freeway and local street closures may be required.
- Falsework removal requiring freeway closures, May 2023.
- Construction of street elements, such as bridge barrier, sidewalk, striping, and electrical work; Summer 2023.
- New bridge open to traffic, Summer 2023; existing bridge demolition, Summer/Fall 2023.



Weldon Canyon Overcrossing bridge construction progress through April 2023

Weldon Canyon Rd Overcrossing Bridge

Construction Status



Weldon Canyon Overcrossing bridge falsework installation, November 2022



Weldon Canyon Rd Concrete Placement



Concrete placement for the new Weldon Canyon Rd bridge in March 2023, with the use of lane closures on I-5

Weldon Canyon Rd Deck Concrete Placement



Concrete placement for the new deck on Weldon Canyon Rd bridge in May 2023



Weldon Canyon Rd Deck Concrete Placement



Concrete placement for the new deck on Weldon Canyon Rd bridge in May 2023



Weldon Canyon Falsework

Falsework Removal: Temporary structures used to support bridge construction that will span the full width of I-5.

Closure Schedule:

- Northbound directional closures
 - May 22 from 10pm-4am
 - May 23 from 10pm-4am
 - May 24 from 10pm-4am
 - Contingency date: May 25 for NB or SB, if needed
- Southbound directional closures
 - May 30 from 10pm-4am
 - May 31 from 10pm-4am
 - June 1 from 10pm-4am

Closure Hours: Mon-Thur, 10pm-4am

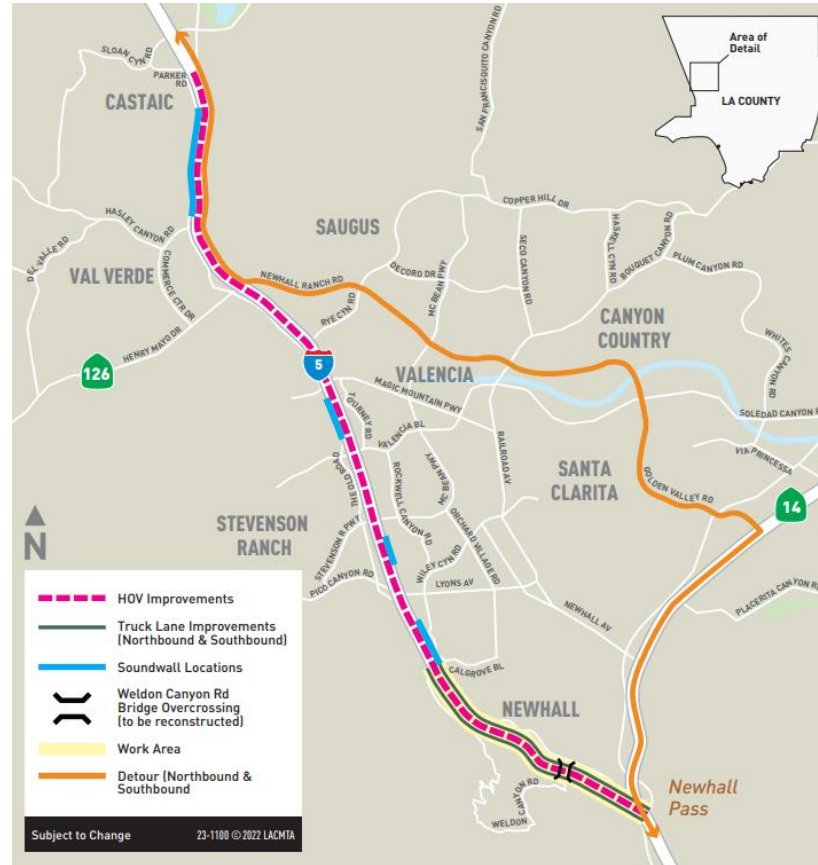
*No closures from May 26 to May 29 for Memorial Day



Weldon Canyon Rd Bridge falsework installation (temporary structures)

Closures and Detours - Overview

- **I-5 Freeway Hard Closure Limits:** Calgrove Bl and SR-14
- **Primary Detour Routes:** SR-14, Golden Valley Rd/Newhall Ranch Rd
- **Local Access:** Available on I-5 between Calgrove Bl and Newhall Av
- **Full closure hours:** Weeknights (Mon-Thurs), 10pm-4am



Primary Detour (truck route)

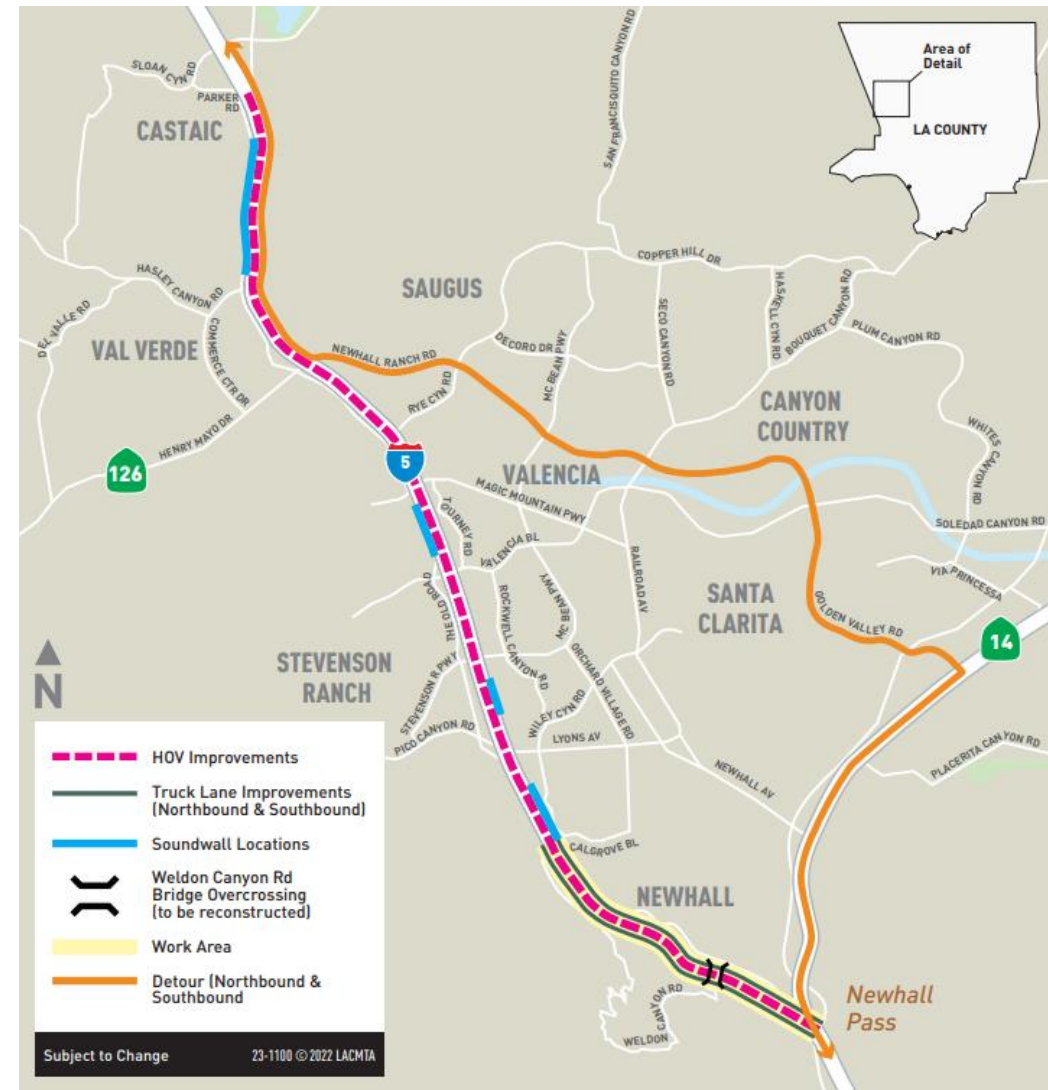


Local Access Detour

Detailed Closures and Detours

Primary Detour Routes

- Northbound I-5
 - Transition to SR-14 from I-5 northbound
 - Exit Golden Valley Rd
 - Continue west on Golden Valley Rd/Newhall Ranch Rd
 - Proceed to I-5 on-ramp
- Southbound I-5
 - Exit Newhall Ranch Rd from I-5 southbound
 - Continue east on Newhall Ranch Rd/Golden Valley Rd
 - Proceed to SR-14 southbound on-ramp
 - Transition from SR-14 to I-5 southbound
- Southbound SR-14
 - Exit Golden Valley Rd from SR-14 southbound
 - Continue west on Golden Valley Rd/Newhall Ranch Rd
 - Proceed to I-5 on-ramp



Primary Detour (Truck Route)



Detailed Closures and Detours

Local Detour Routes

- Local Northbound
 - Transition to SR-14 from I-5 northbound
 - Exit Newhall Av
 - Continue west on Newhall Av
 - Right on Railroad Av
 - Left on Lyons Av
 - Proceed to I-5 northbound on-ramp
- Local Southbound
 - Exit Calgrove Bl
 - Continue south on The Old Road
 - Continue south on San Fernando Rd
 - Continue south on Sepulveda Bl
 - Proceed to I-5 southbound on-ramp
- Southbound SR-14
 - Exit Newhall Av from SR-14 southbound
 - Continue east on Newhall Av
 - Right on Railroad Av
 - Left on Lyons Av
 - Proceed to I-5 on-ramp



Local Access Detour



Wayfinding Signage - Third-Party Coordination

- Changeable Message Signs (CMS), and detour wayfinding signage as per CalTrans standard requirements.
- Coordination with Google Maps and Waze for navigation apps to show the closures.
- Coordination with emergency responders to understand closures and provide on-site traffic management.



Detour signage and lane closures at Calgrove Bl

Overhead Sign Removal: Summer 2023

Locations:

- Southbound I-5 between Weldon Canyon Rd and SR-14
 - Temporary signs are placed in lieu of the permanent sign removal
 - Permanent sign will be installed in the future
 - Requires full nighttime SB I-5 closures per sign removal



Existing sign structures that span the full width of the freeway that will be replaced

I-5 Bridge Construction Activity for Future HOV Lanes

Calgrove Bl to Weldon Canyon Rd (Gavin Canyon Undercrossing Bridge)

Summer/Fall 2023 Construction Activities

- Bridge foundation work – mobilizing cranes, auger drilling, concrete and abutment work.
- Soil backfill
- Closures of The Old Road are anticipated; restriping of The Old Road may be required.

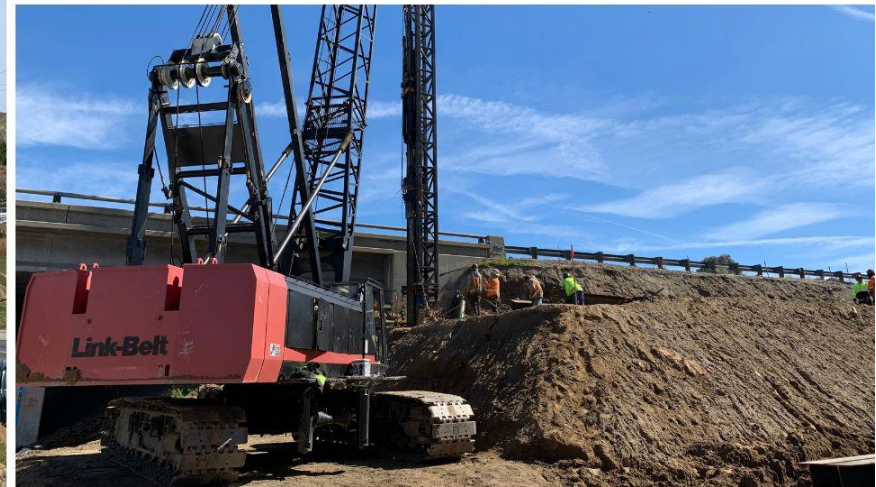


Progress photos of Gavin Canyon Undercrossing foundations of January 2022

I-5 Bridge Construction Activity for Future HOV Lanes

Rye Canyon Rd and Calgrove Bl Undercrossings

- Concrete removals
- Form, rebar, and concrete work
- Concrete girder installation, Fall 2023
- Worksite traffic control and closures of Rye Canyon Rd and Calgrove Bl are anticipated (ongoing)



Excavation, shoring, and pile driving activity on Rye Canyon Rd in 2022/2023

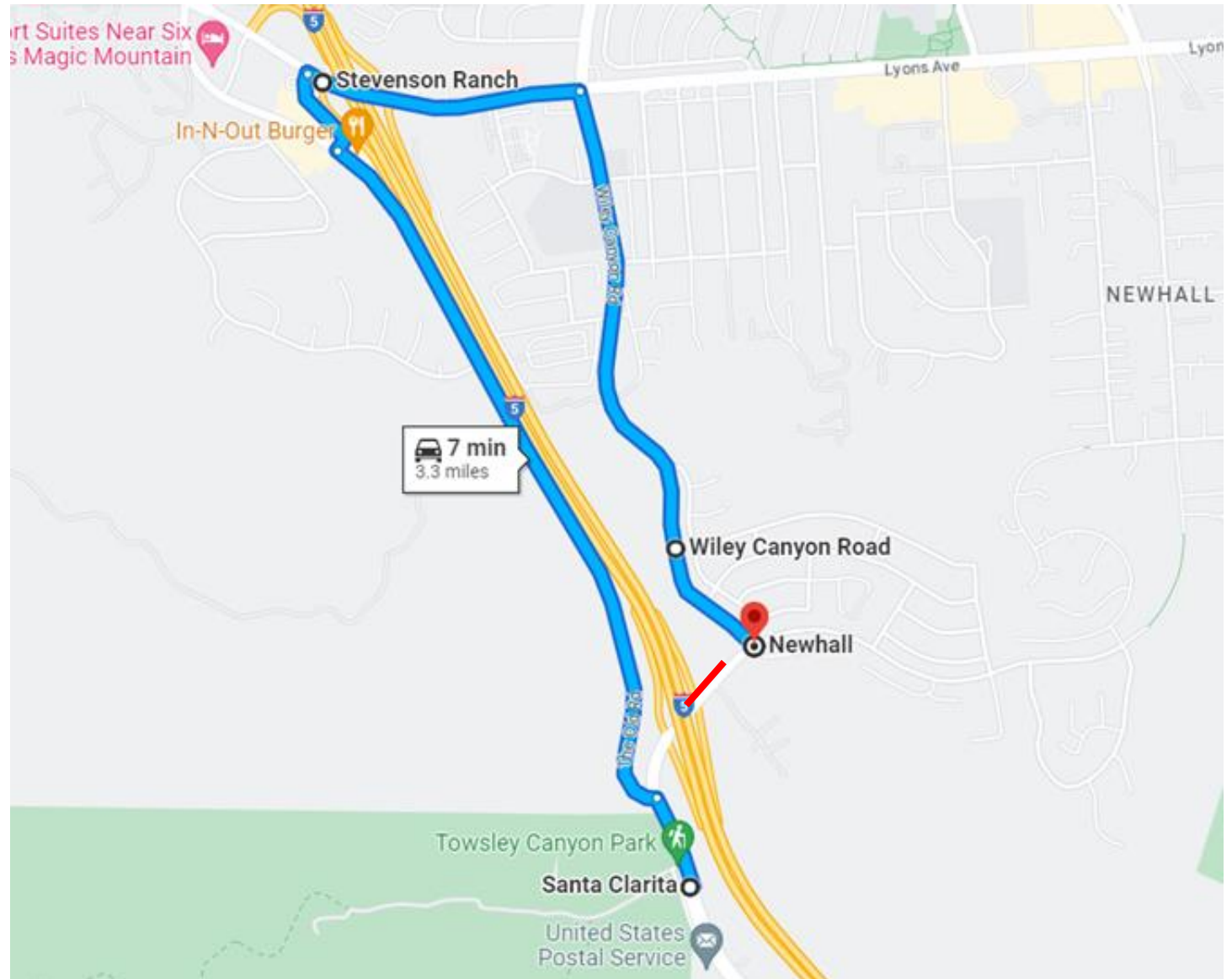
I-5 Bridge Construction Activity for Future HOV Lanes

Calgrove Bl Closures and Detours - Upcoming

Schedule: Weeknights and Saturdays as needed, 8pm-5am, anticipated Summer 2023.

Closure Limit: Calgrove Bl full closure between The Old Road and Wiley Canyon Rd

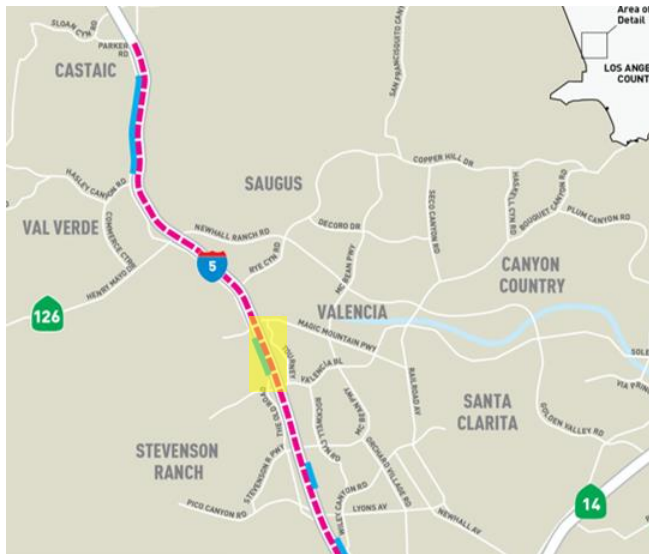
- **Detour 1:** Continue straight on the Old Road, right on Chiquella Ln or Lyons Av/Pico Canyon Rd, right on Wiley Canyon Rd, continue to Calgrove Bl
- **Detour 2:** Traveling westbound on Calgrove Bl, turn right on Wiley Canyon Rd, left on Lyons Av/Pico Canyon Rd, left on Chiquella Ln or The Old Road, continue to Calgrove Bl



I-5 Bridge Construction Activity for Future HOV Lanes

Santa Clara River Overhead Crossing

- Concrete removals
- Shoring and excavation for new bridge foundations
- Pile driving for the column and abutment foundations
- Form, rebar, and concrete work
- Worksite traffic control for pedestrian walkway and bike lanes



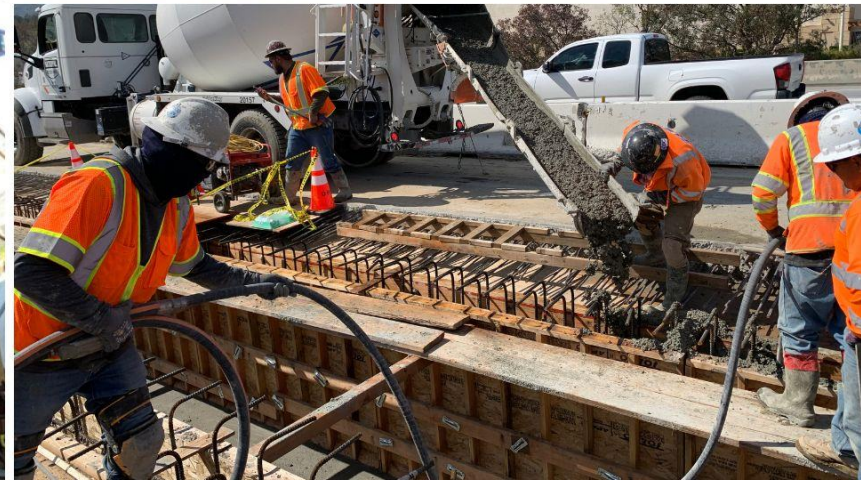
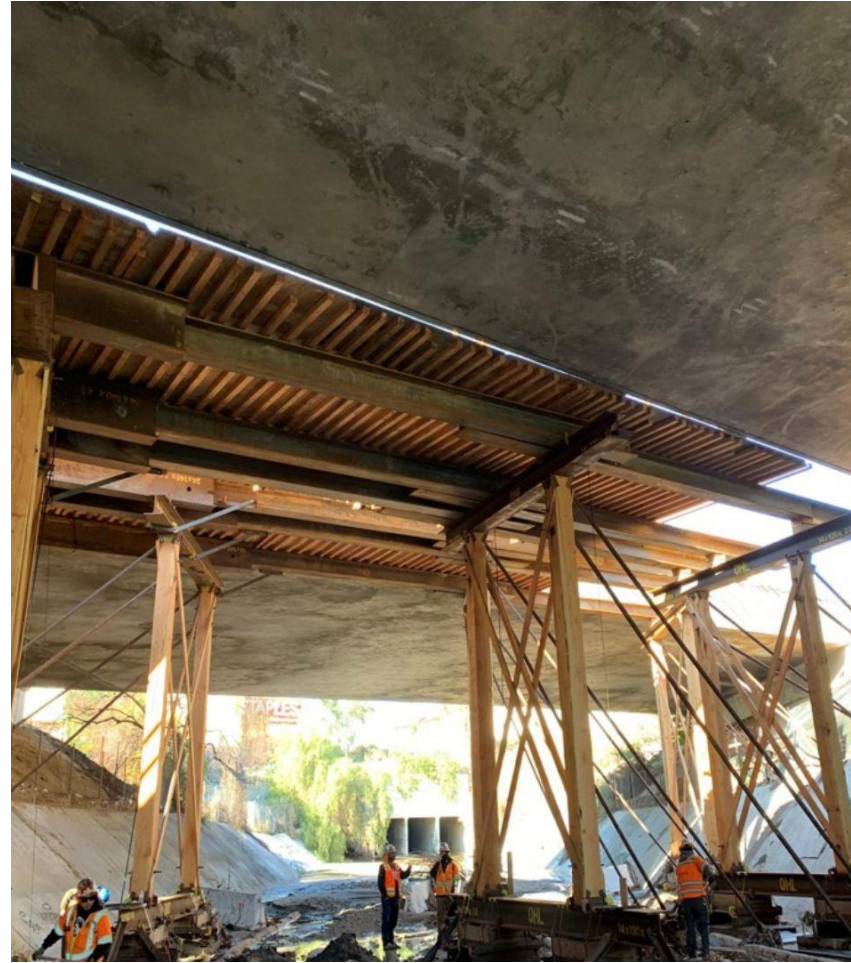
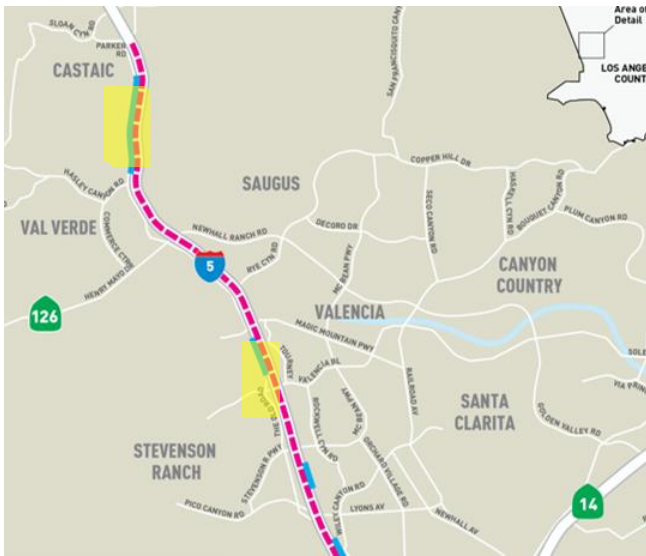
Satellite view of existing Santa Clara River Overhead Crossing

I-5 Bridge Construction Activity for Future HOV Lanes

Butte Canyon Bridge and Castaic Creek Bridge

Summer/Fall 2023 Construction Activities

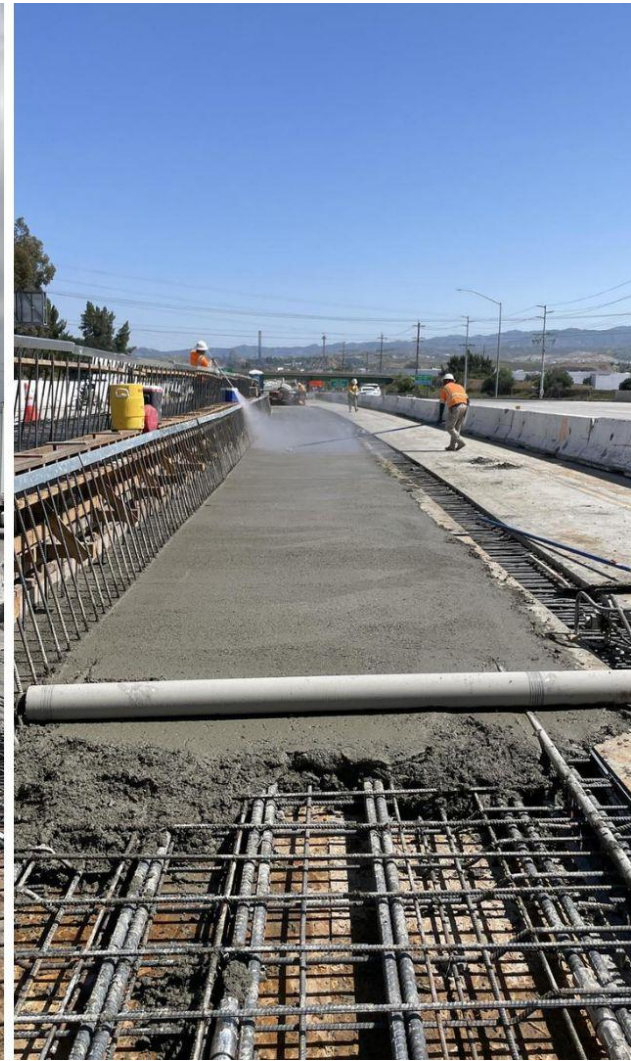
- Falsework removal
- Rebar, concrete, and form work for bridge structures
- Concrete barrier work and paving



Progress photos of Castaic Creek and Butte Canyon Bridges as of April 2023

I-5 Bridge Construction Activity for Future HOV Lanes

Butte Canyon Bridge and Castaic Creek Bridge



Progress photos of Castaic Creek and Butte Canyon Bridges as of May 2023

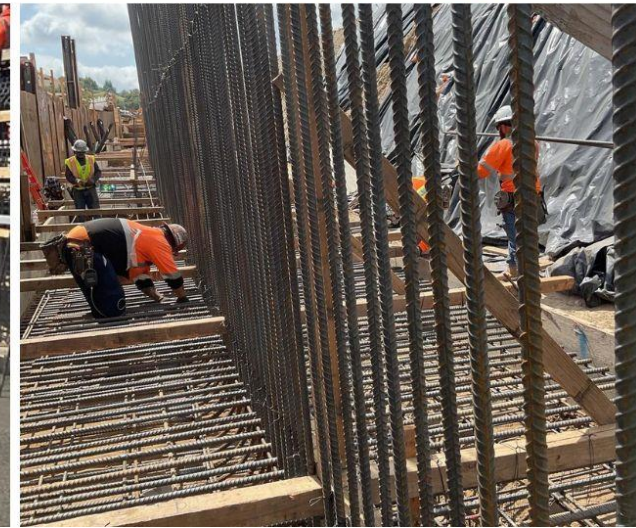
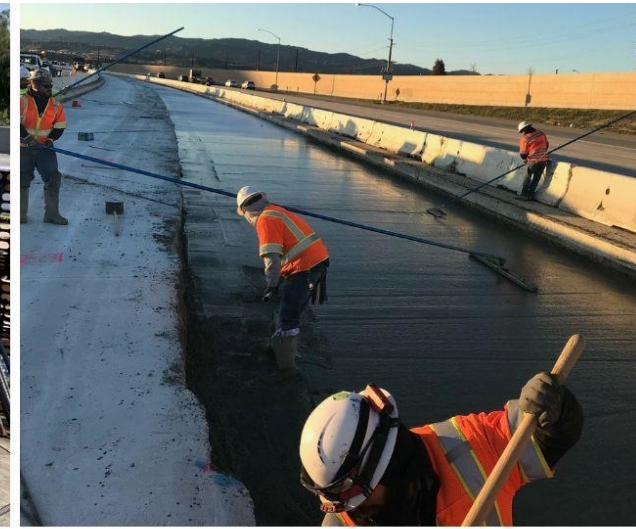
Center Median and Retaining Walls - Ongoing



Center median construction activities including excavation, backfill, rebar and concrete work.



Center Median and Retaining Walls - Ongoing



Center median construction activities including excavation, backfill, rebar and concrete work.



Sound Wall Construction at Hasley Canyon Rd

Southbound I-5 between Villa Canyon Rd and Hasley Canyon Rd

Activity Overview

- Auger drilling, concrete and rebar foundation work, thru Spring 2023
- Concrete barrier and backfill work, Summer 2023
- Masonry block work, Summer/Fall 2023
- Work proceeding from north to south



Sound wall construction location (left) and construction activity (right), including drilling, concrete, and rebar work.

Noise and Dust - Monitoring and Mitigation

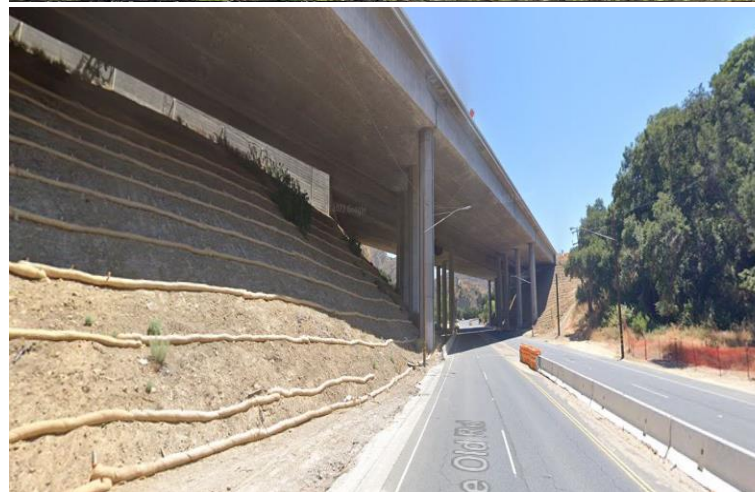
Noise Mitigation

- Noise control plan, administered by a qualified acoustical engineer.
- Noise monitoring, reporting, and mitigation required if noise exceeds Metro/Caltrans criteria.
- Sensitive noise receptors will be used to monitor permitted levels.

Dust Mitigation/Stormwater Management

- Fugitive dust and stormwater management plans, administered by enviro. engineers.
- Typical mitigations include water trucks for dust, slope erosion control, track out control, reduced vehicle speeds, covering inactive stockpiles, and storm drain protections.
- The overall project schedule remains on-track; delays to specific operations from recent rain are being mitigated.

Coordinated responses to public complaints.



Examples of typical erosion control and dust mitigation methods used on the project

55 MPH Speed Limit – Corridor Wide

Work Zone Driving Tips

- Stay alert
- Merge early
- Avoid distractions
- Don't speed

Fines are doubled in freeway work zones.



Work zone speed limit signage



Upcoming Holiday Schedule - No Lane Closures

Memorial Day

Friday, May 26 at 8pm – Tuesday, May 30 at 5am

Independence Day

Friday, June 30 at 8pm – Wednesday, July 5 at 5am

Holiday Closure Restrictions

- New Year's Day
- Presidents Day
- **Memorial Day**
- **Independence Day**
- Labor Day
- Veteran's Day
- Thanksgiving
- Christmas Day

2023 MAY						
SUNDAY	MONDAY	TUESDAY	WEDNESDAY	THURSDAY	FRIDAY	SATURDAY
	1	2	3	4	5	6
7	8	9	10	11	12	13
14	15	16	17	18	19	20
21	22	23	24	25	26	27
28	29	30	31			

2023 JUNE						
SUNDAY	MONDAY	TUESDAY	WEDNESDAY	THURSDAY	FRIDAY	SATURDAY
				1	2	3
4	5	6	7	8	9	10
11	12	13	14	15	16	17
18	19	20	21	22	23	24
25	26	27	28	29	30	

2023 JULY						
SUNDAY	MONDAY	TUESDAY	WEDNESDAY	THURSDAY	FRIDAY	SATURDAY
						1
2	3	4	5	6	7	8
9	10	11	12	13	14	15
16	17	18	19	20	21	22
23	24	25	26	27	28	29
30	31					



I-5 NCEP Community Meeting

Save the Date

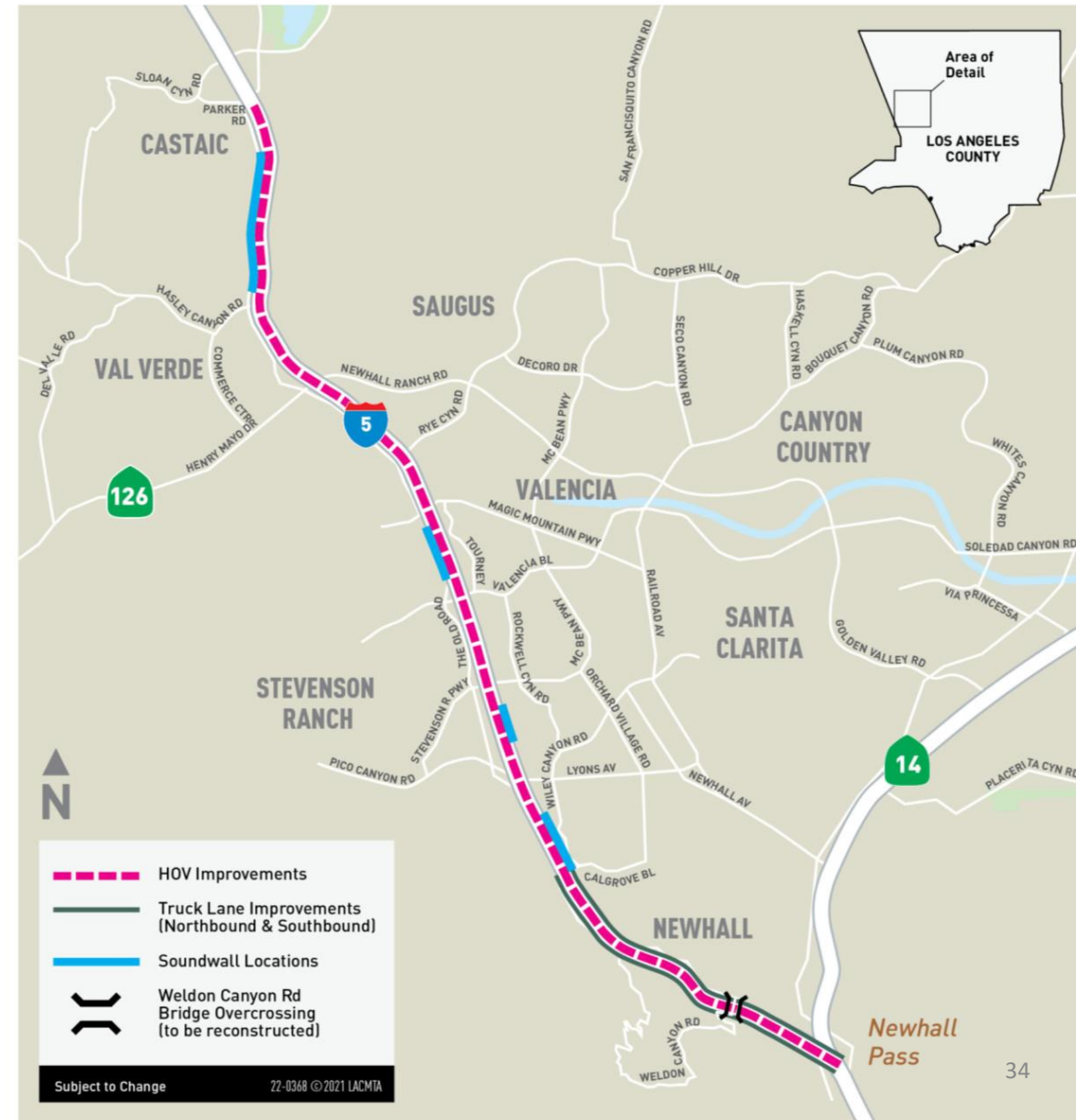
I-5 North County Enhancements Project Construction Update Community Meeting

Wednesday, August 23, 2023, 6:00 - 7:30pm

Zoom Link: us02web.zoom.us/j/99714777647

Webinar ID: 997 1477 7647

Call-in: (213) 338-8477



I-5 North County Enhancements Project Contacts



Saroya Sandiford

Community Relations Manager
sandifords@metro.net



Chloe Lee

Principal Community Relations Officer
leec5@metro.net

Project Hotline



213.922.2772



15enhancements@metro.net



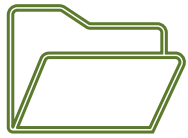
metro.net/i-5-enhancements



Using Zoom & Submitting Questions



Submit your questions by using the Q&A feature



This meeting is being recorded. Video file will be posted on our website at metro.net/i-5-enhancements.



213.922.2772



I5enhancements@metro.net



metro.net/i-5-enhancements