

# Starting soon...



> This conversation will be recorded and shared afterwards online and via email



> You can submit your questions in chat

- We will announce last call for questions 15 minutes before the end of the presentation



> If joining by computer, 'raise your hand' to join queue



> If joining by phone, press \*9 to 'raise your hand' to join queue

- When your phone number is called, press \*6 to unmute

# Panelist

- **Marlon Walker**, Metro Manager
- **Ned Racine**, Principal Community Relations Officer
- **Jeanmarie Hance**, Community Relations Manager
- **Joanna Amador-Dempsey**, Construction Communications Coordinator

# Next stop: improving rail service.

## DIVISION 20 PORTAL WIDENING AND TURNBACK FACILITY



**Metro**

**Construction Update**

Division 20

May 20, 2021

# Welcome and Agenda

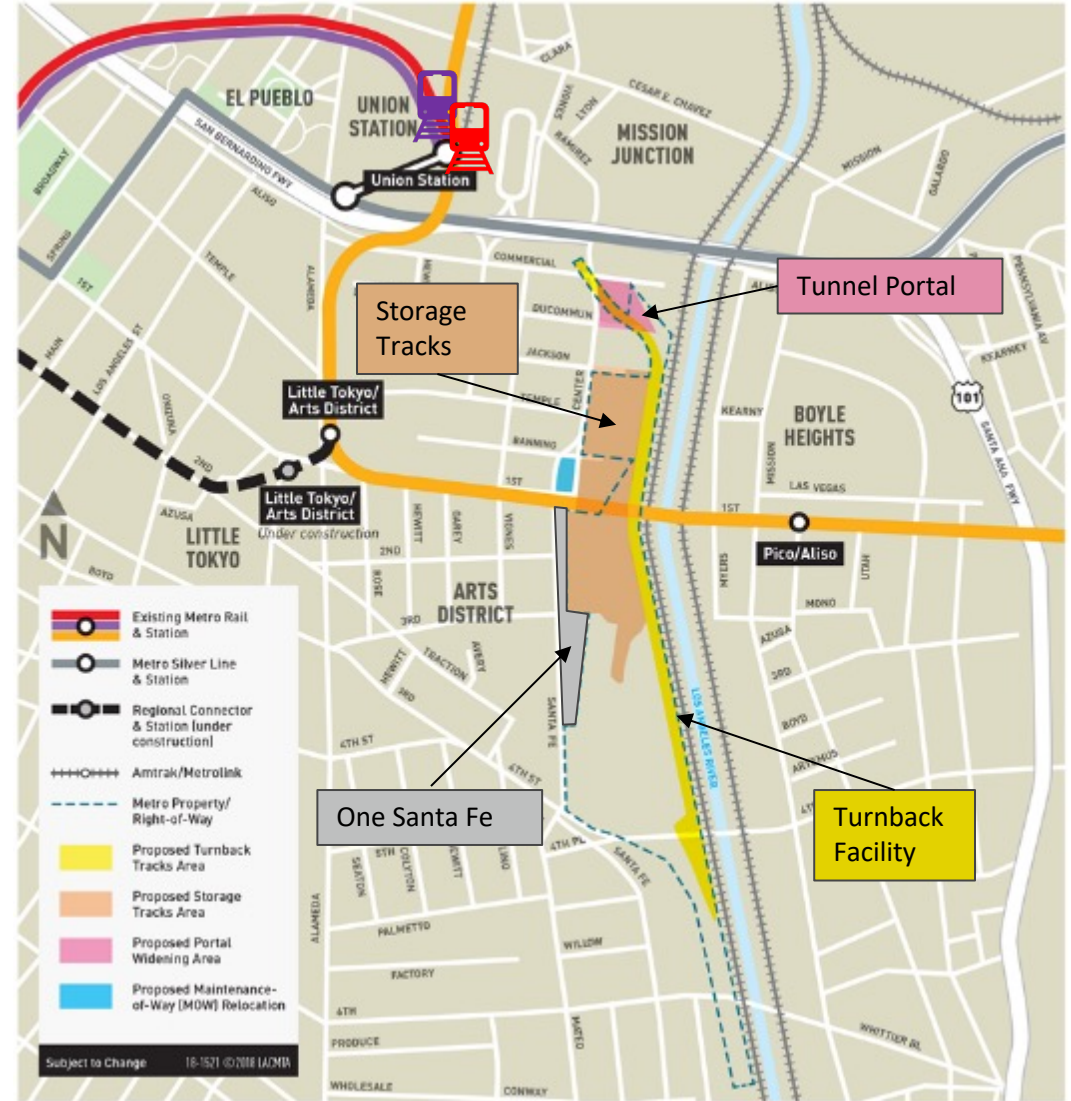
## Thank you for joining us!

- > Project overview, timeline and schedule
- > Construction look ahead
- > Construction mitigations
- > Center Street mitigations
- > How to reach us

# Project Overview

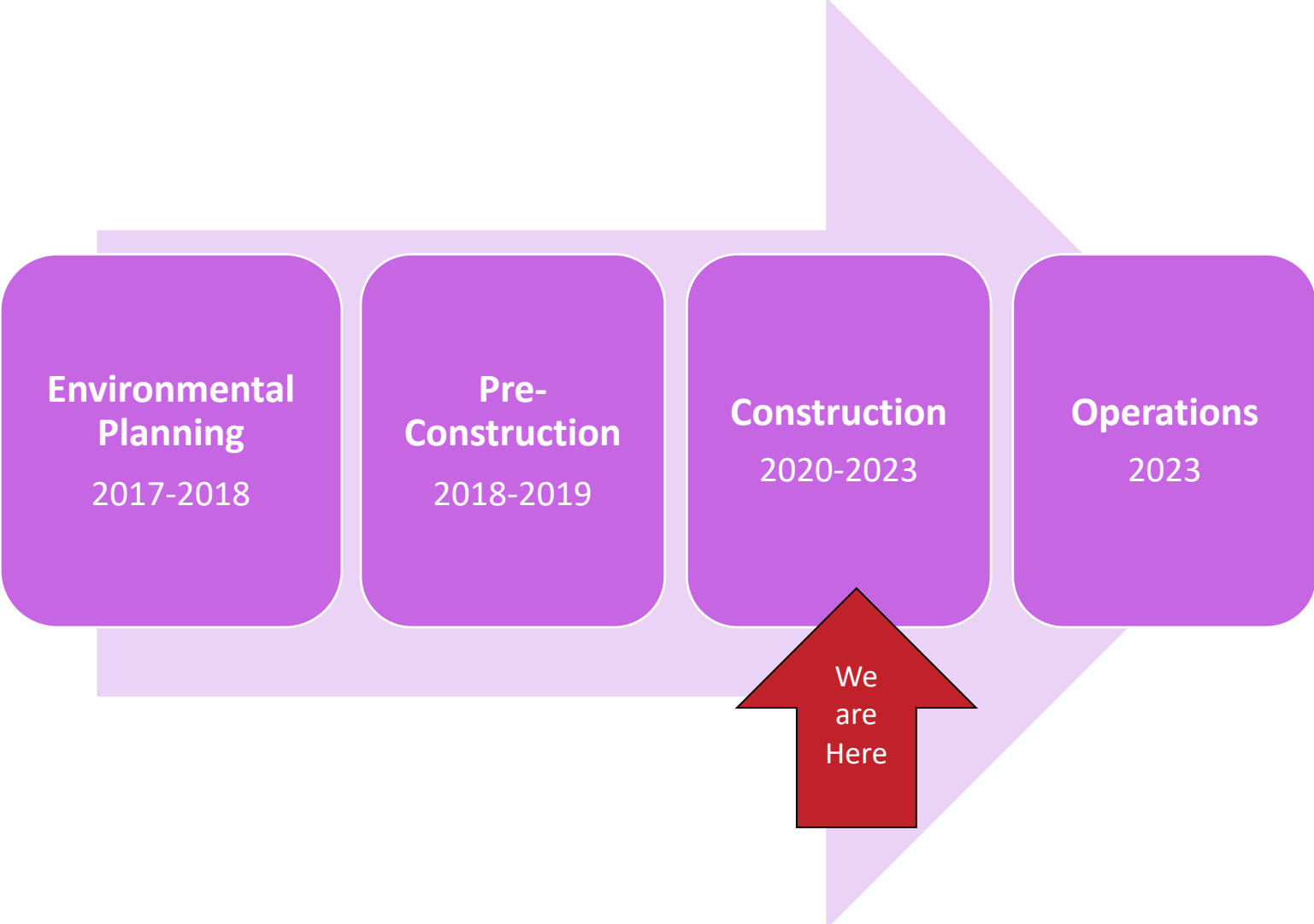
- > Operational improvements to Metro's Division 20 Rail Yard will accommodate increased service levels on the Metro Red & Purple (B and D) Lines
- > Improvements include:
  - Widening of heavy rail portal
  - New turnback facility
  - Expansion and reconfiguration of rail storage tracks
- > Benefits
  - Faster and more frequent service

[Link to flyover video of Division 20](#)



Exact location of turnback tracks and storage tracks to be determined.

# Project Timeline





GREEN OVERHEAD HIGHWAY SIGN

Life Storage

CANNABIS FOR THE CULTURE

# Recent Schedule

*\*Schedule is subject to change*

| ACTIVITY                                 | DEC | JAN | FEB | MAR | APR | MAY |
|--|-----|-----|-----|-----|-----|-----|
| <b>North of 1<sup>st</sup> St Bridge</b> |     |     |     |     |     |     |
| Portal Widening/Wall                     |     |     |     |     |     |     |
| Utility Work/Grading                     |     |     |     |     |     |     |
| <b>South of 1<sup>st</sup> St Bridge</b> |     |     |     |     |     |     |
| Utility Relocation Work                  |     |     |     |     |     |     |
| Bridge Modifications                     |     |     |     |     |     |     |
| Removal and Installation of Tracks       |     |     |     |     |     |     |

# Current Work

## Track Demolition and Reconfiguration

- Two tracks have been removed; three more tracks will be demolished.
- Out of 16,000 feet of track, 5,000 feet will be removed.
- Quicker train turnaround requires construction of 6.2 miles of new track.

*Demolition and reconstruction of storage tracks north of 1<sup>st</sup> Street Bridge*



# Current Work (Continued)

*Looking southeast from the North Yard, the camera caught two manhole structures still in their protective covers. The 1<sup>st</sup> Street Bridge can be seen in the upper right corner.*



# Current Work (Continued)

## > Moving Utilities and Adding Train Power

Fiber optic, track signal lines, sewer, storm water, water service must be moved. This work will continue for the next year.



*Excavation east of One Santa Fe building (center photo shows traction power substation equipment)*

# Current Work (Continued)

## First Street Bridge Modifications

- Worked started September 2020.
- Bridge repaired and upgraded.

*Contractor will remove two bents to allow additional tracks north and south of the bridge.*



*Photo courtesy J. Patterson, PE*

# Current Work (Continued)

## First Street Bridge Modifications (Continued)

- Micro piling adds more support.
- Bent (support) removal to allow more train tracks to run under the bridge.

*To provide more support for the remaining bents, workers are filling the diaphragms in the bridge supports.*



# Current Work (Continued)

## Portal Widening

- Portal width will be doubled from two tracks to four.
- This work will continue for more than a year.

*One additional track will be added on each side of the fence on the right.*



# Current Work (Continued)

## Portal Widening (Continued)

- The goal of portal widening is trains heading to North Hollywood (Red Line) and UCLA (Purple Line) every 90 seconds.

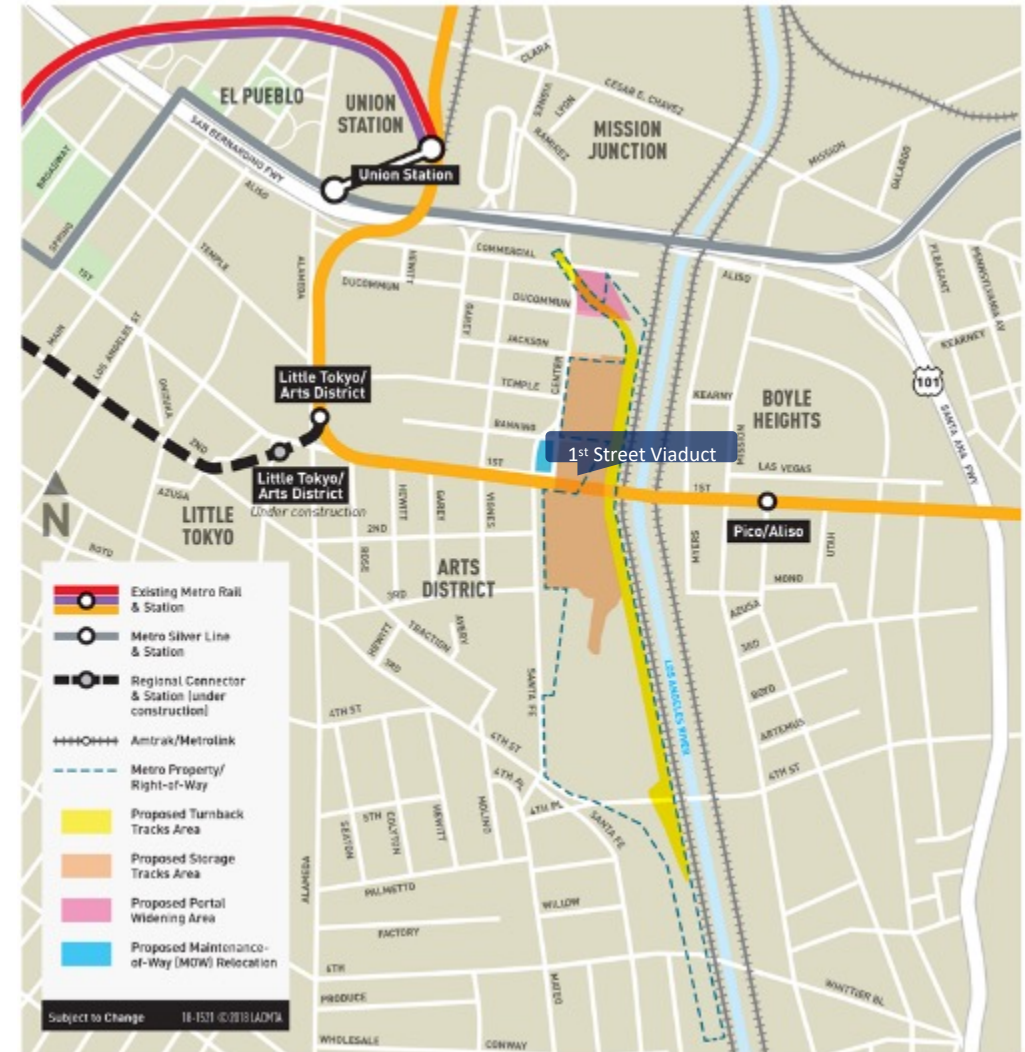
*Here is another view of the portal widening. This photo looks northwest to Union Station.*



# Upcoming Work

*\*Work is subject to change*

- > Utilities Installation
- > Site surveying
- > 1st Street Bridge modifications
  - Partial demolition and construction
- > Utility installation and relocation of underground conduits, sewer and waterlines
- > Excavation of portal wall
- > Addition of new yard power system



*Exact location of turnback tracks and storage tracks to be determined.*

# Nighttime Noise Variance Granted

- > Because work is being performed in an active rail yard, the Portal Widening Project contractor must delay certain work until after Metro Rail Operations active hours.
- > Los Angeles Police Commission has approved a Nighttime Noise Variance (NNV) from 9pm to 3pm through July 2021.
- > The NNV minimizes construction impacts on the surrounding community by accelerating some work.

# Construction Mitigations

> **Best practices on the construction site:**

- Equipment and staging areas shall be located away from noise-sensitive receivers and noise barriers should be used when possible
- Minimize high impact devices such as jackhammers and hoe rams
- Utilize lower impact devices such as concrete crushers and pavement saws
- Refrain from idling of equipment
- Use frequent watering to reduce dust

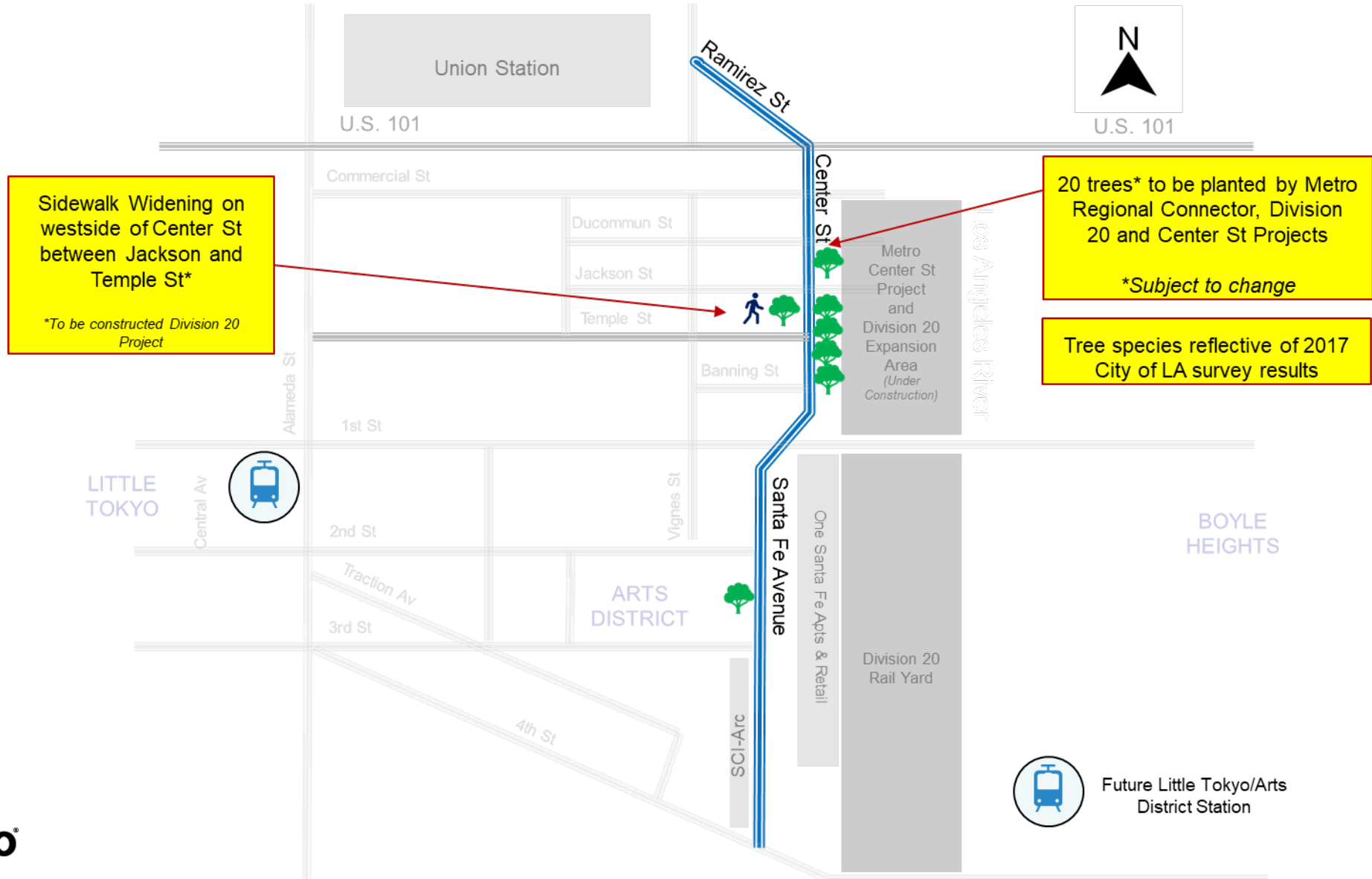
*Water trucks work to control dust without creating mud*



# End-of-Project Mitigations

- > On the east side of Center Street from Jackson Street to Banning Street, the Portal Widening Project will provide:
  - Street lighting
  - Pedestrian lighting
  - Tree wells
  - Vines
  - The Arts District reviewed these streetscape elements
- > The Portal Widening Project will provide a 10-foot-wide sidewalk on the west side of Center St from East Temple St to Jackson St and will provide an 8-foot-wide sidewalk on the east side from Jackson St to Banning St

# End-of-Project Mitigations (Continued)




# Eastside Access Improvement Project – Overview

The Eastside Access Improvement will implement streetscape, pedestrian safety and bicycle access improvements within a ½ mile radius around the future Metro Little Tokyo/Arts District Station at 1st/Central.

This project is funded by TIGER Grant and Measure R

 Walk/Bike Esplanade

 Class II Bike Lanes

 Storm Parkways (Biowales)

 Street Trees

 Street Light LED Conversion

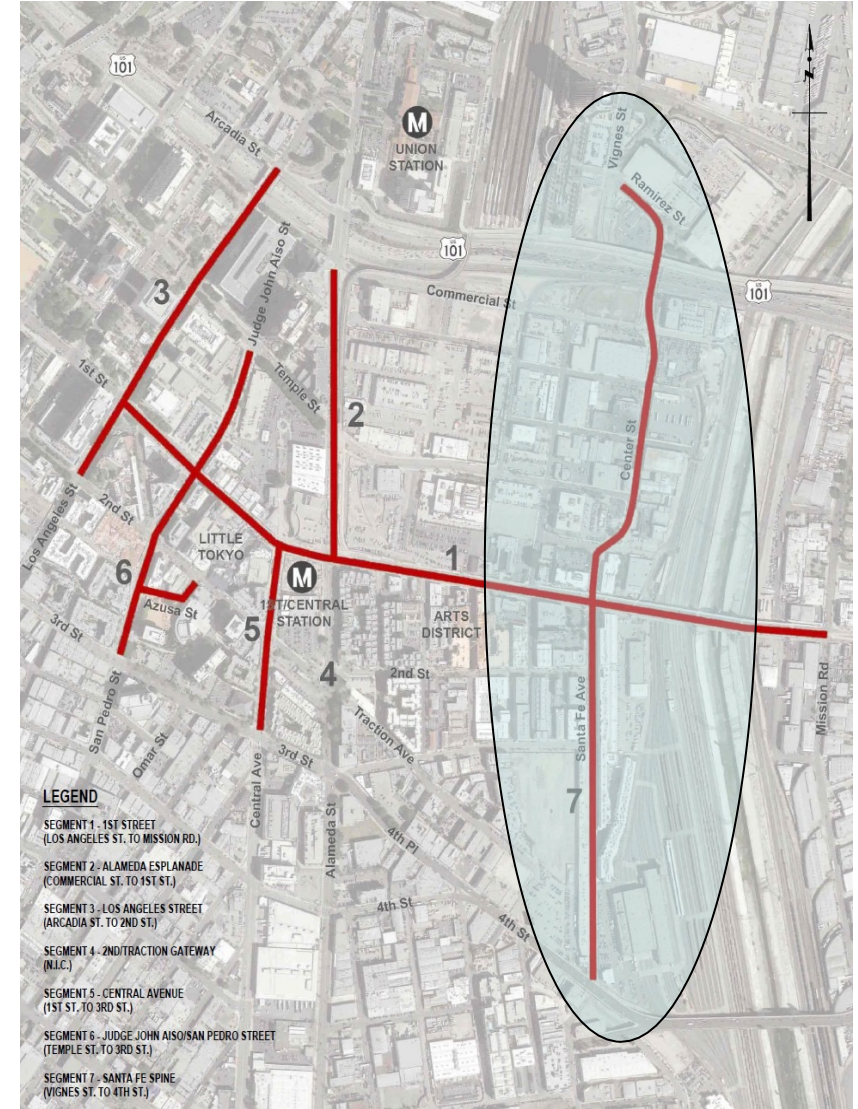
 Wayfinding and Signage

 Crosswalk Installation

 Decorative Crosswalk Restoration

 Street Furniture Restoration

 ADA Curb Ramp Installation



# Segment 7: Santa Fe Spine – Arts District Class II Bike Lanes



# End of Project Mitigations (Continued)



**Jeanmarie Hance**  
Community Relations Manager



213.922.2780



*[metro.net/eastsideaccess](http://metro.net/eastsideaccess)*



*[oneandcentral@metro.net](mailto:oneandcentral@metro.net)*

# Stakeholder Outreach

- > The project holds bimonthly virtual construction update meetings with stakeholders
- > Meeting invitations are sent to stakeholders via our eblast list
- > One Santa Fe management sends invitations to its residents and shops via email and its building newsletter
- > Weekly eblasts of construction updates are sent to more than 40 subscribers (including One Santa Fe, SCI-Arc, and the Arts District BID)
- > Construction Notices are sent to a list of 600 subscribers



## Construction Look Ahead: Week of Saturday, January 9 through Friday, January 15

Metro thanks One Santa Fe residents for their continued patience as construction continues. Below is a summary of anticipated construction activities for the week ahead in the Division 20 Rail Yard.

### Construction Weekend Work (Saturday, January 9)

- Construction crews will not be working this Saturday, January 9.
- A Metro contractor will continue to work underneath the 1st Street Bridge and continue work on underground utilities in the rail yard.

### Utility Work (Monday through Friday)

- Excavation activities to support duct bank installation work will continue throughout the Division 20 Rail Yard.
- Sound blankets are currently being implemented around our utility road area to minimize noise impacts for this activity.

# How to Reach Us

## > Call us on the Project Hotline: 213-922-6934

- For project questions, concerns and complaints
- Live during construction work hours
  - Monday through Friday, 7am to 5pm
- After 5pm: Leave a voicemail; staff with return call within 24 hours
- Callers can speak with a person via the Hotline after 5pm by pressing 1

## > Project Email: [purplelineext@metro.net](mailto:purplelineext@metro.net)

- Staff will reply within 24 hours

## > Stay Connected

- Construction notices posted online at [metro.net/division20](http://metro.net/division20)
- Receive email project updates and construction notices