



I SAVED BIG  
AND WE WENT  
TO HAWAII!

Start saving today!

Metro reduces the cost of your vanpool lease by providing a monthly subsidy of up to \$400 to qualified vanpools.

Contact your Employer Representative for more information, or call Metro at 1.800.COMMUTE (option #3). You can also visit [metro.net/vanpool](http://metro.net/vanpool) to find a vanpool in your area or learn how to start one.

07-2577DW ©2007 LACMTA

Get in. Join a Metro Vanpool.



**Metro**  
America's Best



# Think “carpool.” Then think bigger.

MILES OF CARPOOL LANES - JUST FOR US!

WISH YOU WERE HERE?

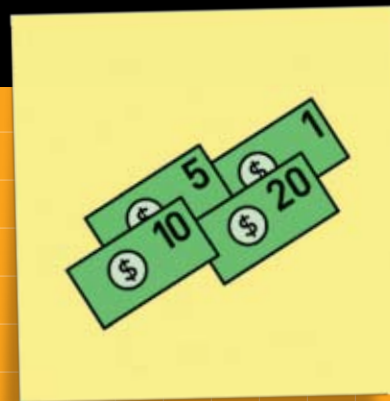
START A METRO VANPOOL.

Vanpools are similar to carpools, but they involve more people, bigger vehicles and longer commutes. And along with those bigger numbers come bigger savings: you'll spend less on fuel, give your own vehicle a rest, and increase quality time during your commute.

So how does it work? Riders usually travel 30 miles or more (round-trip) to work on a regular basis. Each van seats 7 to 15 passengers. The total cost of the vanpool lease, plus fuel and maintenance costs, are split between vanpool members. One person usually serves as a driver/coordinator and handles routine maintenance in exchange for a discounted or free ride each month.\* **And everyone saves time...and money.**

\* A typical driver fare discount is 50%.

Cut your commuting costs.



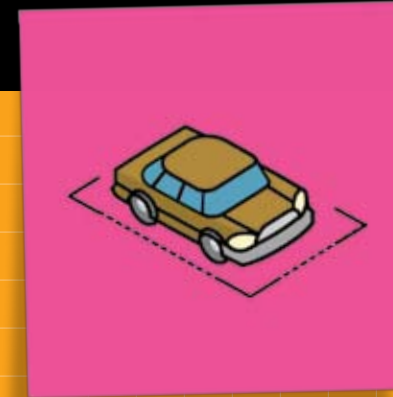
**Metro Vanpool fares average \$140/month.** Consider that, on average, driving alone to work costs \$230/month. Vanpooling delivers a 30% savings!

Save time.



**Shave 20 minutes off your daily commute.** There are 237 miles of carpool lanes out there for you and your vanpool. So why waste time in traffic?

Park your car.



**Park and Ride lots all over are waiting for you.** Just park, get in your Metro Vanpool and you're on your way, leaving the high cost of parking behind.