

# **Metro Orange Line Extension Project Update October 28, 2009**

# Metro Orange Line Extension



## Three Routes:

- o Existing North Hollywood to Warner Center to remain
- o New North Hollywood to Chatsworth Route
- o New Chatsworth to Warner Center Route

# Metro Orange Line Extension

<b>Distance –</b>	<b>Four (4) miles (Canoga Station to Chatsworth Metrolink Station)</b>
<b>Travel Time &amp; Average Speed</b>	<b>14 minutes and 21 MPH</b>
<b>Stations</b>	<b>1-Canoga (Add new platforms at existing station)</b> <b>2.Sherman Way (New)</b> <b>3-Roscoe Blvd (New)</b> <b>4-Nordhoff St (New)</b> <b>5-Chatsworth Metrolink Station (Add new platforms &amp; turnaround)</b>
<b>Park and Ride</b>	<b>Canoga - 257 spaces; Sherman Way - 207 spaces and Chatsworth - 610 spaces</b>
<b>Terminate Leases on Metro ROW</b>	<b>85 (60 Businesses and 25 Billboards)</b>
<b>Three Bridges</b>	<b>Lassen/RR Overcrossing, LA River, and Santa Susana Wash</b>
<b>Drainage</b>	<b>Bio-retention and Swales</b>
<b>Landscaping</b>	<b>Comparable to Metro Orange Line</b>
<b>Bikeway/Pedestrian Path</b>	<b>Comparable to Metro Orange Line</b>

# Ridership

- **August 2007 - Metro Orange Line averaged 25,000 boardings a day**
- **By 2030 model indicates 45,500 average weekday boardings for the Metro Orange Line: North Hollywood to Chatsworth & Warner Center**
- **Projected 9,000 “new transit riders” by 2030**

# Metro Orange Line Extension

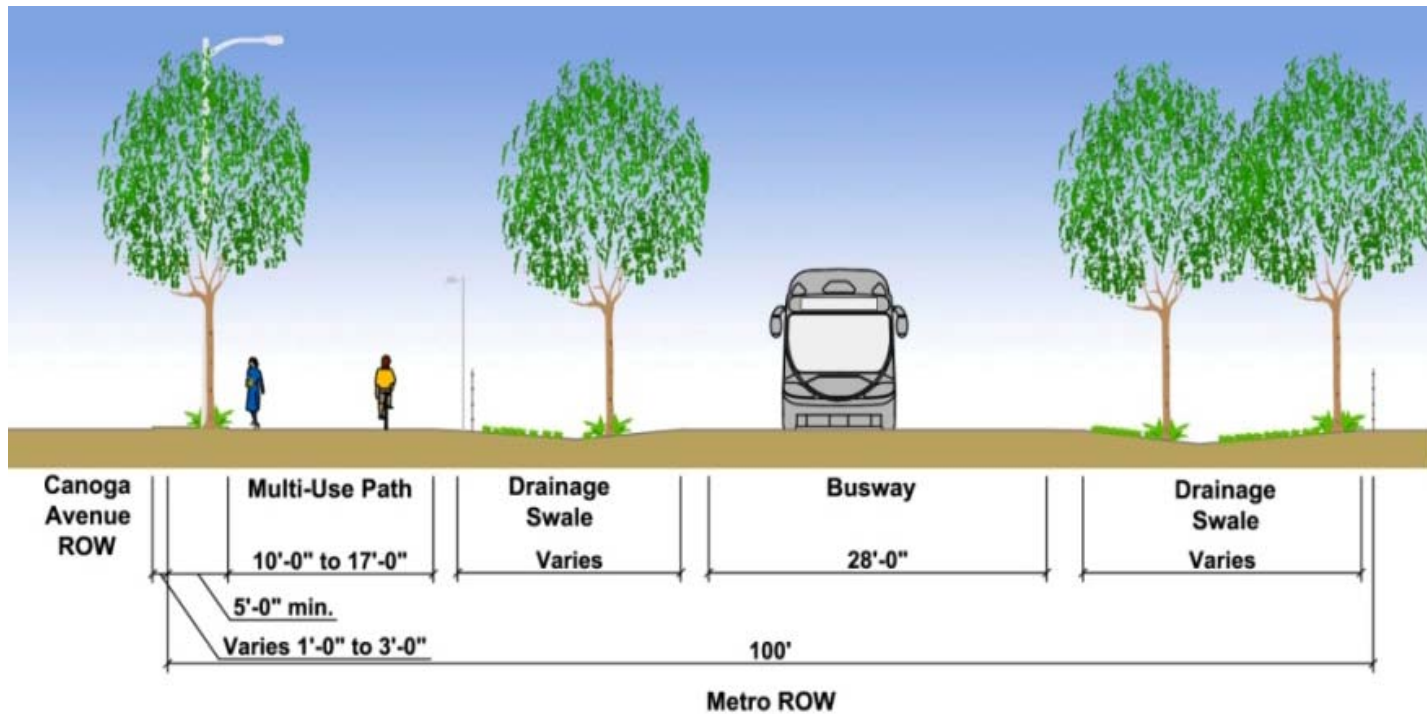
Duplicating features  
of operating  
Metro Orange Line



# Typical Cross Section

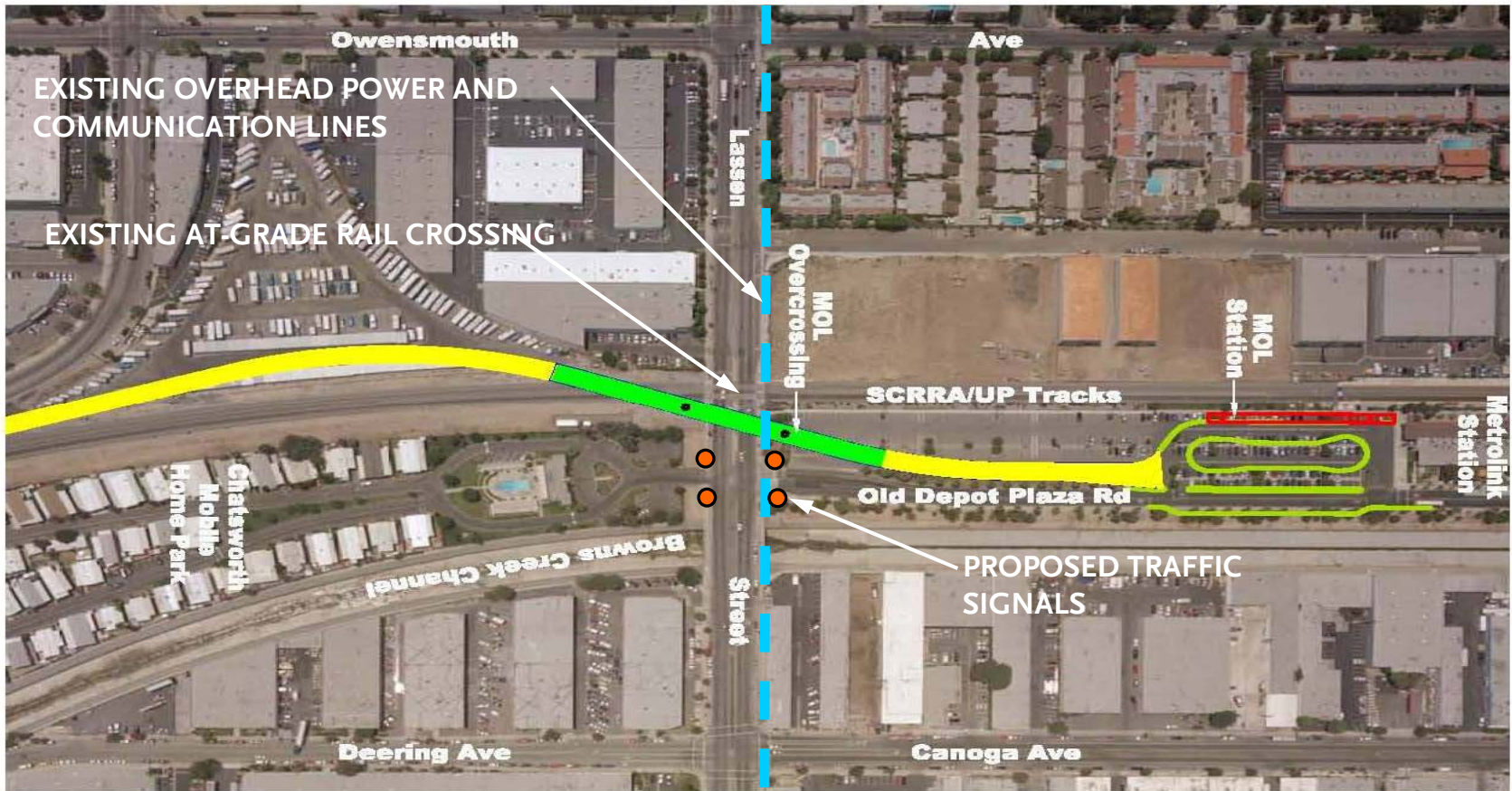
## Exclusive Busway

- Separation from Automobile Traffic
- Includes a Bikeway/Pedestrian Path
- Includes Landscaping & Irrigation



# Metro Orange Line Extension

## Relocate Power and Communication Lines on Lassen Street



Metro

-  = Three-Span Bridge
-  = Bridge Approaches

Lassen Street/Railroad Overcrossing  
Location (Schedule Critical Path)

# Project Characteristics

- **Exclusive Busway adjacent to Canoga Avenue on the Metro owned Right-of-Way**
- **Four new Metro Orange Line Stations**
- **Grade-Separations over:**
  1. **Los Angeles River**
  2. **Active Railroad Tracks/Lassen Street**

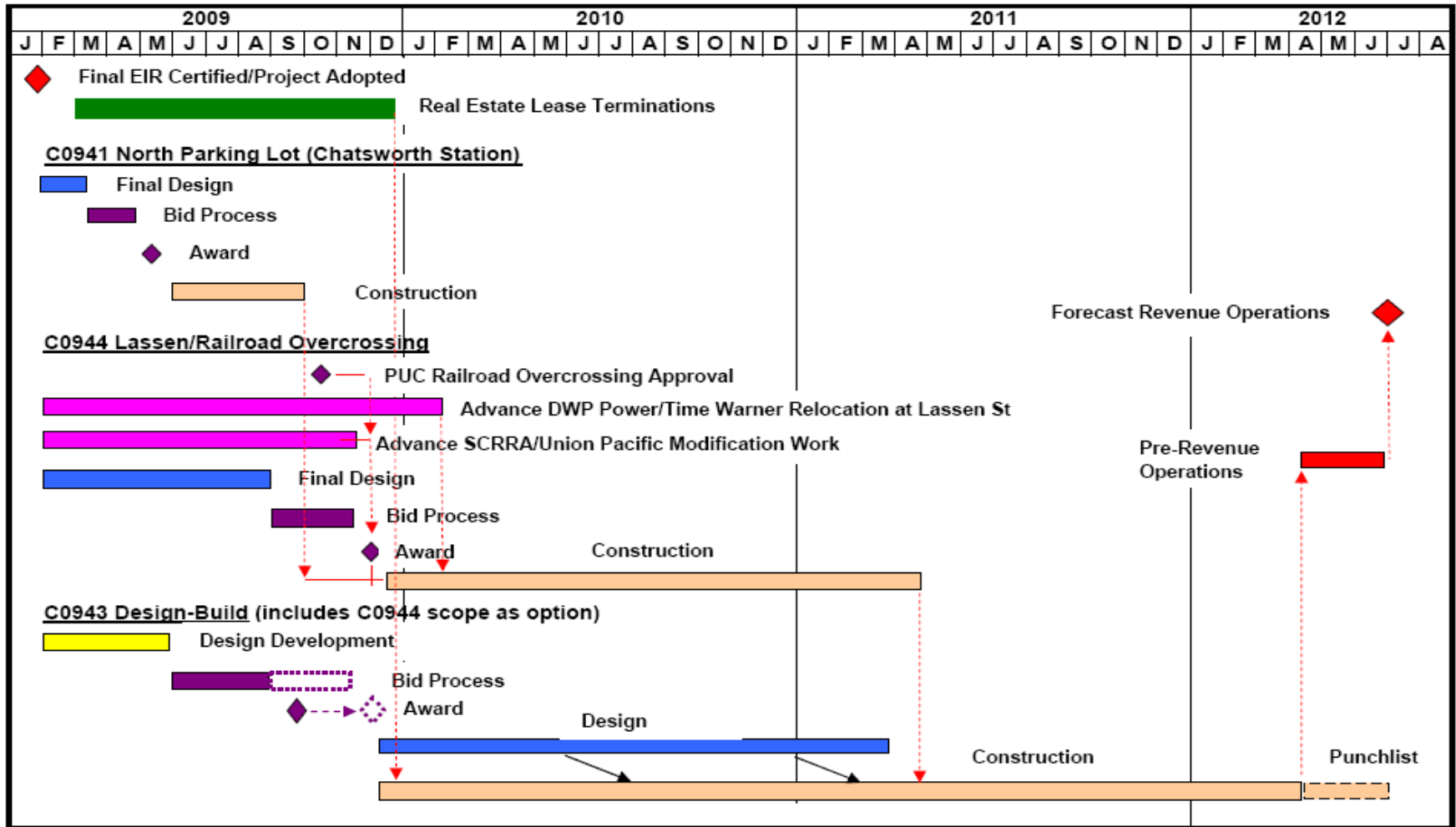


- **Transportation Enhancements and a Bikeway similar to those on the existing Metro Orange Line**

# Metro Orange Line Extension

- **In January 2009, Metro Board –**
  - **Certified Final Environmental Impact Report**
  - **Established Life of Project Budget of \$215.6 million and directed acceleration of revenue opening to Summer 2012**
  - **Approved Contract Modification to Preliminary Engineering Consultant for Design Development, selected Final Design, and Engineering Services During Construction to support acceleration of Project**
- **In February 2009, Metro Board –**
  - **Awarded contract for Construction Management Support**

# Metro Orange Line Extension



# Metro Orange Line Extension

- Completed North Parking Lot construction in October.
- Design-Build Work:
  - Opened Bids on October 15, 2009.
  - Contract Award planned in December 2009.
  - Design-Builder mobilizes, and commences final design and some construction work in first quarter 2010.
- Community Outreach
- Continued real estate actions to terminate leases and acquire easements. Complete in Feb. 2010.

# Metro Orange Line Extension

## – SCRRRA Work:

- Finalize agreement in October 2009.
- SCRRRA to substantially complete at-grade rail crossing enhancements on Lassen Street, track work and rail signal modifications in first quarter 2010.

## – Other Major Third Party Work:

- Finalize agreement with Union Pacific Railroad (UP).
- LADWP work on Lassen Street.

# Metro Orange Line Extension



Metro

**Complete construction of North Parking Lot at  
Chatsworth Station**

# Metro Orange Line Extension

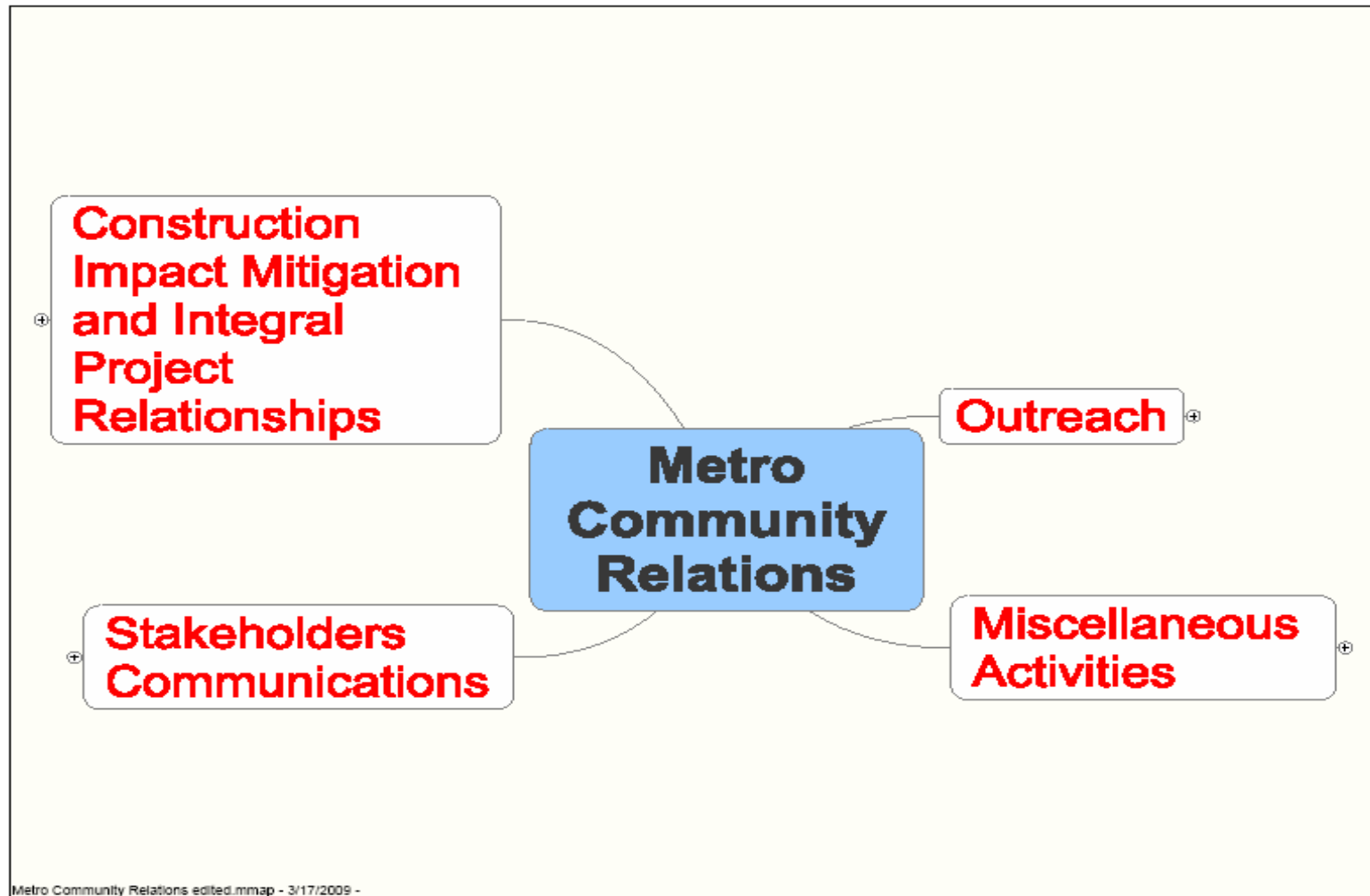
## Community Relations

# Metro Orange Line Extension

## Construction Impact Mitigation Programs

- Liaison with elected officials, community stakeholders, media, project management and the contractor.
- Implementation of a highly effective program that fosters good will and minimizes impacts to the public by working closely with the contractor and the community.
- Fulfillment of the legal environmental requirements, while maintaining stakeholders informed and providing public outreach on major construction activities.

# Metro Orange Line Extension



# Metro Orange Line Extension

**For more information or to reach Community Relations, please call 213.922.3668 or email [MOLExtension@metro.net](mailto:MOLExtension@metro.net)**

**End of Presentation**