

Metro Harbor Subdivision Transit Corridor Alternatives Analysis (AA) Study

**Early Scoping Meetings
September 2008**



Metro

Agenda

- **Meeting Objectives**
- **Project Introduction**
- **Purpose & Need**
- **Alternatives**
- **Evaluation Criteria**
- **Public / Stakeholder Outreach**
- **Questions / Comments**

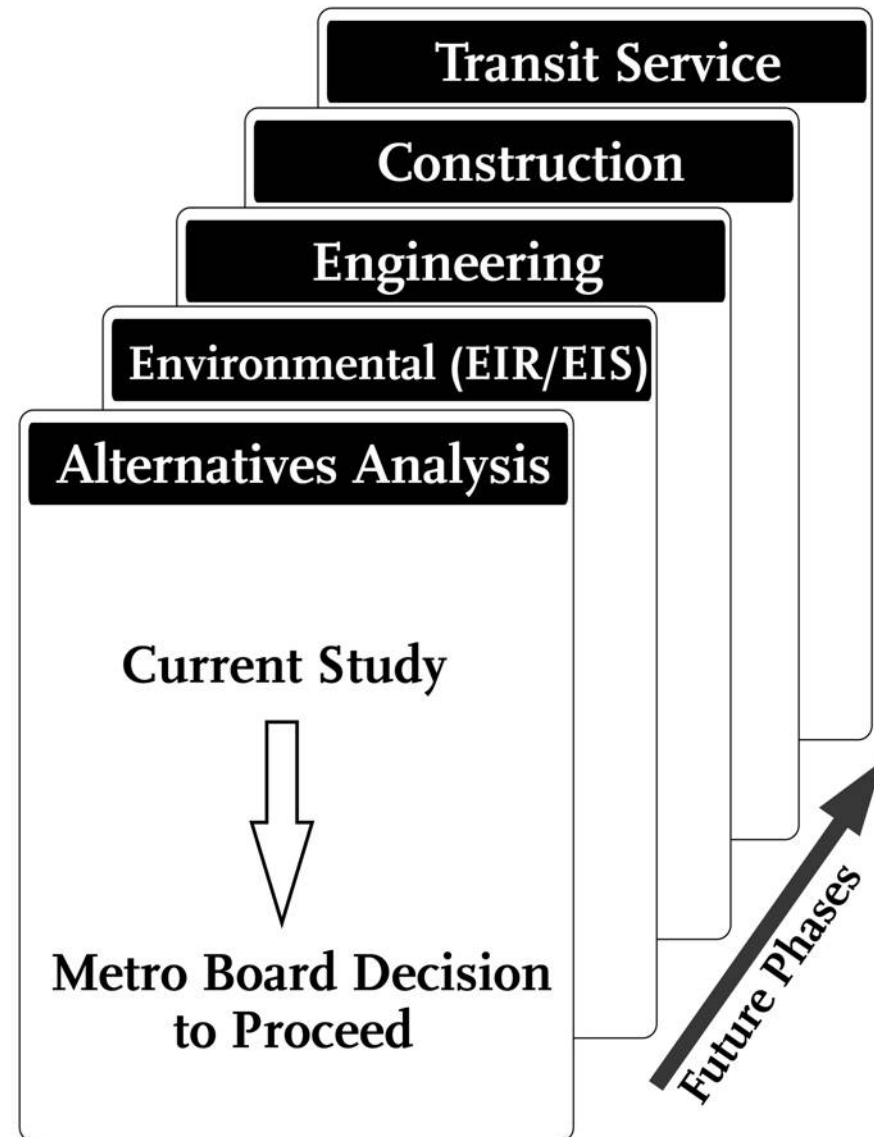
Meeting Objectives

- **Solicit comments from public and stakeholders concerning:**
 - Purpose & Need for the project
 - Alternatives to be considered
 - Potential environmental issues along corridor
 - Evaluation Criteria to be used for AA Study

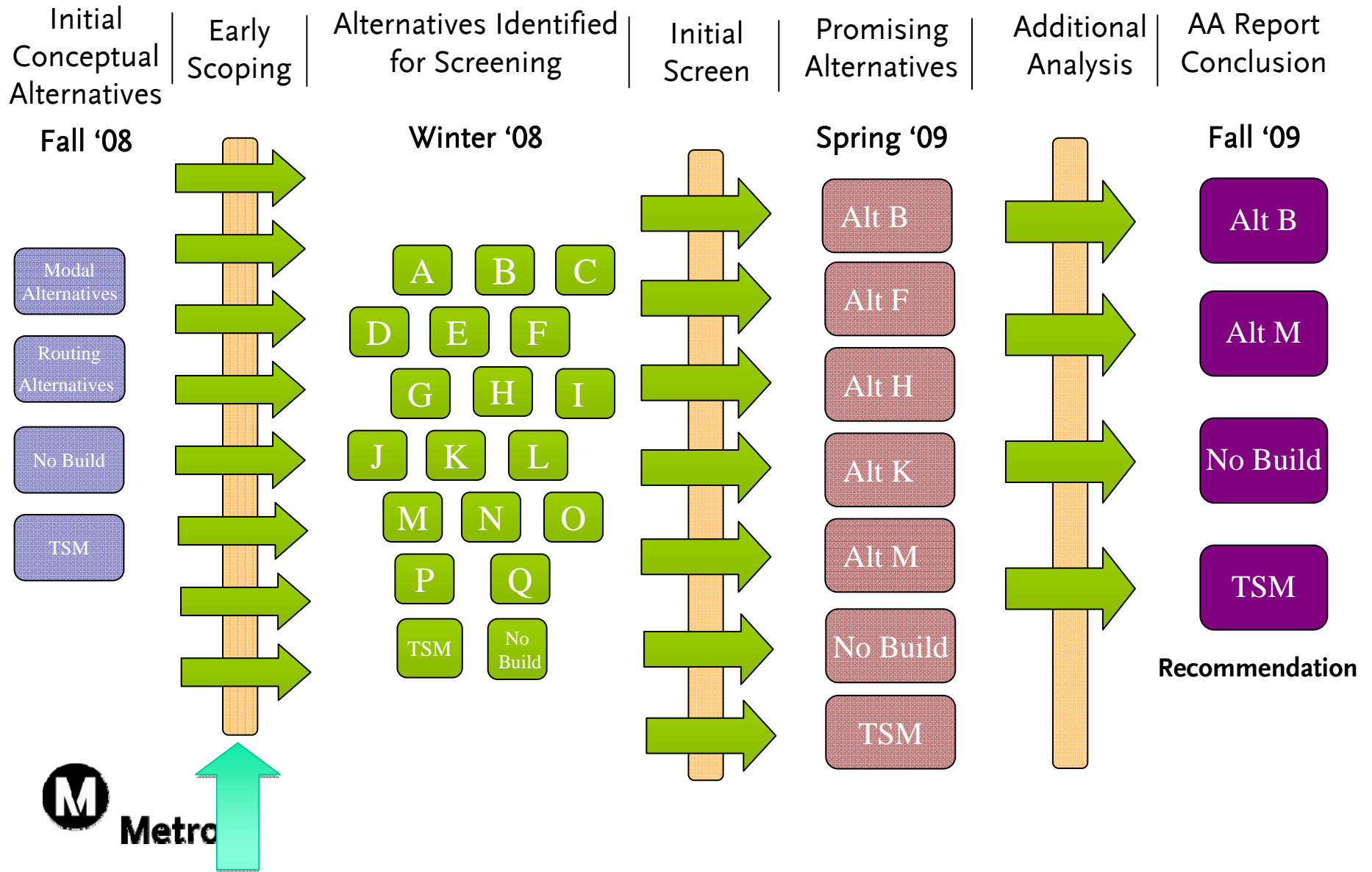
Alternatives Analysis Process

First step in defining a project

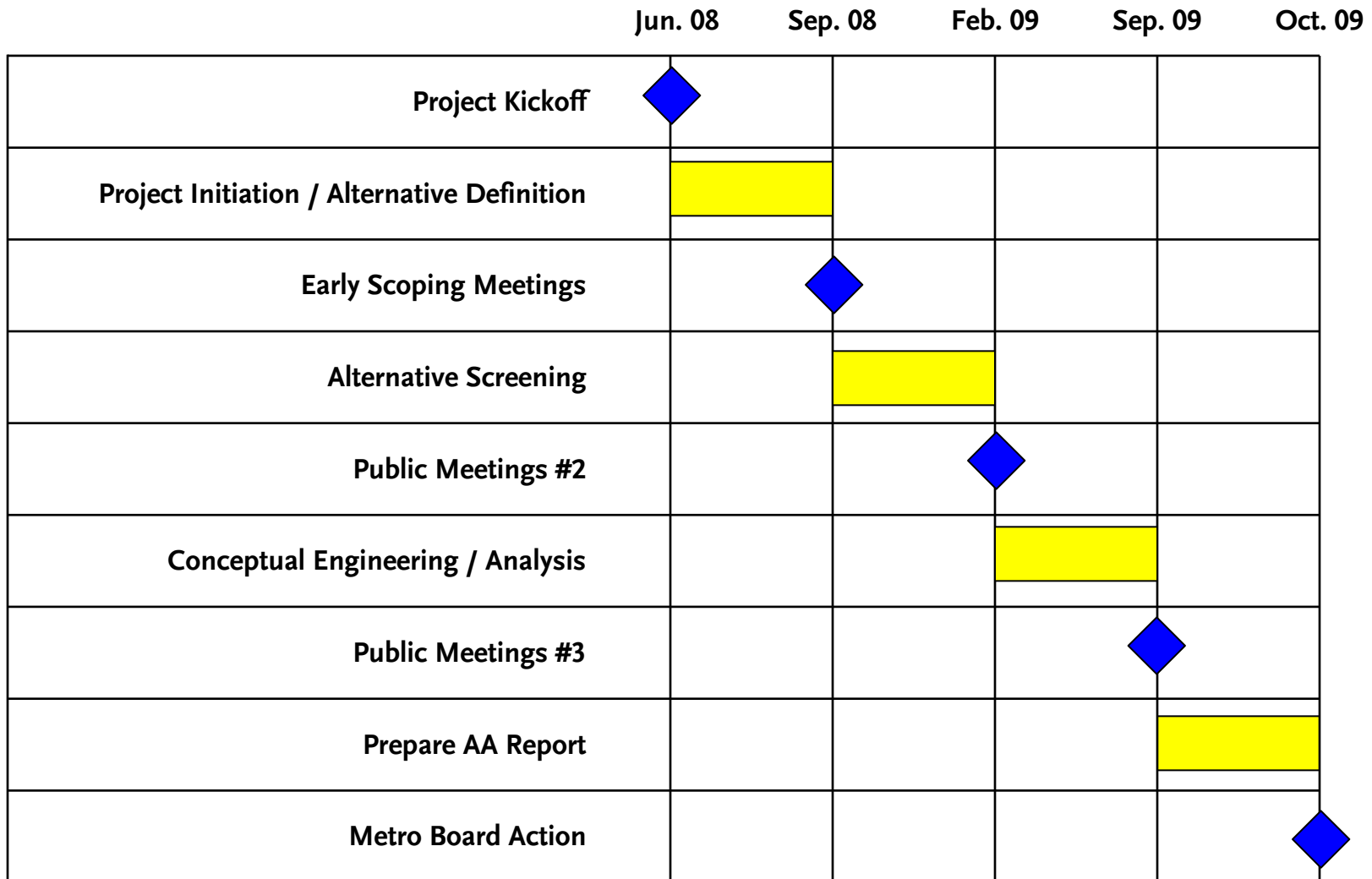
- Evaluation of a wide range of alternatives
- Screening of alternatives against criteria
- Selection of most promising alternative(s) to proceed into further environmental review



Where We Are In The Process



Tentative Project Schedule



Project Study Area

- Harbor Subdivision purchased by Metro in early 1990's
- Traverses 12 jurisdictions
- Extends from south of downtown Los Angeles to north of the Port of Los Angeles
- Approx. 26 miles long (approx. 85 sq. miles)
- BNSF operates freight service along corridor

Harbor Subdivision Transit Corridor Study Area



Draft Purpose & Need

- **Improve mobility in southwestern Los Angeles County by introducing high-frequency transit service options**
- **Enhance the regional transit network by interconnecting existing and planned rapid transit lines**
- **Provide an alternative mode of transportation for commuters who currently use the congested I-405 and I-110 corridors**
- **Improve transit accessibility for residents of the communities along the corridor**
- **Encourage a mode shift to transit, reducing air pollution and greenhouse gas emissions**



Metro

Modal Alternatives to be Studied

- **No Build**
- **Transportation Systems Management (TSM)**
- **Bus Rapid Transit (BRT)**
- **Rail Technologies:**
 - **Light Rail Transit (LRT)**
 - **Self-propelled Railcars**
 - **Commuter Rail (Metrolink)**
- **Other**



Metrolink

Routing Alternatives to be Studied

- Northern Terminus Options (Los Angeles Union Station, 7th / Metro, etc)
- Southern Terminus Options (Metro Blue Line, Harbor Transitway, Downtown Torrance, San Pedro, etc)
- Phased Segment Options



Harbor Subdivision Transit Corridor Study Area



Proposed Evaluation Criteria

- **Costs (Capital, Operating & Maintenance)**
- **Ridership & User Benefits**
- **Cost-Effectiveness**
- **Travel Time, Reliability & Connectivity**
- **Transit Supportive Land Use**
- **Transportation System Benefits/Impacts**
- **Environmental Benefits/Impacts**
- **Environmental Sustainability**
- **Equity**
- **Financial Feasibility**
- **Safety & Security**
- **Compatibility with Other Modes on the Corridor**

Public Outreach Meetings

- **Early Scoping Meetings**
 - September 23, 2008 – Torrance (6:30-8:30 pm)
 - September 24, 2008 – Wilmington (6:30-8:30 pm)
 - September 25, 2008 – Huntington Park (6-8 pm)
 - September 30, 2008 – El Segundo (6-8 pm)
- **Public Meetings – Round 2**
 - Late February 2009
- **Public Meetings – Round 3**
 - Mid September 2009



Metro

Opportunities to Provide Input

Please submit comments by October 22, 2008

- **Complete Comment Card**
- **By Mail:**
Kathleen McCune, Project Manager
One Gateway Plaza – MS 99-22-3
Los Angeles, CA 90012
- **By Phone:**
(213) 922-4004
- **Email:**
harborsubdivision@metro.net
- **On the web at:**
www.metro.net/harborsubdivision
(Click on “Contact Us”)



Metro

Discussion

- **Comments & Questions**