

Metro ExpressLanes Update

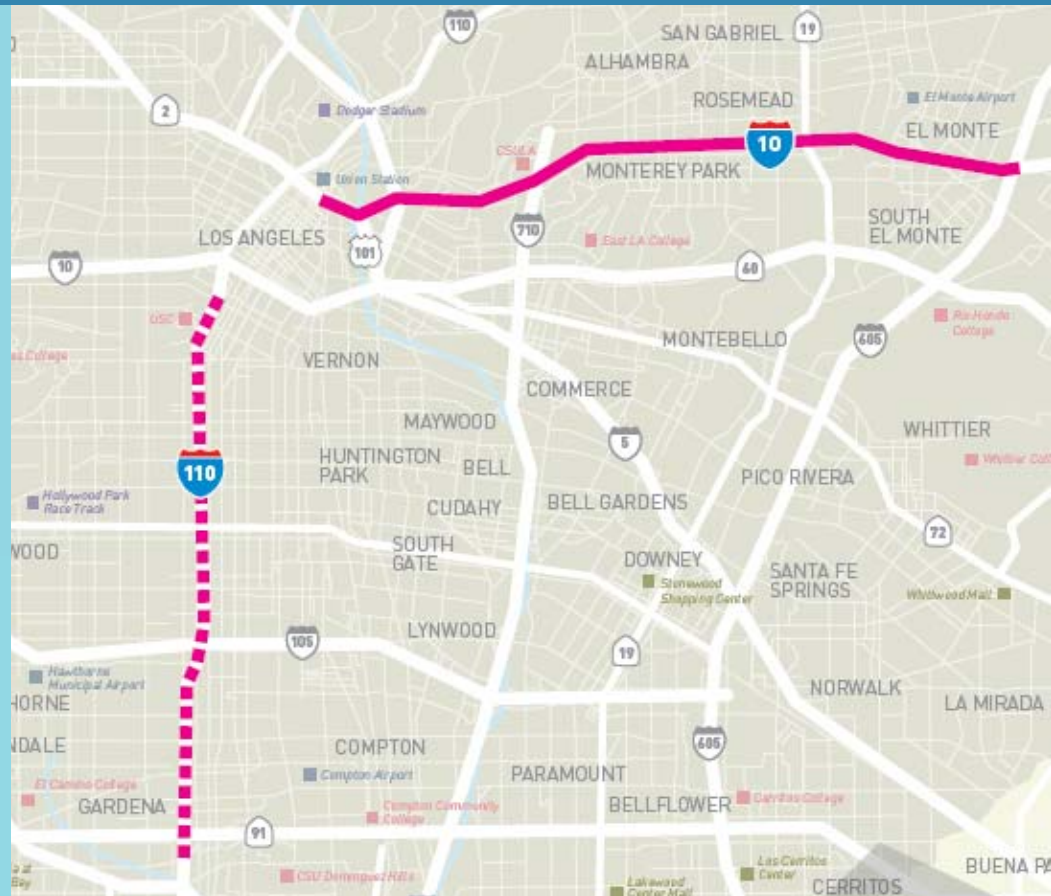
I-10 Corridor Advisory Group, June 6, 2011



Metro

Program Overview

- > Conversion of HOV lanes to HOT lanes on I-10 and I-110
- > Multi-modal Integrated Corridor Emphasis
- > 1 of 6 Nationwide Federal Demonstration Projects for Congestion Pricing
- > Goal: Move More People, Not More Vehicles



Metro

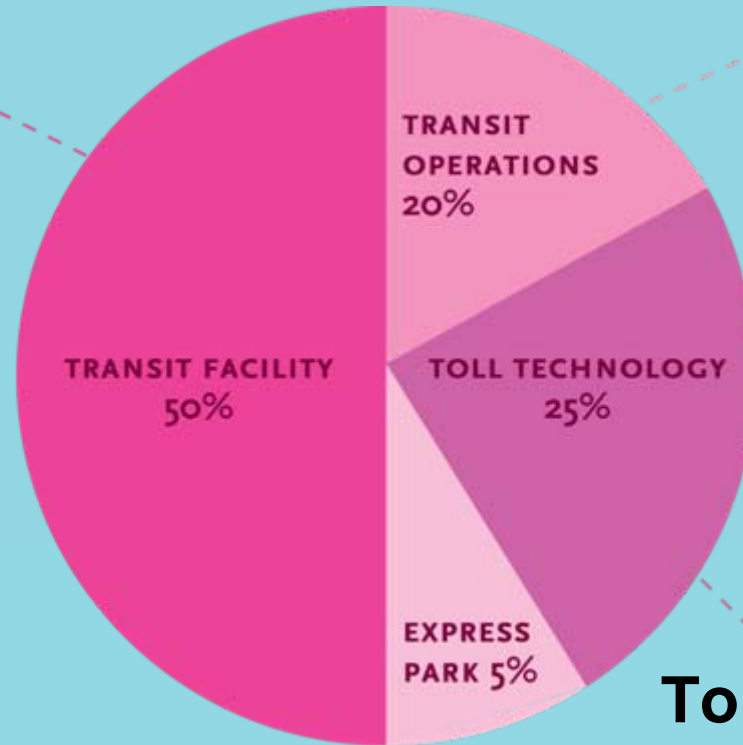
Federal Grant - \$210 Million

Transit Facility

Park & Ride Lot Improvements, Station Expansion, Maintenance Facility

Transit Operations

New Buses, Dual Hub BRT, Vanpools



Express Park

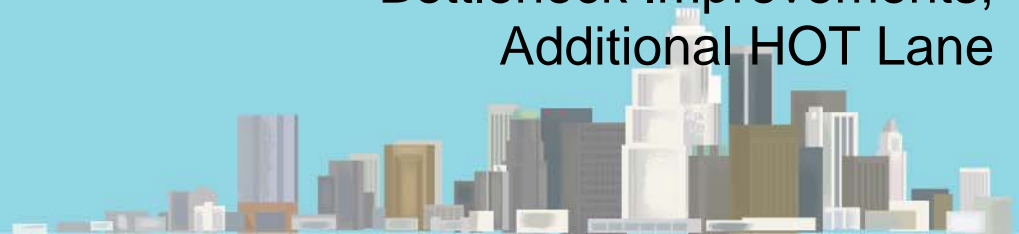
Parking Management

Toll Technology & Infrastructure

Bottleneck Improvements, Additional HOT Lane

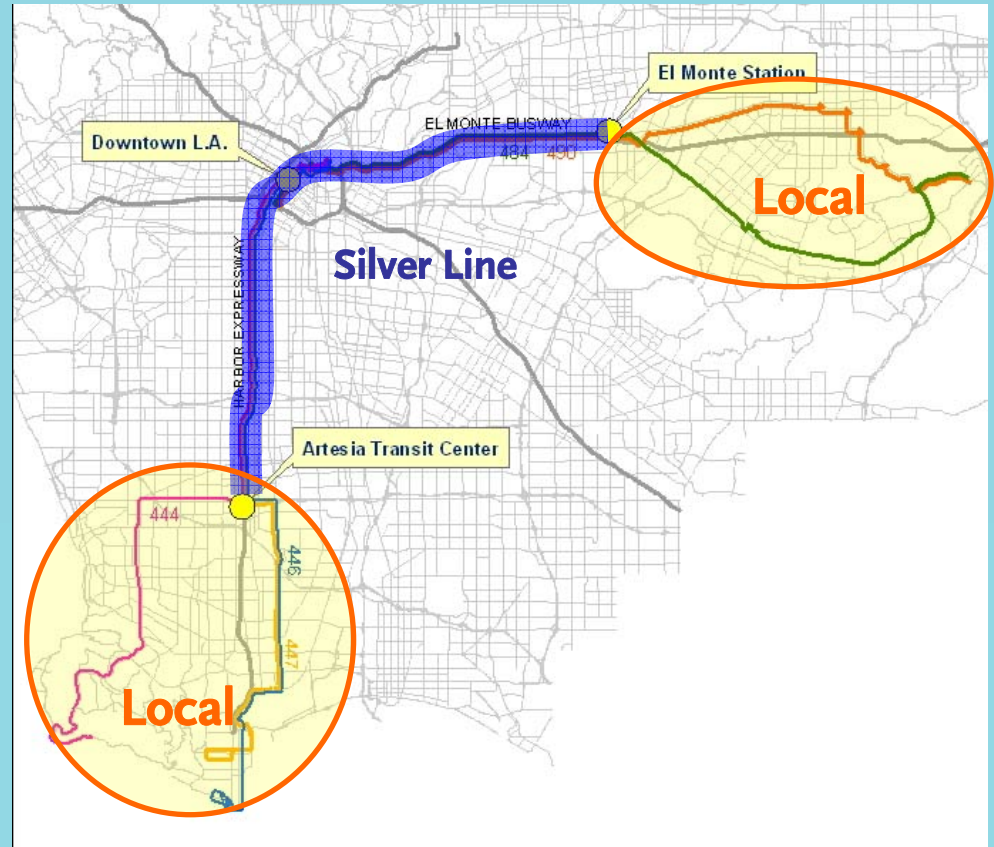


Metro

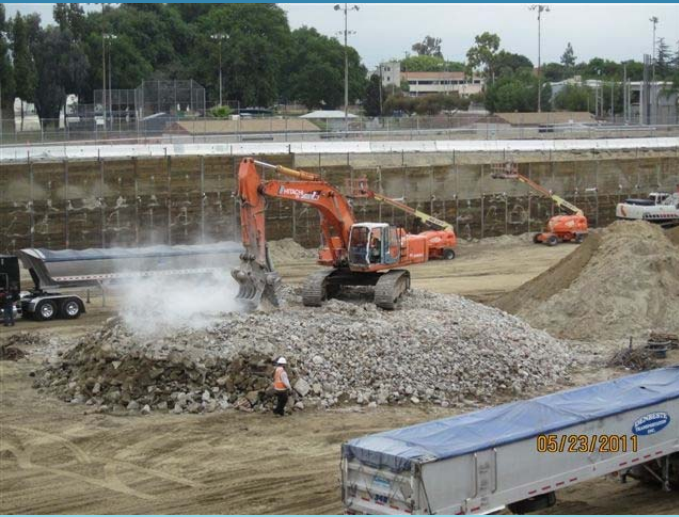


Silver Line BRT

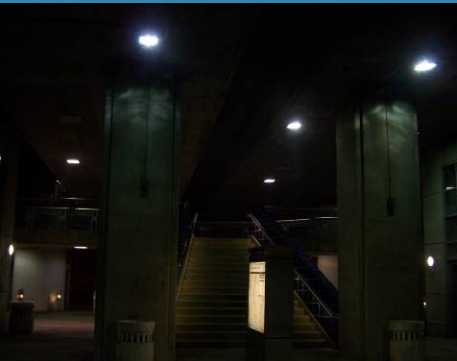
- Improved Transit Facilities
 - El Monte Station
 - Patsaouras Plaza
 - Harbor Transitway
- Improves On-Time Performance
 - 59 New Clean Fuel Buses
- Service Enhancements
 - M-F: **Every 10 min during peak**
 - **Expanded Weekend Service**
 - **ExpressLanes Rewards Program**



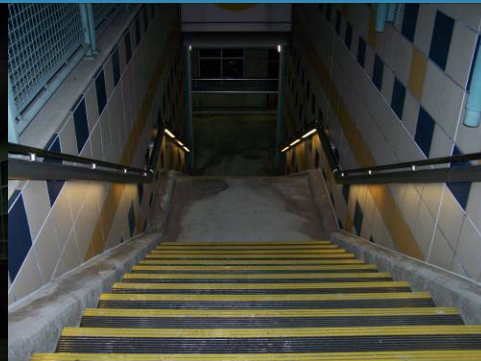
El Monte Station Construction



Harbor Transitway Lighting Improvements



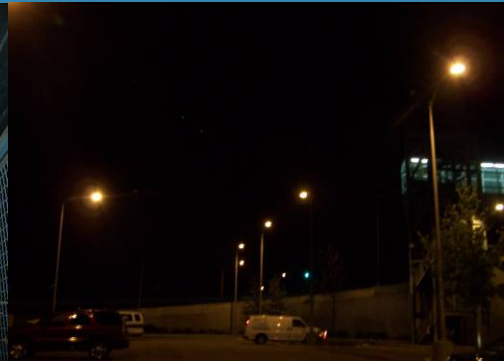
37th St. Station: Before



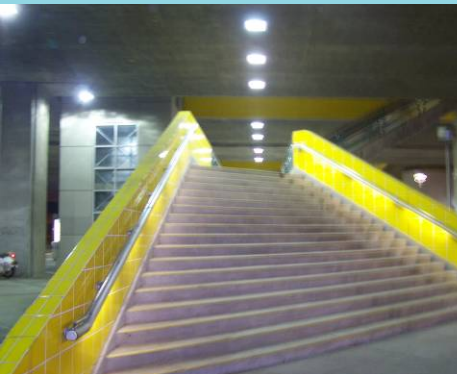
Manchester Station: Before



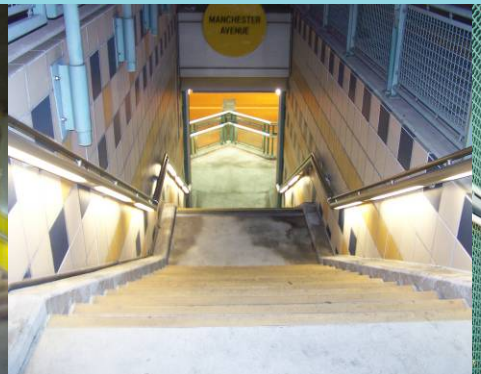
Slauson Station: Before



Park & Ride: Before



37th St. Station: After



Manchester Station: After



Slauson Station: After



Park & Ride: After



37th St Station Sound Enclosure (Pilot)



Metro®

RENDERING
MARIO MENDOZA

VIEW FROM PASSENGER SIDE OF BUS STATION WITH NOISE BARRIER

Concept of Operations

ExpressLanes Demonstration

Business Rule

I-110 Harbor Transitway
Lanes Only

SOV Pay
HOV 2+ Free

I-10 El Monte Busway Lanes
Only

SOV Pay
HOV-2 Pay: Peak Hours
(5am–9am; 4pm–7pm)
HOV-2 Free: Off-Peak Hours
HOV 3+ Free All Hours

All electronic “open road” tolling

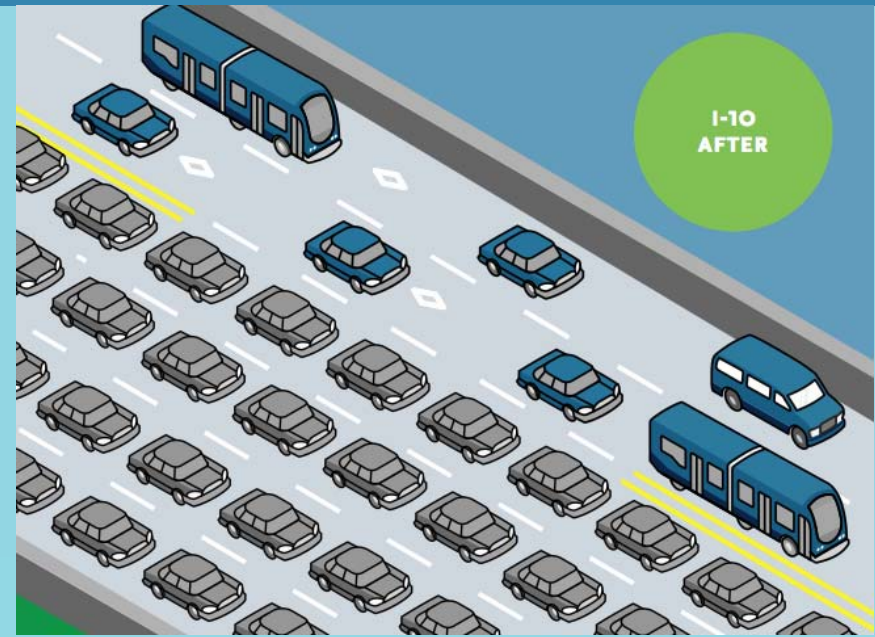
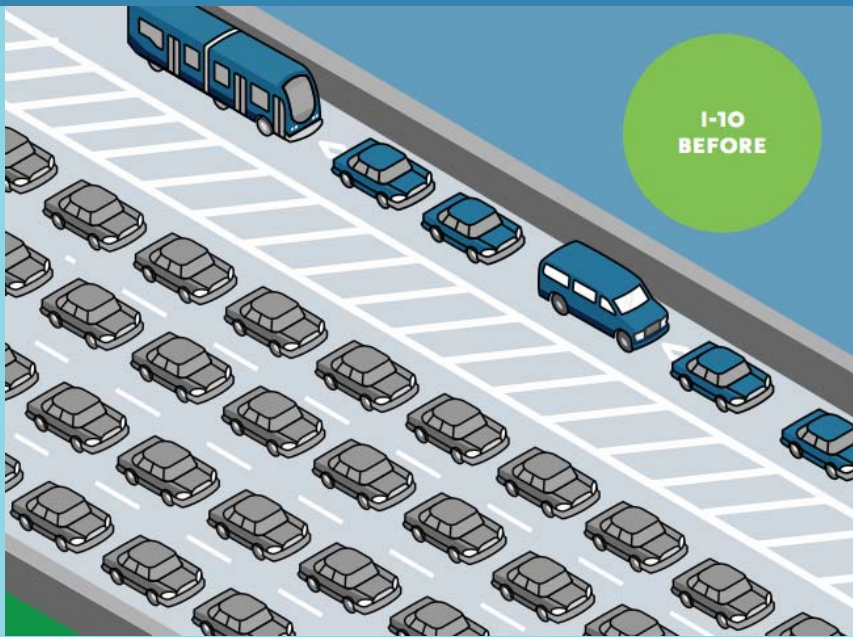
- Dynamic, segmented pricing assembled by trip
- Dedicated Enforcement CHP Officers
- Dedicated Incident Response Tow Trucks



Metro Access Points Same as Current HOV access



Planned Improvements – I-10

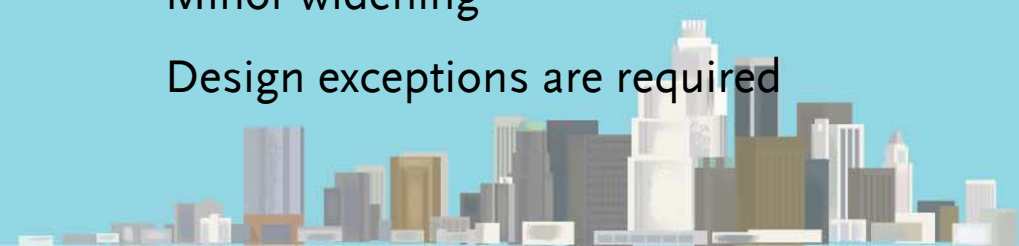


Majority of westbound HOV traffic exits at I-710

Add one additional HOT lane in each direction between I-710 and I-605

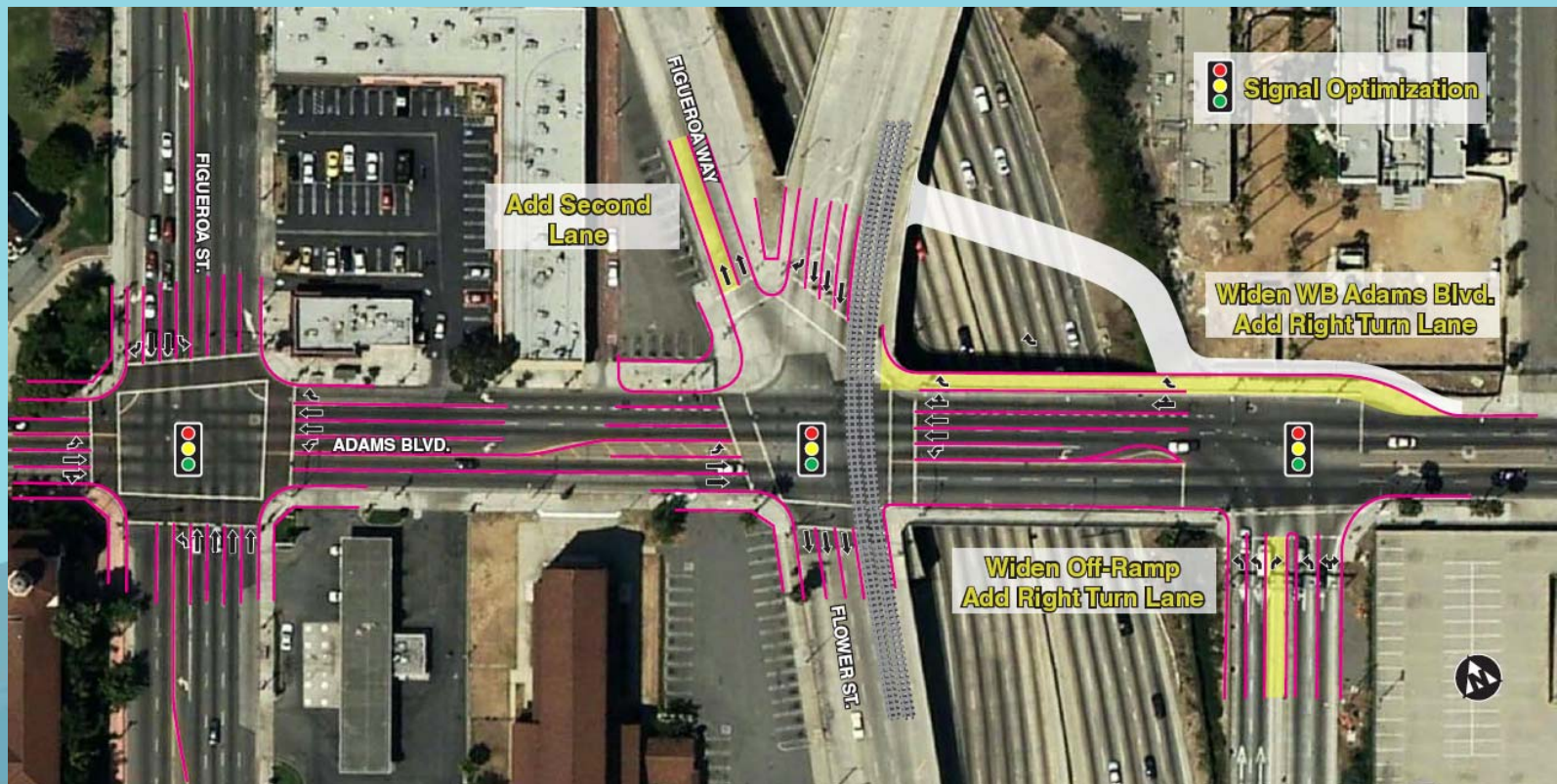
Minor widening

Design exceptions are required



Planned Improvements – I-110

- > Widen Adams Blvd to add right-turn lane
- > Sidewalk re-located to create pedestrian plaza



Toll Rates

- > Minimum Toll per Mile: \$0.25
- > Maximum Toll per Mile: \$1.40
- Avg Peak Toll (End to End) – I-110 is \$4



EXPRESS LANES	
W 39th St	\$ 3.00
W Adams Blvd	\$ 4.00
HOV 2+ NO TOLL	

- > Toll Rates will vary within the range based upon demand.
- > **The Toll Rate is based on traffic levels in the ExpressLanes to ensure 45 mph.**
- > **Maximum toll represents a Price to Discourage More Entry rather than generate more revenue**

Balanced Approach to Equity

- > State Law Requires Assessment of Impact to Low Income Commuters – 1st in the State
- > Low Income Commuter Assessment (LICA) Peer Review by USC, UCLA, and EDF; Draft Reviewed by Corridor Advisory Groups
- > LICA Approved by Metro Board March 2010
- > ExpressLanes Toll Credit Program: \$25 Toll Credit (one-time), \$3 monthly account maintenance fee waived (on-going) – 1st in the State
- > Significant Transit Investment (before revenue operations and after)
- > Net Toll Revenues reinvested in transit & carpool lane improvements in the corridor where generated



Metro



Project Schedule

Description	2009	2010	2011	2012	2013
Toll Policy	●				
Low Income Commuter Assessment		●			
Environmental Documents Approved		●			
Preliminary Engineering		●			
Privacy Policy		●			
Award Design-Build-Operate-Maintain Contract		●			
TO BE COMPLETED					
Launch Marketing Campaign			●		
Begin Construction			●		
ExpressLanes Open to Traffic				●	

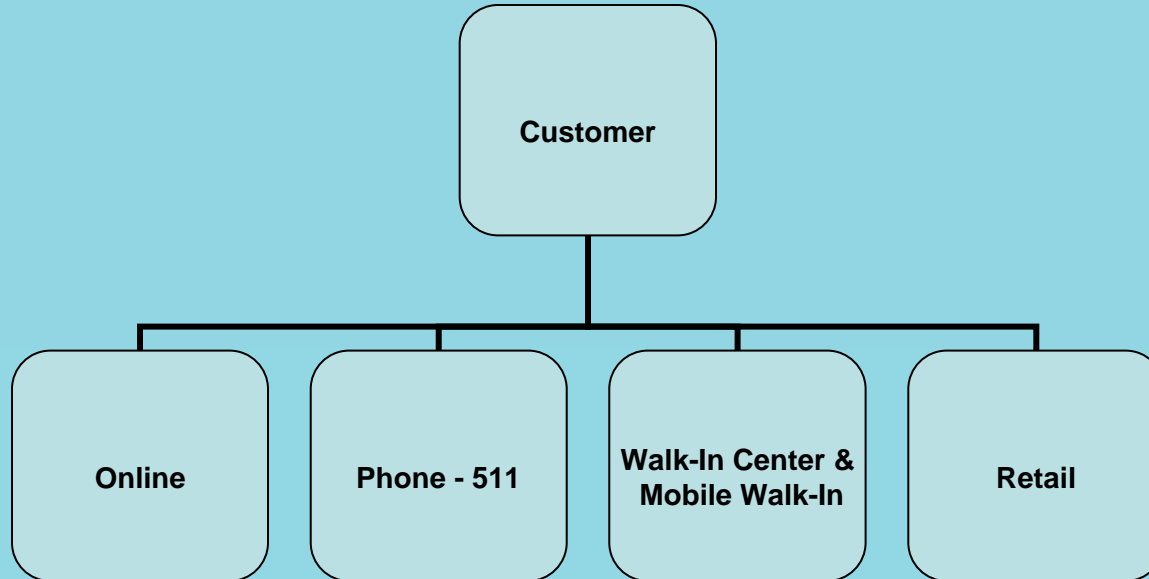


Customer Toolkit



Transponder Interest Form

> www.metro.net/expresslanes



CAG Engagement: Save-the-Date

- > Corridor Advisory Group Meetings (June 6-9, 2011)
- > Silver Line Enhanced Service on I-110 Harbor Transitway (June 26, 2011)
- > Metro ExpressLanes Groundbreaking (July 6, 2011)
- > Metro ExpressLanes “How It Works” Video Taping (July – Sept 2011)



Metro ExpressLanes Update

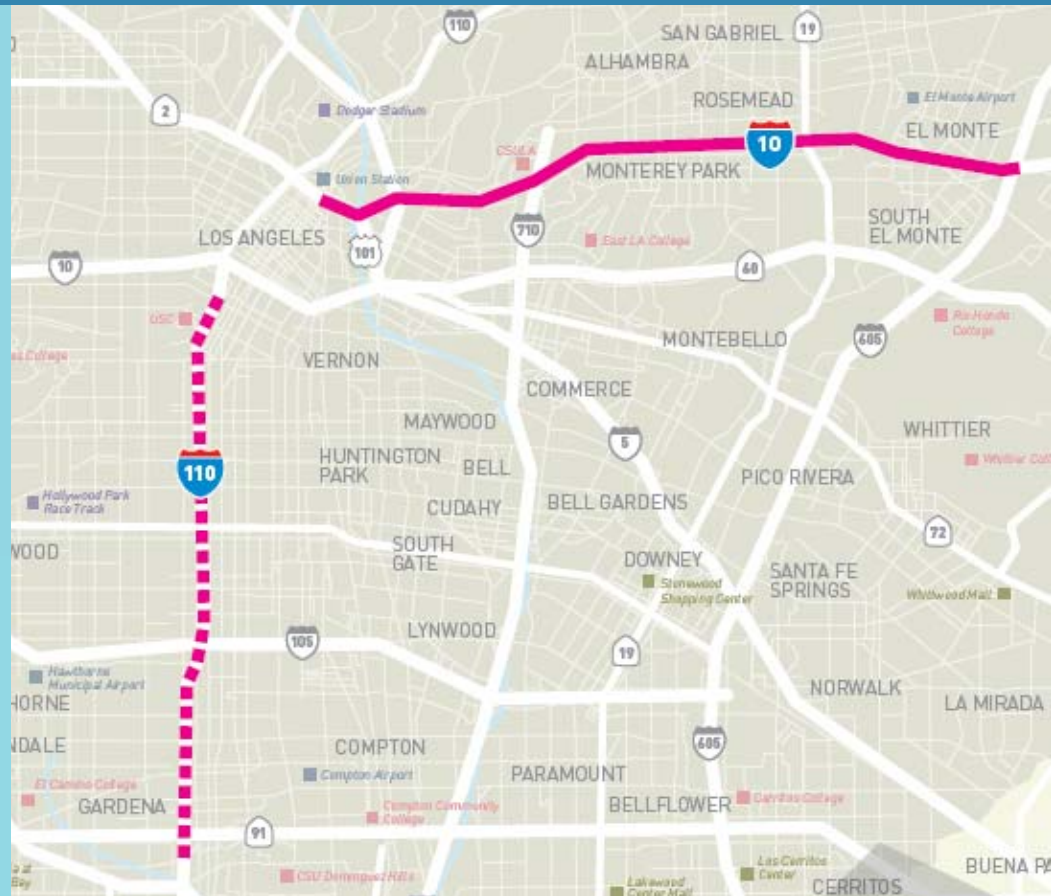
I-110 South and North Corridor Advisory Groups, June 8-9, 2011



Metro

Program Overview

- > Conversion of HOV lanes to HOT lanes on I-10 and I-110
- > Multi-modal Integrated Corridor Emphasis
- > 1 of 6 Nationwide Federal Demonstration Projects for Congestion Pricing
- > Goal: Move More People, Not More Vehicles



Metro

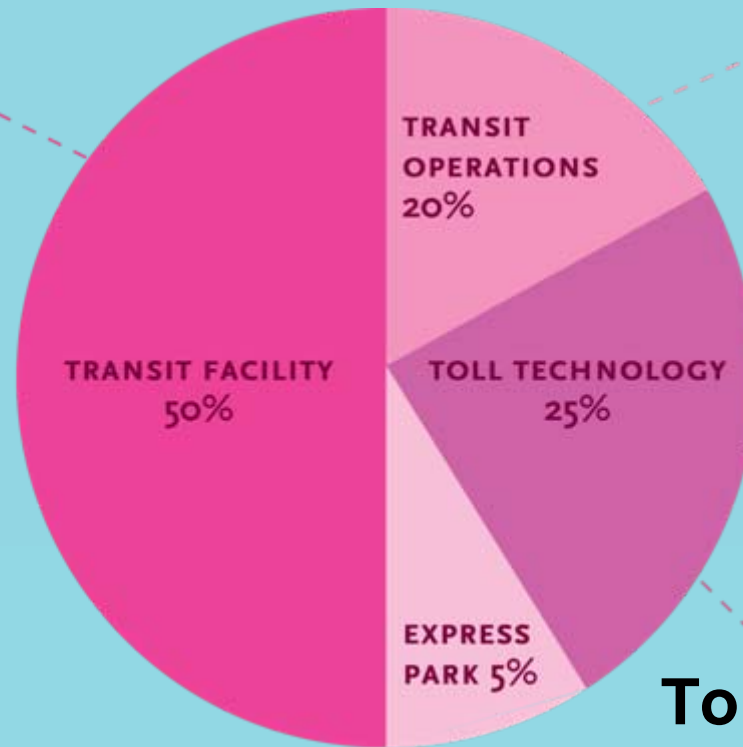
Federal Grant - \$210 Million

Transit Facility

Park & Ride Lot Improvements, Station Expansion, Maintenance Facility

Transit Operations

New Buses, Dual Hub BRT, Vanpools



Express Park

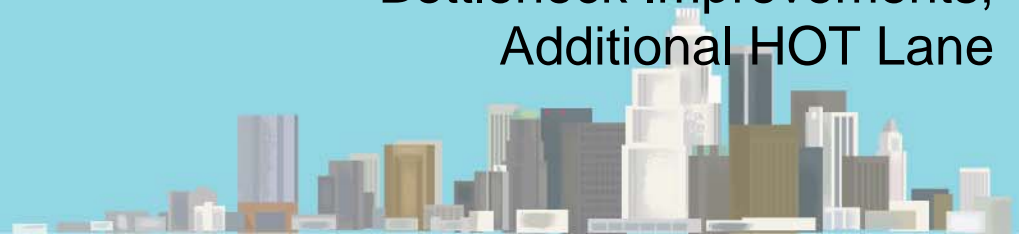
Parking Management

Toll Technology & Infrastructure

Bottleneck Improvements, Additional HOT Lane

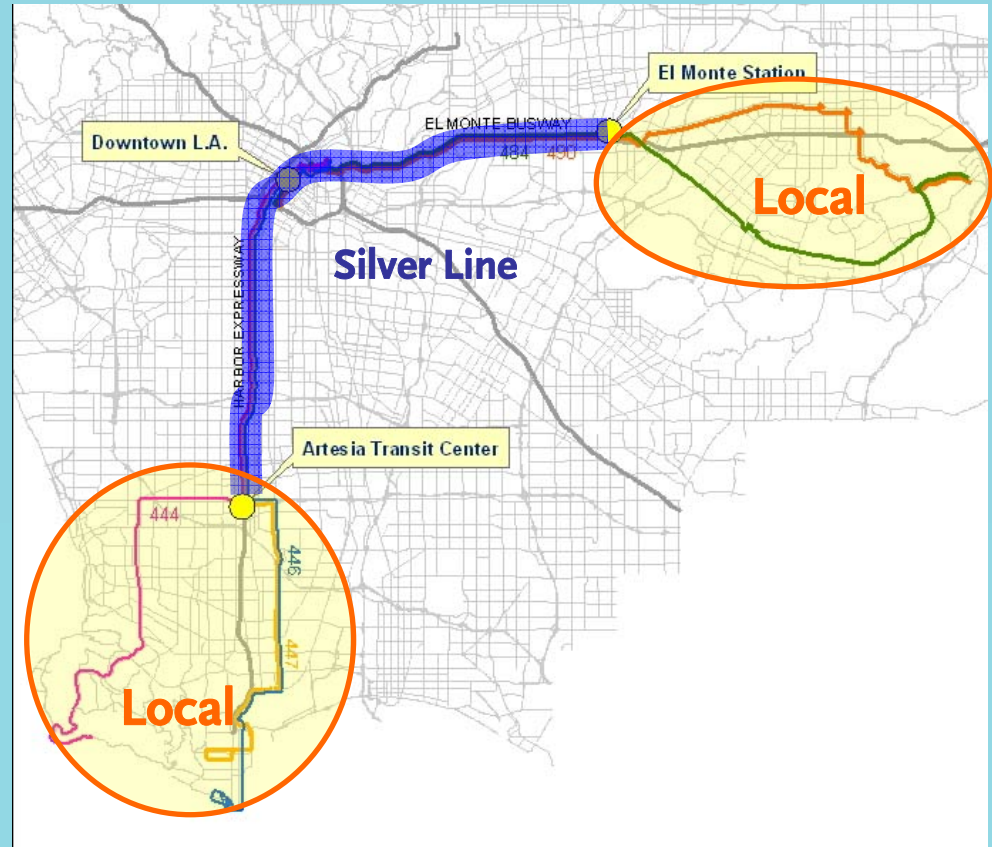


Metro



Silver Line BRT

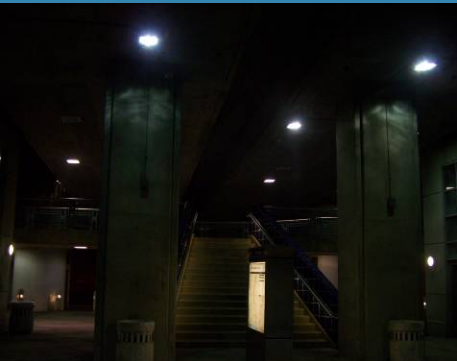
- Improved Transit Facilities
 - El Monte Station
 - Patsaouras Plaza
 - Harbor Transitway
- Improves On-Time Performance
 - 59 New Clean Fuel Buses
- Service Enhancements
 - M-F: **Every 10 min during peak**
 - **Expanded Weekend Service**
 - **ExpressLanes Rewards Program**



El Monte Station Construction



Harbor Transitway Lighting Improvements



37th St. Station: Before



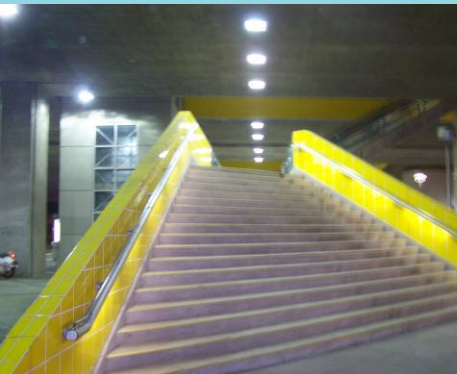
Manchester Station: Before



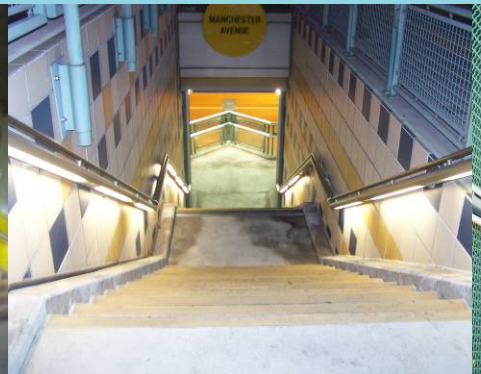
Slauson Station: Before



Park & Ride: Before



37th St. Station: After
 Metro



Manchester Station: After



Slauson Station: After



Park & Ride: After



Artesia Transit Center: Substation and CCTV



Artesia Transit Center : Substation



37th St Station Sound Enclosure (Pilot)



Metro®

RENDERING
MARIO MENDOZA

VIEW FROM PASSENGER SIDE OF BUS STATION WITH NOISE BARRIER

Concept of Operations

ExpressLanes Demonstration

Business Rule

I-110 Harbor Transitway
Lanes Only

SOV Pay
HOV 2+ Free

I-10 El Monte Busway Lanes
Only

SOV Pay
HOV-2 Pay: Peak Hours
(5am–9am; 4pm–7pm)
HOV-2 Free: Off-Peak Hours
HOV 3+ Free All Hours

All electronic “open road” tolling

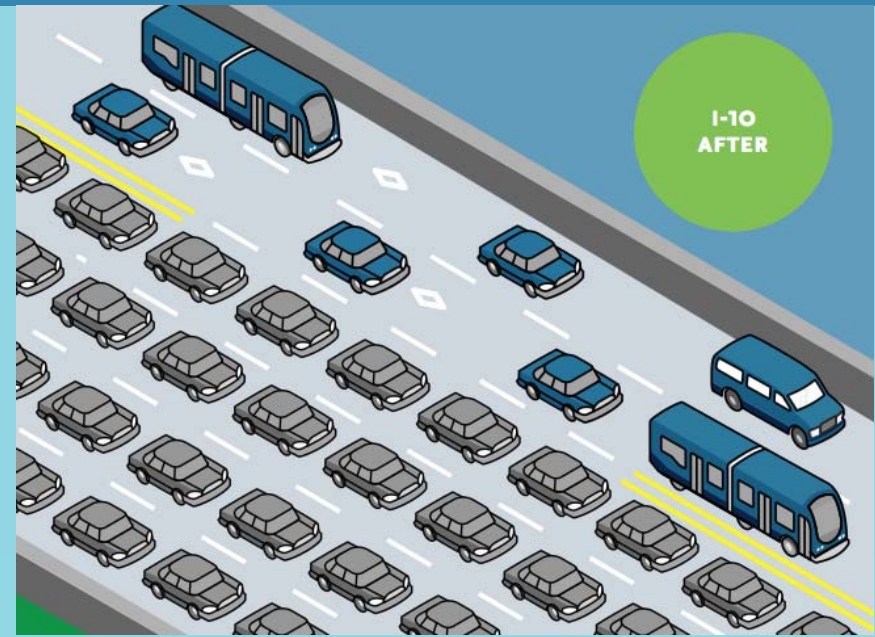
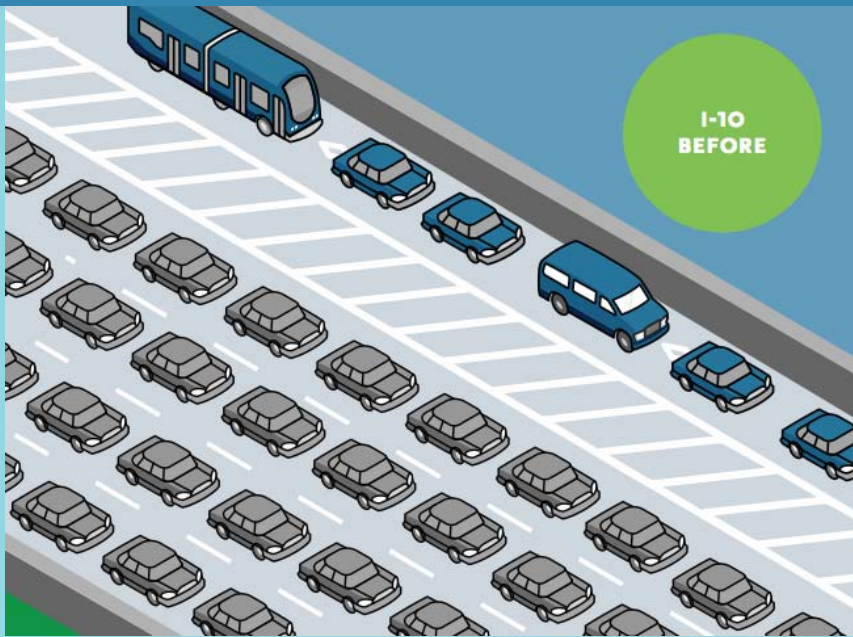
- Dynamic, segmented pricing assembled by trip
- Dedicated Enforcement CHP Officers
- Dedicated Incident Response Tow Trucks



Metro Access Points Same as Current HOV access



Planned Improvements – I-10

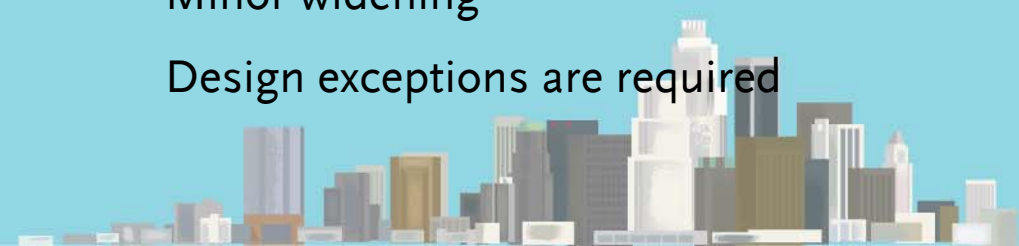


Majority of westbound HOV traffic exits at I-710

Add one additional HOT lane in each direction between I-710 and I-605

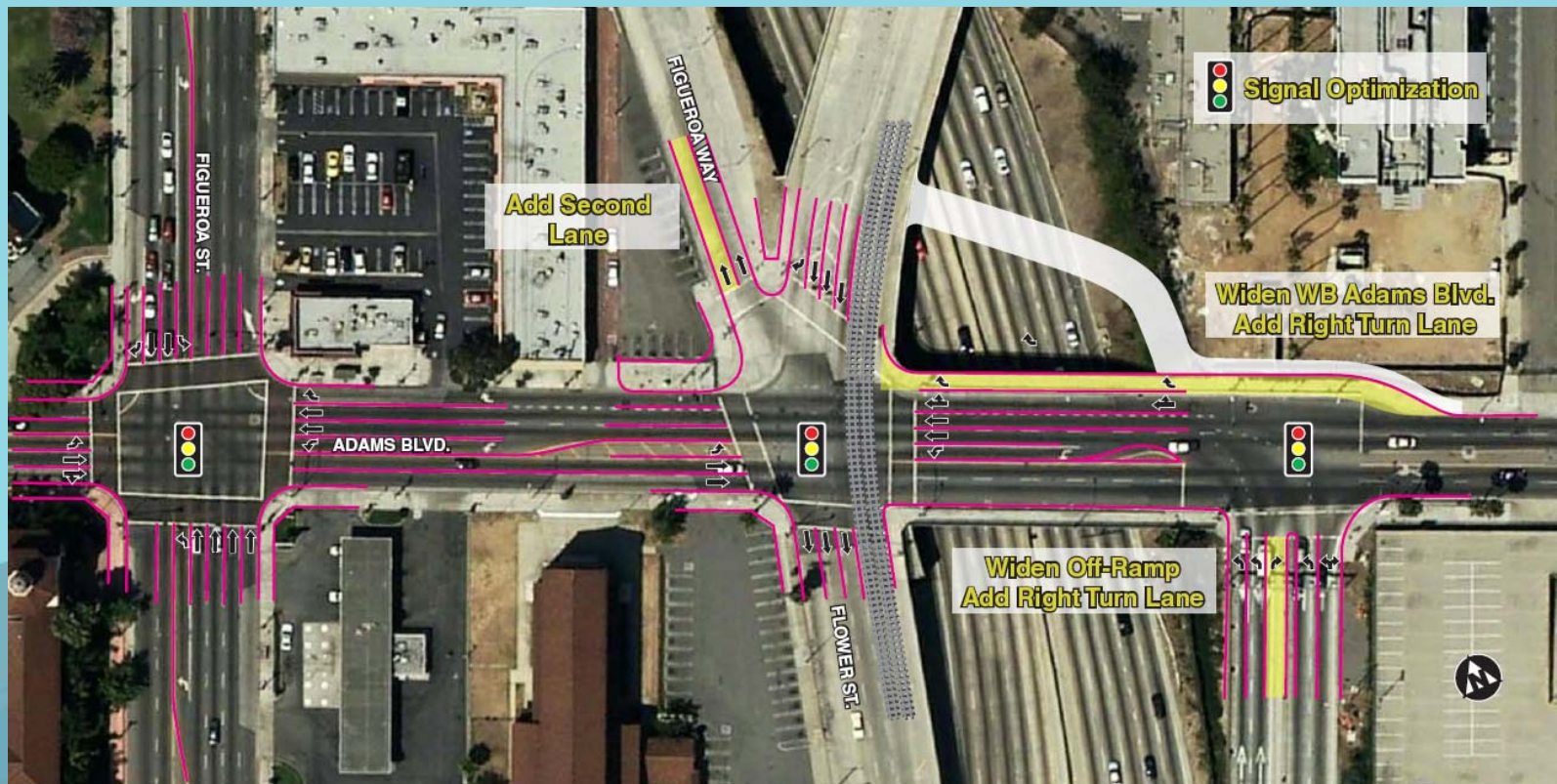
Minor widening

Design exceptions are required



Planned Improvements – I-110

- > Widen Adams Blvd to add right-turn lane
- > Sidewalk re-located to create pedestrian plaza



Adams Blvd. Pedestrian Overcrossing

- ✓ **Separate Bridge because of Physical Constraints**
 - ✓ **Enhanced Pedestrian Flow**
 - ✓ **Enhanced Safety**



Metro

Toll Rates

- > Minimum Toll per Mile: \$0.25
- > Maximum Toll per Mile: \$1.40
- Avg Peak Toll (End to End) – I-110 is \$4



A photograph of a highway sign for Express Lanes. The sign is rectangular with a black background and white text. At the top left is a small logo with a purple triangle and a green triangle. To the right of the logo, the words "EXPRESS LANES" are written in white. Below this, there are two rows of text: "W 39th St" followed by "\$ 3.00", and "W Adams Blvd" followed by "\$ 4.00". At the bottom of the sign, it says "HOV 2+ NO TOLL" in white.

Location	Toll Rate
W 39th St	\$ 3.00
W Adams Blvd	\$ 4.00

HOV 2+ NO TOLL

- > Toll Rates will vary within the range based upon demand.
- > **The Toll Rate is based on traffic levels in the ExpressLanes to ensure 45 mph.**
- > **Maximum toll represents a Price to Discourage More Entry rather than generate more revenue**



Balanced Approach to Equity

- > State Law Requires Assessment of Impact to Low Income Commuters – 1st in the State
- > Low Income Commuter Assessment (LICA) Peer Review by USC, UCLA, and EDF; Draft Reviewed by Corridor Advisory Groups
- > LICA Approved by Metro Board March 2010
- > ExpressLanes Toll Credit Program: \$25 Toll Credit (one-time), \$3 monthly account maintenance fee waived (on-going) – 1st in the State
- > Significant Transit Investment (before revenue operations and after)
- > Net Toll Revenues reinvested in transit & carpool lane improvements in the corridor where generated



Metro



Project Schedule

Description	2009	2010	2011	2012	2013
Toll Policy	●				
Low Income Commuter Assessment		●			
Environmental Documents Approved		●			
Preliminary Engineering		●			
Privacy Policy		●			
Award Design-Build-Operate-Maintain Contract		●			
TO BE COMPLETED					
Launch Marketing Campaign			●		
Begin Construction			●		
ExpressLanes Open to Traffic				●	

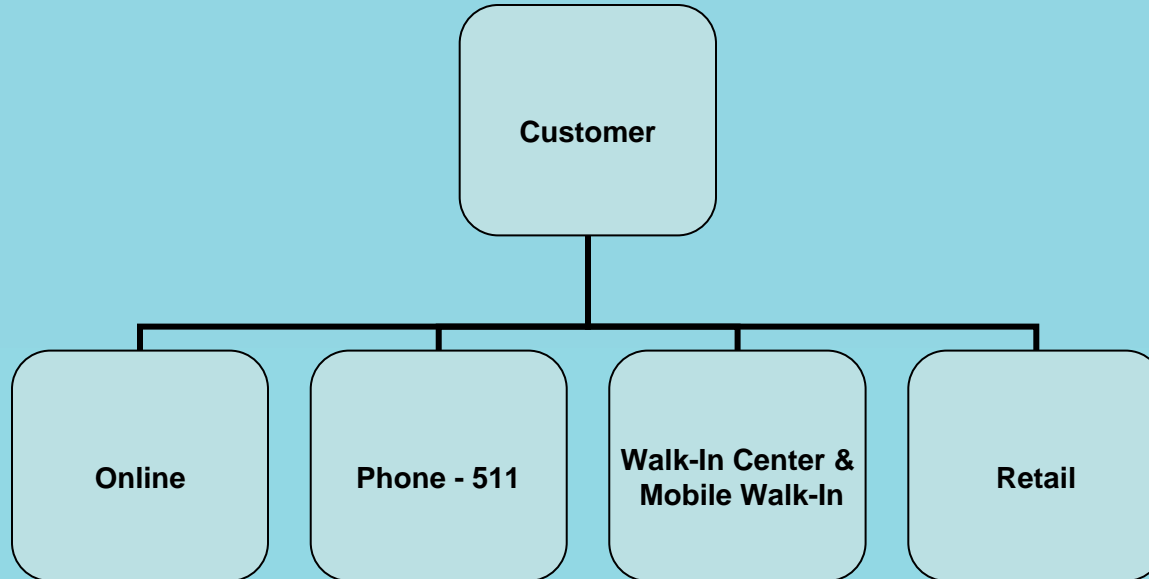


Customer Toolkit



Transponder Interest Form

> www.metro.net/expresslanes



CAG Engagement: Save-the-Date

- > Corridor Advisory Group Meetings (June 6-9, 2011)
- > Silver Line Enhanced Service on I-110 Harbor Transitway (June 26, 2011)
- > Metro ExpressLanes Groundbreaking (July 6, 2011)
- > Metro ExpressLanes “How It Works” Video Taping (July – Sept 2011)

