

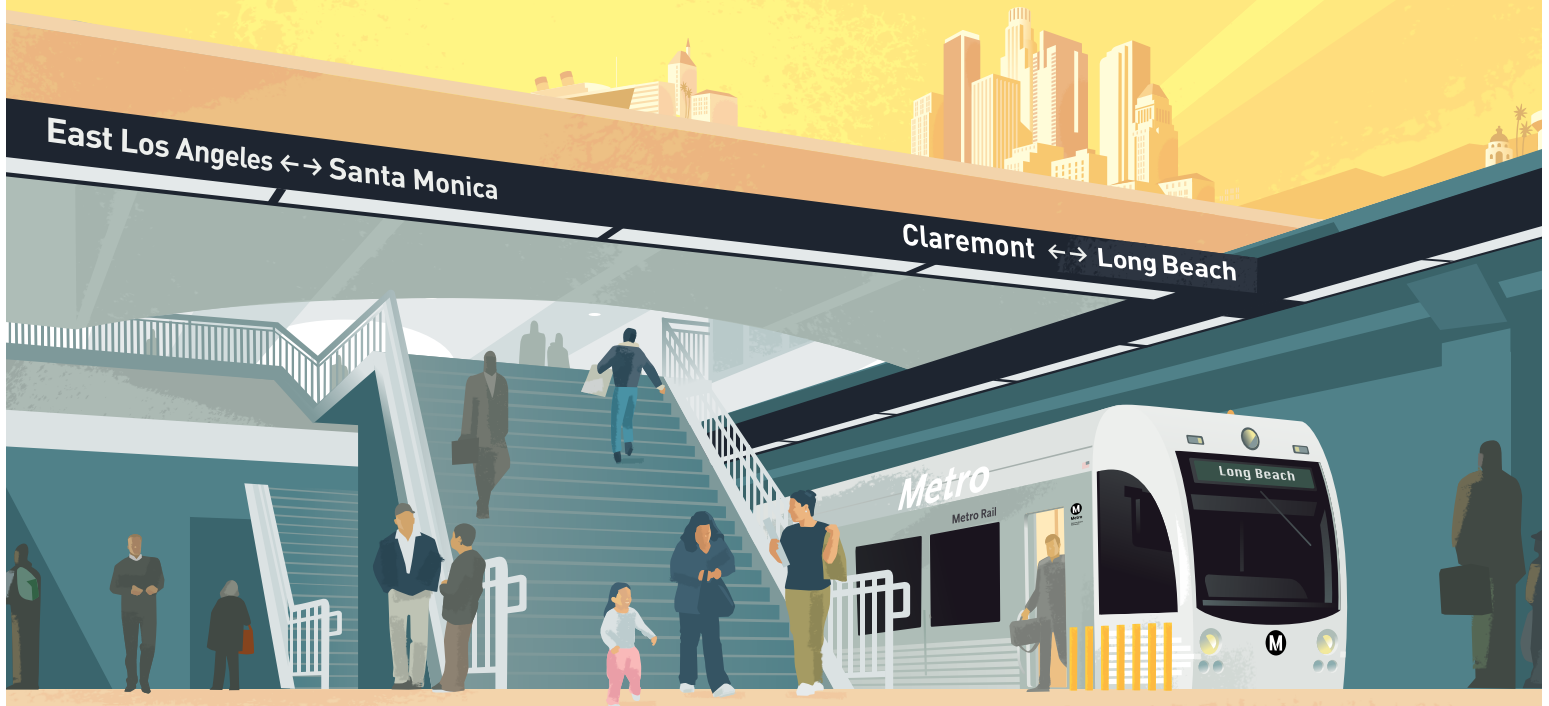
Regional Connector Transit Corridor

Final EIS/EIR Fact Sheet

At its meeting in October 2010, the Metro Board of Directors took the next step towards implementing the Regional Connector Light Rail Transit (LRT) project, or “Regional Connector,” by accepting the Draft Environmental Impact Statement and Environmental Impact Report (EIS/EIR) and designating a Locally Preferred Alternative (LPA). Staff was then directed to begin work on the Final EIS/EIR and to enter Preliminary Engineering (PE) for the fully underground project alternative. Metro formally entered into PE in January 2011.

The Regional Connector LPA includes three new underground stations at 2nd and Hope, 2nd and Broadway, and 2nd and Central. In an attempt to address specific community concerns, the 2nd and Central station has been refined, and is now expected to be located at 1st and Central.

The Regional Connector will connect the Metro Gold Line, Blue Line, and Expo Line, eventually enabling passengers to travel on Metro’s LRT system north/south from Claremont to Long Beach and east/west from the Eastside to Santa Monica without the need to transfer at 7th St/Metro Center. By providing continuous through service between these lines, the Regional Connector will improve access to both local and regional destinations – and greatly improve the connectivity of the transportation network for the region.



Metro[®]

Next Steps

Metro is currently developing the Final EIS/EIR, which involves reviewing and responding to the hundreds of comments submitted during the Draft EIS/EIR public comment period. Comments and questions submitted will be addressed in the Final EIS/EIR document. In addition to the responses to questions and comments, staff will continue to refine the LPA, enter into PE and develop the final Mitigation Monitoring and Reporting Program (MMRP). Other issues to be addressed in the Final EIS/EIR process include station planning and urban design, Metro's Art Program and refining cost estimates.

MMRP

As part of the Final EIS/EIR, the MMRP will be developed to specify and monitor actions for mitigation measures that address the environmental impacts of the LPA. The plan proposes mitigation measures tied to specific impacts identified in the Final EIS/EIR, and determines how each measure will be implemented and the parties responsible for monitoring the implementation.

Project Schedule

The Final EIS/EIR for the Regional Connector project is expected to take less than a year to complete. This phase involves the completion of the Final EIS/EIR and PE. Metro will continue to engage with project stakeholders throughout this and future phases of this project. Additionally, community update meetings are anticipated to take place in spring 2011.

Remaining decisions about the Regional Connector, including the recommended mitigation measures, will be made at the conclusion of the Final EIS/EIR by the Metro Board of Directors. At that time, they will be asked to certify the environmental document for the project. Metro will then seek a Record of Decision (ROD) from the Federal Transit Administration (FTA).

NOVEMBER 2010

Commence work on the Final EIS/EIR

SPRING & SUMMER 2011

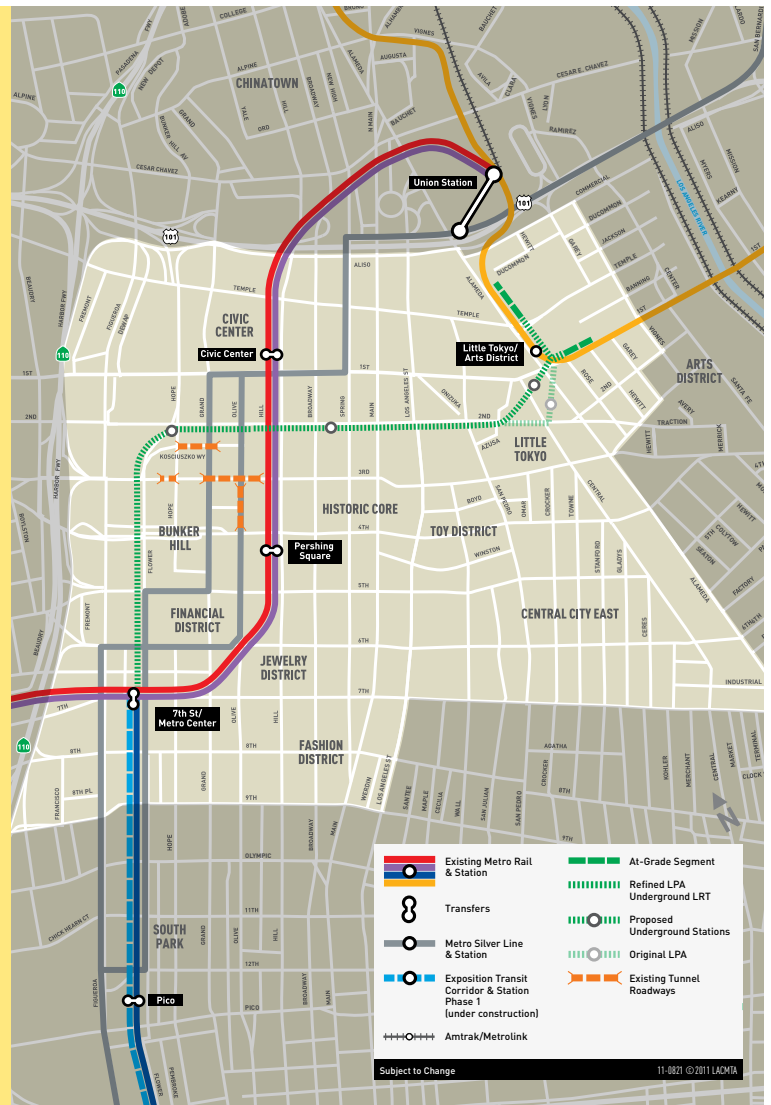
Community Update Meetings

JULY 2011 (ESTIMATED)

Anticipated release of Final EIS/EIR

LATE SUMMER 2011

Metro Board Approval & Certification of Final EIS/EIR



Stay Connected

Please use the following contact tools to access more project information, ask a question or provide comments:

WEB

metro.net/regionalconnector

EMAIL

regionalconnector@metro.net

FACEBOOK

[facebook.com/metroregionalconnector](https://www.facebook.com/metroregionalconnector)

TWITTER

[metroconnector](https://twitter.com/metroconnector)

PHONE

213.922.7277