

Mobility. Environment. Community. Economy. Technology



I-710 Corridor Project EIR/EIS

metro.net

# I-710 EIR/EIS Community Impact Assessment Overview

## I-710 Corridor Advisory Committee August 27, 2009



# Overview

- Review:
  1. Community impact concerns from I-710 Tier 2 Committee process
  2. Community Impact Assessment (CIA) Process  
(including CIA Components)
  3. CIA Schedule/Timeline
  4. Next Steps

# 1. Concerns from Tier 2 Process

- Air Quality/Health Risk impacts
- Business impacts
- Environmental Justice
- Access/Mobility
- Visual impacts
- Noise impacts
- Construction impacts

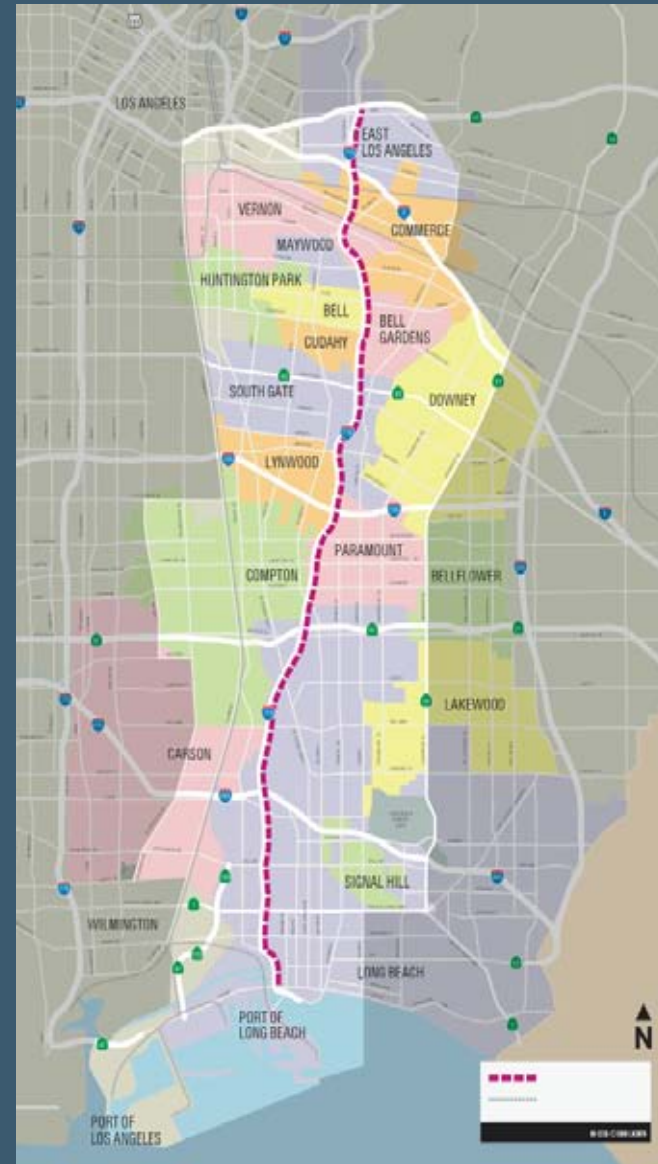
## 2. CIA Process

- Establish baseline and affected environment for CIA components
  - Gather and review existing data
  - Develop Community Profiles
- Analyze impacts for CIA components
  - Analyze impacts of the three Build Alternatives and compare to No Build
  - Conduct both quantitative and qualitative analyses
  - Integrate consideration of public health concerns
- Develop avoidance, minimization, mitigation, and enhancement measures

# CIA Components

- Land Use
- Park and Recreation Facilities
- Community Character and Cohesion
- Development Trends/Growth
- Environmental Justice
- Economics
- Community Facilities and Services
- Relocations
- Access/Parking
- Community Perspectives

Source: Caltrans Environmental Handbook Volume 4



# CIA Components – Land Use

Objective: Determine effects to existing and future land uses, and assess the project's consistency with adopted goals and policies.

- Existing and Future Land Uses
  - e.g. residential, commercial, industrial, recreational, transportation, agricultural, etc.
- Adopted Goals and Policies
  - Federal, state, regional and local plans and programs

# CIA Components – Parks and Recreation Facilities

Objective: Determine effects on parks and other recreation facilities.

- Location
- Size
- Amenities
- Access

# CIA Components – Community Character & Cohesion

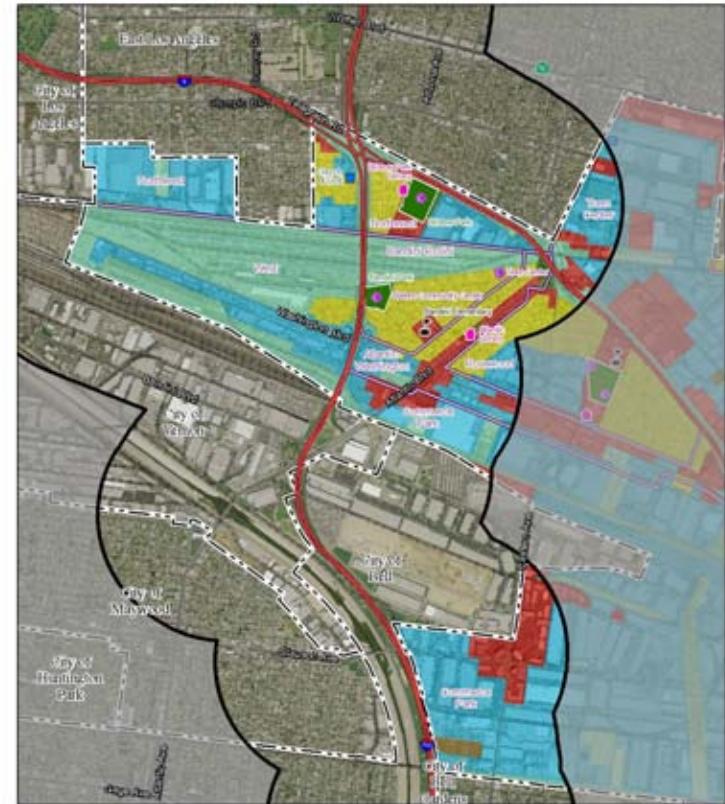
Objective: Determine how the project would affect the character of the community and if this results in impacts to cohesion (i.e. will the project divide the community physically?).

- Define neighborhood & community boundaries within the study area
- Develop Community Profiles
  - Demographic Characteristics
  - Social History
  - Community Facilities (e.g. parks, schools, churches, community recreation centers, etc.)

# Community Profile Maps – Example



- LEGEND**
- School
  - Community Center
  - Library
  - Places of Worship
  - Fire Station
  - Park



- LEGEND**
- 1,710 Flood Area
  - School
  - Library
  - Community Center
  - Places of Worship
  - Park
  - Fire Station
  - Agriculture
  - Commercial and Services
  - Industrial
  - Mixed Commercial and Industrial
  - Open Space and Recreation
  - Residential
  - Transportation and Utilities
  - Vacant
  - Flooded Areas

# CIA Components – Development Trends/Growth

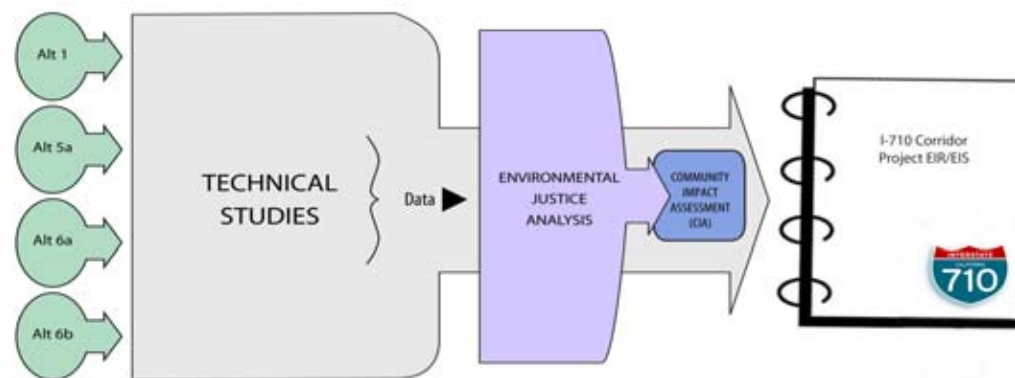
Objective: Determine the project's growth-related effects.

- Growth development trends
- Factors that influence growth
- Constraints to growth
- Assessment of growth-related effects

# CIA Components – Environmental Justice

Objective: Assess potential for disproportionate impacts and/or benefits to minority and/or low-income populations.

- Federal Executive Order 12898
- Quantitative and/or qualitative impact analyses for the following:
  - Traffic, visual, noise, safety, relocation, air quality, water quality, emergency and community services, hazardous materials and waste, cultural resources, economic, and community aesthetic enhancement.



# CIA Components – Economics

Objective: Determine effects on economics within the corridor both at a local level and for the corridor as a whole.

- Tax Revenue
- Employment
- Labor Force Characteristics
- Commuting Patterns
- Employment Plans and Programs
- Property Values (qualitative)

# CIA Components – Community Facilities & Services

Objective: Determine effects on community facilities and services.

- Fire Protection Services
- Police Services
- Emergency Response
- Water/Wastewater Services
- Solid Waste Services
- Public Transportation
- Schools

# CIA Components – Relocations & Access and Parking

- **Relocations**

Objective: Determine any residential/business relocations, and assess the ability to relocate within the same community.

- Residential and business displacements

- **Access and Parking**

Objective: Determine how project affects local access and parking.

- Increasing or decreasing public access
- Commute patterns
- Loss of parking
- Construction detours

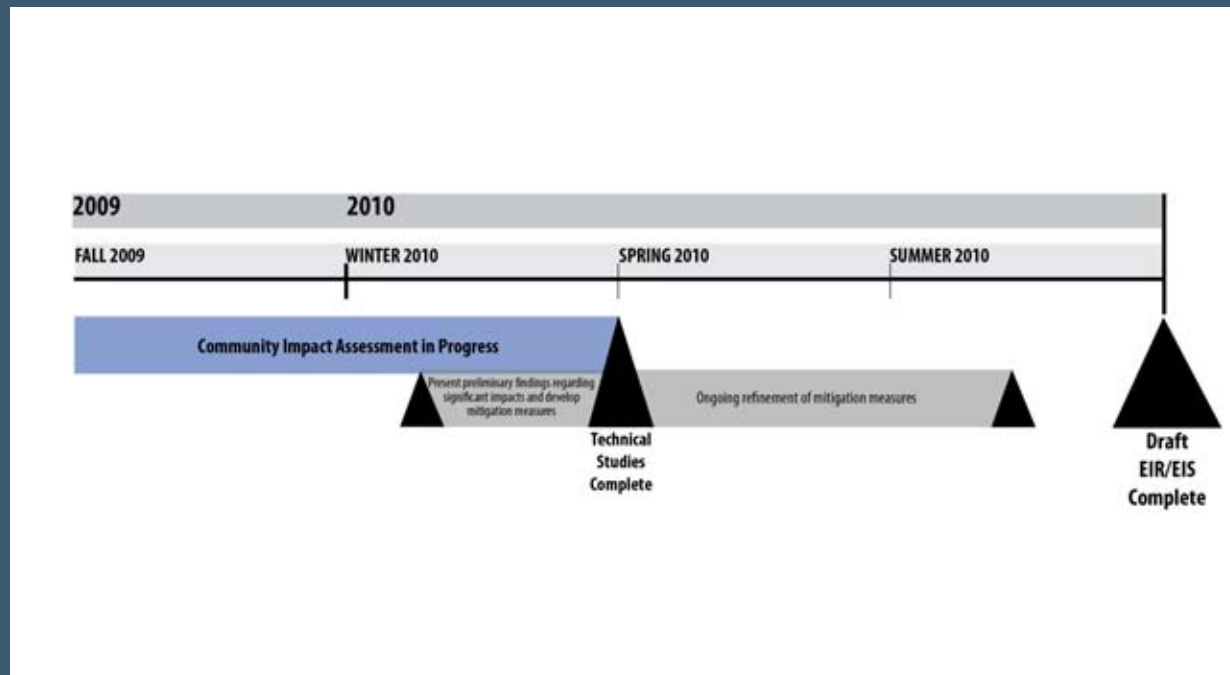
# CIA Components – Community Perspectives

Objective: Document what the community's perspective is on the project.

- Previous outreach conducted for the I-710 Corridor (Tier 1 and 2 processes)
- I-710 Corridor Project Community Participation Framework
  - Local Advisory Committees
  - Corridor Advisory Committee

### 3. CIA Schedule/Timeline

- Complete Draft Community Impact Assessment (CIA) – **Late 2009**
- Review preliminary findings and develop avoidance, minimization, mitigation, and enhancement measures – **Late 2009 to Early 2010**
- Complete Final CIA – **Winter/Spring 2010**
- Integrate CIA findings and recommendations into the Draft EIR/EIS – **Summer 2010**



## 4. Next Steps

- Continue development of Community Profiles
- Local Advisory Committee (LAC) review of Draft Community Profiles –  
September/ October 2009