

Mobility. Environment. Community. Economy. Technology



I-710 Corridor Project EIR/EIS

metro.net

# I-710 Environmental Subject Working Group Meeting # 5 Community Impact Assessment Overview

June 4, 2009



# Overview

- **Review:**
  1. **Community impact concerns from I-710 Tier 2 Committee process**
  2. **Community Impact Assessment (CIA) Process**  
(including CIA Components)
  3. **CIA Schedule/Timeline**
  4. **Next Steps**

# 1. Concerns from Tier 2 Process

- Air Quality/Health Risk impacts
- Business impacts
- Environmental Justice
- Access/Mobility
- Visual impacts
- Noise impacts
- Construction impacts

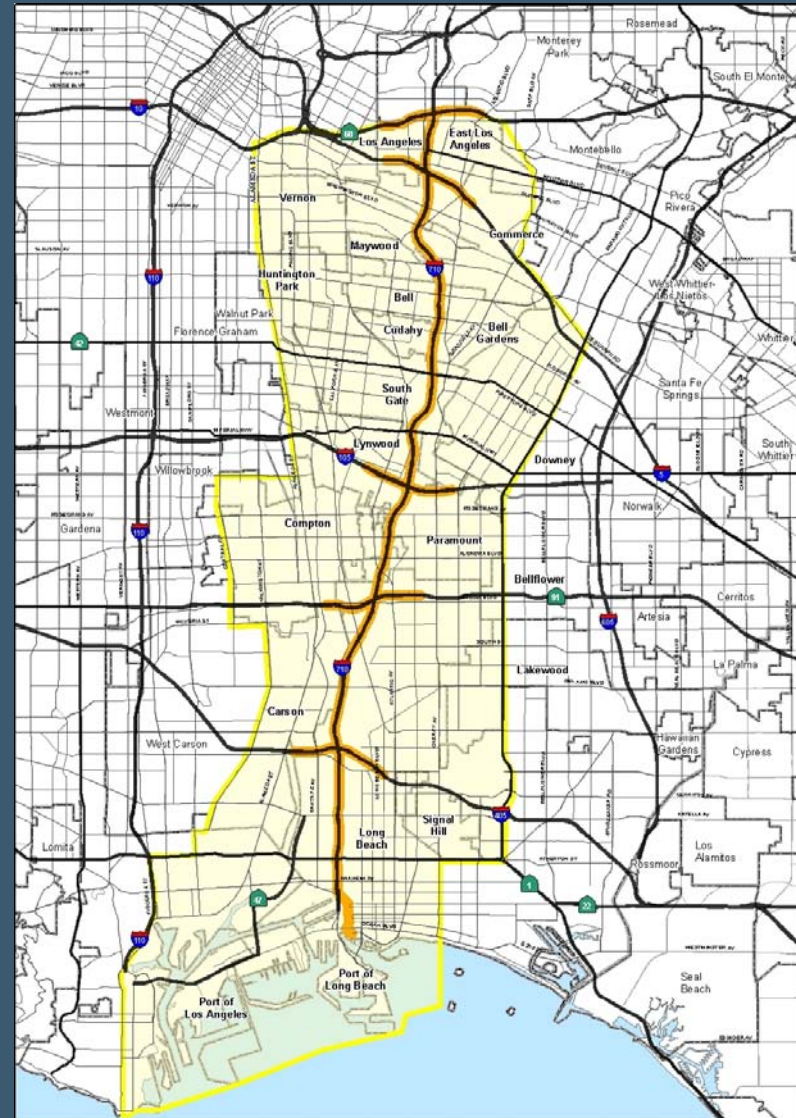
## 2. CIA Process

- Establish baseline and affected environment for CIA components
  - Gather and review existing data
  - Develop Community Profiles
- Analyze impacts for CIA components
  - Analyze impacts of the three Build Alternatives and compare to No Build
  - Conduct both quantitative and qualitative analyses
  - Integrate consideration of public health concerns
- Develop avoidance, minimization, mitigation, and enhancement measures

# CIA Components

- Land Use
- Park and Recreation Facilities
- Community Character and Cohesion
- Development Trends/Growth
- Environmental Justice
- Economics
- Community Facilities and Services
- Relocations
- Access/Parking
- Community Perspectives

Source: Caltrans Environmental Handbook Volume 4



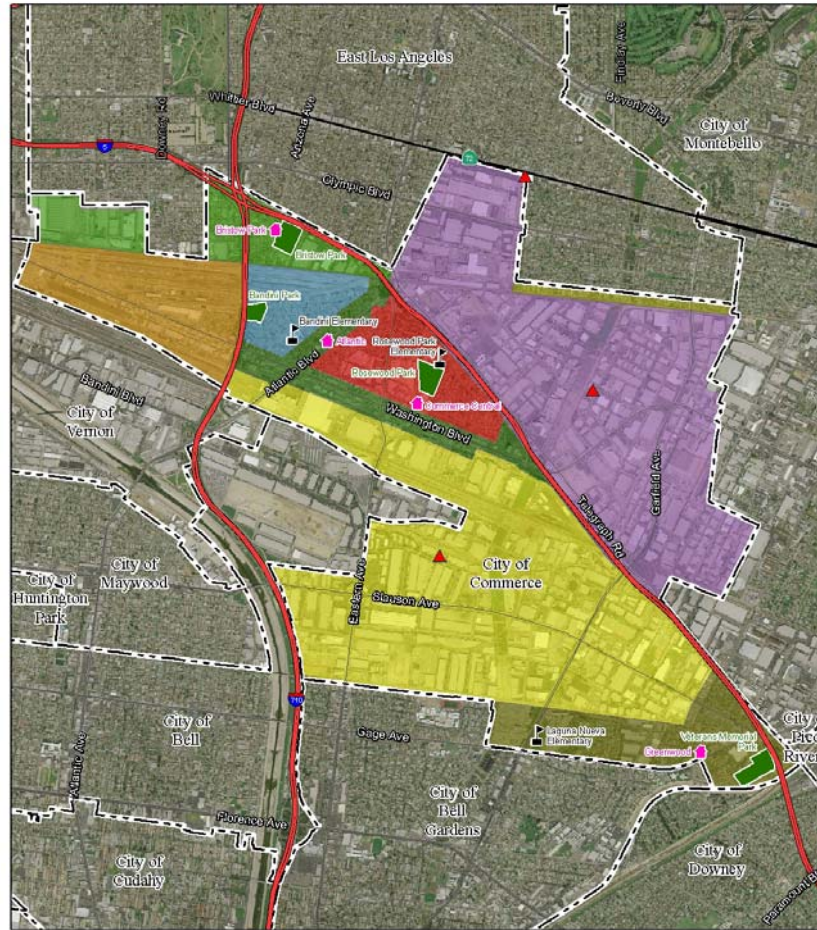
# CIA Components – Land Use & Parks and Recreation Facilities

- **Land Use**
  - **Existing and Future Land Uses**
    - e.g. residential, commercial, industrial, recreational, transportation, agricultural, etc.
  - **Adopted Goals and Policies**
    - Federal, State, Regional and local plans and programs
- **Parks and Recreation Facilities**
  - Location, size, amenities, and access

## CIA Components – Community Character & Cohesion

- Define neighborhood & community boundaries within the study area
- Develop Community Profiles
  - Demographic Characteristics
  - Social History
  - Community Facilities (e.g. parks, schools, churches, community recreation centers, etc.)

# Community Profile Map – Example



LEGEND

- |                |                                 |                 |
|----------------|---------------------------------|-----------------|
| ▲ School       | City of Commerce Planning Areas | ■ Rosewood      |
| ● Library      | ■ Northwest                     | ■ Commerce Park |
| ▲ Fire Station | ■ West                          | ■ Town Center   |
| ■ Park         | ■ Bandini-Rosini                | ■ Southeast     |
|                | ■ Atlantic-Washington           | ■ Ferguson      |

## CIA Components – Development Trends/Growth

- Growth development trends
- Factors that influence growth
- Constraints to growth
- Assessment of growth-related effects

## CIA Components – Environmental Justice

- **Federal Executive Order 12898**
- **Assess potential for disproportionate impacts and/or benefits to minority and/or low-income populations**
- **Quantitative and/or qualitative impact analyses for the following:**
  - **Traffic, visual, noise, safety, relocation, air quality, water quality, emergency and community services, hazardous materials and waste, cultural resources, economic, landscaping, and truck/weight facilities.**

# CIA Components – Economics

- Tax Revenue
- Employment
- Labor Force Characteristics
- Commuting Patterns
- Employment Plans and Programs
- Property Values

# CIA Components – Community Facilities & Services

- Fire Protection Services
- Police Services
- Emergency Response
- Water/Wastewater Services
- Solid Waste Services
- Public Transportation
- Schools

# CIA Components – Relocations & Access and Parking

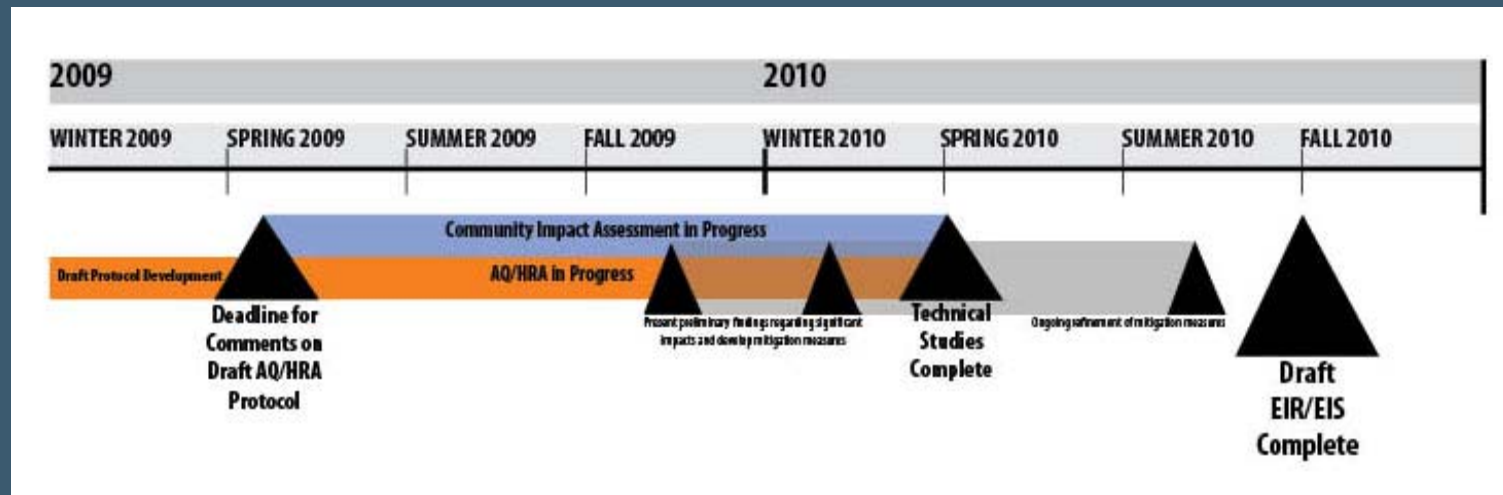
- **Relocations**
  - Residential and business displacements
  
- **Access and Parking**
  - Increasing or decreasing public access
  - Commute patterns
  - Loss of parking
  - Construction detours

## CIA Components – Community Perspectives

- Previous outreach conducted for the I-710 Corridor (Tier 1 and 2 processes)
- I-710 Corridor Project Community Participation Framework
  - Local Advisory Committees
  - Corridor Advisory Committee

### 3. CIA Schedule/Timeline

- Complete Draft Community Impact Assessment (CIA) – **Late 2009**
- Review preliminary findings and develop avoidance, minimization, mitigation, and enhancement measures – **Late 2009 to Early 2010**
- Complete Final CIA – **Early 2010**
- Integrate CIA findings and recommendations into the Draft EIR/EIS – **Summer 2010**



## 4. Next Steps

- Continue development of Community Profiles
- Local Advisory Committee (LAC) review of Draft Community Profiles – **Summer 2009**