

# I-405 Sepulveda Pass Widening Project

Quarterly Community Meeting  
February 23, 2010



Ventura Blvd	1 1/4
Ventura Fwy	2
Burbank Blvd	2 1/2



Metro



Caltrans

# Project Overview

- 10-mile northbound HOV lane
- Southbound lane standardization
- 20 ramp improvements
- 8 new ramp structures
- Widening of 12 bridge structures
- 3 new bridge structures

# Project Overview

- 18 miles of retaining wall and sound wall
- \$1.034 billion
- Project completion 2013
- Metro Board of Directors awarded project to Kiewit Pacific Company on April 24, 2009
- Issued Notice to Proceed June 2, 2009
- Project commencement August 31, 2009



# Project Boundaries

## Northern Boundary

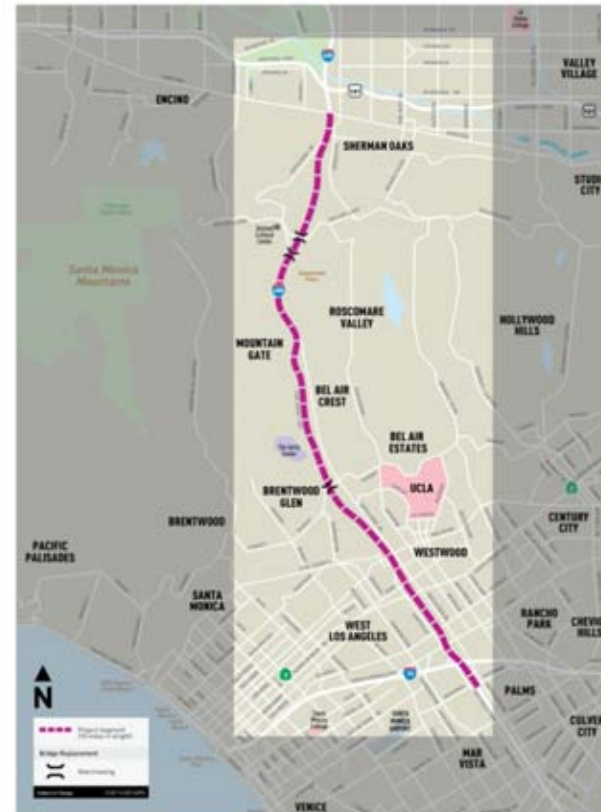
Greenleaf St. – South of the Ventura Freeway (U.S. 101)

## Southern Boundary

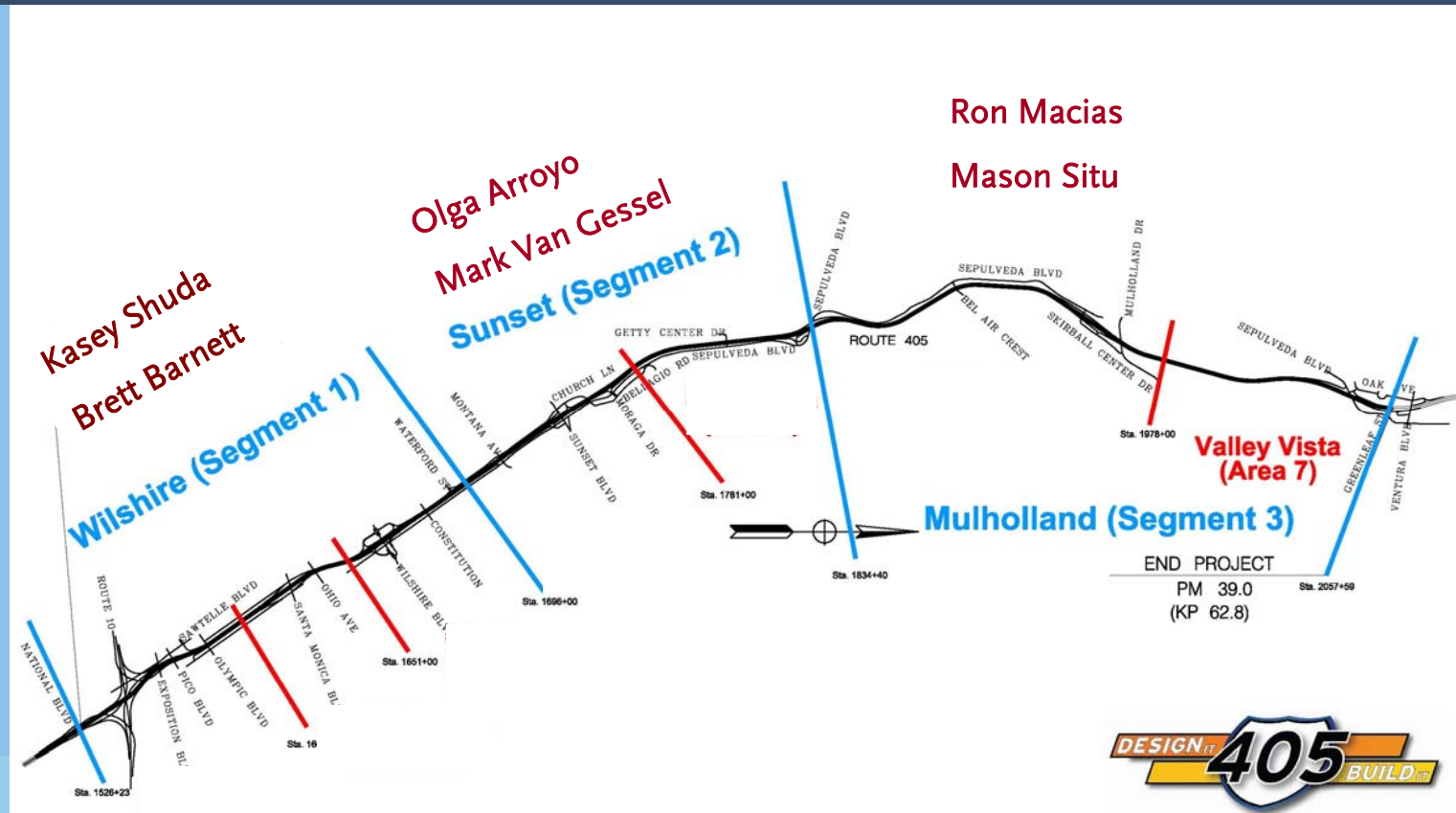
National Blvd., South of the Santa Monica-Rosa Parks Freeway (I-10)



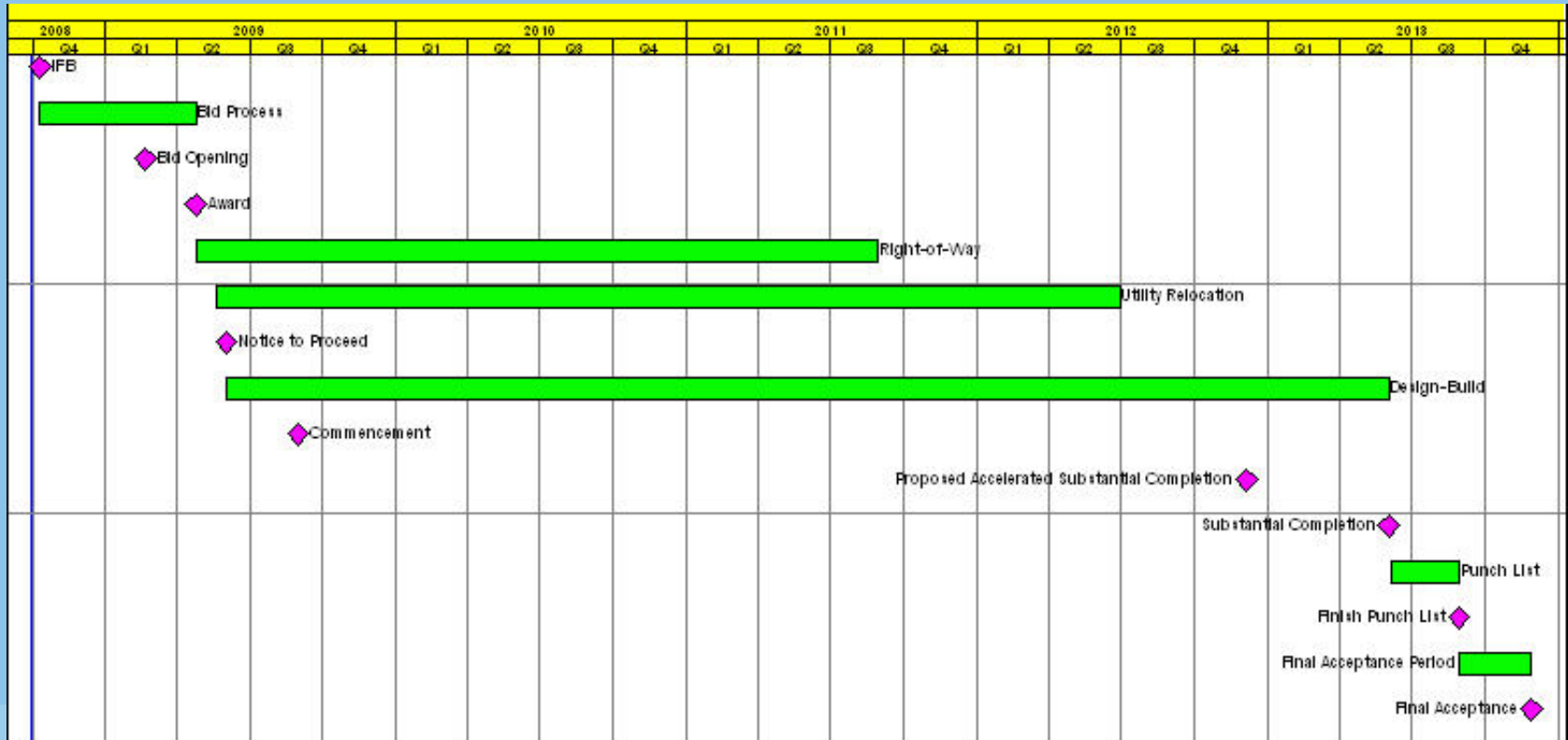
I-405 Sepulveda Pass Widening Project Map



# Project Approach



# Design/Build Project Schedule



# Three-Month Look Ahead Mainline

Activity	Closures/Notes	Work Hours	Projected Date
Striping (reconfigure lanes) <i>except S/B between 101 and The Getty Center</i>	<ul style="list-style-type: none"> <li>• Full segmented freeway closures</li> <li>• Traffic detours</li> <li>• Lane reductions</li> </ul>	Night	Through mid-March
Saw cut and grinding	<ul style="list-style-type: none"> <li>• Lane reductions</li> <li>• Traffic detours</li> </ul>	Night	February 16 – early April
K rail placement (in sections)	<ul style="list-style-type: none"> <li>• Lane reductions</li> <li>• Ramp closures</li> </ul>	Night	March 1

*Wilshire and Sunset ramps will not be closed at the same time.*



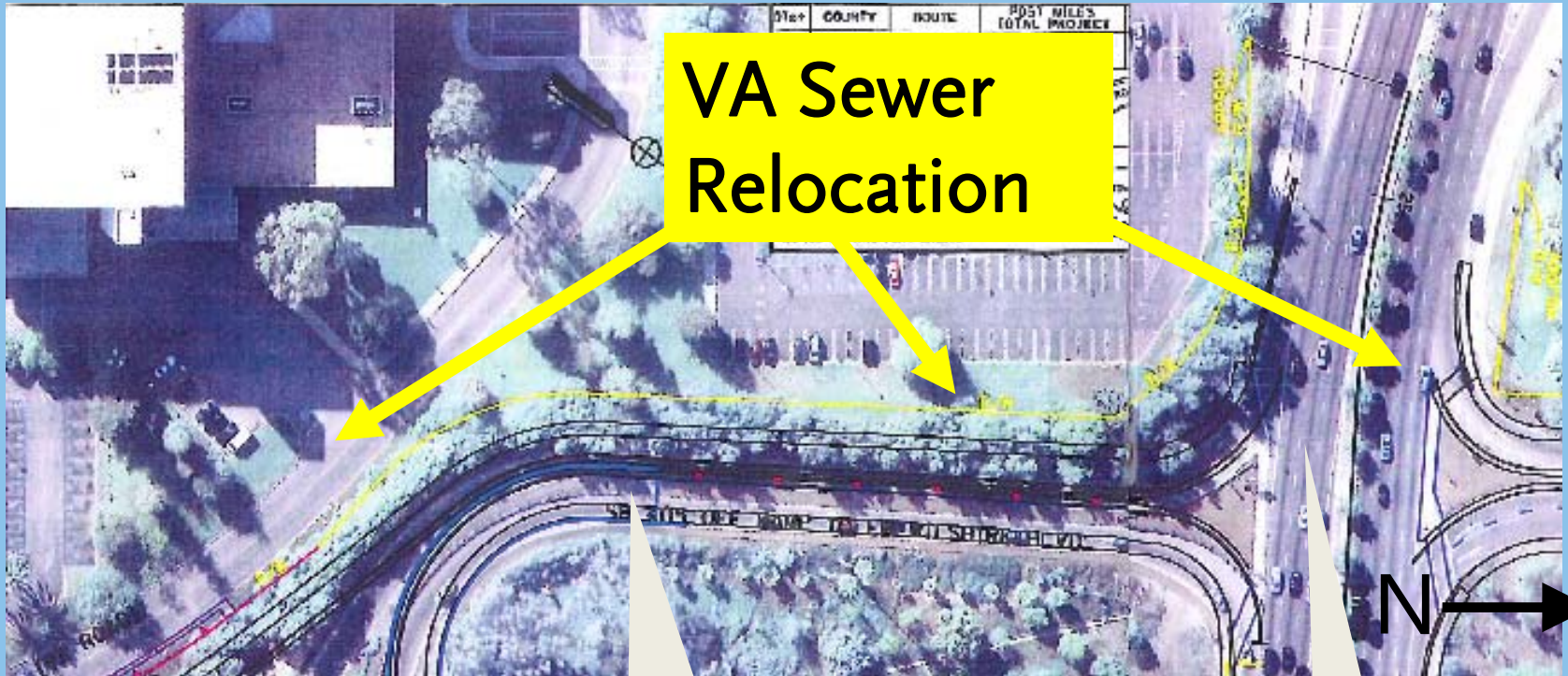
# Three-Month Look Ahead

## Wilshire Segment (National to Waterford)

Activity	Closures/Notes	Work Hours	Projected Date
Development of Wilshire Yard		Day	Through mid-March
Move in to Wilshire yard		Day	Mid-March
Clear Wilshire on/off ramps (west side)		Day	Mid-March
Build MSE walls S/B I-405 at Wilshire	Possible night work for dirt hauling	Day	Mid-March
VA Sewer Relocation	Lane closures on Bonsall Road (VA property)	Day	Late March through mid-June
Pile Driving on Wilshire N/B side		Day	Late April



# Wilshire Segment Map

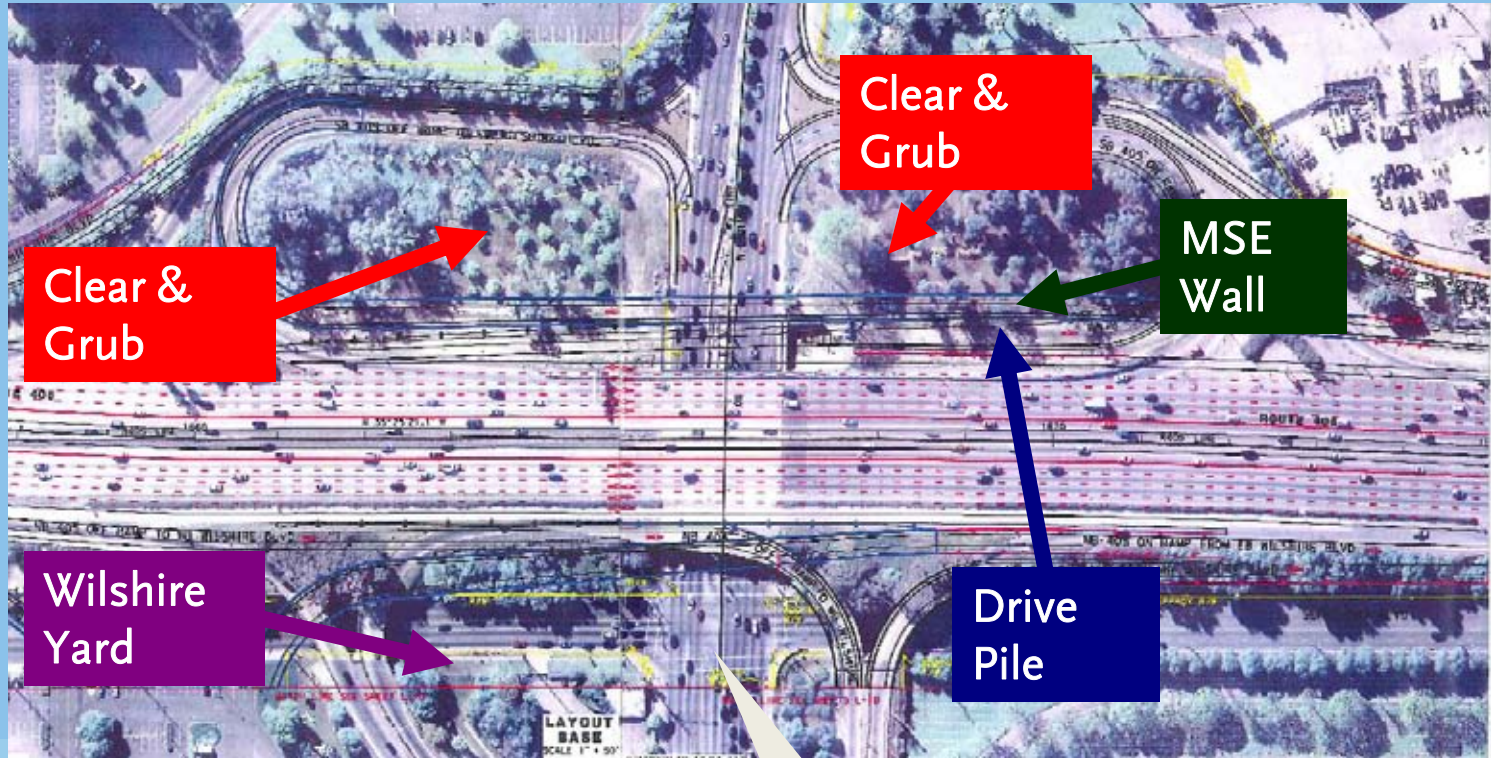


Sepulveda Blvd.

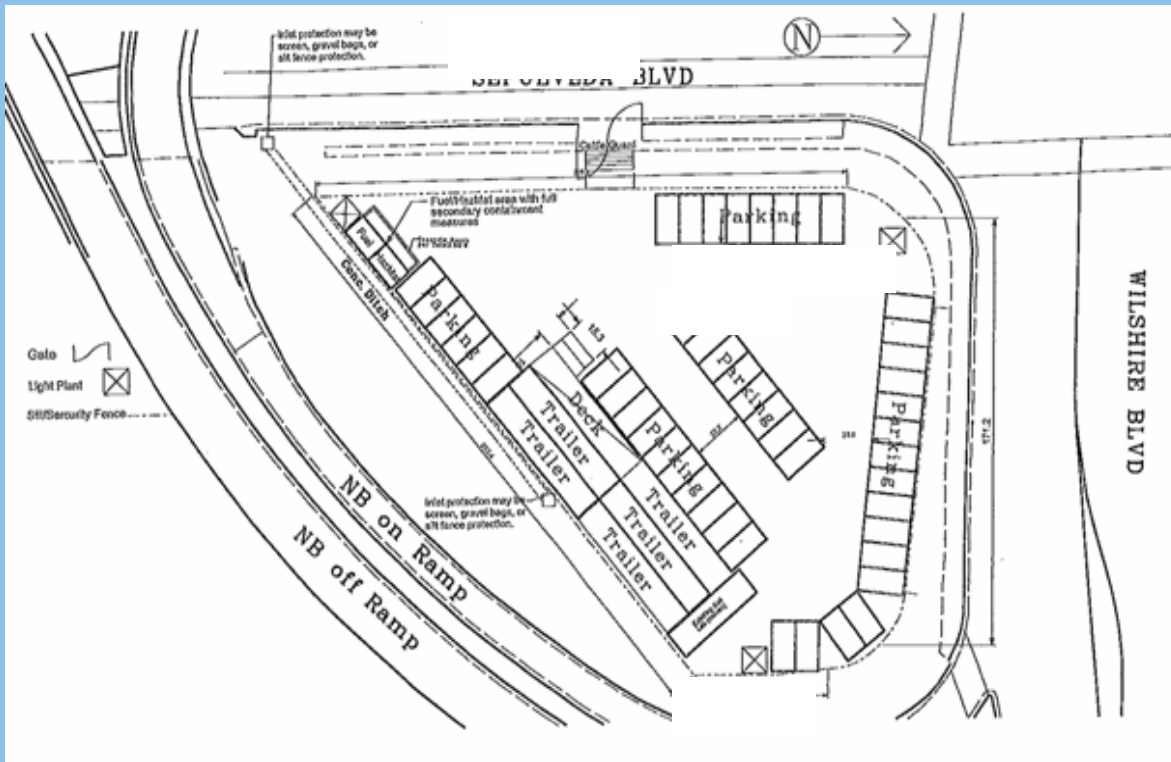
Wilshire Blvd.



# Wilshire Segment Map



# Wilshire Yard Layout



- Caltrans owned property
- Clear vegetation
- Fence area
- Pave space
- Set up field offices

# Three-Month Look Ahead

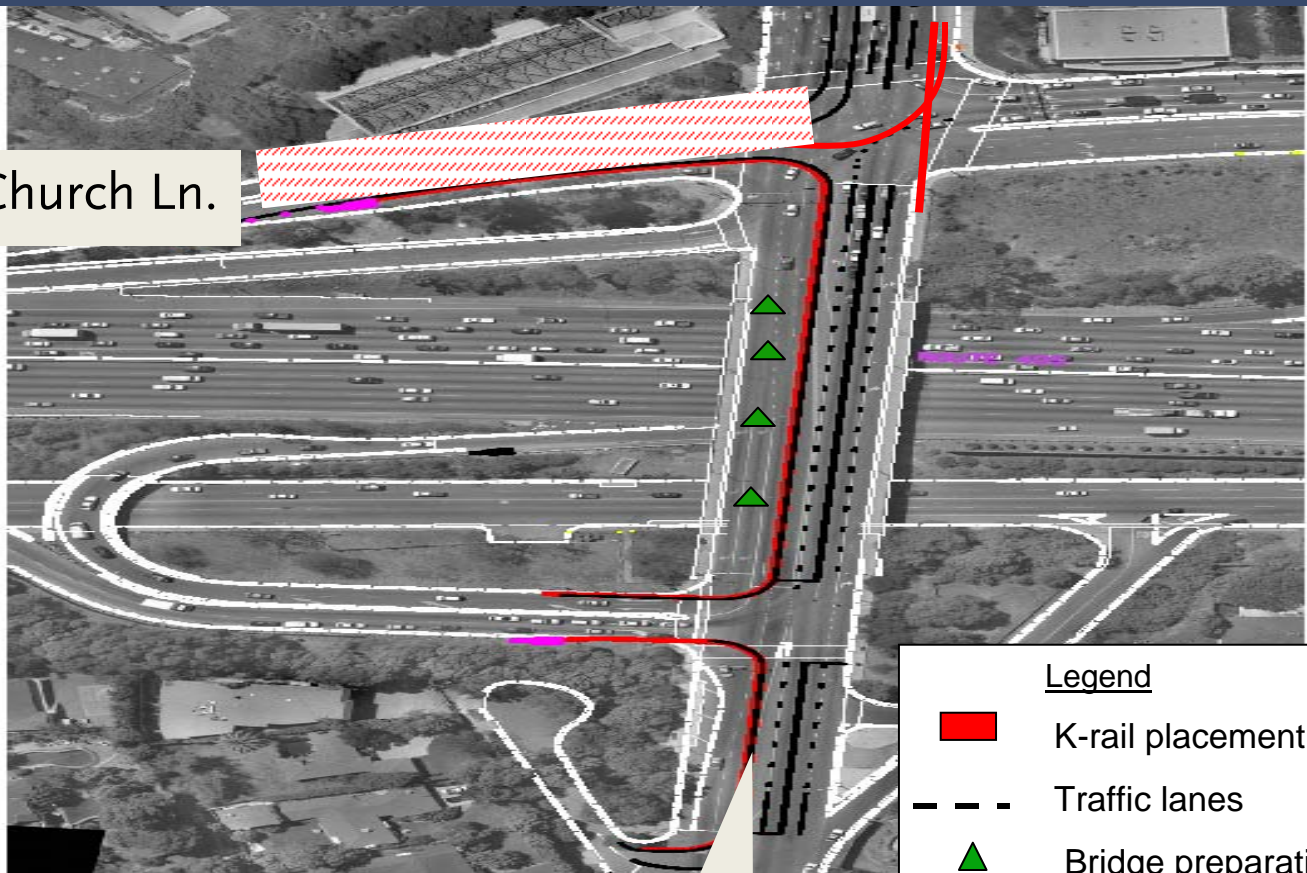
## Sunset Segment (Waterford to Sepulveda)

Location	Activity	Closures/Notes	Work Hours	Projected Date
Between Montana and Sunset	Undergrounding utilities	Lane reduction during off-peak hours. Closure of Sepulveda Intersection at Homedale, Bronwood and Alleyway.	Day/Night	March
	Clear hillside (shrubs) Phase I	Lane reduction	Day	Early March
	Build access		Day	Late March
	Clear hillside (trees) Phase II	Lane reduction	Day	May
	Begin retaining and sound walls		Day/Night	May

# Three Month Look Ahead Sunset Segment (Continued)

Location	Activity	Closures/Notes	Work Hours	Projected Date
Sunset bridge	Clear on/off ramps	Lane closures	Day/Night	March
	Realign traffic	Traffic reconfiguration (2 lanes in each direction) Lane closures	Night	March
	Begin Sunset bridge demolition	Traffic delays Lane reduction	Day/Night	Late March
	Yard Development		Day	March





# LADWP and I-405 Collaboration Efforts



Church Ln.

Sunset Blvd.

Legend

-  K-rail placement
-  Traffic lanes
-  Bridge preparation
-  LADWP Project



# Three Month Look Ahead

## Mulholland Segment (Sepulveda to 101 Highway)

Area	Activity	Closures/Notes	Work Hours	Projected Date
Valley Vista	Tree removal and house demo preparation		Day	April
	Demolition of 3 houses		Day	May
	Construction of retaining wall/sound wall	Construction trucks in/out via mainline. Will not use small residential streets.	Day/Night	June
Getty Trail Head	Clear and grub, crusher pad setup	No residents within impacted perimeter.	Day	March
	Construction of retaining walls (1836 and 1852)	Existing parking lot and hiking trail will be closed to allow for temporary trailers. Protected trees will be replaced per EIR.	Day/Night	April

# Three Month Look Ahead

## Mulholland Segment (Continued)

Area	Activity	Closures/Notes	Work Hours	Projected Date
Sherman Oaks Community	Clear and grub		Day/Night	April
	Construction of retaining walls (1992 and 2004)	Construction trucks in/out via mainline. Will not use small residential streets.	Day/Night	May
Skirball Bridge	Re-striping of Skirball Center Drive and K-rail placement	Traffic impact – one lane will be maintained in each direction.	Day/Night	May
	Demo north half of the bridge	Night time freeway closure.	Day/Night	June
Mission Land Fill	Site office set up	Traffic in/out from site office. Will re-stripe Sepulveda Blvd. to provide NB left-turn pocket into the site.	Day	March

# Traffic Management Plan (TMP)

Process

Contract requirements

Contractor's Plans

Approval process

Implementation

Coordination with Community Relations

# Pre-Construction Surveys

- Survey purpose
- Criteria
- Security of information

*To schedule an appointment contact  
Morgner Construction at 213-461-8100*

# Community Relations Team

Community Relations Role	Contact	Email
Wilshire Segment Lead	Kasey Shuda	<a href="mailto:ShudaK@metro.net">ShudaK@metro.net</a>
Sunset Segment Lead	Olga Arroyo	<a href="mailto:ArroyoO@metro.net">ArroyoO@metro.net</a>
Mulholland Segment Lead	Ron Macias	<a href="mailto:MaciasR@metro.net">MaciasR@metro.net</a>
New Media	Ned Racine	<a href="mailto:RacineN@metro.net">RacineN@metro.net</a>
Acting Manager	Lorena Y. Hernandez	<a href="mailto:HernandezL3@metro.net">HernandezL3@metro.net</a>
Manager	Yvette ZR Rapose	<a href="mailto:Raposey@metro.net">Raposey@metro.net</a>



# Community Relations Update

## February 2010

- Elected Officials Briefing
- CAC
- Quarterly Community Meeting
- West LA Bureau Traffic Committee Meeting
- South Bay Metro Governance Council Meeting
- Westwood Hills Coordination Meetings

## Social Media Update

- Twitter
- Nixle
- Facebook



The End

# Metro Community Relations

Project Hotline: (213) 922-3665

I405@metro.net

[www.metro.net/405](http://www.metro.net/405)

Twitter: [http://twitter.com/I\\_405](http://twitter.com/I_405)

Nixle: [nixle.com](http://nixle.com)

