

I-405 Sepulveda Pass Improvements Project

Quarterly Community Meeting

December 9, 2010

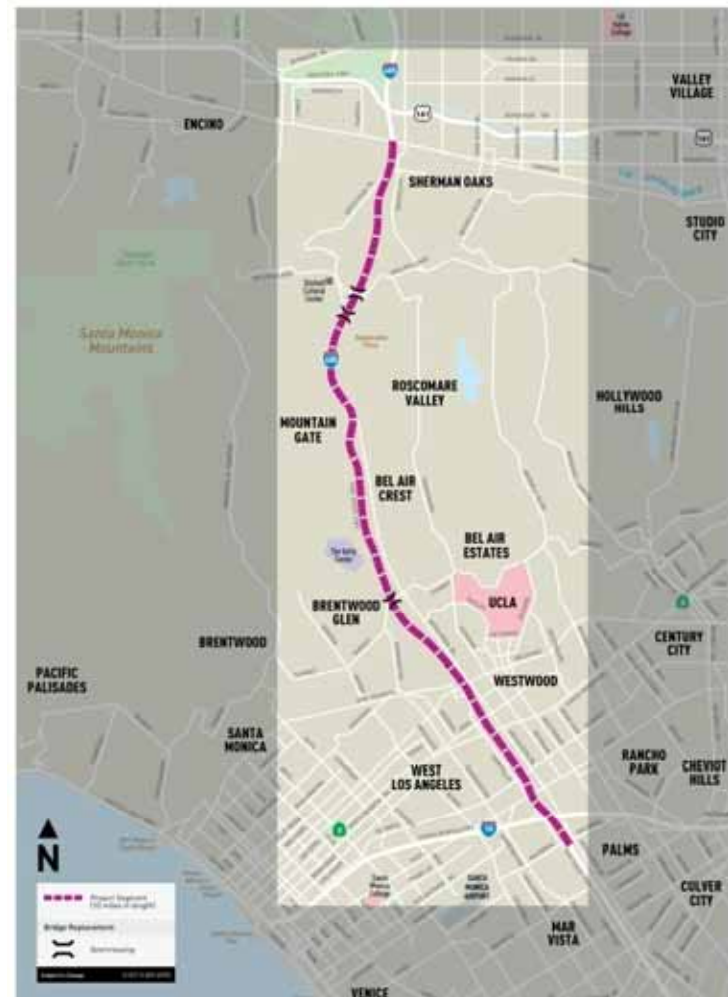


Project Boundaries

- Southern boundary from National Bl. south to the Santa Monica-Rosa Parks Freeway (I-10)
- Northern boundary from Greenleaf St. south of the Ventura Freeway (US 101)



I-405 Sepulveda Pass Widening Project Map



Project Scale

The I-405 Sepulveda Pass Widening Project will add a 10-mile northbound carpool lane on the San Diego Freeway (I-405) from the Santa Monica Freeway (I-10) to the Ventura Freeway (US 101). Ramps, bridges and sound walls also will be improved.

Completion of the \$1 billion project is projected for spring 2013.



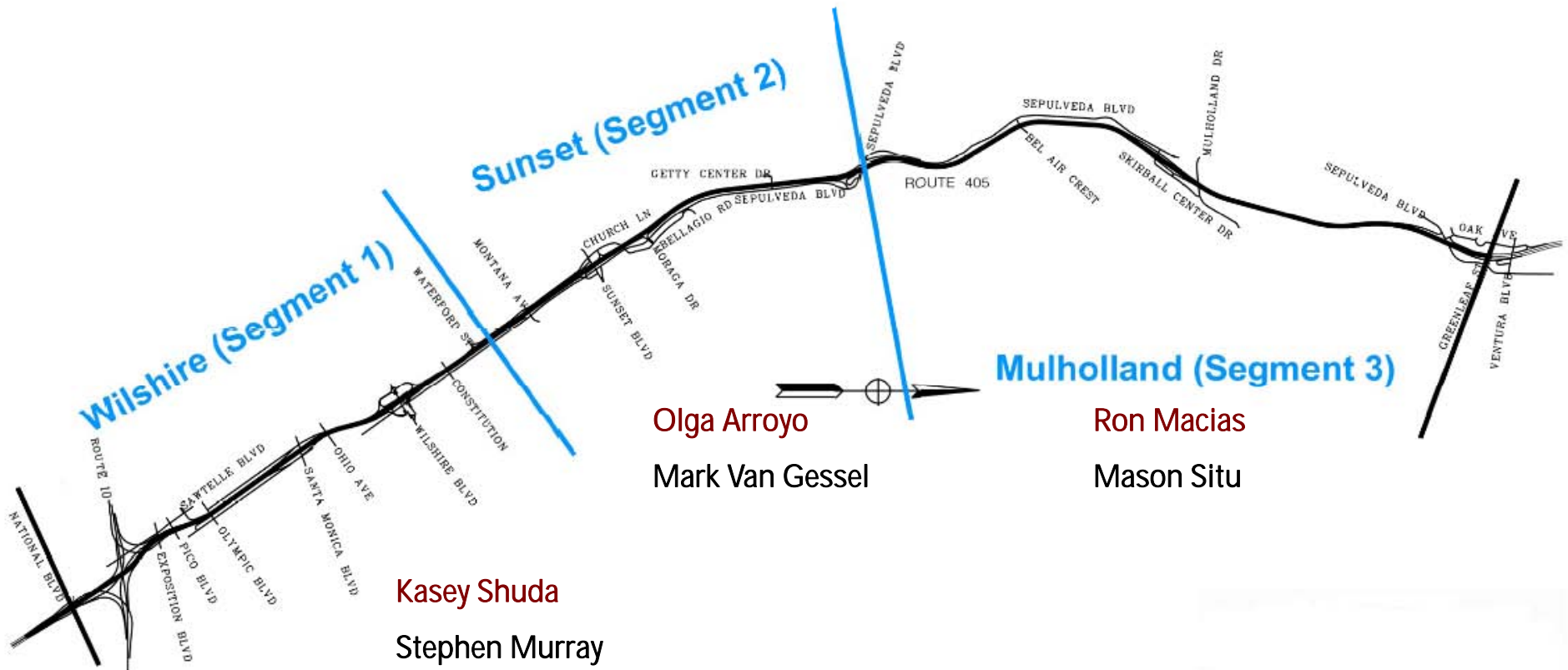
Project Benefits

Specific improvements include:

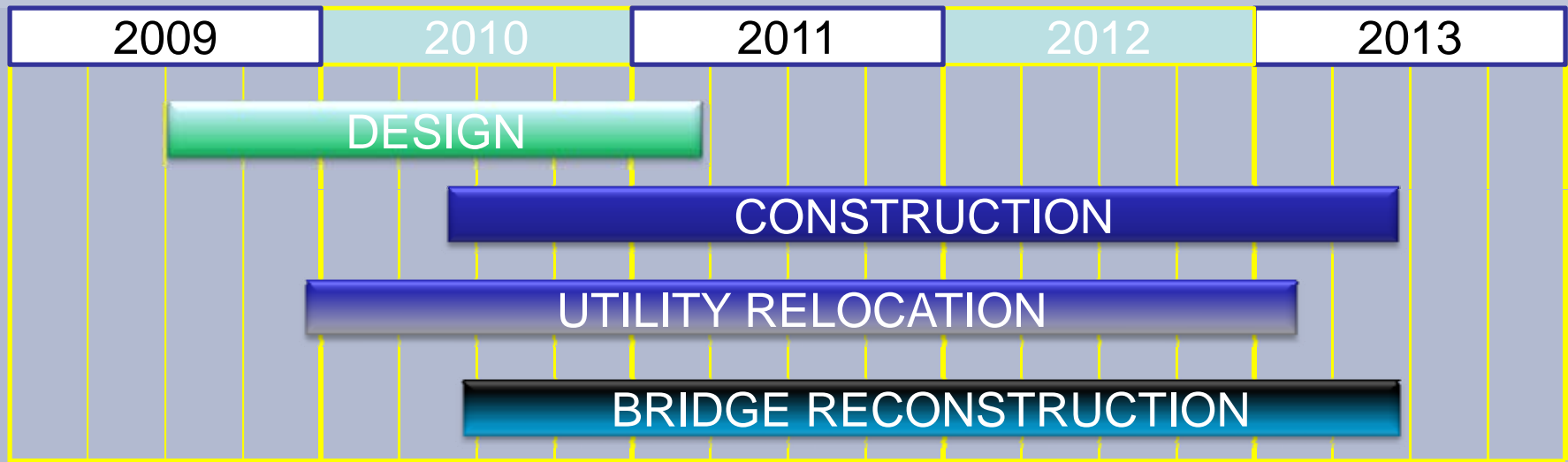
- Rebuilt bridges will be wider (Sunset bridge will have two additional lanes and wider sidewalks).
- Bridges will meet latest seismic standards.
- New on- and off-ramps feature greater capacity, lessening effects on surface streets.
- HOV lane features 20 percent more capacity than general purpose lane.
- Standardized widths on southbound lanes
- Improved level of service for neighboring intersections



Project Approach



Project Schedule



Social Media Outreach

Real-Time Updates

- This week Community Relations sent its 3,100th Twitter posting.
- Last month 13,715 pages were viewed on the project website.
- Our Facebook page currently has 801 likes and 524 followers.
- Nixle has 278 followers.
- Twitter has 1,780 followers.

The screenshot displays a website interface with a blue header and a white content area. The main content is organized into two sections: 'Wilshire Segment (National Bl to Waterford St)' and 'Sunset Segment (Waterford St to Getty/Sepulveda Bl)'. Each section features a table of 'Today's Closures' with columns for the closure description and the date posted (all dated Dec. 6th). To the right of the tables is a navigation menu with links for 'Latest News', 'Meetings', 'Maps', 'Fact Sheets', 'Reports and Info', 'Did You Know?', 'Useful Links', and 'Contact Us'. Below the navigation menu is a 'Daily Updates' section with a yellow background and a warning icon, containing several entries about construction closures and lane reductions with specific dates and times.

Today's Closures	Date Posted
MO-WIL: Full closure of northbound Balboa from Santa Monica to Ohio tonight, 9pm to 6am, for striping.	Dec. 6th
MO-WIL: Full closure of northbound Cotner Av from Santa Monica to Ohio tonight, 9pm to 6am, for striping.	Dec. 6th
MO-WIL: Full closure of Constitution Av from Sepulveda to VA gate tonight, 9pm to 6am, for potholing/paving.	Dec. 6th
MO-WIL: Number 1 lane of eastbound, westbound Santa Monica Bl closed from 9pm to 6am for striping.	Dec. 6th
MO-WIL: Number 5 northbound lane closed from Santa Monica Bl to Wilshire tonight, 10pm to 6am.	Dec. 6th
MO-WIL: Northbound off-ramp to Santa Monica Bl closed from 10pm to 5am for striping.	Dec. 6th
MO-WIL: Sepulveda Bl reduced to one lane each direction tonight, 9pm to 6am, Ohio to Wilshire, for LADWP to underground utilities.	Dec. 6th
MO-WIL: Northbound on-ramp from Santa Monica Bl closed tonight, 8pm to 6am, for setting K-rail.	Dec. 6th

Today's Closures	Date Posted
Wilshire Segment (National Bl to Waterford St)	
Sunset Segment (Waterford St to Getty/Sepulveda Bl)	

- ▶ Latest News
- ▶ Meetings
- ▶ Maps
- ▶ Fact Sheets
- ▶ Reports and Info
- ▶ Did You Know?
- ▶ Useful Links
- ▶ Contact Us

⚠ Daily Updates

Construction closures delivered weekdays around noon

TU-SUN: Sepulveda Bl reduced to one lane each direction from Church Ln to Homedale, 9am to 3pm, for wall construction.
Mon, Dec 06, 12:16 PM PST

MO-MUL: Number 2 southbound lane of Skirball Center Dr closed from 9pm to 6am for overhead cable relocation.
Mon, Dec 06, 11:36 AM PST

MO-MUL: Northbound off-ramp to Skirball Center Dr closed tonight, 7pm to 6am, for overhead cable relocation.
Mon, Dec 06, 11:35 AM PST

MO-MUL: Northbound on-ramp from Skirball Center Dr closed tonight, 7pm to 6am, for overhead cable relocation.
Mon, Dec 06, 11:34 AM PST

MO-MUL: Number 4, 5 northbound lanes closed from Bel Air Crest to Mulholland Dr from 11pm



Ninety-Day Construction Look Ahead



Wilshire Segment

(National to Waterford)

Key Construction Progress

- Pile driving complete at both west Wilshire loops and some retaining walls in place. These will form the abutments to the new Wilshire flyover bridge.



Wilshire Segment

Key Construction Progress (Contd.)

- Pile driving at Santa Monica is complete on both sides of the freeway. These piles will form the foundation for the widened Santa Monica undercrossing.



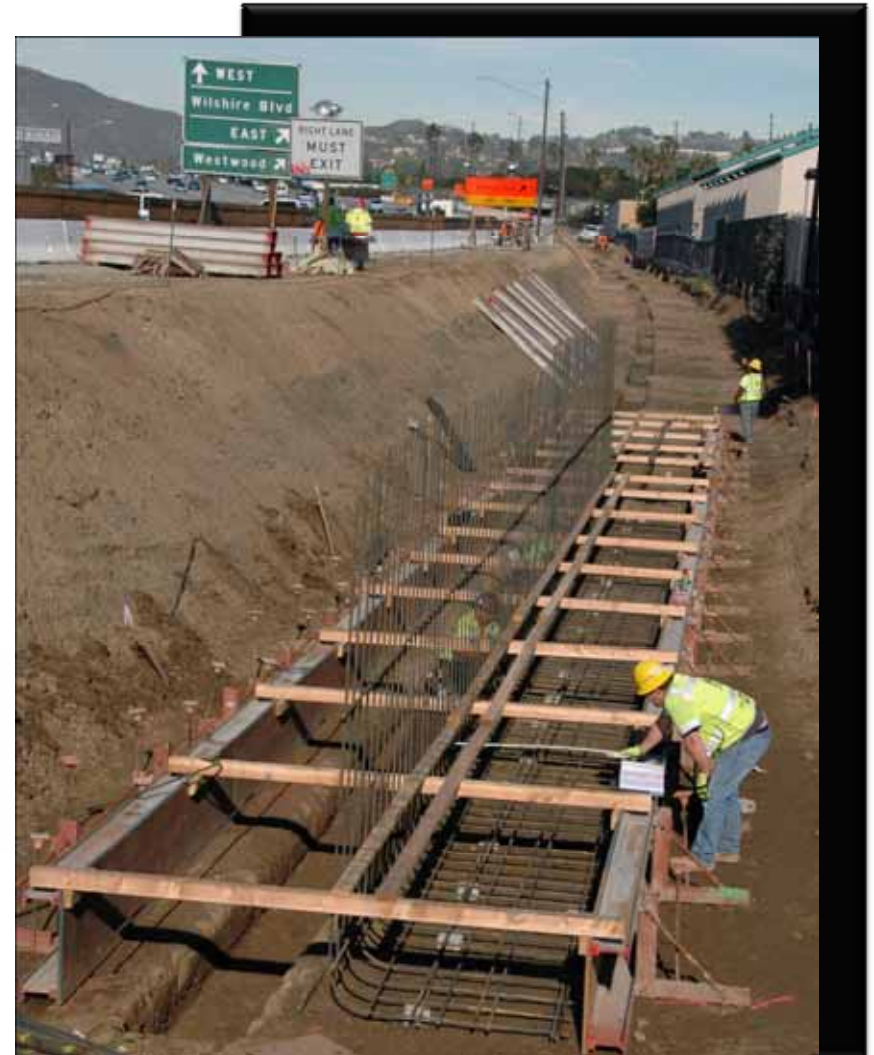
Wilshire Segment

Key Construction Progress (Contd.)



Wilshire Segment

Key Construction Progress (Contd.)



Wilshire Segment

Key Construction Progress (Contd.)

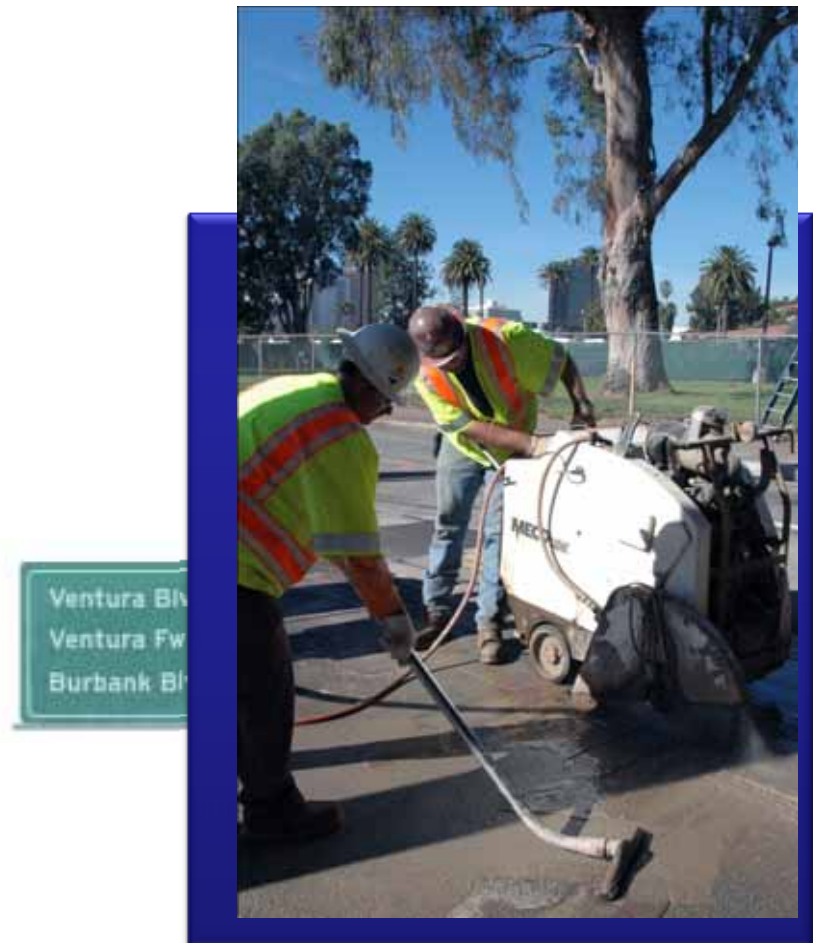
- Sound wall construction is underway north of Constitution Av.



Wilshire Segment

Key Construction Progress (Contd.)

- Utility relocation at Ohio has begun. Three of five utilities have been relocated to accommodate a wider I-405; several overhead utilities had to be raised and repositioned.



Wilshire Segment

Top 5 Upcoming Activities

- Ohio Av utilities relocated; bridge will be demolished and then widened.
- Santa Monica bridge will be demolished; ramps and soundwall will be constructed.



Wilshire Segment

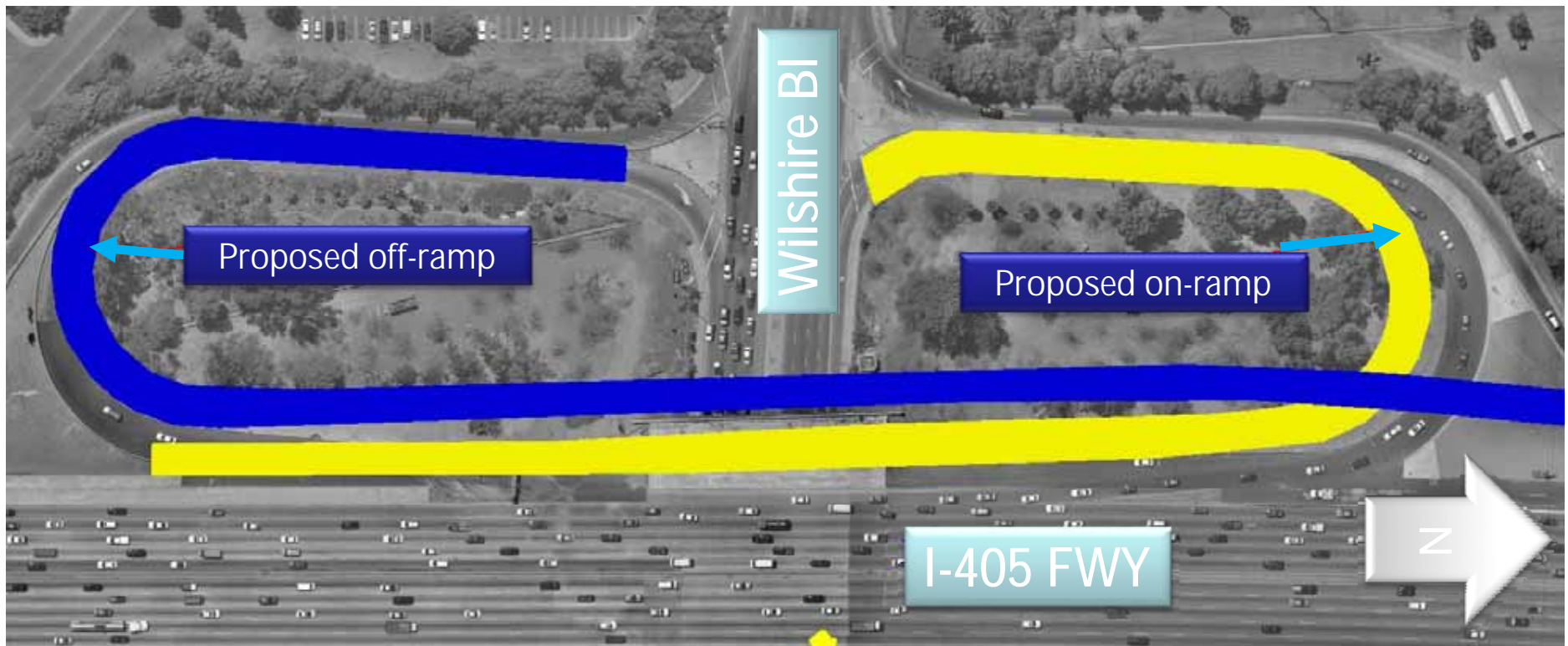
Top 5 Upcoming Activities

- Constitution Av bridge will be demolished; piles will be driven, then bridge will be widened.
- SB I-405 at Wilshire Bl will see forming of abutment and other bridge work.
- Beloit Av sound wall will be demolished and reconstructed to allow for widening of southbound lanes.



Wilshire Segment

Proposed Wilshire Ramps



Sunset Segment

(Waterford to Sepulveda)

Key Construction Progress

- Pile driving at Sunset Bridge is nearly complete. Pile driving is one of the reconstruction activities for the southern half of the Sunset Bridge. These piles will form the abutments of the new Sunset Bridge.



Sunset Segment

Key Construction Progress (Contd.)



Sunset Segment

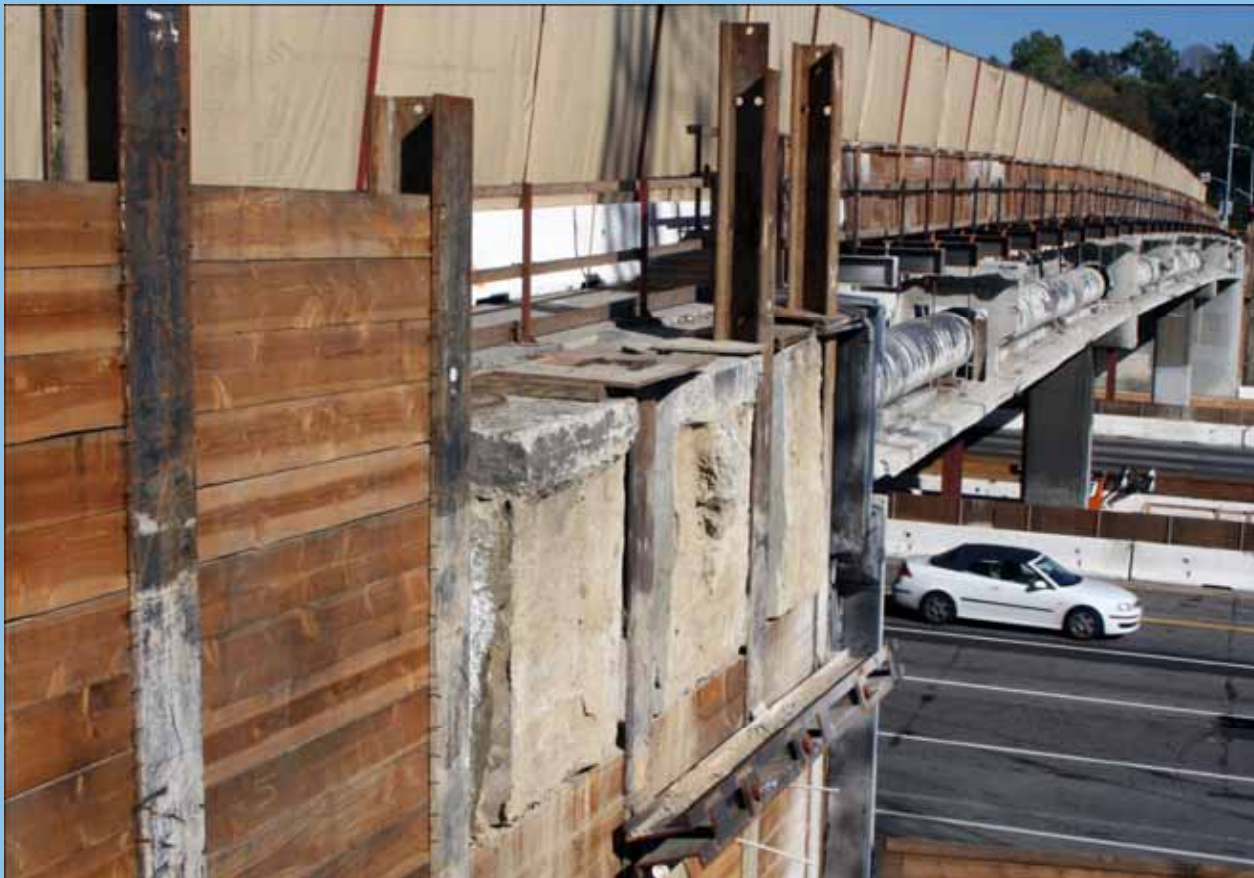
Key Construction Progress (Contd.)



Sunset Segment

(Waterford to Sepulveda)

Key Construction Progress (Contd.)



Sunset Segment

Key Construction Progress

- The Church Ln/Sunset BI intersection has been reopened to traffic because DWP has completed its work for the LA-29 project on Church Ln. Reopening Church Ln enables the I-405 team to move forward with work at the Montana undercrossing.

Sunset Segment

Key Construction Progress

- A portion of the Montana Av Bridge is being demolished. This demo is the first step in widening the Montana Av undercrossing.



Sunset Segment

Key Construction Progress (Contd.)



Sunset Segment

Key Construction Progress

- Retaining wall 1720 is under construction. Currently piles are being set. All piles should be set by the end of 2010. This wall will stabilize the hillside and allow for the realignment of Sepulveda BI in this area.



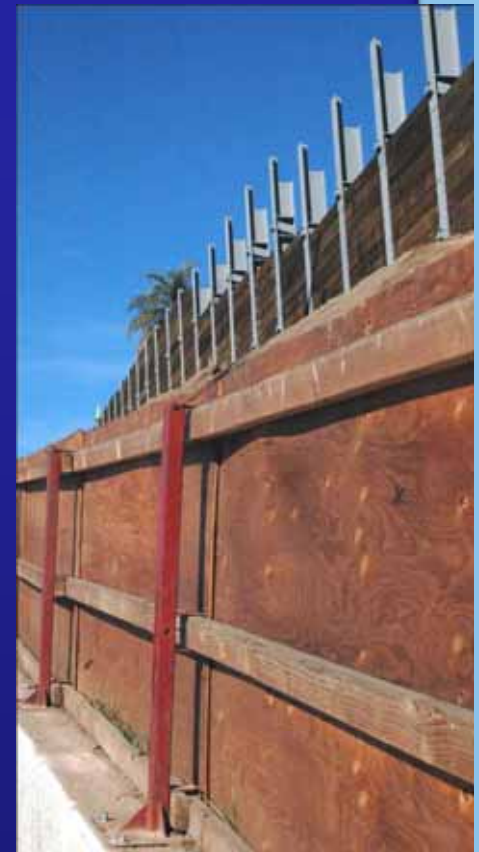
Sunset Segment

Key Construction Progress (Contd.)



Sunset Segment

Key Construction Progress (Contd.)



Sunset Segment

Top 5 Upcoming Activities

- Montana Bridge footing will be constructed with associated utility work.
- Walls 1720/1730 (Sepulveda/Homedale) continue construction.

Sunset Segment

Top 5 Upcoming Activities

- Sunset Bridge columns will be constructed.
- Sunset on-ramp footing will be constructed.
- Utility work will continue on Sepulveda Bl.

Completed Sunset Bridge



Sunset Segment—Proposed Landscaping

Location	Sepulveda BI	Jurisdiction	Landscape	Type
Wilshire to Constitution	Westside	State	Yes	Vines
	Eastside	VA	No changes	No changes
Constitution to Montana	Westside	City of L.A.	Yes	Vines
	Eastside	City of L.A.	No changes	No changes
	Montana off ramp	State	Yes	Vines, trees, shrubs
Montana to Sunset	Westside	City of L.A.	Yes	Vines
	Eastside (Montana to Bronwood)	City of L.A.	To be determined	Dependent on utility redesign
	Eastside (Bronwood to Sepulveda Way)	City of L.A.	Yes	Trees

Landscape Adjustments

- Vines
 - Vines will be planted on west side of Sepulveda Bl, from Wilshire to Church/Ovada.
 - I-405 Project will plant vines and provide irrigation.
- Sidewalk trees
 - Trees will be planted on east side of Sepulveda, from Montana to Sunset.
 - I-405 Project will work with City and utility owners to determine if it is possible to adjust spacing and location of underground utilities to allow for tree planting.
 - Proposed tree spacing on sidewalk is being determined.

Final EIR/EIS Compliance

Tree Replacement Formulas		
	Non-natives	Naturally Occurring Natives
State ROW	1:1 (ratio)	5:1 (ratio)
City of L.A.	250 (total)	400 (total)

Final EIR/EIS Compliance

Tree Replacement Considerations

- Available space
- No subsurface utility conflicts
- Coordination between Caltrans District Landscape and Architect District Biologist
- At the discretion of the agency holding jurisdiction
 - Caltrans – state ROW
 - City of L.A. – city ROW



Final EIR/EIS Compliance

Tree Replacement Locations

1. In area where original tree was removed
2. In project area
3. Santa Monica Mountains Conservancy
4. City of Los Angeles Bureau of Street Services



Tree Replacement

- Number of trees removed (all areas) – approximately 1,850-1,900
- Number of trees replanted (all areas) – approximately 3,650-4,000
- Number of trees replanted in project area – approximately 1,450



Mulholland Segment (Sepulveda to Ventura)

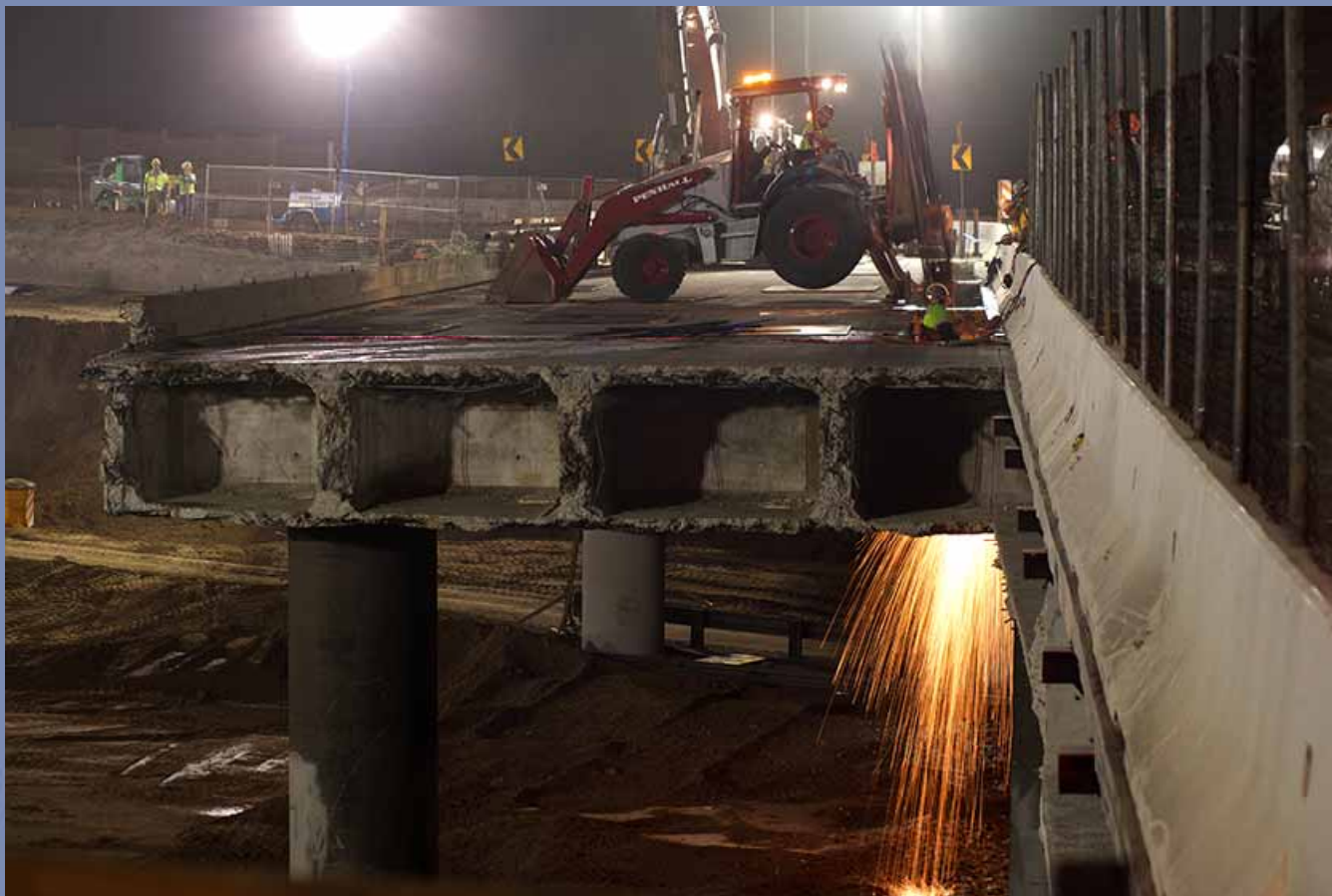
Key Construction Progress

- The northern half of the Skirball Bridge was demolished in October. Demolition activities were completed in three, instead of five nights.



Mulholland Segment

Key Construction Progress (Contd.)



Mulholland Segment

Key Construction Progress (Contd.)



Mulholland Segment

Completed Milestones (Contd.)



Mulholland Segment

Key Construction Progress (Contd.)



Mulholland Segment

Key Construction Progress (Contd.)



Mulholland Segment

Key Construction Progress (Contd.)



Mulholland Segment

Key Construction Progress

- Massive soil nail walls are under construction near the Getty Trailhead, on the east side of the I-405. These walls will retain the hillside so an improved NB Getty on-ramp can be constructed.



Mulholland Segment

Key Construction Progress (Contd.)



Mulholland Segment

Key Construction Progress (Contd.)

- Crushers operate regularly in several locations throughout the project. The crushers grind old concrete, asphalt and other materials so they can be reused on the project.
- The I-405 project will be able to keep 300,000 tons of material out of landfills by using the crushers to recycle.



Mulholland Segment

Mulholland Bridge Update

- In September 2010, I-405 staff announced to the CAC that the project would investigate realigning the Mulholland Bridge.
- The purpose of the redesign effort is to determine a new bridge alignment that would allow the old bridge to stay in place until the new bridge is complete, reducing traffic impacts on Mulholland Dr and on the I-405 freeway.



Mulholland Segment

Mulholland Bridge Update

- Metro, Caltrans and LADOT are currently evaluating the feasibility of potential bridge alignments.
- I-405 will continue to update the CAC and the community as this evaluation process continues.



Mulholland Segment

Top Upcoming Activities

- Retaining wall construction in Sherman Oaks
- Construction at Bel Air Crest
- Skirball Bridge reconstruction
- Analysis of realignment of Mulholland Bridge

For More Information

Project Hotline: (213) 922-3665

I405@metro.net

www.metro.net/405

www.facebook.com/405project

Twitter: http://twitter.com/I_405

Nixle: nixle.com

