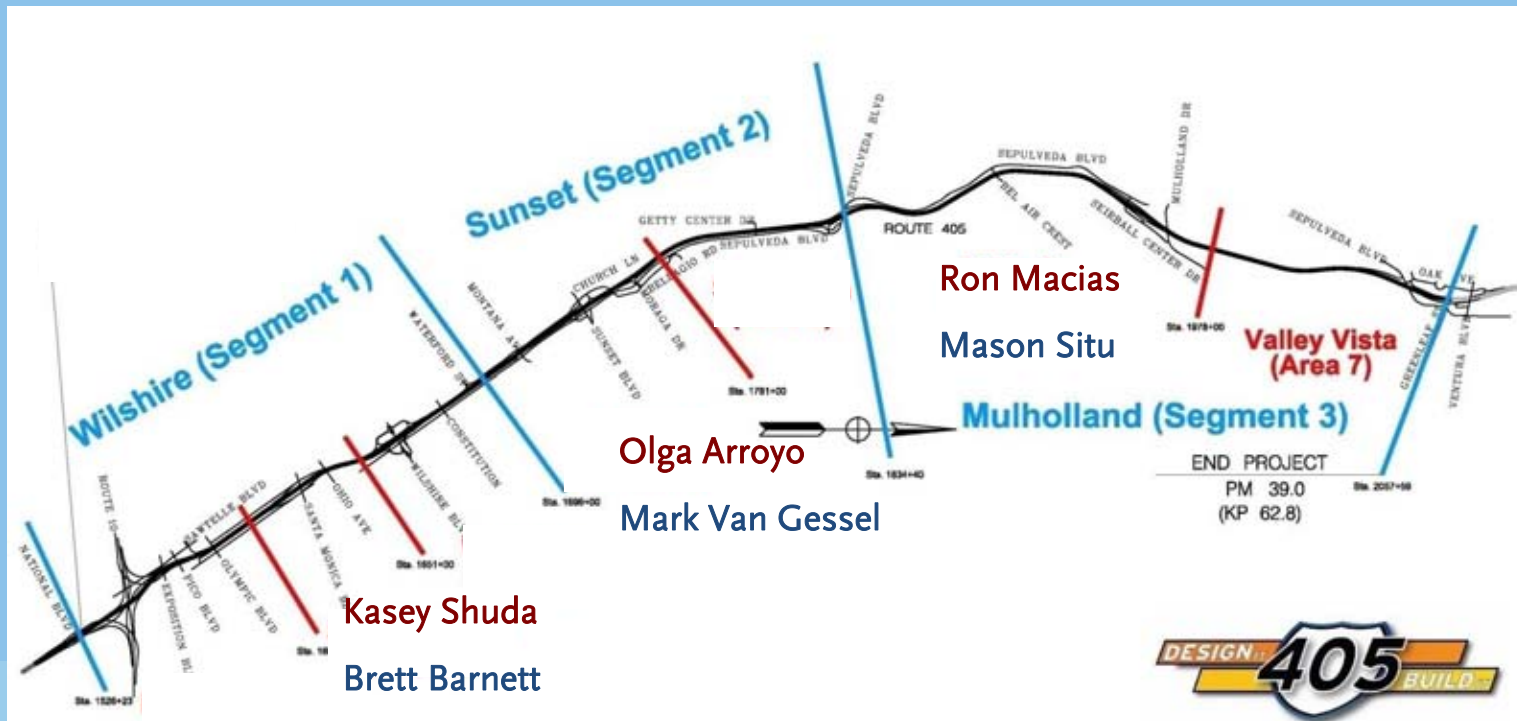


# I-405 Sepulveda Pass Widening Project

Community Advisory Committee Meeting  
March 25, 2010



# Project Approach



Ron Macias

Mason Situ

Olga Arroyo

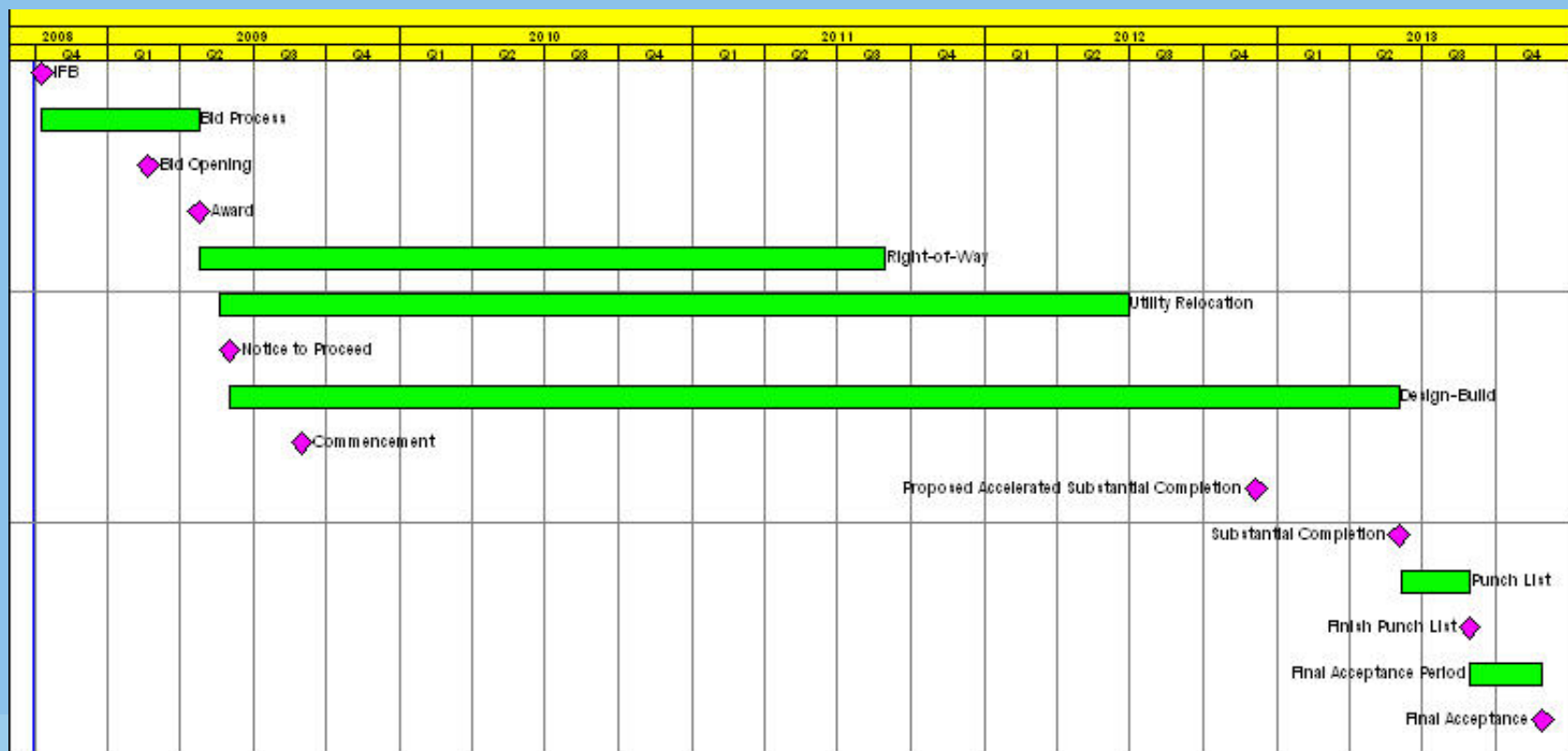
Mark Van Gessel

Kasey Shuda

Brett Barnett



# Design/Build Project Schedule





# Mainline Look Ahead

Activity	Closures/Notes	Work Hours	Projected Date
Striping (reconfigure lanes) <i>except S/B between 101 and The Getty Center</i>	<ul style="list-style-type: none"> <li>• Full segmented freeway closures</li> <li>• Traffic detours</li> <li>• Lane reductions</li> </ul>	Night	Late March – early April
Saw cut and grinding	<ul style="list-style-type: none"> <li>• Lane reductions</li> <li>• Traffic detours</li> </ul>	Night	Late March
K rail placement (in sections)	<ul style="list-style-type: none"> <li>• Lane reductions</li> <li>• Ramp closures</li> </ul>	Night	March 22

*Wilshire and Sunset ramps will not be closed at the same time.*



# Full Freeway Closure Schedule

Activity	Segment	Date *	Duration	Description
K-rail Placement – NB partial freeway closures	I-10 to Sepulveda/Getty Ramps	3/22	1 Week	Partial freeway closure
Freeway Restriping – SB full freeway closures	Santa Monica Blvd. to National Blvd.	3/22	3 Nights	Full freeway closure: detour in place
Freeway Restriping – SB full freeway closures	Sunset Blvd. to Santa Monica Blvd.	3/25	2 Nights	Full freeway closure: detour in place
Freeway Restriping – SB partial freeway closures	Skirball Center Dr. to Wilshire Blvd.	3/29	2 Nights	HOV, 1, 2
Freeway Restriping – SB full freeway closures	U.S. 101 to Getty/Sepulveda Ramps	3/31	3 Nights	Full freeway closure: detour in place



\* Subject to change

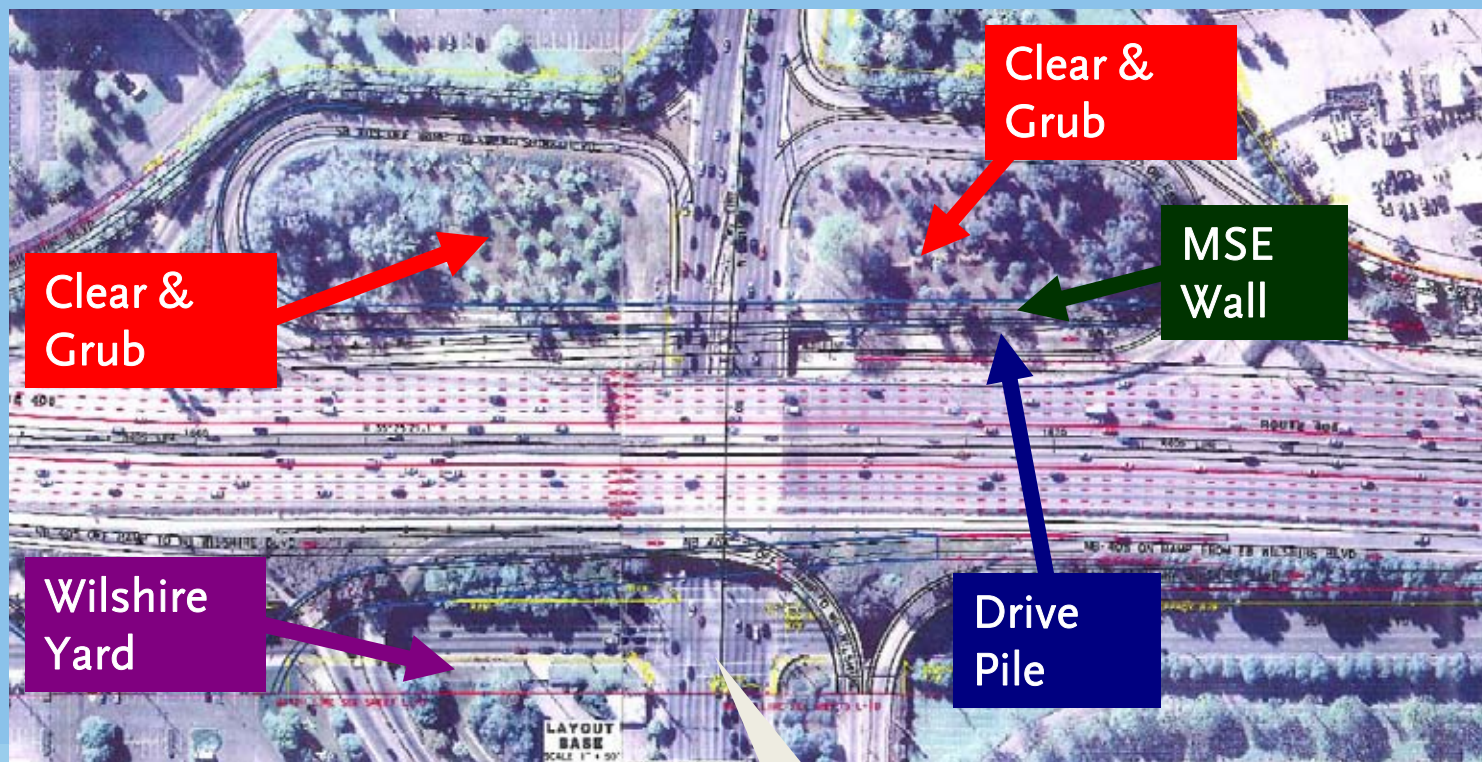


# Wilshire Segment Look Ahead (National to Waterford)

Activity	Closures/Notes	Work Hours	Projected Date
Development of Cotner Yard		Day	Through April
Development of Wilshire Yard		Day	Through mid-April
Move in to Wilshire Yard		Day	April 12
Clear Wilshire on/off ramps (west side)		Day	April 5
Build MSE walls SB I-405, north of Wilshire Blvd.	Possible night work for dirt hauling	Day	End of April
Drive steel pile SB I-405, north of Wilshire Blvd.		Day	Beginning May
VA Sewer Relocation	Lane closures on Bonsall Road (VA property)	Day	Early April



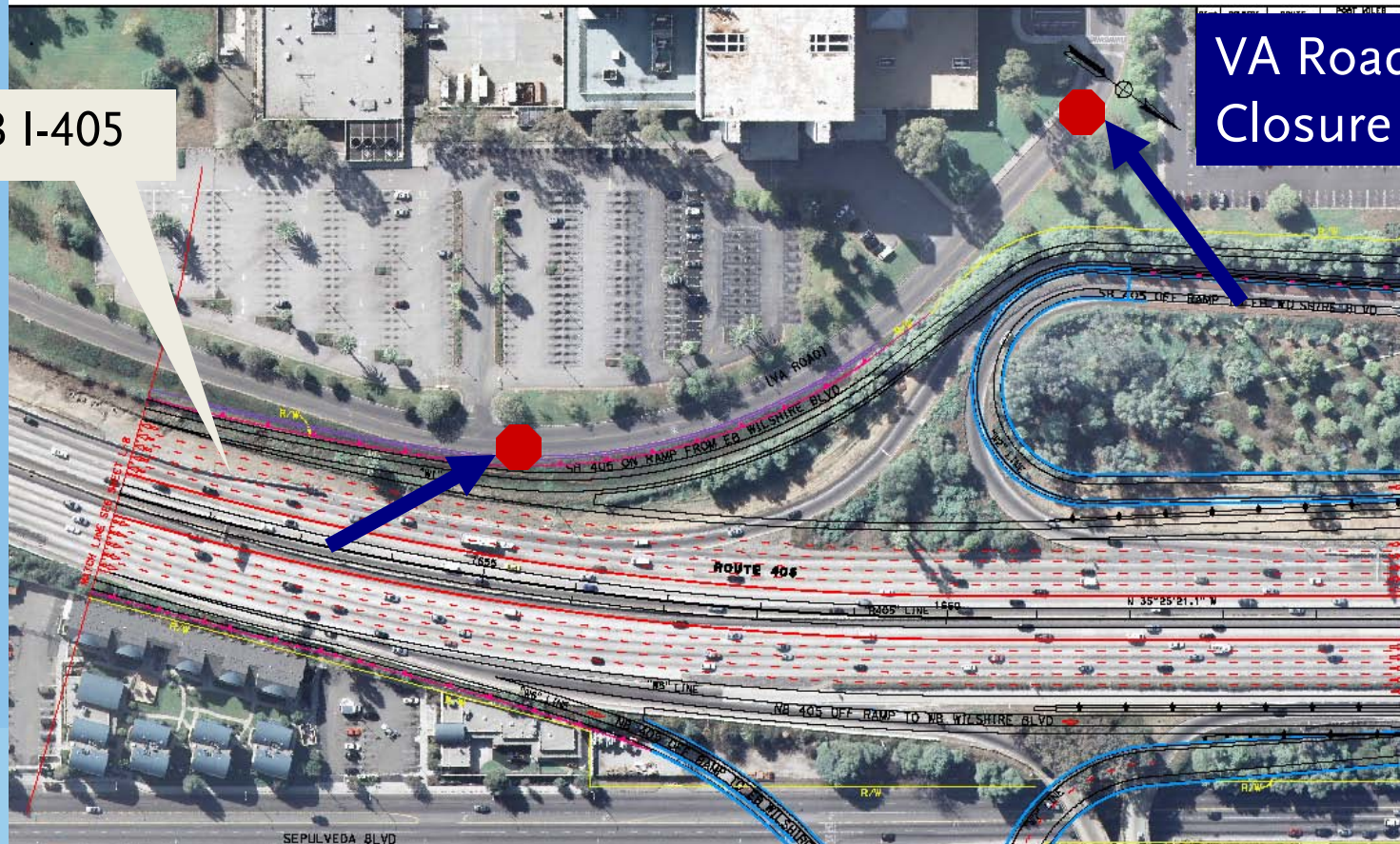
# Wilshire Segment Map



Wilshire  
Blvd.



# VA Sewer Relocation



SB I-405

VA Road Closure



# Sunset Segment Look Ahead (Waterford to Sepulveda)

Location	Activity	Closures/Notes	Work Hours	Projected Date
Sepulveda between Montana and Sunset	Undergrounding utilities	NB closure off-peak hours. Closure of Sepulveda intersection at Homedale, Bronwood, Alleyway.	Day/Night	March through May
	Tree removal (empty lot)			Late March
	Clear hillside (shrubs) Phase I	Lane reduction	Day	April
	Build access		Day	April
	Clear hillside (trees) Phase II	Lane reduction	Day	May
	Begin retaining and sound walls		Day/Night	May



## Sunset Segment Look Ahead (Continued)

Location	Activity	Closures/Notes	Work Hours	Projected Date
Sunset Bridge	Clear on/off ramps	Lane closures	Day/Night	Early April
	Realign traffic	Traffic reconfiguration (2 lanes each direction); lane closures	Night	April
	Demo 300 feet of sound wall, east side Sunset Blvd., north of Sunset		Day	Early April



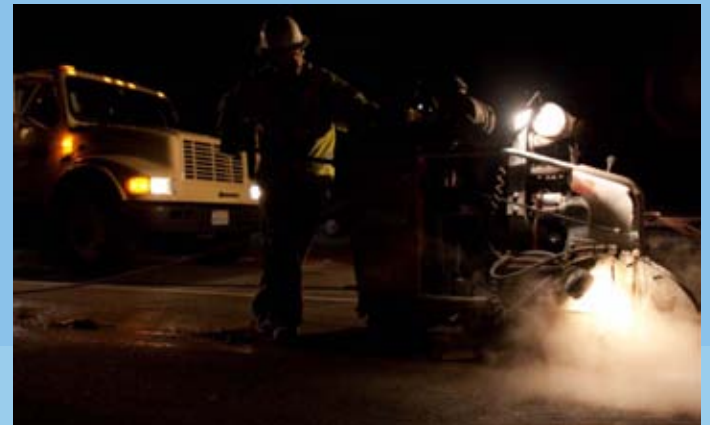
## Sunset Segment Look Ahead (Continued)

Location	Activity	Closures/Notes	Work Hours	Projected Date
	Begin Sunset bridge demolition	Traffic delays; lane reduction	Day/Night	Mid/Late April
Sunset Bridge	Clear and grub (Montana to Church)		Day	Early April
	Yard Development		Day	March –April
Church Ln. at Sepulveda	Widen Street	Weekend closure	Day/Night	Late March/Early April

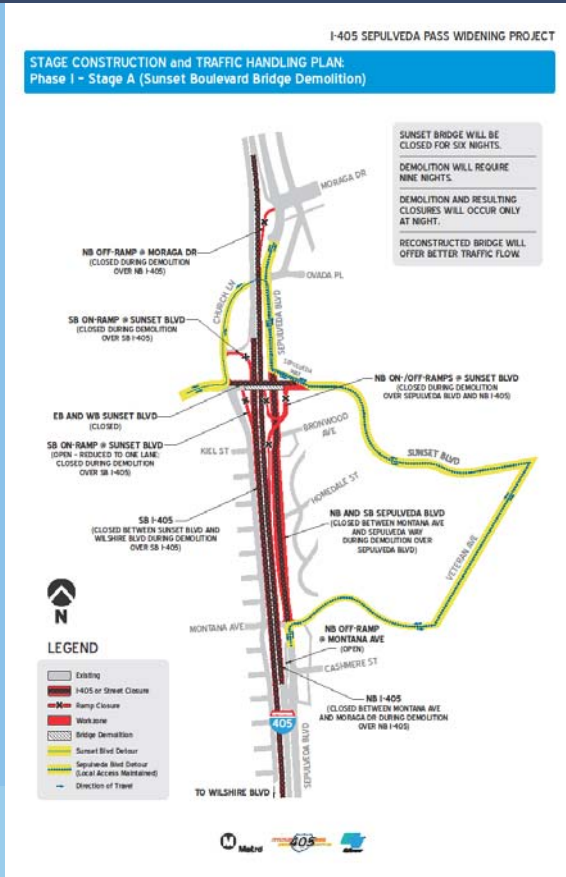


# Sunset Segment Look Ahead (Continued)

Location	Activity	Closures/Notes	Work Hours	Projected Date
Church Ln./Sepulveda	Add an additional lane at Church Ln./Sepulveda	Full weekend closure	Day/Night	Late March, early April
Sepulveda/Getty Ct. Drive	Yard Development		Day/Night	On going



# Sample Detour/Work Plan Map



# Mulholland Segment Look Ahead (Sepulveda to 101 Highway)

Area	Activity	Closures/Notes	Work Hours	Start Date
Mission Land Fill	Site office set up	Working on setting up the field office now, will move-in in early April.	Day	March
Getty Trail Head	Clear and grub, crusher pad setup	Existing parking lot and hiking trail will be closed.	Day	April
	Retaining walls construction	No resident within impacted perimeter.	Day and night	April
Sherman Oaks (East of I-405)	Pre-construction survey	Will conduct a survey on the houses in the vicinity of the wall construction area	Day	Early April
	Clear and grub	Construction trucks in/out via mainline.	Day	Mid-April
Sherman Oaks (West of I-405)	Pre-construction survey	Will conduct a survey on the houses in the vicinity of the wall construction area	Day	Late March
	Clear and grub	Construction trucks in/out via mainline and only small vehicle use local residential streets	Day	Mid-April



# Mulholland Segment Look Ahead (Sepulveda to 101 Highway)

Area	Activity	Closures/Notes	Work Hours	Projected Start
Valley Vista	Pre-construction survey	Will conduct a survey on houses in vicinity of wall construction area	Day	Early April
	House demo preparation	Access to the work zone area will entail access from local street	Day	April
	House demolition	Access to the work zone area will entail access from local street	Day	Early May
	Clear and grub	Construction trucks in/out via mainline	Day	May
Skirball Bridge	Striping and K-rail placement	Will close north half of the bridge, re-stripe south half to maintain one lane for each direction	Day and night	May
	Bridge demolition	During the demo, night closure for both bridge and freeway	Day and night	June



# 1720/1730 Wall Aesthetics

## Description of the wall

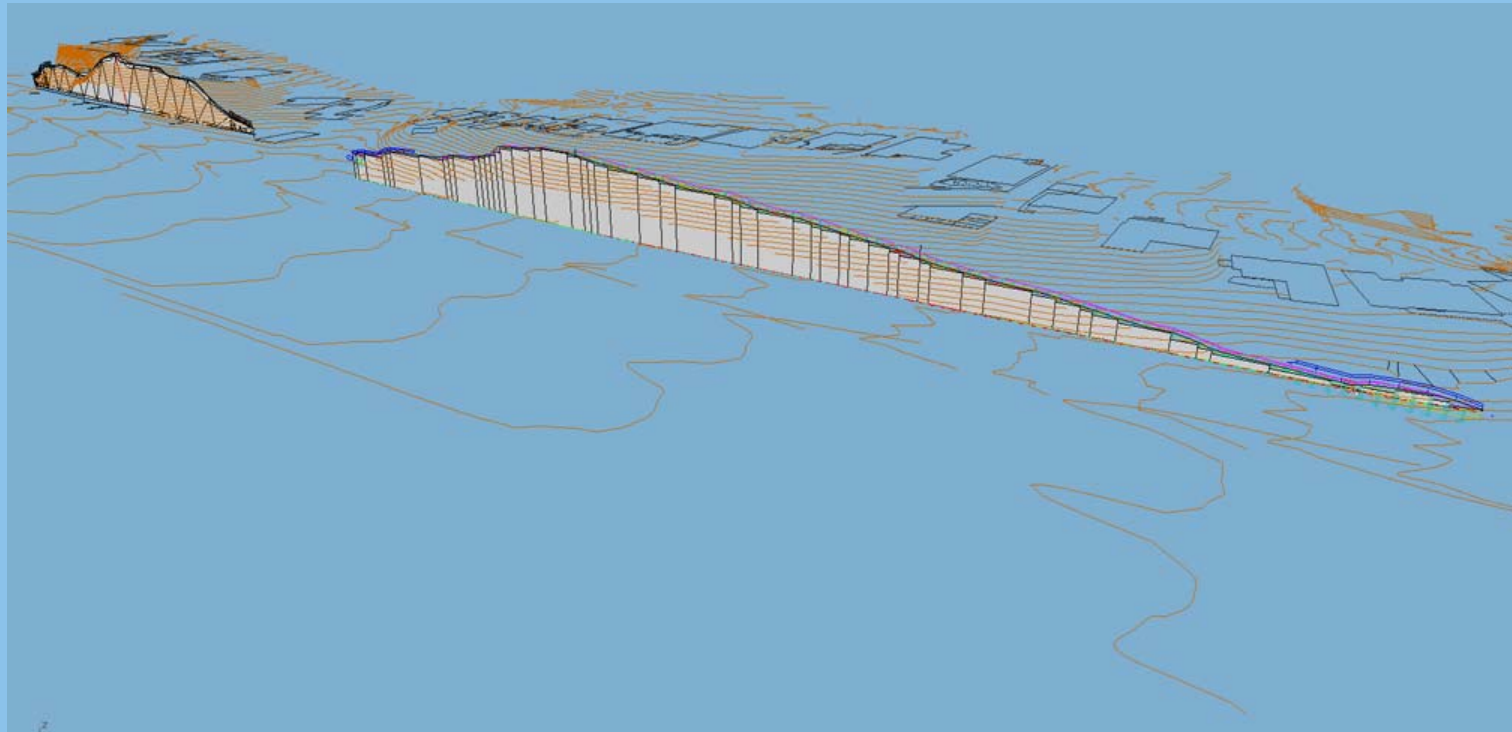
- 1720 is approximately 500-feet long; 1730 is approximately 700-feet long
- Both vary in height from 20 to 45 feet, the greatest height in the center
- Walls run along east side of Sepulveda Blvd., between Sunset Blvd. and Montana Ave.

## Process to this point

- CAC provides comments
- Artists Open House in mid-April
- Refined concept presented to CAC at April meeting; Final aesthetics presentation at May meeting
- Aesthetic concept shared with CAC



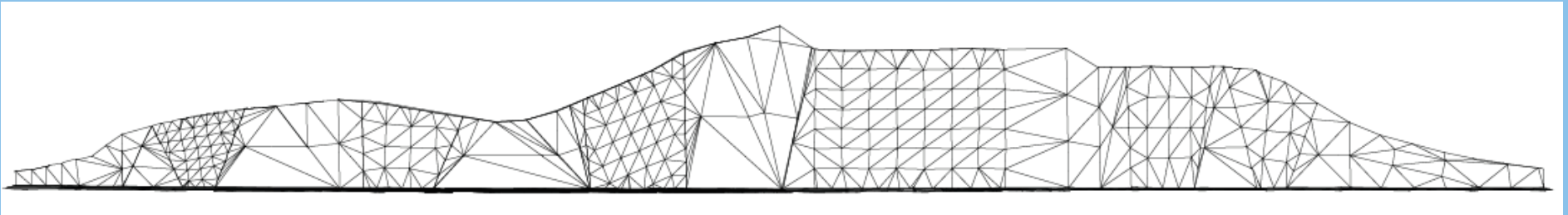
# 1720/1730 Wall Aesthetics



Early 3D Visualizations



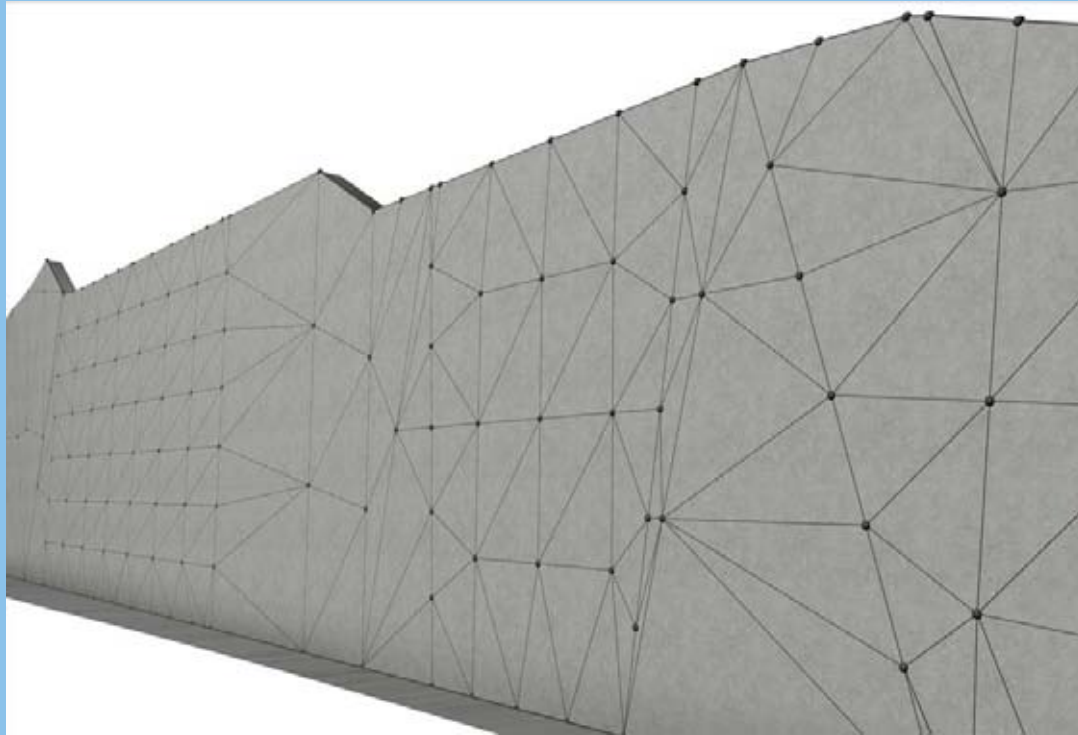
# 1720/1730 Wall Aesthetics



Tailored Geometry

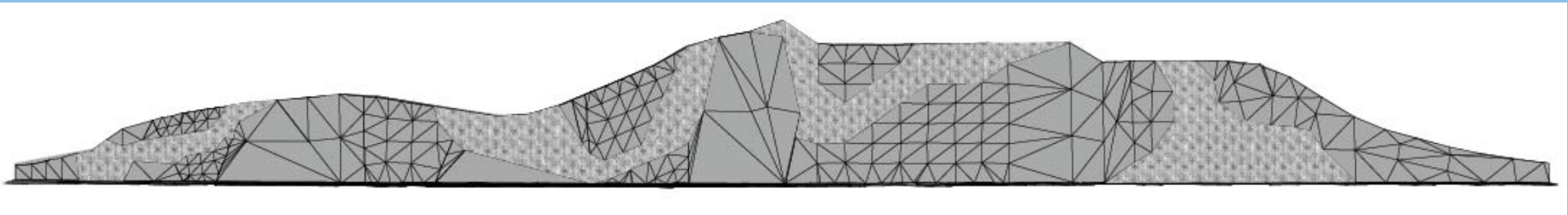


# 1720/1730 Wall Aesthetics



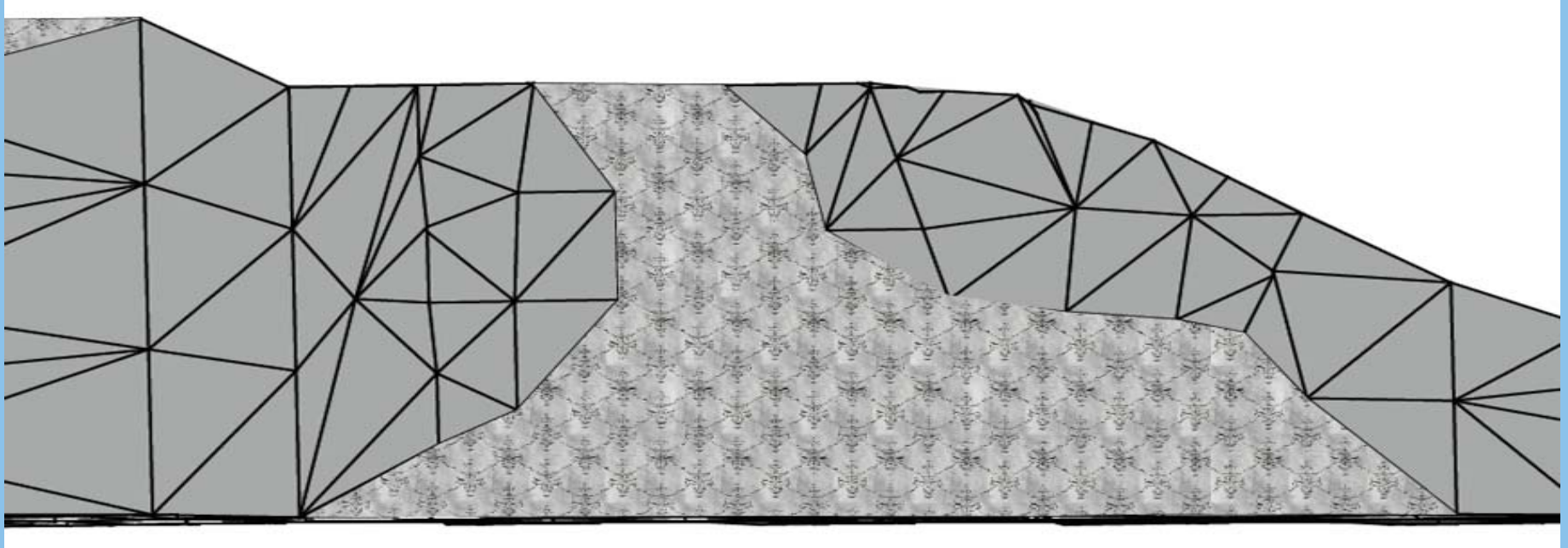
Wall 1730 (Etched Pattern)

# 1720/1730 Wall Aesthetics



Wall 1730 (Pattern with Tiling)

# 1720/1730 Wall Aesthetics



WALL 1730 (Pattern with Tiling)

# 1720/1730 Wall Aesthetics



Pattern

# 1720/1730 Wall Aesthetics



Pattern

# 1720/1730 Wall Aesthetics



Pattern Molding and Casting

# 1720/1730 Wall Aesthetics



Pattern Molding and Casting



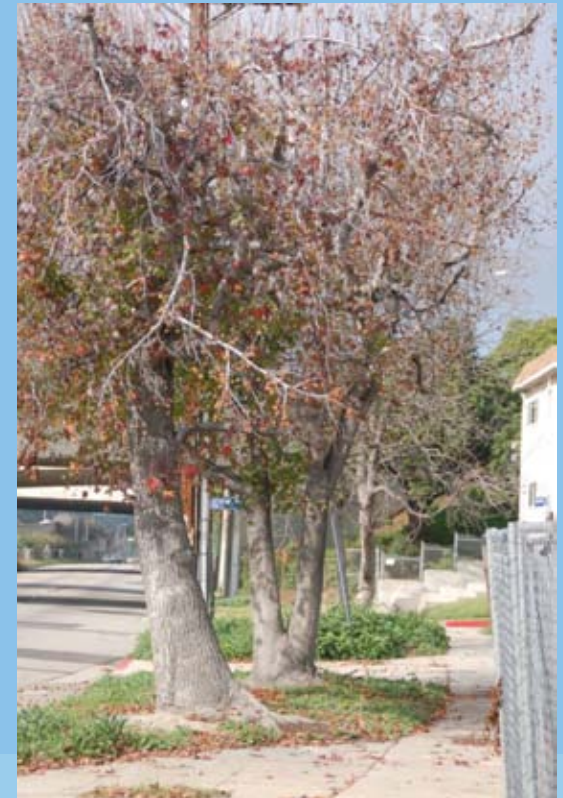
# 1720/1730 Wall Aesthetics

Please send your comments to Metro Community Relations  
Tel: 213.922.3665



# Tree Removal and Protection Process

- Preserve as many trees as possible
- Comprehensive arborist's tree survey
- Removal and protection plan
- 5:1 mitigation of native trees



# Social Media Activities



**I-405 Sepulveda Pass Widening Project** [Become a Fan](#)

Wall Info Photos Links Events +

What's on your mind?

Attach: Everyone [Share](#)

I-405 Sepulveda Pass Widening Project + Fans [I-405 Sepulveda Pass Widening Project](#)

Just Fans [Settings](#)

**I-405 Sepulveda Pass Widening Project**

**Message Signage Devices**

March 12 at 2:30pm · Comment · Like · Share

**I-405 Sepulveda Pass Widening Project** Good news for fans and participants in the L.A. Marathon on Sunday, March 21. There will be no construction for the I-405 Sepulveda Pass Widening Project during the race.

Other project updates are available at <http://www.metro.net/projects/I-405/>

Metro

Edit Page  
Promote with an Ad  
Suggest to Friends

The I-405 Sepulveda Pass Widening Project will add a 10-mile HOV lane and improve supporting infrastructure such as ramps, bridges and sound walls on the San Diego Fwy.

This project brought to you by

Facebook page provides access to:

- Project website
- Construction notices
- Progress photographs
- Project profiles

[www.facebook.com/405project](http://www.facebook.com/405project)

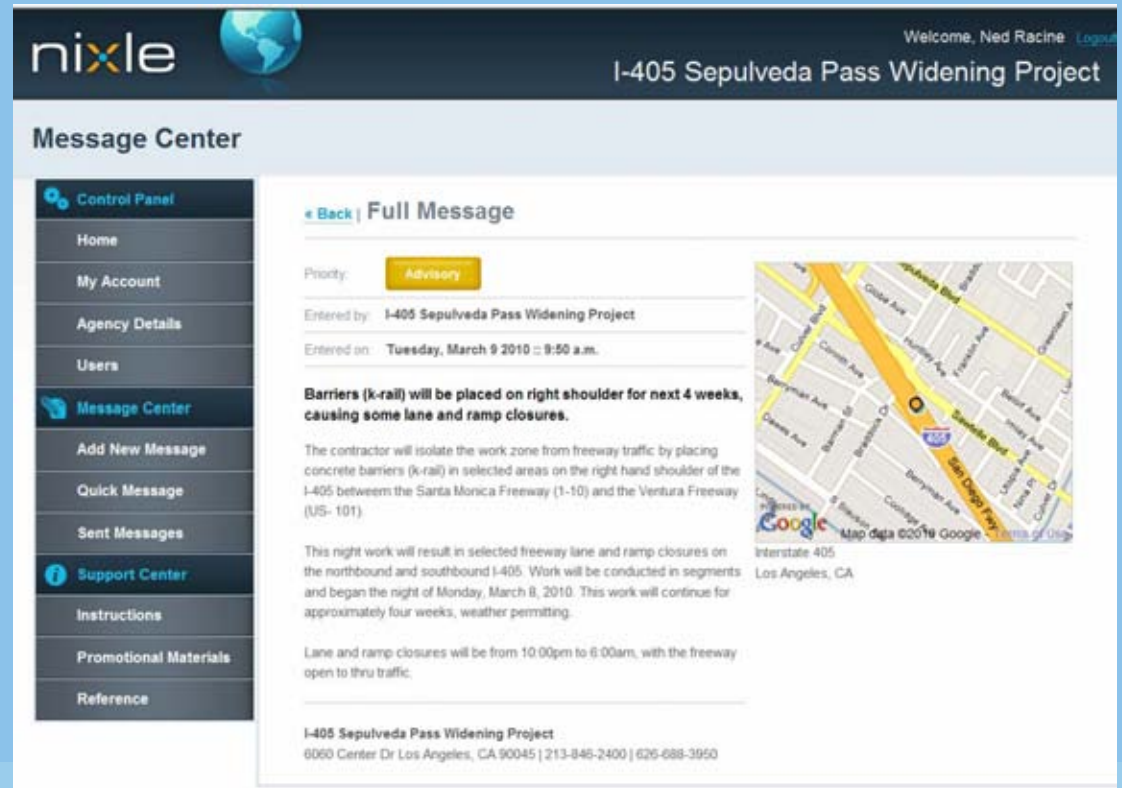


# Social Media Activities

Website visitors are over 17,000 per month.

Facebook visitors have risen from 89 to 123.

Notice of Facebook address and Nixle sign-up procedures sent to e-mail list last week.



The screenshot shows the Nixle website interface. At the top, the Nixle logo is on the left, and the user is logged in as "Welcome, Ned Racine". The page title is "I-405 Sepulveda Pass Widening Project". Below the title is a "Message Center" section. On the left is a navigation menu with options: Control Panel, Home, My Account, Agency Details, Users, Message Center (highlighted), Add New Message, Quick Message, Sent Messages, Support Center, Instructions, Promotional Materials, and Reference. The main content area shows a "Full Message" with the following details:

- Priority: Advisory
- Entered by: I-405 Sepulveda Pass Widening Project
- Entered on: Tuesday, March 9 2010 @ 9:50 a.m.

**Barriers (k-rail) will be placed on right shoulder for next 4 weeks, causing some lane and ramp closures.**

The contractor will isolate the work zone from freeway traffic by placing concrete barriers (k-rail) in selected areas on the right hand shoulder of the I-405 between the Santa Monica Freeway (1-10) and the Ventura Freeway (US-101).

This night work will result in selected freeway lane and ramp closures on the northbound and southbound I-405. Work will be conducted in segments and began the night of Monday, March 8, 2010. This work will continue for approximately four weeks, weather permitting.

Lane and ramp closures will be from 10:00pm to 6:00am, with the freeway open to thru traffic.

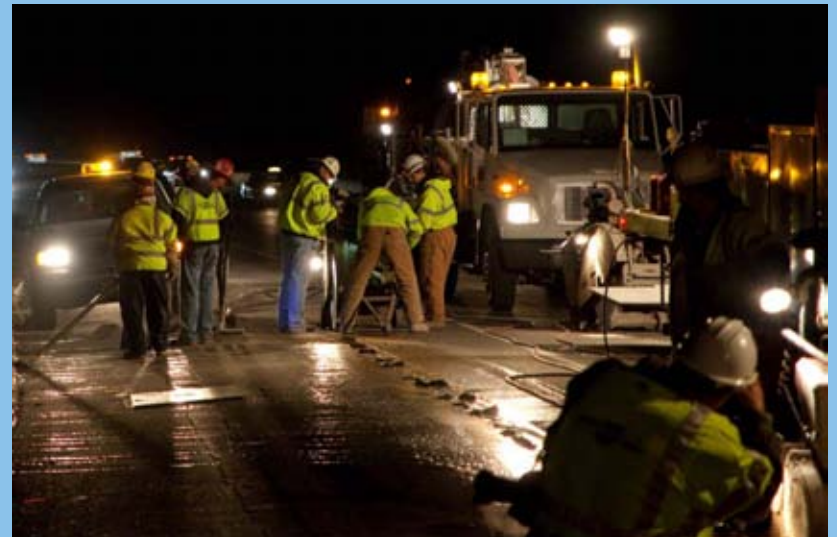
**I-405 Sepulveda Pass Widening Project**  
6060 Center Dr Los Angeles, CA 90045 | 213-846-2400 | 626-688-3950

On the right side of the message, there is a map showing the project location on Interstate 405 in Los Angeles, CA, with a yellow highlighted section between Santa Monica Avenue and Ventura Avenue.



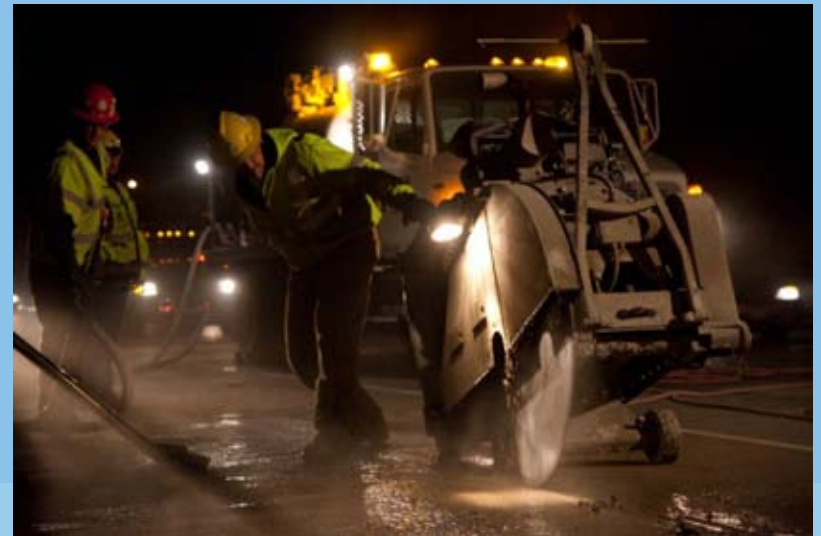
# Bus Operations Coordination

- Hosted coordination meetings with Metro Bus Operations and LADOT Commuter Express
- Construction provides 3-week look ahead schedule providing Bus Operations an opportunity to create service updates
- Provides schedule of proposed closures



## Bus Operations Coordination (Continued)

- A link has been added to [metro.net/405](http://metro.net/405) connecting the public to service updates in the event construction affects bus schedules.
- Press releases are issued when construction may cause service delays due to construction.



# Bus Operations Coordination (Continued)

## Briefings

- San Fernando Valley Governance Council
- South Bay Governance Council
- Westside/Central Governance Council

## Notification and Input Process

- Bus stops relocation
- Bus route alteration



**The End**

# Metro Community Relations

Project Hotline: (213) 922-3665

I405@metro.net

[www.metro.net/405](http://www.metro.net/405)

[www.facebook.com/405project](http://www.facebook.com/405project)

Twitter: [http://twitter.com/I\\_405](http://twitter.com/I_405)

Nixle: [nixle.com](http://nixle.com)

