

# I-405 Sepulveda Pass Widening Project

Community Advisory Committee Meeting

June 24, 2010



# MWD LA-29 Project



Drilling to install beams for shoring to support excavation at Sunset Bl and Church Ln



# MWD LA-29 Project

Installing 27-foot-long beams for shoring in pre-drilled holes at Sunset Bl and Church Ln



# MWD LA-29 Project

Beam and plate shoring to support 30-foot by 30-foot by 12-foot-deep excavation



# MWD LA-29 Project



Exposing in-service 34-inch-diameter steel water supply pipeline in Sunset Bl and 42-inch-diameter steel water pipeline in Church Ln



# MWD LA-29 Project

Compact equipment used during excavation to protect nearby oak trees



Installation of 36-inch-diameter steel pipe in the LADWP property between Beloit St and Church Ln



# MWD LA-29 Project

Segments of 36-inch-diameter steel pipe arrive at Beloit St



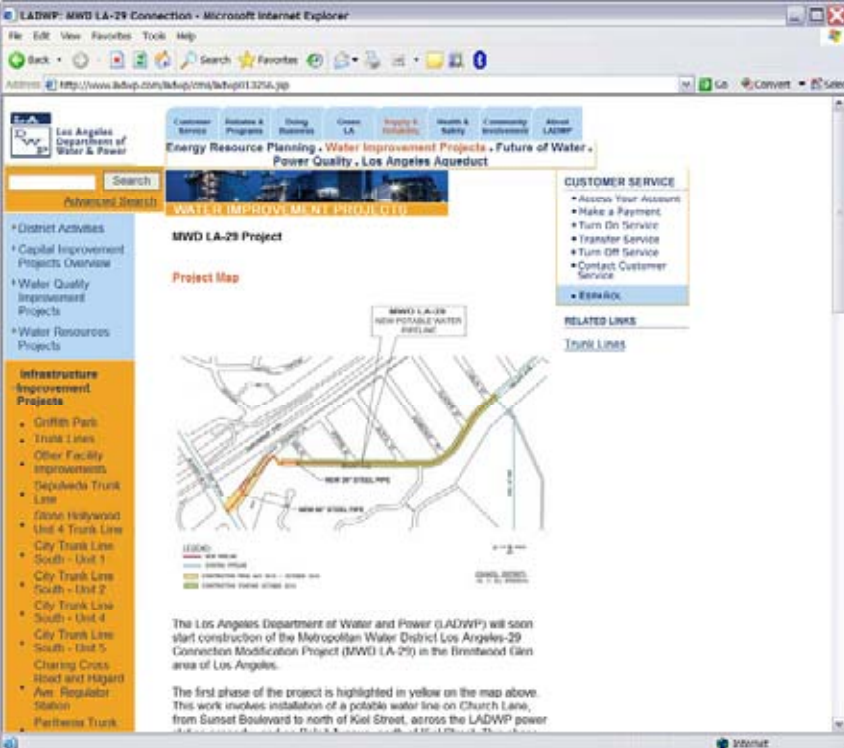
# MWD LA-29 Project

Use of small crane to install 36-inch steel pipe on north side of Beloit St helps minimize impact to community



# MWD LA-29 Project—More Information

- Contact Information  
Located on back of handout
- Website  
[www.ladwp.com](http://www.ladwp.com)
  - Search “MWD LA-29”



The screenshot shows a Microsoft Internet Explorer browser window displaying the LADWP website. The address bar shows the URL [http://www.ladwp.com/infopages/mwd\\_la29a.jsp](http://www.ladwp.com/infopages/mwd_la29a.jsp). The page features a navigation menu with links for Customer Service, Rates & Programs, Using Resources, Green LA, Safety & Security, Community Involvement, and About LADWP. The main content area is titled "MWD LA-29 Project" and includes a "Project Map" showing the project location in the Brentwood Glen area of Los Angeles. A yellow line on the map indicates the first phase of the project, which involves the installation of a potable water line on Church Lane, from Sunset Boulevard to north of Kiel Street, across the LADWP power lines. The page also includes a "CUSTOMER SERVICE" sidebar with links for Account, Payment, Service, and Contact, and a "RELATED LINKS" section for "THINK LINES".



# Skirball Cultural Center—North Building Project

Dates: June 14, 2010 to September 2012

Size: 32,000 Sq. Ft.

Location: North part of property on top of North Parking Garage

Type: Cultural and Educational Resource Building

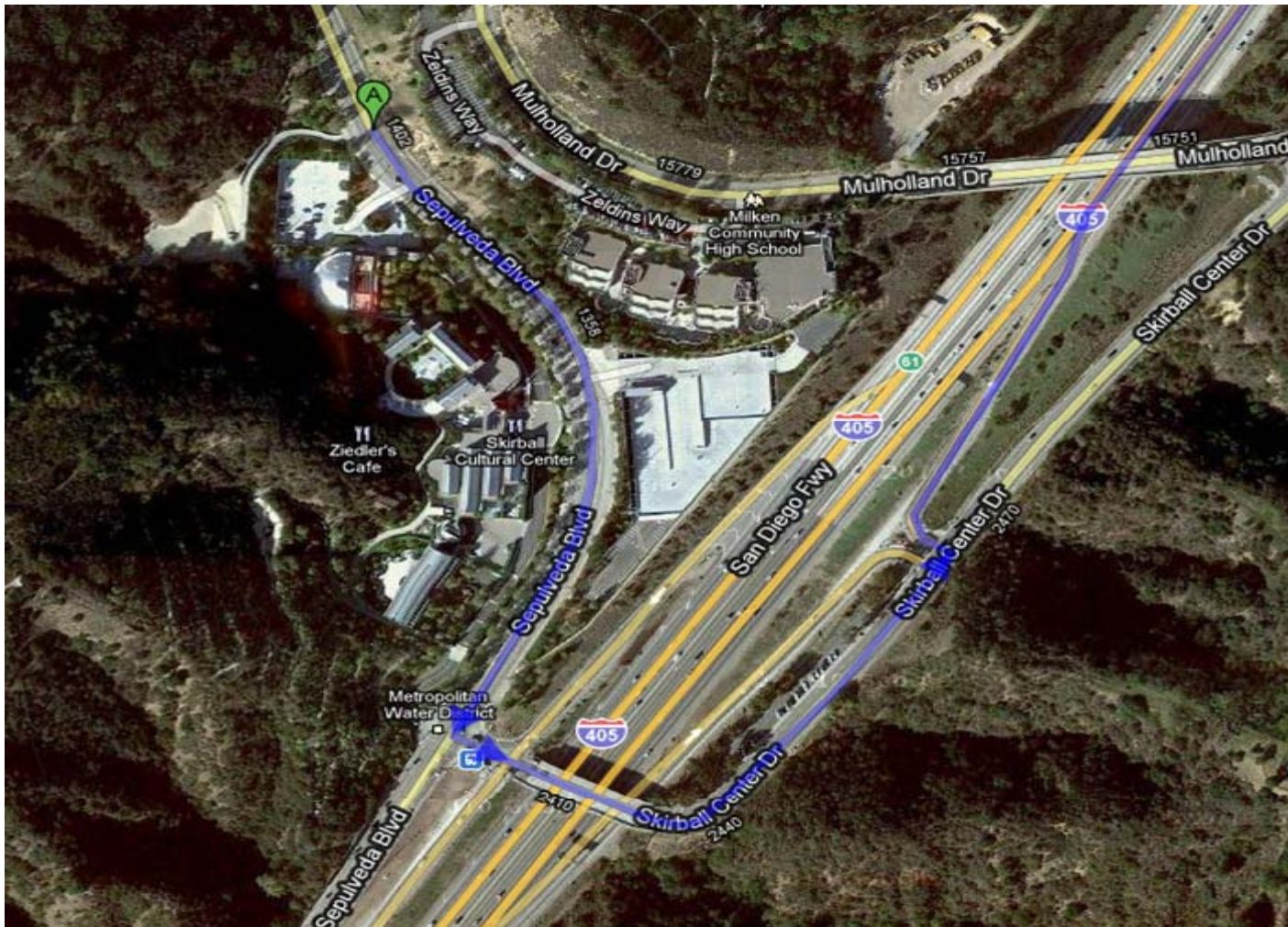


# Skirball Cultural Center—Soil Haul Route

- General Contractor: Matt Construction
- Soil to be exported: 9,300 yards
- Construction activity: contained mostly on Skirball Cultural Center property
- Dates: July 19 to August 30
- Haul route: Sepulveda Bl. 250 yards south, on Skirball Center Dr. Bridge, enter I-405 North, exit SR 126



# Skirball Cultural Center—Soil Haul Route



# Skirball Cultural Center—Construction Contact

Ben Elisondo, Director of Operations  
Skirball Cultural Center  
2701 N. Sepulveda Blvd.  
Los Angeles, CA 90049  
(310) 440-4777  
[belisondo@skirball.org](mailto:belisondo@skirball.org)



# Tonight's Objectives

- Present final landscape and Visual Quality Concepts plans
- Show how CAC feedback has been incorporated
- Answer remaining aesthetics questions
- Address any issues
- Finalize plans in order to move to construction



# Aesthetics Design Timeline

- Summer 2009 – Aesthetics Team develops three aesthetics themes for corridor
- October 2009 – Three themes presented to CAC
- Fall 2009 – CAC members share themes with their communities
- November 2009 – CAC provides feedback to team
- Winter 2009-2010 – Team selects one theme and revises aesthetics based on CAC comment



## Aesthetics Design Timeline (Contd.)

- January 2010 – Revised aesthetics presented at public open house
- January 2010 – Revised aesthetics presented to CAC
- February 2010 – Revised plant palette presented to CAC
- Spring 2010 – Aesthetics team finalizes aesthetics based on CAC and public feedback
- June 2010 – Final aesthetics presented to CAC

# Hardscape Themes Considered

## Themes Considered

Theme 1 – An aesthetic that, to a large extent, matches the existing bridges and walls in the corridor

Theme 2 – Uses surrounding buildings' aesthetics, primarily art deco, as inspiration

Theme 3 – Inspired by recent trends in highway architecture



# Bridges Overview—CAC Feedback



- Minimalist approach
- Sleek design, harmonious from one bridge to the next
- Incorporate current style of Mulholland Bridge



# Bridges—Sunset Bl.



# Bridges—Skirball Center Dr.

North View



# Bridges—Skirball Center Dr.

South View



# Bridges—Mulholland Dr.

South View



# Undercrossings Overview—CAC Feedback

- Undercrossings in the same area should have consistent look
- Simple, modern, unadorned design

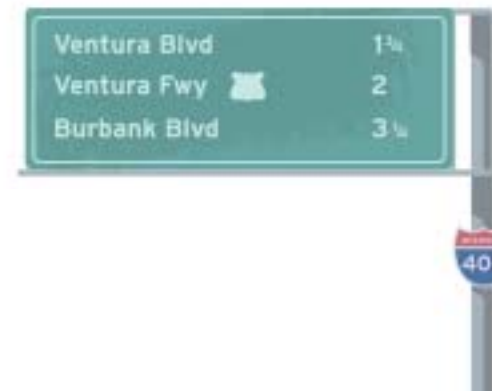


# Undercrossings—Olympic Bl.

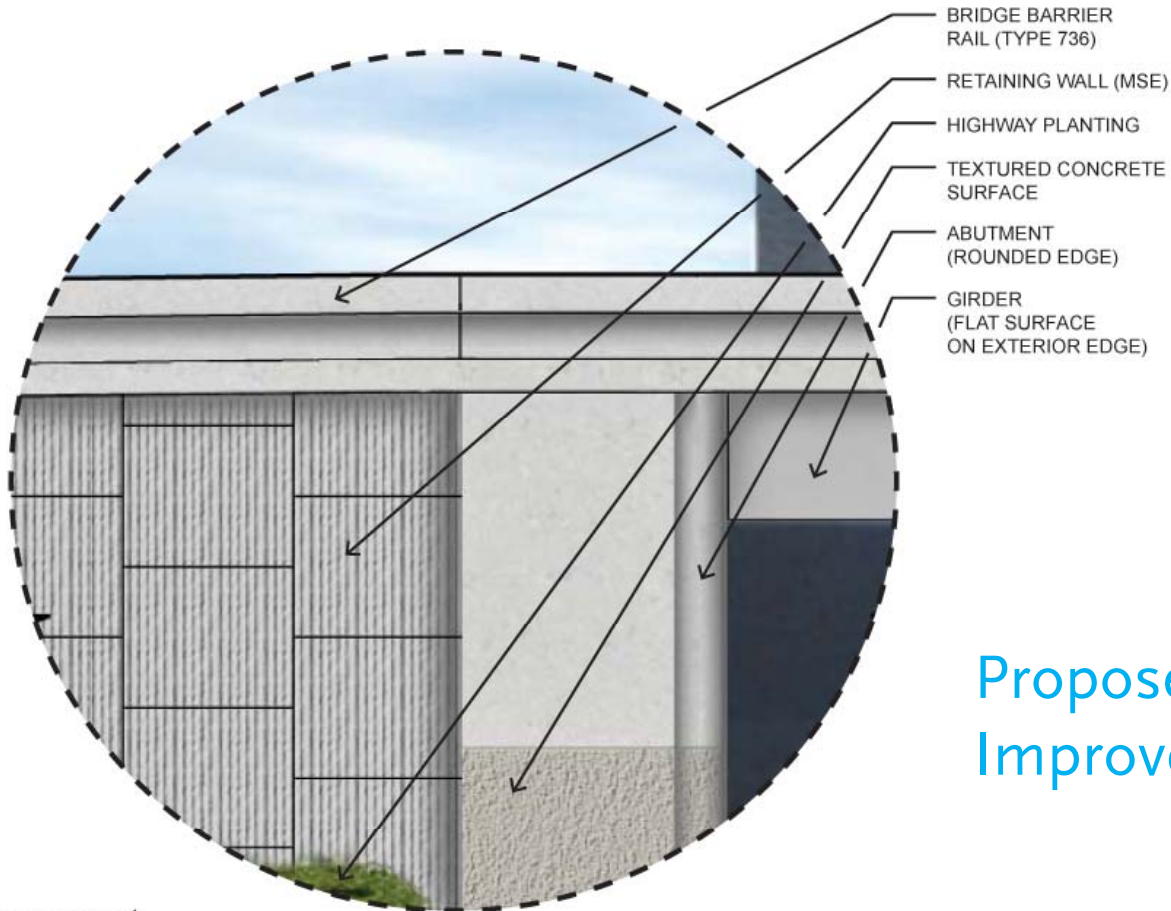
Northbound



## Proposed Improvements



# Undercrossings—Olympic Bl.



Proposed  
Improvements

Enlargement



# Undercrossings—Church Ln.



## Proposed Improvements



# Sound Walls Overview—CAC Feedback

- Prefer Theme 2 with fluted pilasters in urban portion of the project
- Pilasters radiate out from Wilshire
- Starting at Sunset and moving north, do not use pilasters
- At north end and south end of project, match to existing walls



Visual simulation—sound wall with pilaster

# Walls—Sound Walls



Sound wall at south end of project

Sound wall at north end of project



# Walls—MSE Retaining

CAC feedback:

- Blend sound wall Theme 2 with Retaining Wall (MSE) Theme 3
- Maintain consistency with surroundings



MSE retaining wall with sound wall and pilasters



# Walls—Cast-in-Place

CAC feedback:

- Prefer Theme 2
- Theme 2 allows each square to be painted for less garish graffiti removal

Cast-in-place retaining wall with gridded fractured fin texture



# Walls—Soil Nail

CAC feedback:

- Prefer rock-like walls that will blend into the natural landscape
- Prefer design similar to Getty's walls

Mimic Rock Finish



# Walls—Cast-in-Place (City), Soil Nail (Urban)

Cast-in-Place (City):

Smooth concrete texture with roughened lower band

Soil Nail (Urban):

Steel trowel finish with roughened lower band



# Landscape Overview

## Development of Landscape Plan:

- CAC feedback
- Aesthetic requirements – view enhancement, screening, etc.
- Functional requirements – detention basins, bioswales
- Location – West LA, San Fernando Valley, Sepulveda Pass
- Maintenance requirements
- Water requirements
- Mitigation requirements
- Site-appropriate foliage



# One-Month Construction Look Ahead



# Wilshire Segment

## Wilshire Loops, W of 405

- Driving piles for SB 405 to EB Wilshire off-ramp
- Sidewalk closed on EB/WB Wilshire for two days each, not at the same time
- Create access and clear & grub for NB 405 to EB Wilshire off-ramp
- One lane closure on SB Sepulveda from Wilshire to Ohio

## Santa Monica UC

- Create access and clear and grub



# Wilshire Segment

## Constitution UC

- Utility Relocation
- Temporary lane closure on Constitution and Sepulveda

## Walls

- 1685: W of I-405, north of Constitution
- 1686/1672: east of I-405, north of Wilshire and Constitution
- One lane closure on SB Sepulveda Bl. from Montana Av. to Wilshire Bl.
- Bike/pedestrian path closed from Brentwood Glen Av. to Constitution Av.



# Mulholland Segment

## Getty Trail Head

- Crusher site operation during the daytime and nighttime hours
- Retaining wall construction along the NB I-405

## Sherman Oaks Wall construction

- Clearing/grubbing and grading of work zone area along NB and SB I-405

## Valley Vista

- Demolition of three houses in mid July
- Conduct clearing and grubbing operations in mid July during daytime
- Will begin construction of sound wall in August



# Mulholland Segment

## Skirball Bridge Demolition and Reconstruction Activity

- Conduct bridge preparation work and set up construction yards in late June
- Set-up K-rail in early July at the center of the bridge to separate traffic from the work zone
- Reconfigure traffic to maintain one lane of traffic in each direction during construction in early July
- Demolition of north side of Bridge (7 nights)
  - Over SB I-405 – 2 nights
  - Over NB I-405 – 2 nights
  - Over NB off-ramp – 1 night
- Reconstruction of north side of Bridge ( 7 months)



# Sunset Segment

## Sepulveda Bl. Improvements (Montana to Ovada)

- Utility relocation (NB closure of Sepulveda Bl. during non-peak hours)
- Bronwood Av. vault work (24/7 closure for 3 weeks)
- Montana Av. off-ramp closure

## 1720/1730 Retaining Wall Construction

- Vegetation removal
- Temporary fence and sound blanket installation



# Sunset Bridge Replacement – Current Work

- Remove hazardous material (lead paint)
- Clear and grub
- Create access roads around bridge
- Support bridge and abutments
- Remove conduits, hand rail, guard rail, light poles
- Remove wood inside bridge
- Support (in place) 34-inch active water line system
- Re-stripe freeway for K-rail placement

# Sunset Bridge Future Work Schedule

- Removal of bridge (six nights)
  - Over NB I-405 - two nights
  - Over SB I-405 - two nights
  - Over Sepulveda Bl - two nights
- Removal of columns/abutments (three nights)
- Reconstruction of bridge (10 months)
- Remove and reconstruct northern side of bridge  
Winter 2011

# For More Information

Project Hotline: (213) 922-3665

I405@metro.net

[www.metro.net/405](http://www.metro.net/405)

[www.facebook.com/405project](http://www.facebook.com/405project)

Twitter: [http://twitter.com/I\\_405](http://twitter.com/I_405)

Nixle: [nixle.com](http://nixle.com)

