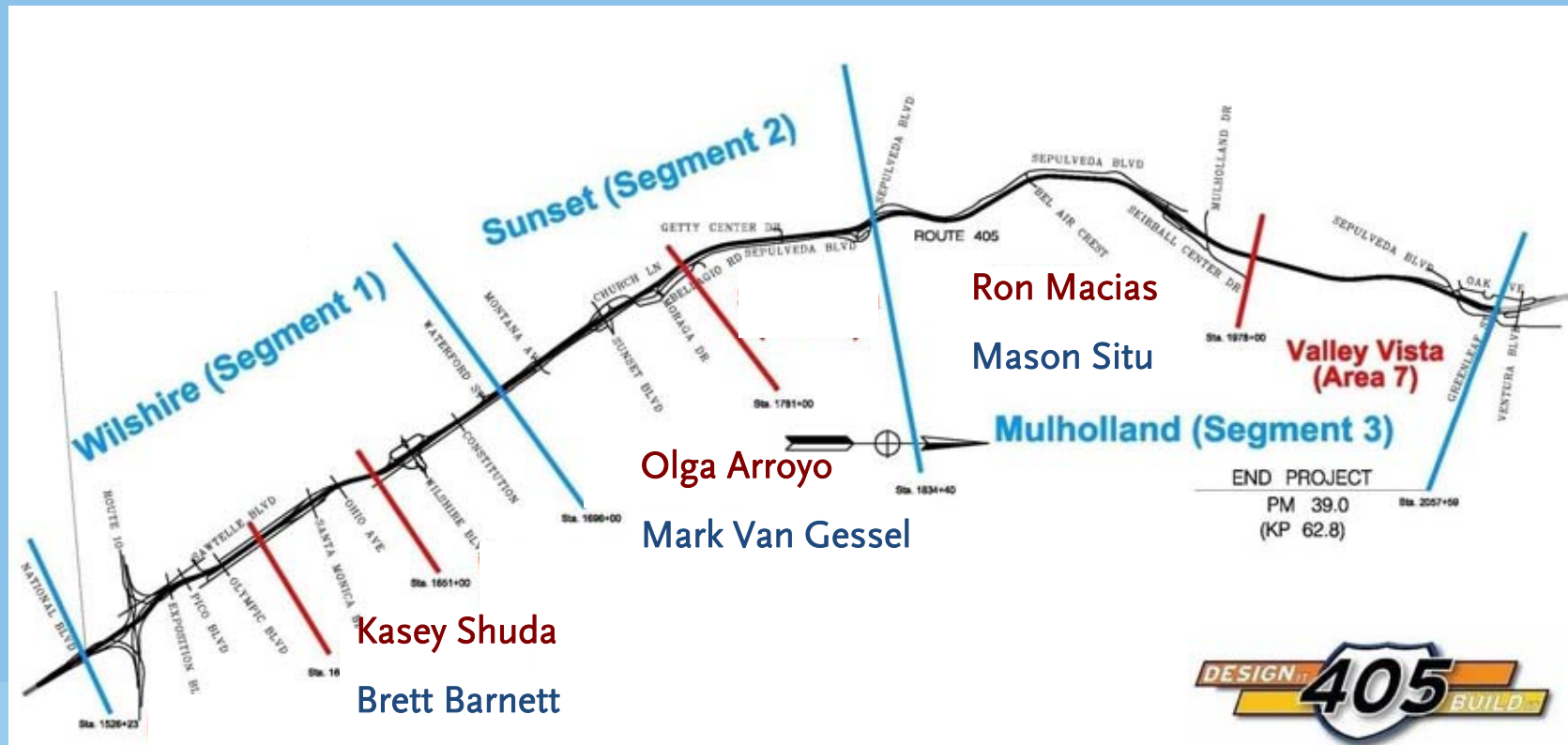


I-405 Sepulveda Pass Widening Project

Community Advisory Committee Meeting
April 22, 2010



Project Approach



Ron Macias
Mason Situ
Olga Arroyo
Mark Van Gessel

Kasey Shuda
Brett Barnett



Mainline Look Ahead

Activity	Closures/Notes	Work Hours	Projected Date
Striping (reconfigure lanes) <i>except S/B between 101 and The Getty Center</i>	Full staged freeway closures	Night	April - May
Saw cut and grinding	Lane reductions, detours	Night	April - May
K rail placement (in sections)	Lane reductions, detours	Night	April - May

Wilshire and Sunset ramps will not be closed at the same time.



Full Freeway Closure Schedule

Activity	Segment	Date *	Duration	Description
Sunset Bl. Bridge demolition; ramp closures	Montana Ave. to Moraga Dr.	Mid- May	4 Nights	One direction at one time
Freeway Restriping – SB full freeway closures	Santa Monica Blvd. to National Blvd.	4/26	3 Nights	Detour in place
Freeway Restriping – SB full freeway closures	Sunset Blvd. to Santa Monica Blvd.	4/29	2 Nights	Detour in place
Freeway Restriping – SB partial freeway closures	Skirball Center Dr. to Wilshire Blvd.	5/3	2 Nights	HOV, 1, 2
Freeway Restriping – SB full freeway closures	U.S. 101 to Getty/Sepulveda Ramps	5/5	3 Nights	Detour in place

* Subject to change



Mulholland Segment Look Ahead (Sepulveda to 101 Highway)

Area	Activity	Closures/Notes	Work Hours	Projected Start Date
Mission Land Fill	Site office set up	Working on setting up the field office, will move in in late April.	Day	Late April
Getty Trail Head	Clear and grub	Existing parking lot and hiking trail will be closed.	Day	May
	Crusher pad setup and retaining walls construction	No residents within impacted perimeter.	Day/ Night	May



Mulholland Segment Look Ahead (Continued)

Area	Activity	Closures/Notes	Work Hours	Projected Start Date
Sherman Oaks (East of I-405)	Pre-construction surveys	Surveying houses in the vicinity of the wall construction	Day	April
	Noise monitoring in the vicinity of I-405	Will take measurements where required per contract requirements	Day/ Night	April
	NB early grading (about 1400 feet north of Mulholland Bridge)	Construction trucks in/out via mainline	Day/ Night	Late April
	Clear and grub	Construction trucks in/out via mainline	Day/ Night	May
	Retaining walls construction	Will build two retaining walls along northbound freeway	Day/ Night	May

Mulholland Segment Look Ahead (Continued)

Area	Activity	Closures/Notes	Work Hours	Projected Start Date
Sherman Oaks (West of I-405)	Pre-construction surveys	Surveying houses in the vicinity of the wall construction	Day	April
	Noise monitoring in the vicinity of I-405	Will take measurements where required per contract requirements	Day/ Night	April
	SB early grading (about 1400 feet north of Mulholland bridge)	Construction trucks in/out via mainline.	Day/Night	Late April
	Clear and grub	Construction trucks in/out via mainline and only small vehicle will use local residential streets	Day/Night	Late May
	Retaining/Sound wall construction	Will construct retaining/sound wall along southbound freeway	Day/Night	June



Mulholland Segment Look Ahead (Continued)

Area	Activity	Closures/Notes	Work Hours	Projected Start Date
Valley Vista	Pre-construction surveys	Surveying houses in the vicinity of the wall construction	Day	April
	Noise monitoring in the vicinity of I-405	Will take measurements where required per contract requirements	Day/Night	April
	House demolition	Access to the work zone area will entail access from the local street	Day	May
	Clear and grub	Access to the work zone area will entail access from the local street and freeway	Day	Late May
	Retaining/sound wall construction	Access to the work zone area will entail access from the local street and freeway	Day	Late June



Mulholland Segment Look Ahead (Continued)

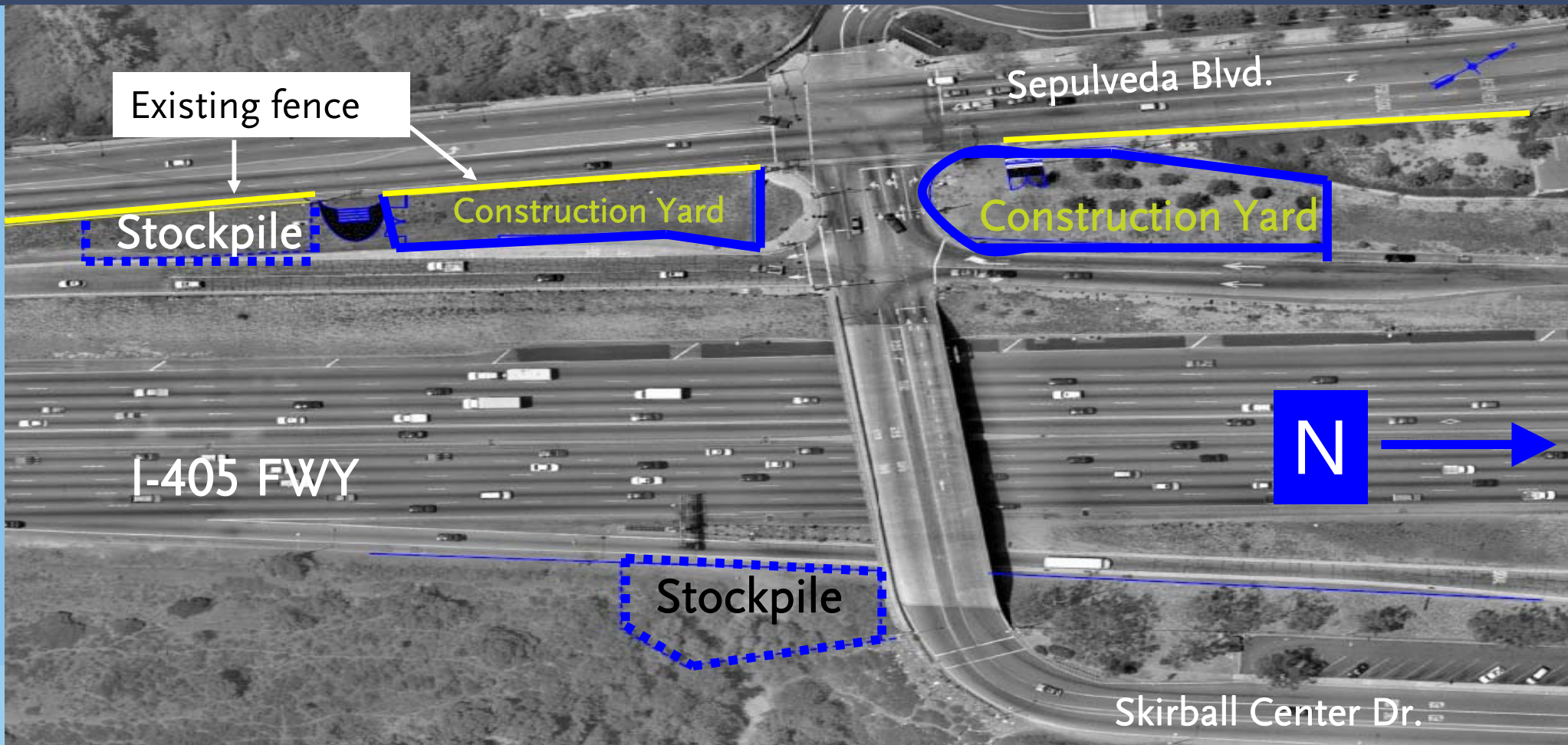
Area	Activity	Closures/Notes	Work Hours	Projected Start Date
Skirball Bridge	Construction yard set up	Will set up construction yards within Caltrans right-of-way	Day	Late May
	Installation of temporary traffic lights and signs	Modify traffic control to reflect construction zone	Night	Early June
	Lane reduction on southbound off-ramp	Southbound off-ramp will remain accessible	Day/ Night	Early June
	Striping and K-rail placement	Will close north half of the bridge, and re-stripe the south half to maintain one lane for each direction.	Night	Mid June
	Bridge demolition	During the demo, night closure for bridge and freeway	Night	Late June
	Realignment of northbound off-ramp	Access to northbound off-ramp will be maintained	Night	Mid July



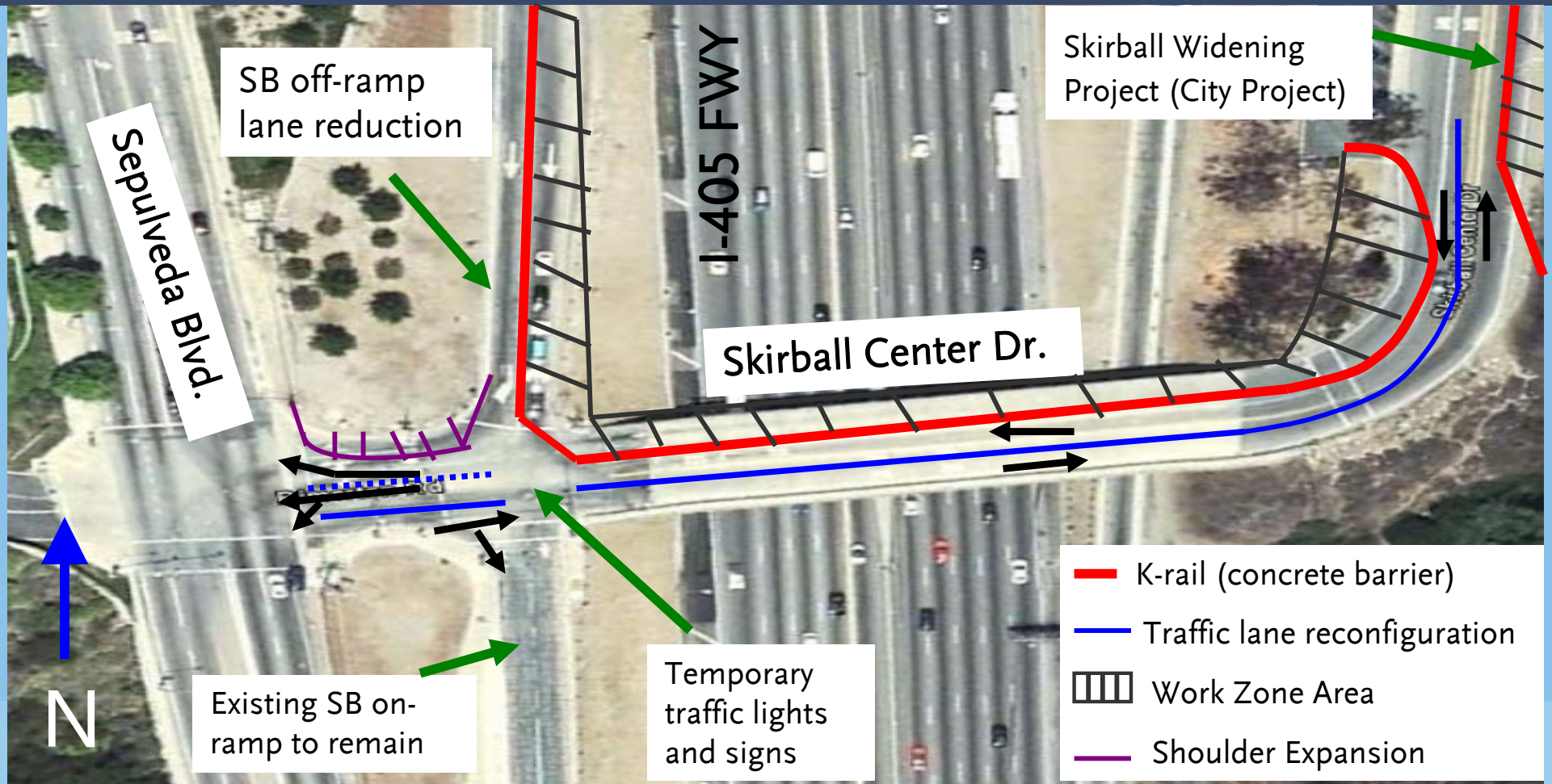
Traffic Detour Plan

- Regional traffic detours
- Local traffic detours
 - LA Dept of Transportation
 - Elected officials
 - Modify traffic signals and signs if necessary
 - Emergency coordination with LAPD, fire department, CHP, etc.

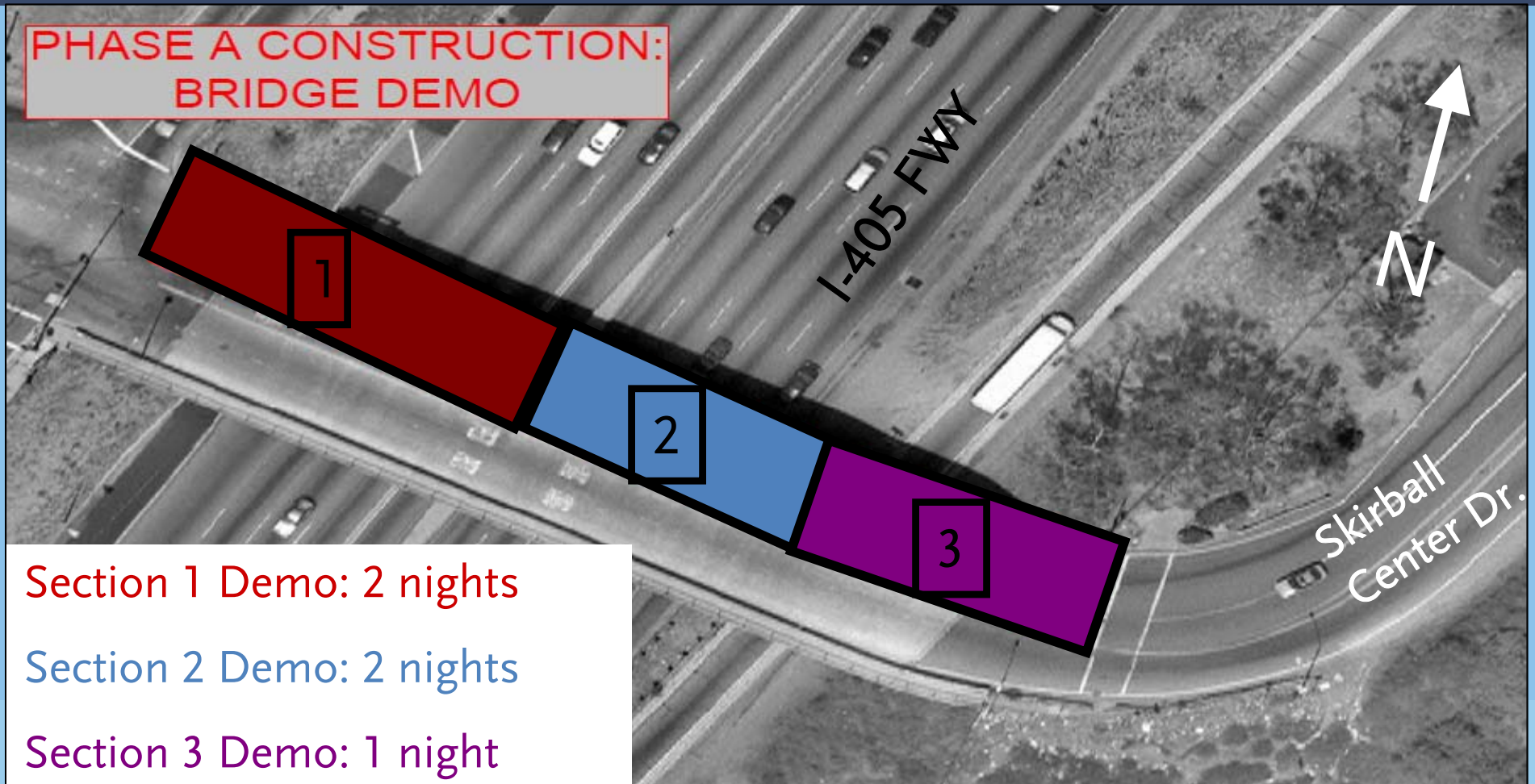
Skirball Bridge Construction Yard Layout



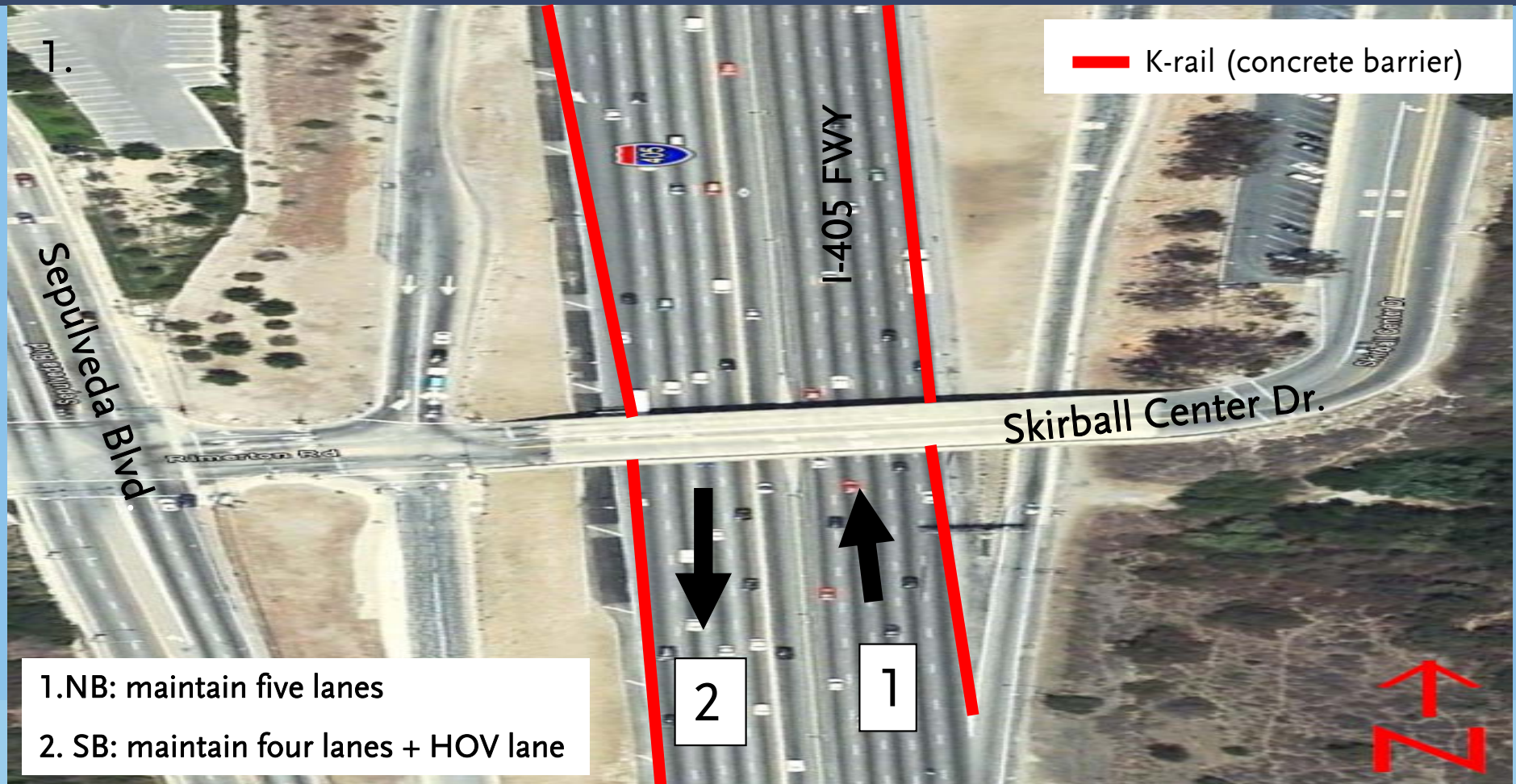
Skirball Bridge Construction Work Area



Freeway/Ramp Closure During Phase A Demo



Freeway K-rail Placement Stage I

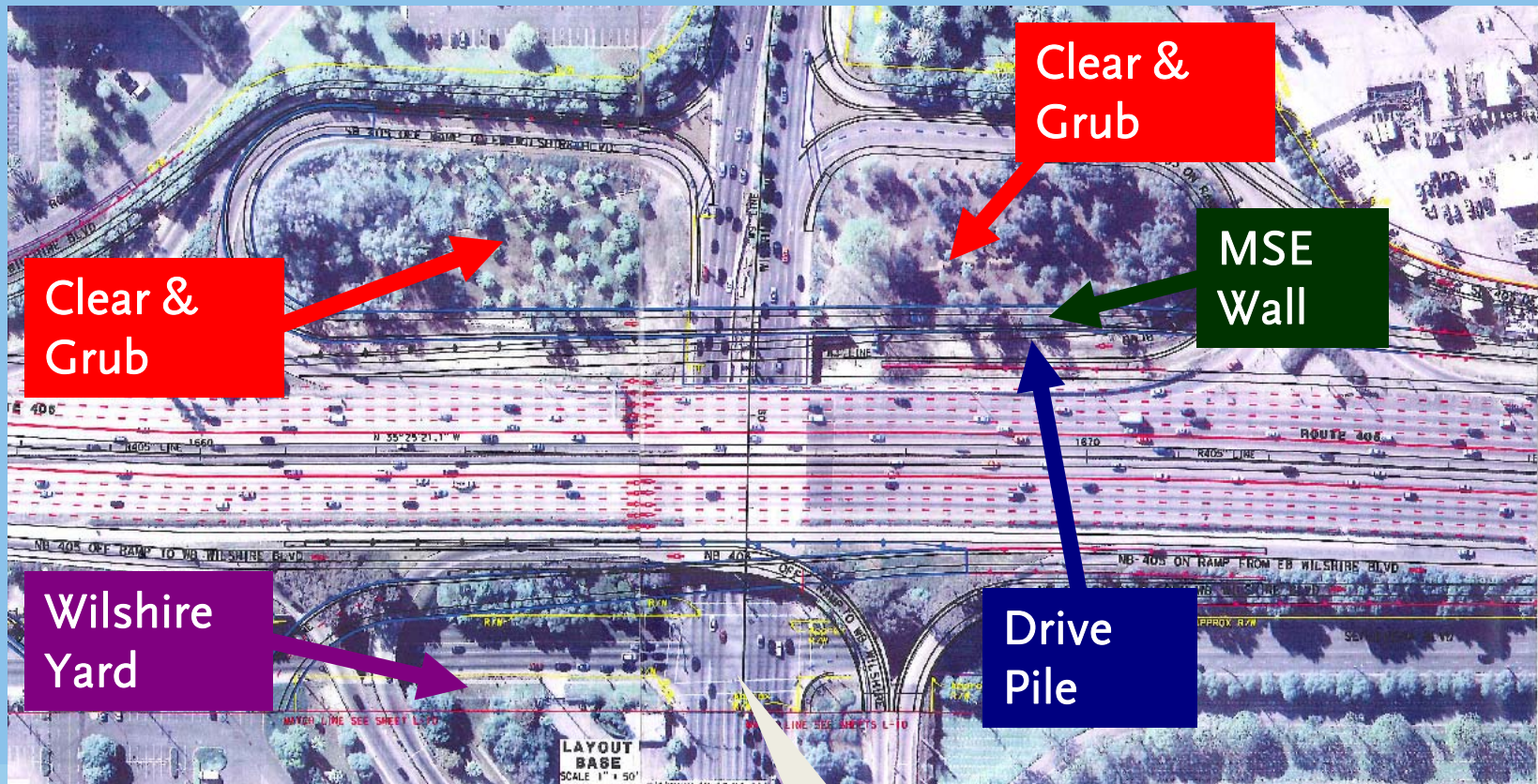


Wilshire Segment Look Ahead (National to Waterford)

Activity	Closures/Notes	Work Hours	Projected Date
Development of Cotner Yard		Day	Through April
Move in to Wilshire Yard		Day	April 26
Clear Wilshire on/off ramps (west side)		Night	April 28
Drainage for MSE Walls	Possible ramp closures	Day	May 3
Build MSE walls SB I-405, north of Wilshire Blvd.	Possible night work for dirt hauling	Day	Mid May
Drive steel pile SB I-405, north of Wilshire Blvd.		Day	Mid May
VA Sewer Relocation	Lane closures on Bonsall Road (VA property)	Day	April 27



Wilshire Segment Map



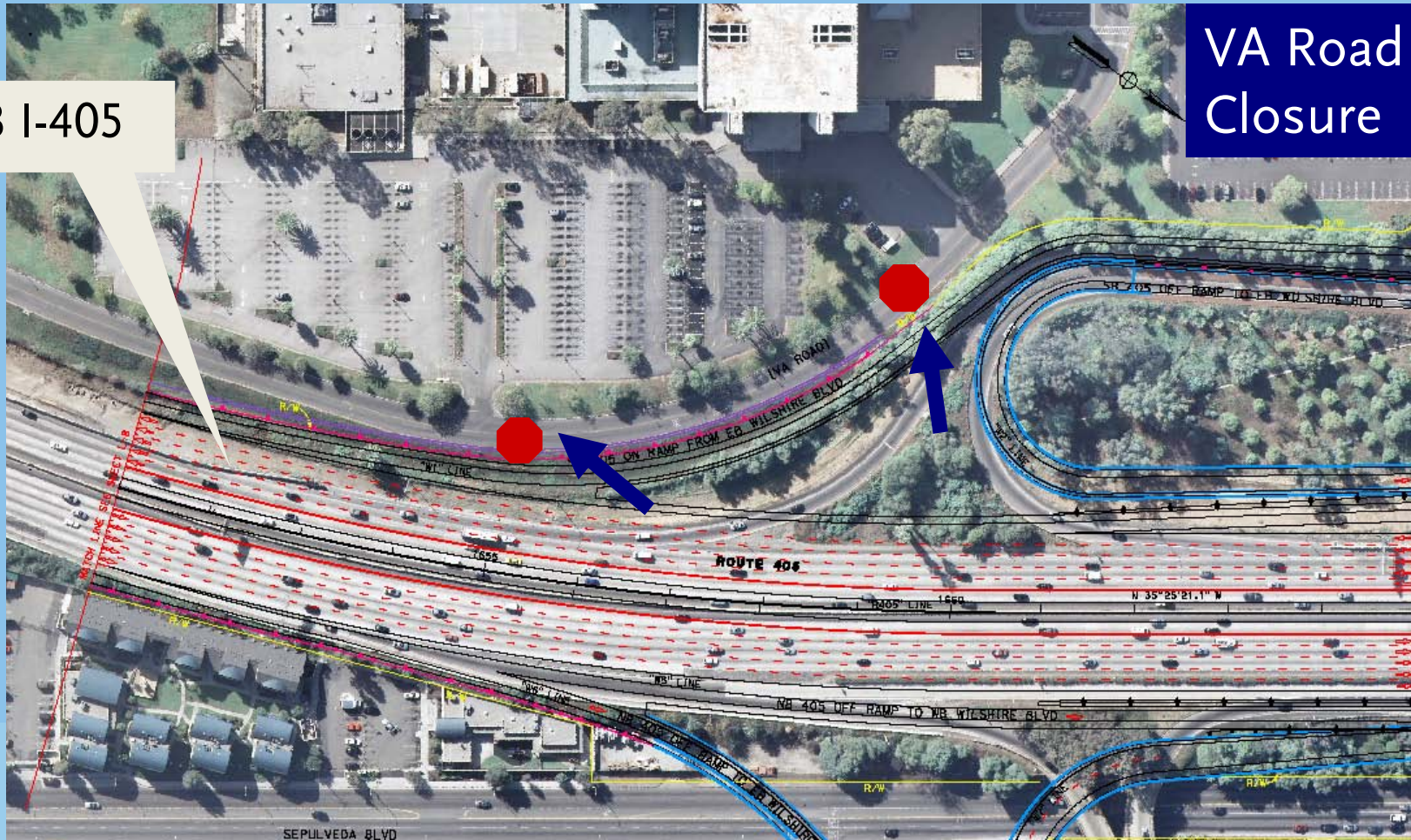
Wilshire Blvd.



VA Sewer Relocation

SB I-405

VA Road Closure



Sunset Segment Look Ahead (Waterford to Sepulveda)

Location	Activity	Closures/Notes	Work Hours	Projected Date
Sepulveda between Montana and Sunset	Undergrounding utilities	NB closure off-peak hours. Closure of Sepulveda intersection at Homedale, Bronwood, Alleyway	Day/Night	March through May
	Tree removal (empty lot)			Late March
	Clear hillside (shrubs) Phase I	Lane reduction	Day	Late April
	Build access		Day	May
	Clear hillside (trees) Phase II	Lane reduction	Day	Late April/Early May
	Begin retaining and sound walls		Day/Night	May



Sunset Segment Look Ahead (Continued)

Location	Activity	Closures/Notes	Work Hours	Projected Date
Sunset Bridge	Clear on/off ramps	Lane closures	Day/Night	Late April
	Realign traffic	Traffic reconfiguration (2 lanes each direction); lane closures	Night	Early May
	Begin Sunset bridge demolition	Traffic delays; lane reduction	Day/Night	Mid May
	Clear and grub (Montana to Church)		Day	Late April
	Yard Development		Day	Late April – Early May

Sunset Segment Look Ahead (Continued)

Location	Activity	Closures/Notes	Work Hours	Projected Date
Church Ln. at Sepulveda (northbound)	Add an additional lane, improve mobility	Full weekend closure	Day/Night	Two Weekend: April 23 and April 30
Church Ln at Sunset (southbound)	LADWP (LA29) Waterline Improvement Project	6 month closure of Church Ln. between Sunset and Kiel St.	Day/Night	Early May
Sepulveda/Getty Ct. Drive	Yard Development		Day/Night	Ongoing



Sample Detour/Work Plan Map



Sunset Bridge Outreach Efforts

Media Buys

- Print ads
- Video display ads
- Backlit boards and digital displays at fitness centers
- LATimes.com
- DailyBruin.com



Sunset Bridge Outreach Efforts

Briefings

- Home Owner's Associations
- Neighborhood Councils
- Major institutions
- CD11 Transportation Advisory Committee
- West LA Traffic Committee
- Bus Operations (Metro and Municipal Operators)
- Online media briefing
- Online chat



Sunset Bridge Outreach Efforts

Construction Notices/Fact Sheets

- Schools, faith organizations, recreation centers
- Emergency responders
- LAWA Flyaway
- AAA and other transportation organizations
- Taxis, FedEx, UPS, etc.
- Door-to-door distribution (residents and businesses)
- Libraries
- Offices of elected officials



Sunset Bridge Outreach Efforts

Online

- Metro.net/405
- Twitter
- Facebook
- Eblast
- The Source



1720/1730 Wall Aesthetics

Description of the wall

- 1720 approximately 500-feet long; 1730 approximately 700-feet long
- Both vary in height from 20 to 45 feet, greatest height in center
- Walls run along east side of Sepulveda Blvd., between Sunset Blvd. and Montana Ave.



1720/1730 Wall Aesthetics

Process to this point

- CAC provides comments
- Artists gathered comments at April 8 Open House; other comments forwarded by Community Relations
- Refined concept presented to CAC tonight
- Final aesthetics presentation at May meeting



1720/1730 Wall Aesthetics

Please send your comments to Metro Community Relations
Tel: 213.922.3665



The End

Metro Community Relations

Project Hotline: (213) 922-3665

I405@metro.net

www.metro.net/405

www.facebook.com/405project

Twitter: http://twitter.com/I_405

Nixle: nixle.com

