

I-405 Sepulveda Pass Improvements Project

Community Advisory Committee

October 28, 2010



Thirty-Day Construction Look Ahead



Wilshire Segment

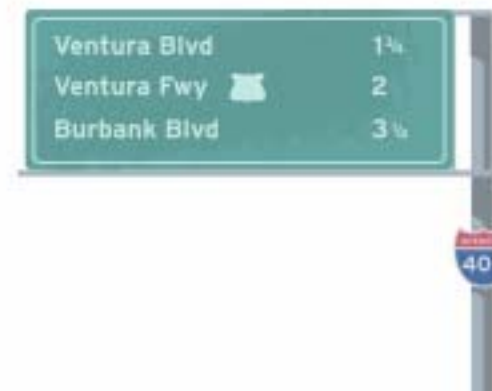
Top 5 Upcoming Activities

- Ohio Av utility relocation, bridge demo and widening
- Santa Monica bridge demo, ramp construction
- Wall construction along NB 405, from Ohio to Constitution
- Beloit Av widening, sound wall demo and reconstruction
- SB I-405 at Wilshire abutment forming and bridge work



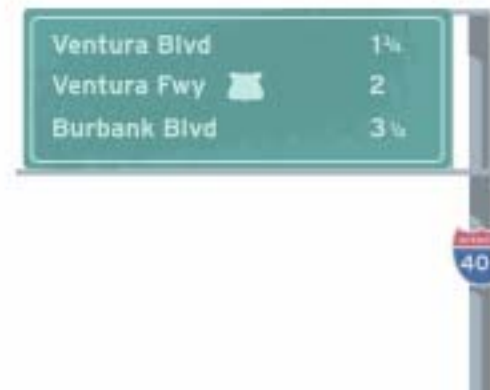
Wilshire Segment

Location	Activity	Closures/Notes	Work Hours	Projected Date
Wilshire Blvd loops, W of 405	Build MSE wall		D/N	On-going
	Pouring and forming abutments		Night	December
	Replacing on-ramp	WB Wilshire to SB 405 on-ramp closed 14 days	Night	January 2011
Wilshire UC	Set girders and false work	Temp. full closure of Wilshire Bl	Night	November



Wilshire Segment

Location	Activity	Closures/Notes	Work Hours	Projected Date
Walls 1672/1686, North of Wilshire, East of 405	Build MSE retaining/sound wall	Lane reductions on Sepulveda Bl, NB 405	D/N	On-going
Wall 1685, N of Constitution, West of 405	Build MSE retaining/sound wall	Lane reductions on Sepulveda Bl, Bike path will be closed with detour	Night	On-going



Wilshire Segment

Location	Activity	Closures/Notes	Work Hours	Projected Date
Santa Monica Blvd	Drill pile	Temp night closures of ramps, 405	Day	October
	Build retaining/sound wall	Temp night closures of ramps, 405	D/N	Oct/Nov
	Widen bridge	Temp night closures of ramps, 405	D/N	Oct/Nov
	Ramp wall construction	Temp night closures of ramps, 405	D/N	November
Ohio Ave	Relocate multiple utilities	Temp closures of Ohio Av	Day	Oct/Nov
	Demo barrier	Temp closures of Ohio Av and 405	Night	November
	Widen bridge, drive pile	Lane reduction on Ohio Av	Day	December



Wilshire Segment

Location	Activity	Closures/Notes	Work Hours	Projected Date
Santa Monica Blvd	Drill pile	Temp night closures of ramps, 405	Day	October
	Build retaining/sound wall	Temp night closures of ramps, 405	D/N	Oct/Nov
	Widen bridge	Temp night closures of ramps, 405	D/N	Oct/Nov
	Ramp wall construction	Temp night closures of ramps, 405	D/N	November
Ohio Ave	Relocate multiple utilities	Temp closures of Ohio Av	Day	Oct/Nov
	Demo barrier	Temp closures of Ohio Av and 405	Night	November
	Widen bridge, drive pile	Lane reduction on Ohio Av	Day	December

Wilshire Segment

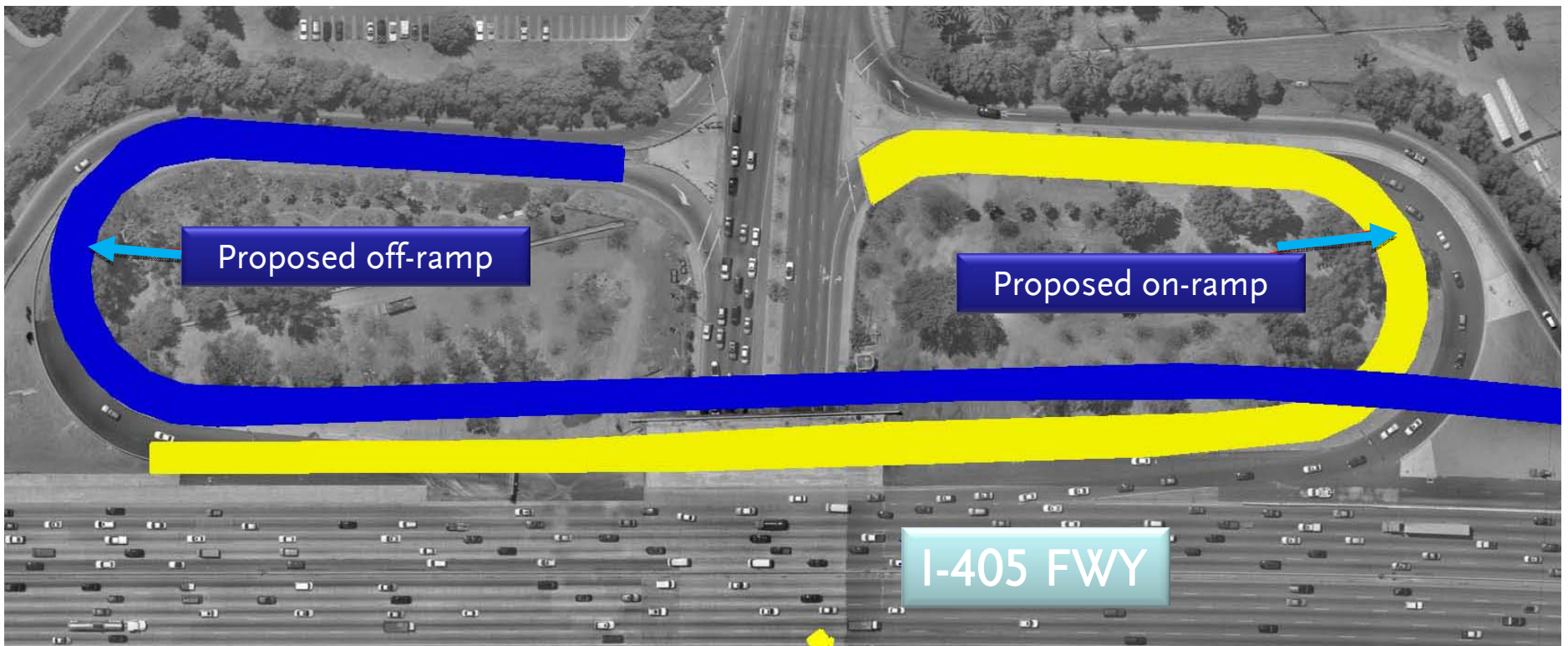
Location	Activity	Closures/Notes	Work Hours	Projected Date
Beloit Av, Santa Monica to Olympic Bl	Demo outer portions of sound wall		Night	November
	Drill shafts, build new MSE sound wall		Day	December
	Demo existing sound wall		D/N	April 2011
E. Dowlen Dr (VA property)	Jack and bore pit	Closure of E. Dowlen until late Aug	D/N	On-going

Wilshire Segment

Location	Activity	Closures/Notes	Work Hours	Projected Date
Beloit Av, Santa Monica to Olympic Bl	Demo outer portions of sound wall		Night	November
	Drill shafts, build new MSE sound wall		Day	December
	Demo existing sound wall		D/N	April 2011
E. Dowlen Dr (VA property)	Jack and bore pit	Closure of E. Dowlen until late Aug	D/N	On-going

Wilshire Segment

Proposed Wilshire Ramps



Mulholland Segment (Sepulveda to Ventura)

Top 5 Upcoming Activities

- Early prep work for the sound wall in Sherman Oaks
- Construction of retaining walls near Getty Trail Head
- Skirball Bridge reconstruction
- Crushing activities resume
- Redesign of Mulholland Bridge



Mulholland Segment

Area	Activity	Closures/Notes	Work Hours	Projected Date
Getty Trail Head	Crusher site operation	Continuing crusher site operation at the Getty Trail Head	Day/ Night	On-going
	Retaining walls construction	Building of two retaining walls along the northbound freeway. No resident within impacted perimeter.	Day/ Night	Ongoing
NB between Getty Trail Head & Skirball Bridge	Retaining wall construction	Will begin construction of additional retaining walls near the Bel Air Crest community	Day/ Night	Mid December



Mulholland Segment

Area	Activity	Closures/Notes	Work Hours	Projected Start Date
Sherman Oaks (west of I-405)	Clearing and grubbing	Closure of two right-hand lanes on the SB I-405 and Valley Vista on-ramp	Day/ Night	Ongoing until October
	Area grading and construction of retaining wall	Construction trucks in/out via mainline; only small vehicles use residential streets. Closures of southbound Skirball ramps.	Day/ Night	Ongoing until October 2011



Mulholland Segment

Area	Activity	Closures/Notes	Work Hours	Project ed Date
Valley Vista	Utility relocation	Will need to relocate two utilities to support sound wall construction. Project team is working to minimize impact to community.	Day	TBD
	House demolition	The work zone will get set-up behind behind temporary fencing.	Day	TBD
	Clear and grub	Access to the work zone area will entail access from street and freeway.	Day/ Night	TBD
	Sound wall construction	Access to the work zone area will entail access from street and freeway.	Day/ Night	TBD



Mulholland Segment

Area	Activity	Closures/Notes	Work Hours	Projected Date
Skirball Bridge	Bridge demolition	Demolished the span over the north side of the bridge in three nights. Demolition of abutment and center column will occur later in about a month.	Night	Completed
	Reconstruction	Will reconstruct north side of the bridge. Day and time work. Most work will be conducted behind k-rail. Some night time closures of the ramps and bridge.	Day/ Night	Ongoing until May, 2011



Sunset Segment

(Waterford to Sepulveda)

Top 5 Upcoming Activities

- Sunset Bridge footing construction
- Reopening of Sunset/Church intersection
- Montana undercrossing demolition
- Walls 1720/1730 (Sepulveda/Homedale) construction
- Overhead power undergrounding



Sunset Segment

Location	Activity	Closures/Notes	Work Hours	Projected Date
Sepulveda between Cashmere & Church/Ovada	Clear and grub (vegetation removal)	TBD: Maintain one lane in each direction of traffic	Day/Night	November/December
Sepulveda between Montana and Sunset	Utility relocation: Sewer line (2), water line & fire hydrant on Bronwood, fiber optic line.	TBD; Maintain one lane in each direction of traffic	Day/Night	November/December
Sepulveda – Homedale/ Bronwood	DWP pulling underground wires	Homedale and Bronwood periodically	Days / Nights	Mid-September to November
Walls 1720/1730	Clear and grub (vegetation removal) and build access	Maintain one lane in each direction of traffic	Day	Ongoing
	Drill pile	TBD; Maintain one lane in each direction of traffic	Day	October 22

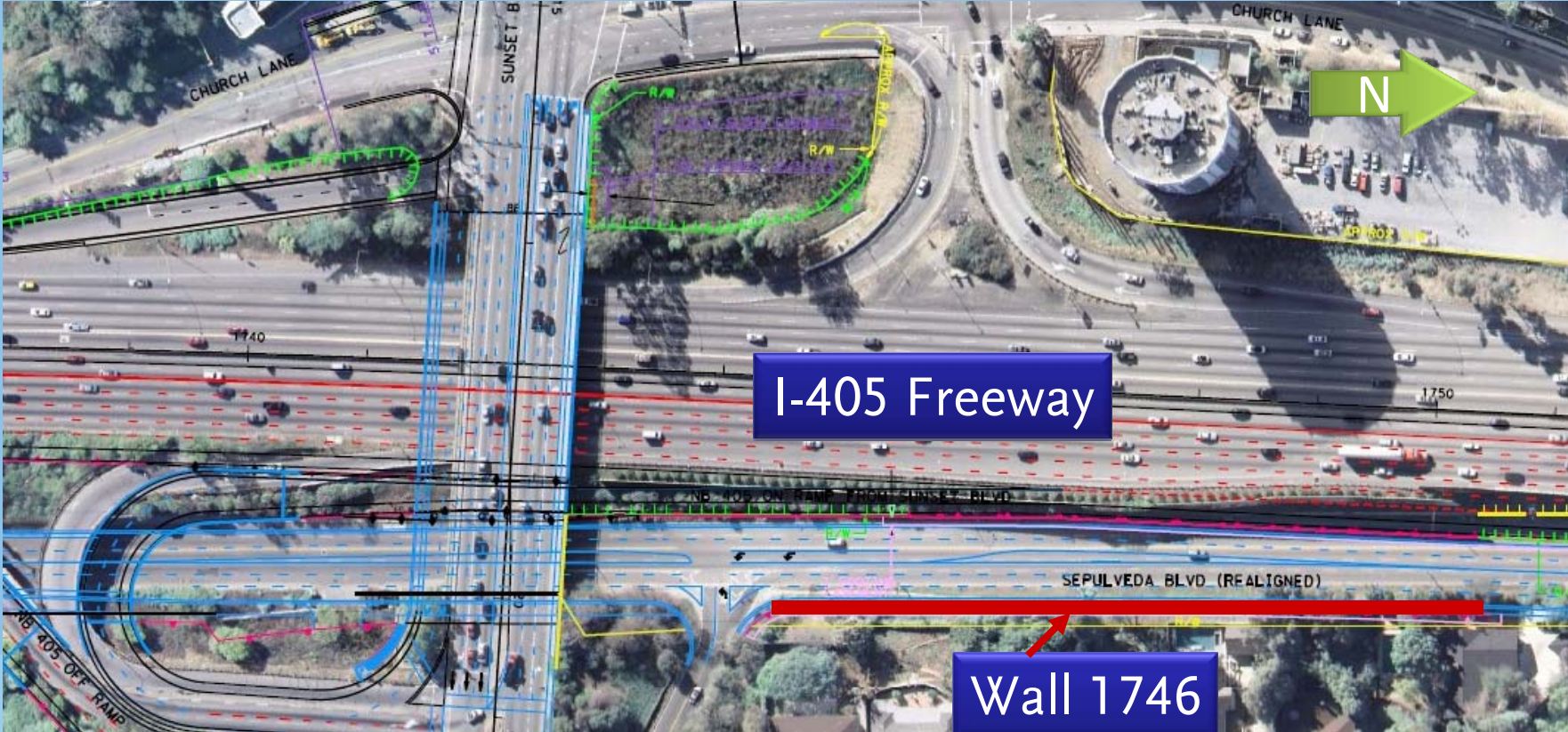
Sunset Segment

Location	Activity	Closures/Notes	Work Hours	Projected Date
Walls 1720/1730 (continued)	Retaining wall construction - permanent tie backs	TBD; Maintain one lane in each direction of traffic	Day	November/December
	Lateral walls and sound wall construction	TBD; Maintain one lane in each direction of traffic	Day	November/December
Sunset on ramp and Sepulveda Bl	Temporary Exxon Mobil oil line relocation	Nightly closures of Sunset Bl – NB on ramp; 36-hour single directional traffic lane on Sepulveda Bl to connect line-in under Sunset Bridge	Day/Night	Completed
Sunset Bridge	Demolition of abutments, 4 nights	Lane closures	Night	Completed
	Reconstruction	Equipment deliveries with night intermittent closures of Sunset Bl and I-405; Abutment foundation pile driving	Day/Night	On going

Sunset Segment

Location	Activity	Closures/Notes	Work Hours	Projected Date
Wall 1746	Utility relocation: Time Warner, sewer line	TBD; maintain one lane in each direction of traffic	Day/Night	November
	Wall construction	TBD; maintain one lane in each direction of traffic	Day/Night	November/December
Thurston Circle	New gas line installation	Maintain access to residents	Day as much as possible	August/November
Montana Bridge	Demolition associated with widening of bridge	TBD; maintain one lane in each direction of traffic	Day/Night	Early November
	Temporary storm drain relocation	TBD; maintain one lane in each direction of traffic	Night	Late October

Sunset Bridge Replacement Work



For More Information

Project Hotline: (213) 922-3665

I405@metro.net

www.metro.net/405

www.facebook.com/405project

Twitter: http://twitter.com/I_405

Nixle: nixle.com

