

I-405 Sepulveda Pass Improvements Project

Community Advisory Committee

January 27, 2011



Project Look Ahead

- Reconstruction of Sunset and Skirball Bridges
- Demolition and reconstruction of Wilshire ramps
- Construction of southbound Skirball Center Dr ramps
- Moving of utilities
- Construction of retaining and sound walls
- Demolition and reconstruction of Mulholland Dr Bridge



Project Look Ahead

Mulholland Bridge Update

- Project team is working with City Planning staff to resolve some concerns regarding the Mulholland Drive Scenic Plan
- Project will attend February 17 meeting of Mulholland Design Review Board
- Those who wish to comment on the relocation of Mulholland Bridge, which the project believes is the best short- and long-term solution, may attend that meeting



Project Look Ahead

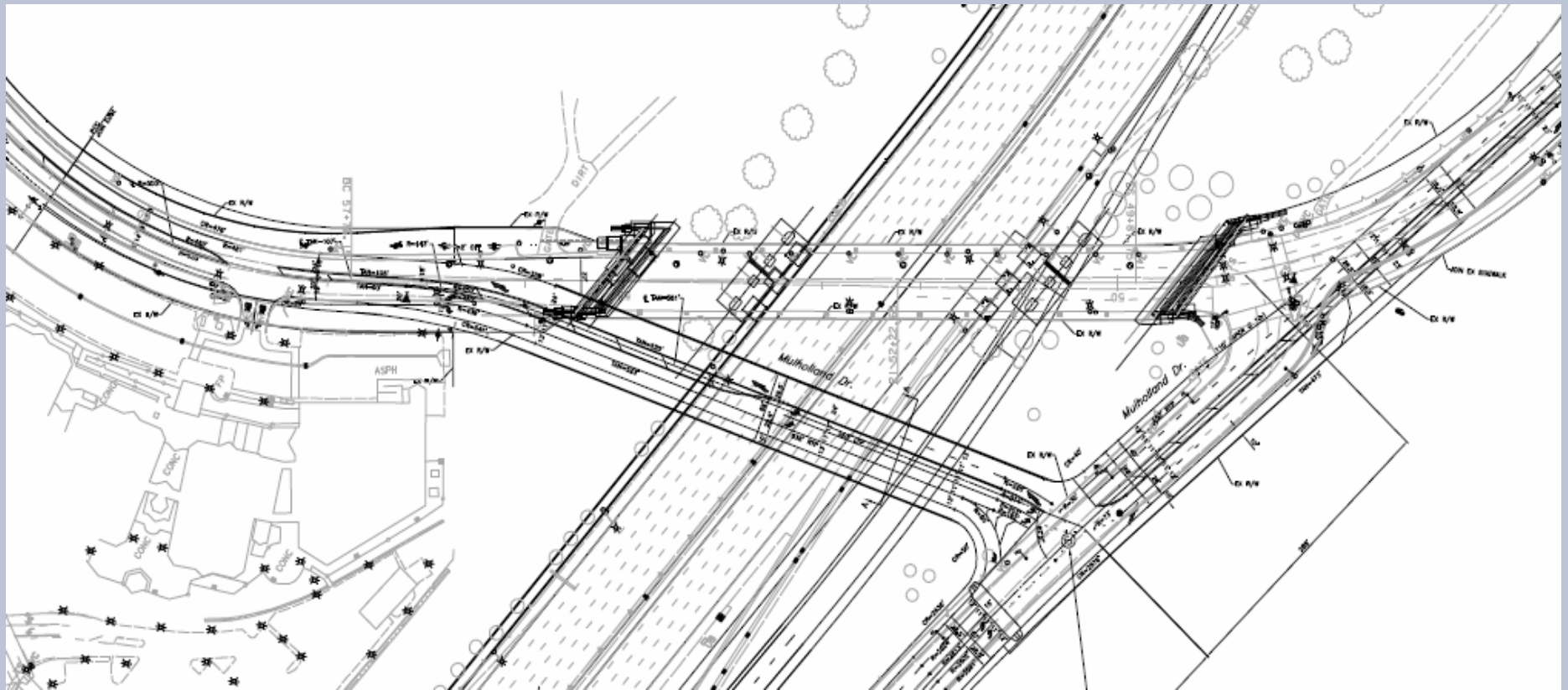
Mulholland Bridge Update (Contd.)

- Relocating Mulholland Bridge provides these benefits:
 - Improve traffic flow at the intersection of Mulholland and Skirball Center Drive
 - Create one full freeway closure instead of two during demolition
 - Current bridge will remain in place with a total of three lanes of traffic during construction
 - No need for utility relocation work and associated lane closures
- If realignment is not possible, the project will have return to the baseline plan
- Project will continue to provide updates on the status of the design



Project Look Ahead

Realignment Design of Mulholland Bridge



CAC Schedule for 2011

- March 24
- May 26
- July 28
- September 22



Quarterly Public Meeting Schedule for 2011

- February 24
- May 19
- August 18
- November 17



Social Media Outreach

Real-Time Updates

- This week Community Relations sent its 3,700th Twitter posting
- Last month 9,537 pages were viewed on the project website
- Our Facebook page currently has 801 likes and 524 followers
- Nixle has 280 followers
- Twitter has 1,820 followers
- 11 Construction Notices distributed in December

A screenshot of a website displaying construction notices. The page is titled 'Wilshire Segment (National Bl to Waterford St)' and 'Sunset Segment (Waterford St to Getty/Sepulveda Bl)'. It features a table of 'Today's Closures' with columns for 'Date Posted' and 'Description'. The table lists several closures for December 6th, including full closures of northbound lanes on Wilshire and Santa Monica, and lane reductions on Sepulveda. To the right of the table is a navigation menu with links for 'Latest News', 'Meetings', 'Maps', 'Fact Sheets', 'Reports and Info', 'Did You Know?', 'Useful Links', and 'Contact Us'. Below the menu is a 'Daily Updates' section with a warning icon, containing several short notices about construction closures and lane reductions on various streets like Sepulveda, Skirball Center Dr, and Mulholland Dr.

Today's Closures	Date Posted
MO-WIL: Full closure of northbound Beloit from Santa Monica to Ohio tonight, 9pm to 6am, for striping.	Dec. 6th
MO-WIL: Full closure of northbound Cotner Av from Santa Monica to Ohio tonight, 9pm to 6am, for striping.	Dec. 6th
MO-WIL: Full closure of Constitution Av from Sepulveda to VA gate tonight, 9pm to 6am, for potholing/paving.	Dec. 6th
MO-WIL: Number 1 lane of eastbound, westbound Santa Monica Bl closed from 9pm to 6am for striping.	Dec. 6th
MO-WIL: Number 5 northbound lane closed from Santa Monica Bl to Wilshire tonight, 10pm to 6am.	Dec. 6th
MO-WIL: Northbound off-ramp to Santa Monica Bl closed from 10pm to 5am for striping.	Dec. 6th
MO-WIL: Sepulveda Bl reduced to one lane each direction tonight, 9pm to 6am, Ohio to Wilshire, for LADWP to underground utilities.	Dec. 6th
MO-WIL: Northbound on-ramp from Santa Monica Bl closed tonight, 8pm to 6am, for setting K-rail.	Dec. 6th

Wilshire Segment (National Bl to Waterford St)

Sunset Segment (Waterford St to Getty/Sepulveda Bl)

Today's Closures

Date Posted

Latest News

Meetings

Maps

Fact Sheets

Reports and Info

Did You Know?

Useful Links

Contact Us

Daily Updates

Construction closures delivered weekdays around noon

TU-SUN: Sepulveda Bl reduced to one lane each direction from Church Ln to Homedale, 9am to 3pm, for wall construction.
Mon, Dec 06, 12:16 PM PST

MO-MUL: Number 2 southbound lane of Skirball Center Dr closed from 9pm to 6am for overhead cable relocation.
Mon, Dec 06, 11:36 AM PST

MO-MUL: Northbound off-ramp to Skirball Center Dr closed tonight, 7pm to 6am, for overhead cable relocation.
Mon, Dec 06, 11:35 AM PST

MO-MUL: Northbound on-ramp from Skirball Center Dr closed tonight, 7pm to 6am, for overhead cable relocation.
Mon, Dec 06, 11:34 AM PST

MO-MUL: Number 4, 5 northbound lanes closed from Bel Air Crest to Mulholland Dr from 11pm

Thirty-Day Construction Look Ahead



Wilshire Segment

(National to Waterford)

Key Construction Progress

Bridge barriers and railings demolished at the following undercrossings:

- Santa Monica
- Ohio
- Constitution
- Olympic



Wilshire Segment (National to Waterford)

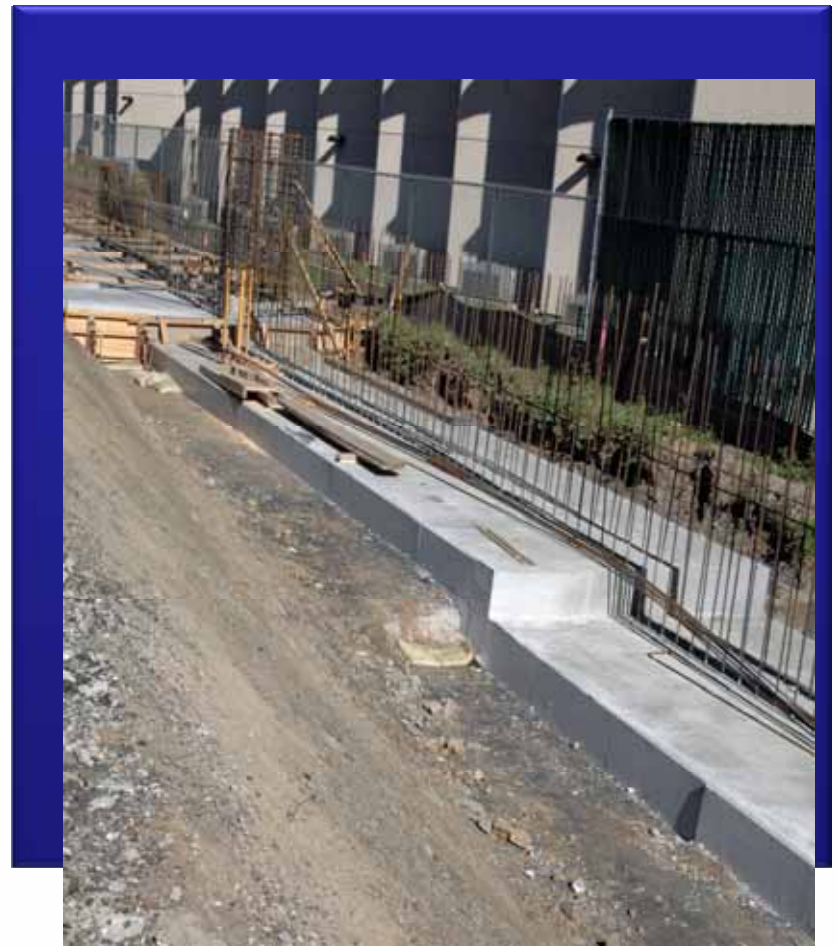
Key Construction Progress (Contd.)



Wilshire Segment

Key Construction Progress (Contd.)

- Wall 1640, along NB 405 from Ohio Av to the Salvation Army, has begun pouring and forming the cast-in-place retaining and sound wall



Wilshire Segment

Key Construction Progress (Contd.) Veterans Administration Sewer relocation

- Relocation of sewer line is being drilled under Wilshire BI, to prevent Wilshire BI closures



Wilshire Segment

Top 5 Upcoming Activities

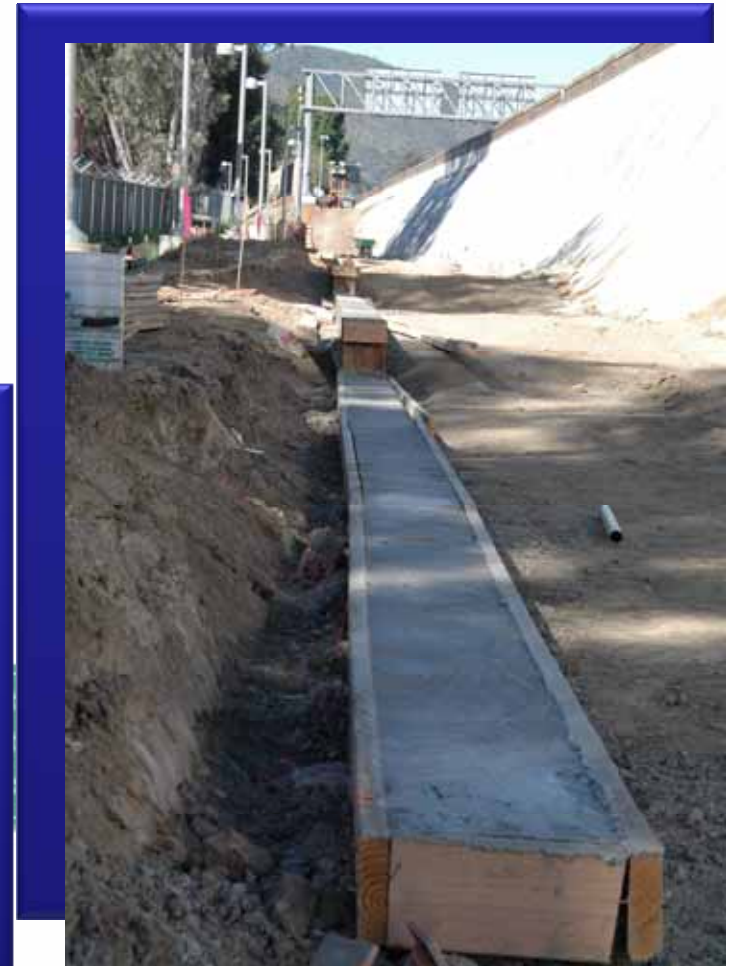
- Ohio Av utilities relocated; pile driving to begin for bridge widening
- Santa Monica abutments being prepared for bridge widening, and adjacent retaining wall set to begin construction



Wilshire Segment

Top 5 Upcoming Activities (Contd.)

- Constitution Av pile driving to begin widening of the bridge
- Olympic pile driving to begin, followed by bridge widening



Wilshire Segment

Top 5 Upcoming Activities (Contd.)

- Beloit Av sound wall will be demolished and reconstructed to allow for widening of southbound lanes, from Ohio to Olympic



Wilshire Segment

Proposed Wilshire Ramps



Wilshire Segment

2011 Projected Milestones

- Extended Ramp Closures
- Widening of WB I-10 to NB 405 connector ramp
- Widening of EB I-10 to SB 405 connector ramp
- Building of new flyover on and off-ramps at Wilshire

Location	Maximum Allowable Days
SB I-405 WB Wilshire BI on-ramp	14
SB I-405 EB Wilshire BI on-ramp	14
SB I-405 WB Wilshire BI off-ramp	14
SB I-405 EB Wilshire BI off-ramp	90
NB I-405 WB Wilshire BI on-ramp	90
NB I-405 EB Wilshire BI on-ramp	90
NB I-405 WB Wilshire BI off-ramp	90
NB I-405 EB Wilshire BI off-ramp	21
SB I-405 Santa Monica BI on-ramp	7
SB I-405 Santa Monica BI off-ramp	14
NB I-405 Santa Monica BI on-ramp	7
NB I-405 Olympic BI on-ramp	7
NB I-405 Sunset BI off-ramp	120
NB I-405 EB Sunset BI on-ramp	180
SB I-405 EB Sunset BI on-ramp	14
SB I-405 WB Sunset BI on-ramp	270
NB I-405 Moraga Dr off-ramp	15
NB I-405 Moraga Dr on-ramp	15
NB I-405 Getty Center Dr off-ramp	14
NB I-405 Skirball Center Dr off-ramp	21
NB I-405 Skirball Center Dr on-ramp	14
SB I-405 Valley Vista BI off-ramp	7
SB I-405 Valley Vista BI on-ramp	8



Wilshire Segment

Sound Wall Extension

- Request from community to extend sound wall in Westwood Hills
- Sound study analysis shows planned sound wall provides required California Department of Transportation noise reduction
- FEIR completed in 2008. Does not require noise mitigation for cemeteries as sensitive sound receptors



Sunset Segment

Top 5 Upcoming Activities

- Sunset on-ramp footing will be constructed and associated wall construction at ramps
- Sunset Bridge columns will be constructed
- Utility work will continue on Sepulveda BI
- Walls 1720/1730 (Sepulveda/Homedale) continue construction
- Montana Bridge walls will be constructed with associated utility work



Sunset Segment

Top Construction Activities for the Year

- Utility work on Sepulveda Bl
- Rebuild southern side and demo northern side of Sunset Bridge
- Wall construction (1746, 1738 A,B,C, 1730, 1720, 1718)
- Retaining wall construction at SB Getty on-ramp



Sunset Segment



Sunset Segment



Sunset Segment

Top Construction Activities for the Year (Contd.)

- Getty Center Dr undercrossing widening



Sunset Segment

Landscaping—Montana to Bronwood Alley

- Request by community for landscaping on the eastside of Sepulveda BI from Montana to Bronwood alleyway
- Project agreed to reevaluate conflict with underground utilities
- Telecommunication company agreed to re-design the location of its line
The redesign will allow:
 - 37 trees to be planted
 - Approximate spacing of 27 to 30 feet
 - Irrigation will be provided

Sunset Segment

Landscaping – Montana to Bronwood Alleyway (Contd.)

- City Approved Tree Options Planting List
- Tree option should *not* conflict with overhead lines and retaining wall clearance
- Average height between 20 to 40 feet
- 15 gallon size trees
- 10 to 15-20 years to maturity

Sunset Segment

Next Steps

- Submit preliminary design for approval to the City of Los Angeles, Bureau of Street Services and LADWP
- Community input on tree selection due by Thursday, February 10, 2011

Sunset Segment

City Approved Tree Options Planting List

Deep Coral Crape Myrtle (Preferred)



Sweet Shade (Preferred)



Sunset Segment

City Approved Tree Options Planting List (Contd.)

Oriental Sweet Gum



Sweet Bay



Sunset Segment

City Approved Tree Options Planting List (Contd.)

Chinese Flame Tree



Brisbane Box



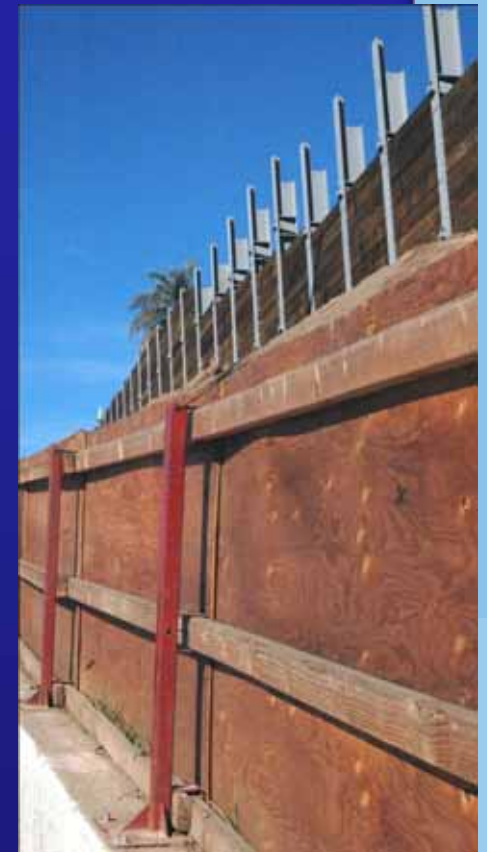
Sunset Segment

City Approved Tree Options Planting List (Contd.)

<u>Botanical Name</u>	<u>Common Name</u>	<u>Seasonal</u>
Langerstroemia Indica	Deep Coral Crape Myrtle	Summer
Hymenosporum Flavum	Sweet Shade	Spring
Koelreuteria Bipinnata	Chinese Flame Tree	Summer
Liquidambar Orientalis	Oriental Sweet Gum	Fall
Lophostemon Confertus	Brisbane Box	Summer
Laurus Nobilis	Sweet Bay	Spring

Sunset Segment

Construction Progress



Completed Sunset Bridge



Mulholland Segment (Sepulveda to Ventura)

Top Construction Activities for the Year

- Skirball Bridge demolition and reconstruction of south side of bridge
- Freeway overpass widening in Sherman Oaks
- Freeway overpass widening in Bel Air Crest
- Mulholland Bridge Construction



Mulholland Segment

(Sepulveda to Ventura)

Top 5 Upcoming Activities

- Skirball Bridge reconstruction of north side of bridge
- Relocated southbound Skirball Ramps



Mulholland Segment (Sepulveda to Ventura)

Top 5 Upcoming Activities

- Utility relocations
- Retaining walls construction at Bel Air Crest
- Retaining walls construction in Sherman Oaks (east of I-405)



Mulholland Segment

Key Construction Progress

- Massive soil nail walls are under construction near the Getty Trailhead, on the east side of the I-405. These walls will retain the hillside so an improved NB Getty on-ramp can be constructed.



Mulholland Segment

Key Construction Progress (Contd.)

- The north side of the Skirball Bridge is under reconstruction
- Retaining wall and abutment construction is on-going
- Development of work zone is anticipated to occur in early February



For More Information

Project Hotline: (213) 922-3665

I405@metro.net

www.metro.net/405

www.facebook.com/405project

Twitter: http://twitter.com/I_405

Nixle: nixle.com

