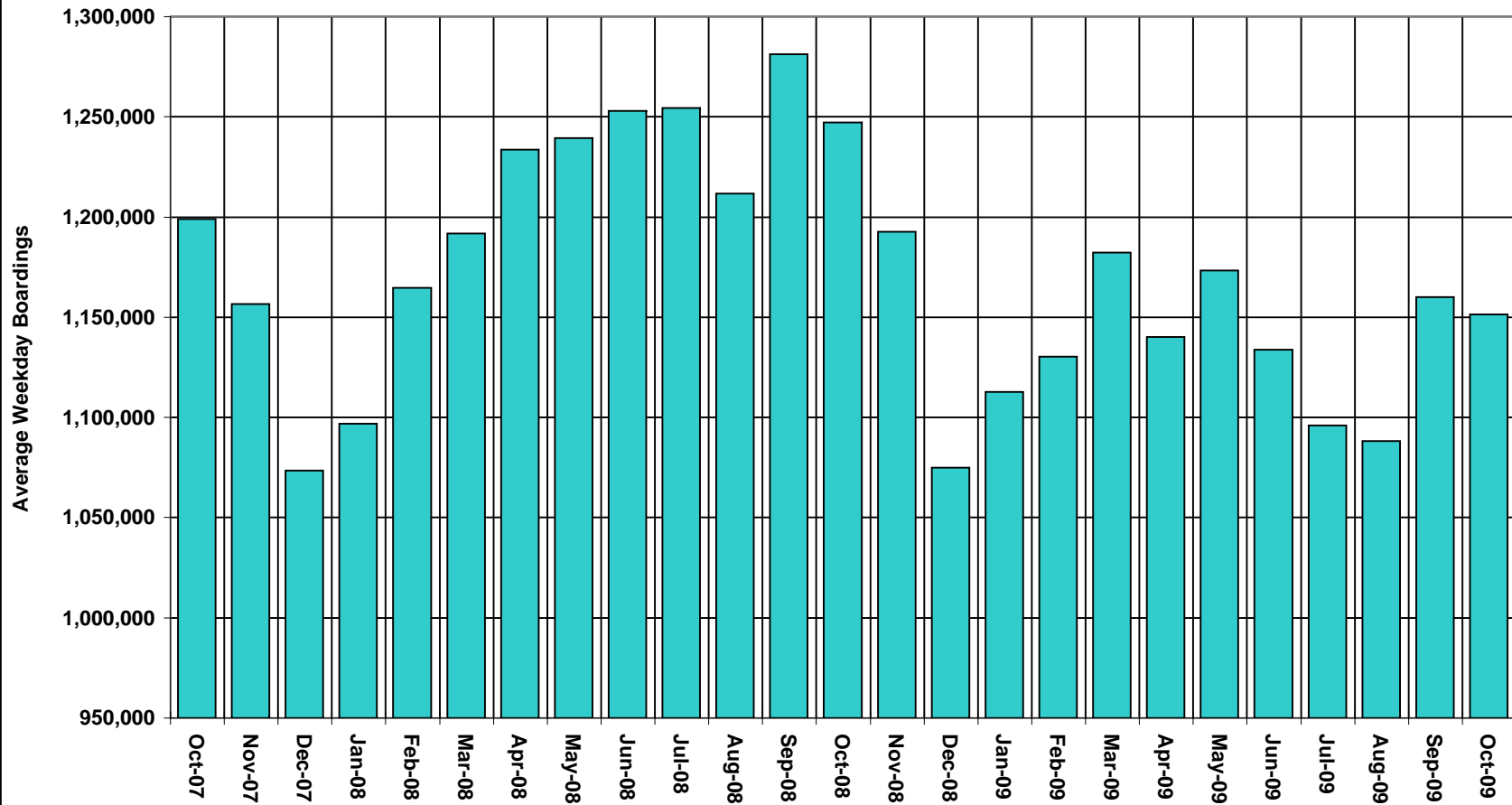




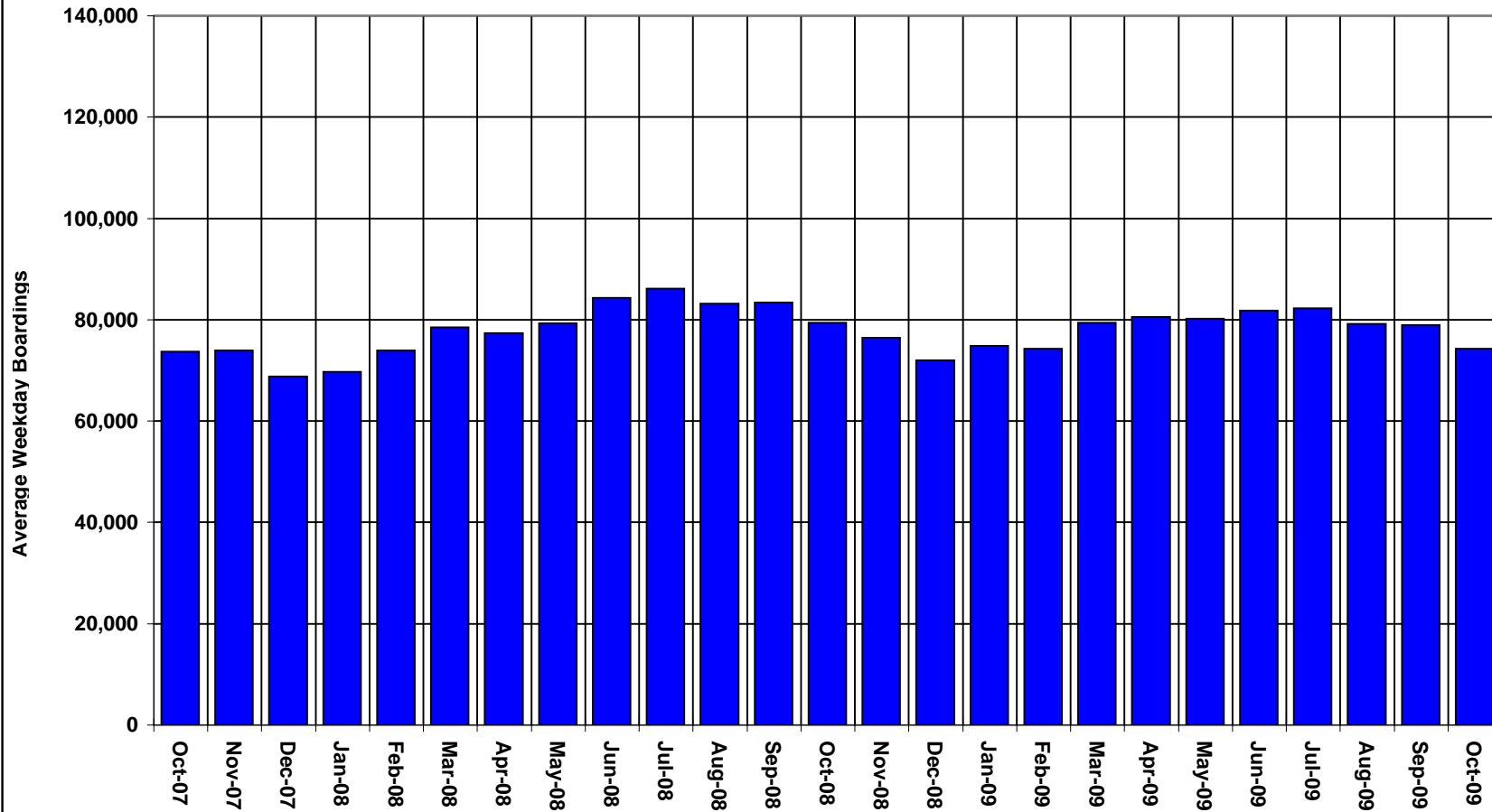
TREND IN METRO BUS LINE AVERAGE WEEKDAY BOARDINGS



Source: Service Performance Analysis



TREND IN METRO BLUE LINE AVERAGE WEEKDAY BOARDINGS

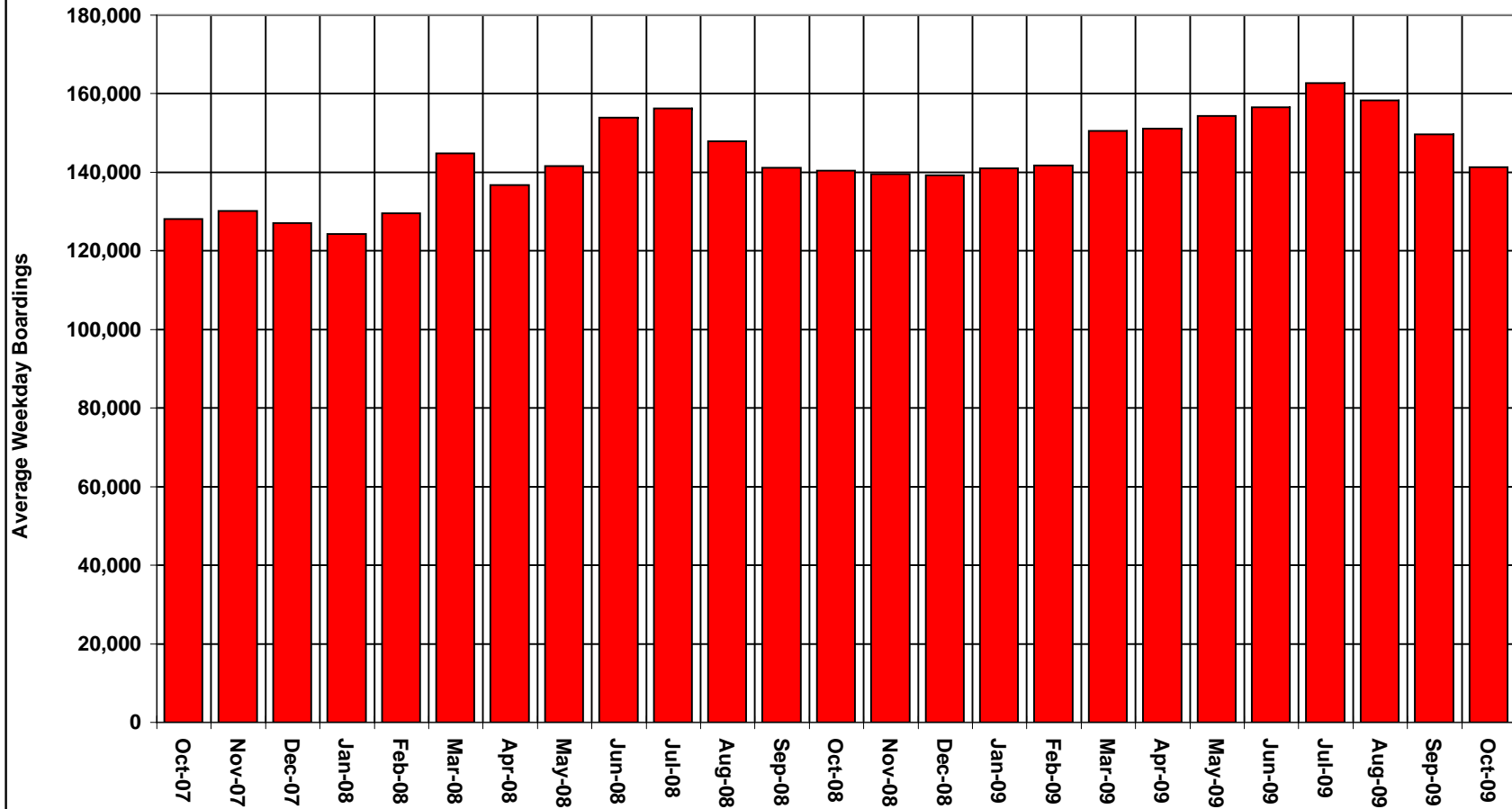


Source: Service Performance Analysis

July - Oct. '08 boarding estimates adjusted 12/22/08 to reflect revenue recording changes.



TREND IN METRO RED LINE AVERAGE WEEKDAY BOARDINGS

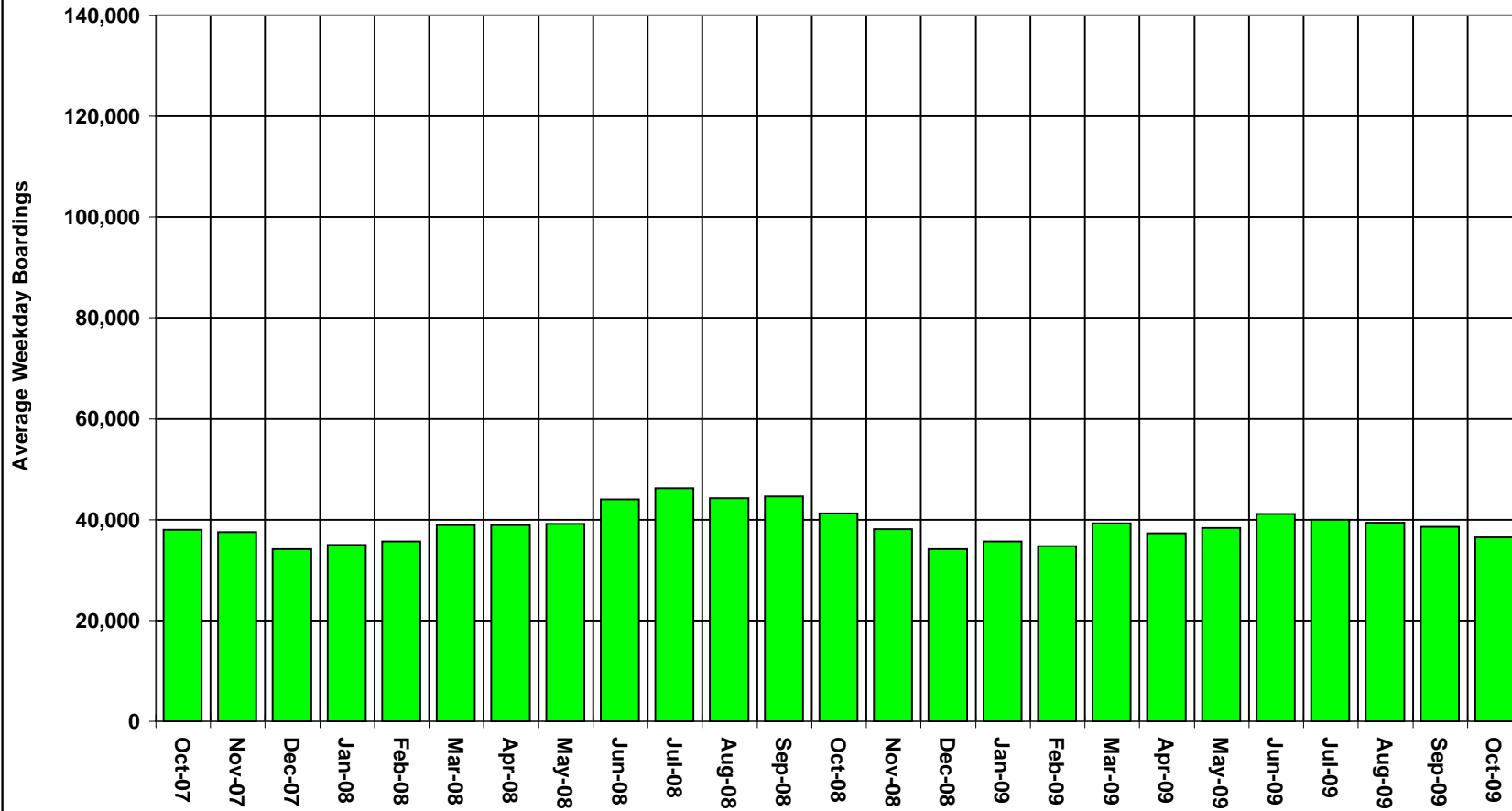


Source: Service Performance Analysis

July - Oct. '08 boarding estimates adjusted 12/22/08 to reflect revenue recording changes.



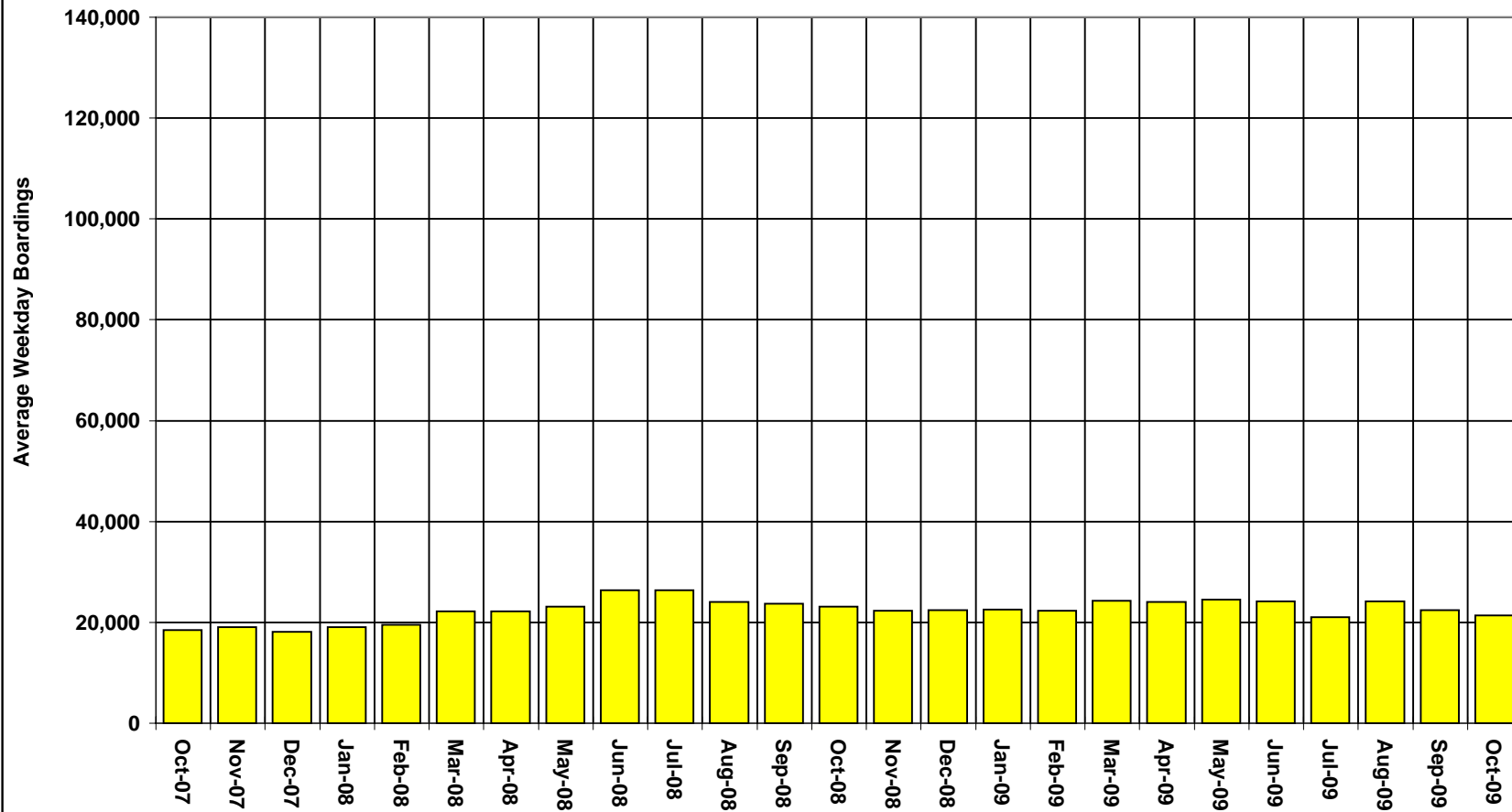
TREND IN METRO GREEN LINE AVERAGE WEEKDAY BOARDINGS



Source: Service Performance Analysis
July - Oct. '08 boarding estimates adjusted 12/22/08 to reflect revenue recording changes.



TREND IN METRO GOLD LINE AVERAGE WEEKDAY BOARDINGS



Source: Service Performance Analysis
July - Oct. '08 boarding estimates adjusted 12/22/08 to reflect revenue recording changes