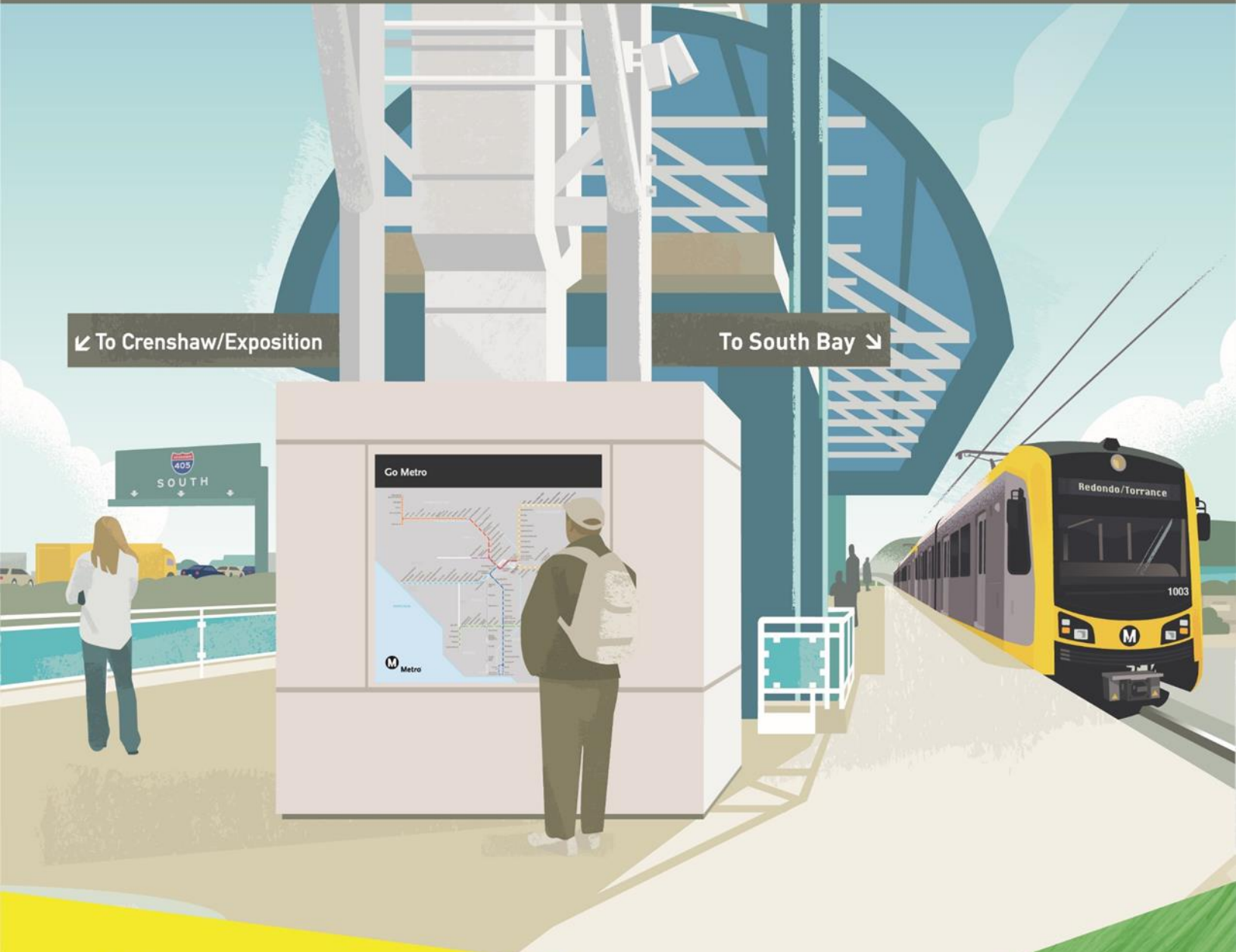


Final Environmental Impact Report

September 2025

C LINE (GREEN) EXTENSION TO TORRANCE



C Line (Green) Extension to Torrance

Final Environmental Impact Report

September 2025

Prepared for:
Los Angeles County Transportation Authority
One Gateway Plaza
Los Angeles, CA 90012

Prepared By:
STV Incorporated
1055 W. 7th Street, Suite 2900
Los Angeles, CA 90017

State Clearinghouse Number: 2021010269

Table of Contents

ES	Executive Summary	ES-1
	ES.1 Introduction.....	ES-1
	ES.2 Project Description.....	ES-2
	ES.3 Design Refinements	ES-14
	ES.4 Corrections and Additions.....	ES-18
	ES.5 Response to Comments on the Draft EIR.....	ES-18
	ES.6 Alternatives Considered in the Draft EIR.....	ES-19
	ES.7 Environmental Impact Analysis.....	ES-19
	ES.8 Significant and Unavoidable Impacts.....	ES-20
	ES.9 Summary of Environmental Impacts and Mitigation Measures	ES-21
1	Introduction	1-1
	1.1 Background.....	1-1
2	Description of the Locally Preferred Alternative	2-1
	2.1 Overview and History.....	2-1
	2.2 Project Objectives	2-5
	2.3 Description of the Locally Preferred Alternative.....	2-5
	2.4 System Components and Ancillary Facilities.....	2-25
	2.5 Construction Scenarios.....	2-30
	2.6 Project Features	2-38
	2.7 Permits and Approvals	2-39
3	Design Refinements	3-1
	3.1 Design Refinements since Draft EIR Publication	3-1
	3.2 Requirements for Recirculation of an EIR Prior to Certification	3-9
	3.3 No Significant New Information as a Result of the Locally Preferred Alternative	3-9
	3.4 Environmental Impact Analysis of the Design Refinements	3-9
4	Corrections and Additions	4-1
	4.1 Introduction.....	4-1
	4.2 Executive Summary	4-1
	4.3 Chapter 2.0 - Project Description	4-17
	4.4 Chapter 3.0 - Introduction.....	4-23
	4.5 Chapter 3.1 - Transportation.....	4-26
	4.6 Chapter 3.2 - Land Use and Planning	4-27
	4.7 Chapter 3.3 – Visual and Aesthetics.....	4-34
	4.8 Chapter 3.4 - Air Quality.....	4-34
	4.9 Chapter 3.5 - Greenhouse Gas Emissions	4-38
	4.10 Chapter 3.6 - Noise and Vibration.....	4-40
	4.11 Chapter 3.7 - Biological Resources	4-63
	4.12 Chapter 3.8 - Geology and Soils	4-75
	4.13 Chapter 3.9 - Hazardous Materials.....	4-77
	4.14 Chapter 3.10 - Hydrology and Water Quality.....	4-81
	4.15 Chapter 3.11 - Utilities and Service Systems.....	4-83
	4.16 Chapter 3.12 - Energy Resources	4-85
	4.17 Chapter 3.13 - Cultural Resources.....	4-86
	4.18 Chapter 3.14 - Tribal Cultural Resources.....	4-91

4.19 Chapter 3.15 - Public Services 4-97

4.20 Other CEQA Considerations 4-98

4.21 Chapter 4.0 - Evaluation of Alternatives 4-98

4.22 Chapter 5.0 – References 4-157

4.23 Appendix 2-A – Select ACE Drawings 4-157

4.24 Appendix 2-C – Project Features 4-157

4.25 Appendix 3.06-C – Vibration Detail Maps 4-159

5 Responses to Comments on the Draft EIR 5-1

5.1 Introduction..... 5.1-1

5.2 Major Topic Responses 5.2-1

5.3 Responses to Public Agencies 5.3-1

5.4 Responses to Groups and Organizations 5.4-1

5.5 Responses to Individual Comments (1-337)..... 5.5-1

5.5 Responses to Individual Comments (338-663) 5.5-134

5.5 Responses to Individual Comments (664-1326) 5.5-229

5.5 Responses to Individual Comments (1326-1991) 5.5-340

5.6 Responses to Public Hearing Comments..... 5.6-1

6 References 6-1

7 Acronyms and Abbreviations..... 7-1

8 Lis of Preparers 8-1

Appendices

Appendix A: Public Engagement Report

Appendix B: Select Advanced Conceptual Engineering Drawings – Locally Preferred Alternative

Appendix C: Public Comments on the Draft EIR

Figures

Figure ES-1. Project Location and Regional Vicinity..... ES-3

Figure ES-2. Locally Preferred Alternative – Looking South between 165th Street and 168th Street ES-5

Figure ES-3. Locally Preferred Alternative – Looking South of 170th Street ES-6

Figure ES-4. Locally Preferred Alternative – Looking South at 182nd Street..... ES-7

Figure ES-5. Locally Preferred Alternative – Redondo Beach TC Station Layout ES-9

Figure ES-6. Locally Preferred Alternative – Torrance TC Station Layout..... ES-10

Figure ES-7. Locally Preferred Alternative – Overview ES-11

Figure 1-1. Hybrid Alternative/Locally Preferred Alternatives 1-3

Figure 2.1 1. Project Location and Regional Vicinity..... 2-2

Figure 2.1 2. Project Area..... 2-3

Figure 2.3 1. Locally Preferred Alternative – Overview 2-7

Figure 2.3 2. Locally Preferred Alternative – Looking South Between Inglewood Avenue and Manhattan Beach Boulevard 2-8

Figure 2.3 3. Locally Preferred Alternative – Looking South of 162nd Street 2-9

Figure 2.3 4. Locally Preferred Alternative – Looking South Between 165th Street and 168th Street ... 2-10

Figure 2.3 5. Locally Preferred Alternative – Looking South at 170th Street Bridge 2-10

Figure 2.3 6. Locally Preferred Alternative – Looking South of 170th Street 2-11

Figure 2.3 7. Locally Preferred Alternative – Looking South at Artesia Boulevard Bridge 2-11

Figure 2.3 8. Locally Preferred Alternative – Looking South between Artesia Boulevard and Grant Avenue
..... 2-12

Figure 2.3 9. Locally Preferred Alternative – Looking South at Grant Avenue Bridge 2-12

Figure 2.3 10. Locally Preferred Alternative – Looking South at 182nd Street 2-13

Figure 2.3 11. Locally Preferred Alternative – Looking South Along ROW Between 186th Street and
Hawthorne Boulevard 2-14

Figure 2.3 12. Locally Preferred Alternative – Looking South between 190th Street and Prairie Avenue.....
..... 2-16

Figure 2.3 13. Locally Preferred Alternative – Vertical Profile Diagram 2-18

Figure 2.3 14. Typical Below Grade Crossing for Light Rail and At-Grade Freight Crossing 170th Street 2-19

Figure 2.3 15. Locally Preferred Alternative – Redondo Beach TC Station Layout 2-21

Figure 2.3 16. Locally Preferred Alternative – Renderings of At-Grade Station at Redondo Beach TC... 2-22

Figure 2.3 17. Locally Preferred Alternative – Torrance TC Station Layout 2-24

Figure 2.3 18. Locally Preferred Alternative – Renderings of Torrance TC Station (Terminus) 2-25

Figure 2.4 1. Example Metro Light Rail Vehicle 2-26

Figure 2.4 2. Typical Overhead Contact System 2-27

Figure 2.4 3. Typical TPSS Facility 2-28

Figure 2.4 4. TPSS Locations 2-29

Figure 2.4 5. Typical Train Communications and Signaling Building 2-30

Figure 2.5 1. Construction Staging Sites 2-34

Figure 2.5 2. Construction Staging Locations: Sites 1-5 2-35

Figure 2.5 3. Construction Staging Locations: Sites 6-8 2-36

Figure 3.1-1. Design Refinements since the Draft EIR Publication 3-5

Figure 3.1-2. Design Refinements since the Draft EIR Publication Locations: Sites 1-2 3-6

Figure 3.1-3. Design Refinements since the Draft EIR Publication Locations: Sites 3-5 3-7

Figure 3.1-4. Design Refinements since the Draft EIR Publication Locations: Sites 6-7 3-8

Figure 3.4-1. Area of TPSS Site 1B in the Draft EIR ACE (Top) and Final EIR ACE (Bottom) 3-10

Figure 3.4-2. Area of TPSS Site 5B in the Draft EIR ACE (Top) and Final EIR ACE (Bottom) 3-11

Figure 3.4-3. Manhattan Beach Boulevard Crossing in Draft EIR ACE (left) and Final EIR ACE (right)..... 3-23

Figure 3.4-4. Proposed ROW South of 190th Street in Draft EIR ACE (top) and Final EIR ACE
(bottom) 3-29

Figure 3.4-5. Proposed ROW in the Vicinity of Prairie Avenue in Draft EIR ACE (top) and Final EIR ACE
(bottom) 3-29

Figure 3.4-6. Proposed ROW between Prairie Avenue and Del Amo Boulevard in Draft EIR ACE (top) and
Final EIR ACE (bottom) 3-30

Figure 3.4-7. Proposed ROW North of Del Amo Boulevard in Draft EIR ACE (top) and Final EIR ACE
(bottom) 3-30

Figure 3.4-8. Proposed ROW South of Del Amo Boulevard in Draft EIR ACE (top) and Final EIR ACE
(bottom) 3-31

Figure 3.4-9. Prairie Avenue in Draft EIR ACE (left) and Final EIR ACE (right) 3-39

Figure 3.4-10. Del Amo Boulevard in Draft EIR ACE (left) and Final EIR ACE (right) 3-40

Figure 3.4-11. Torrance Transit Center Area Construction Staging in Draft EIR (left) and Final EIR
(right) 3-48

Figure 4.1. LPA Construction Noise Impacts (1 of 4).....4-111
Figure 4.2. LPA Construction Noise Impacts (2 of 4).....4-112
Figure 4.3. LPA Construction Noise Impacts (3 of 4).....4-113
Figure 4.4. LPA Construction Noise Impacts (4 of 4).....4-114
Figure 4.5. LPA - Mitigated Operational Noise Impacts (1 of 5)4-115
Figure 4.6. LPA – Mitigated Operational Noise Impacts (2 of 5).....4-116
Figure 4.7. LPA – Mitigated Operational Noise Impacts (3 of 5).....4-117
Figure 4.8. LPA – Mitigated Operational Noise Impacts (4 of 5).....4-118
Figure 4.9. LPA – Mitigated Operational Noise Impacts (5 of 5).....4-119
Figure 4.10. LPA Construction & Operation Vibration Impacts 1 of 334-121
Figure 4.11. LPA Construction & Operation Vibration Impacts 2 of 334-122
Figure 4.12. LPA Construction & Operation Vibration Impacts 3 of 334-123
Figure 4.13. LPA Construction & Operation Vibration Impacts 4 of 334-124
Figure 4.14. LPA Construction & Operation Vibration Impacts 5 of 334-125
Figure 4.15. LPA Construction & Operation Vibration Impacts 6 of 334-126
Figure 4.16. LPA Construction & Operation Vibration Impacts 7 of 334-127
Figure 4.17. LPA Construction & Operation Vibration Impacts 8 of 334-128
Figure 4.18. LPA Construction & Operation Vibration Impacts 9 of 334-129
Figure 4.19. LPA Construction & Operation Vibration Impacts 10 of 334-130
Figure 4.20. LPA Construction & Operation Vibration Impacts 11 of 334-131
Figure 4.21. LPA Construction & Operation Vibration Impacts 12 of 334-132
Figure 4.22. LPA Construction & Operation Vibration Impacts 13 of 334-133
Figure 4.23. LPA Construction & Operation Vibration Impacts 14 of 334-134
Figure 4.24. LPA Construction & Operation Vibration Impacts 15 of 334-135
Figure 4.25. LPA Construction & Operation Vibration Impacts 16 of 334-136
Figure 4.26. LPA Construction & Operation Vibration Impacts 17 of 334-137
Figure 4.27. LPA Construction & Operation Vibration Impacts 18 of 334-138
Figure 4.28. LPA Construction & Operation Vibration Impacts 19 of 334-139
Figure 4.29. LPA Construction & Operation Vibration Impacts 20 of 334-140
Figure 4.30. LPA Construction & Operation Vibration Impacts 21 of 334-141
Figure 4.31. LPA Construction & Operation Vibration Impacts 22 of 334-142
Figure 4.32. LPA Construction & Operation Vibration Impacts 23 of 334-143
Figure 4.33. LPA Construction & Operation Vibration Impacts 24 of 334-144
Figure 4.34. LPA Construction & Operation Vibration Impacts 25 of 334-145
Figure 4.35. LPA Construction & Operation Vibration Impacts 26 of 334-146
Figure 4.36. LPA Construction & Operation Vibration Impacts 27 of 334-147
Figure 4.37. LPA Construction & Operation Vibration Impacts 28 of 334-148
Figure 4.38. LPA Construction & Operation Vibration Impacts 29 of 334-149
Figure 4.39. LPA Construction & Operation Vibration Impacts 30 of 334-150
Figure 4.40. LPA Construction & Operation Vibration Impacts 31 of 334-151
Figure 4.41. LPA Construction & Operation Vibration Impacts 32 of 334-152
Figure 4.42. LPA Construction & Operation Vibration Impacts 33 of 334-153

Figure 5.2 1 Human/Structural Response to Typical Vibration Sources 5.2-12
Figure 5.2 2. Representative At-Grade Cross-Section..... 5.2-19
Figure 5.2 3. Representative Trench Cross-Section 5.2-20
Figure 5.2 4. Representative Cross-Section at Narrowest Areas of the ROW 5.2-20

Tables

Table ES-1. Permits and Approvals	ES-14
Table ES-2. Design Refinements since the Draft EIR Publication	ES-15
Table ES-3. Summary of Environmental Impacts for the Locally Preferred Alternative	ES-20
Table ES-4. Summary of Alternatives' Environmental Impacts	ES-22
Table ES-5. Summary of Transportation Impacts Evaluation	ES-24
Table ES-6. Summary of Land Use Impacts Evaluation	ES-26
Table ES-7. Summary of Visual and Aesthetics Impacts Evaluation	ES-27
Table ES-8. Summary of Air Quality Impacts Evaluation	ES-29
Table ES-9. Summary of Greenhouse Gas Emissions Impacts Evaluation	ES-31
Table ES-11. Summary of Biological Resources Impacts Evaluation	ES-36
Table ES-12. Summary of Geology, Soils, and Paleontological Resources Impacts Evaluation	ES-44
Table ES-13. Summary of Hazards and Hazardous Materials Impacts Evaluation	ES-47
Table ES-14. Summary of Hydrology and Water Quality Impacts Evaluation	ES-50
Table ES-15. Summary of Utilities and Service Systems Impacts Evaluation	ES-54
Table ES-16. Summary of Energy Impacts Evaluation	ES-54
Table ES-17. Summary of Cultural Resources Impacts Evaluation	ES-55
Table ES-18. Summary of Tribal Cultural Resources Impacts Evaluation	ES-57
Table ES-19. Summary of Public Services Impacts Evaluation	ES-61
Table 2.4 1. TPSS Sites	2-28
Table 2.5 1. LPA – Construction Durations	2-37
Table 2.7 1. Permits and Approvals	2-40
Table 3.1 1. Design Refinements since the Draft EIR Publication	3-2
Table 5.2 1. Ground-borne Vibration (GBV) Impact Criteria for General Vibration Annoyance Assessment	5.2-12
Table 5.2 2. FTA Ground-Borne Vibration (GBV) Impact Criteria for General Vibration Assessment ..	5.2-13