

WELCOME

C Line (Green) Community Meeting

January 18, 2024

Office of Supervisor Holly J. Mitchell



HOLLY J. MITCHELL
LOS ANGELES COUNTY SUPERVISOR ♦ 2ND DISTRICT



Mitchell.LACounty.Gov



[SupervisorHollyJMitchell](https://www.facebook.com/SupervisorHollyJMitchell)



[@HollyJMitchell](https://www.instagram.com/HollyJMitchell)



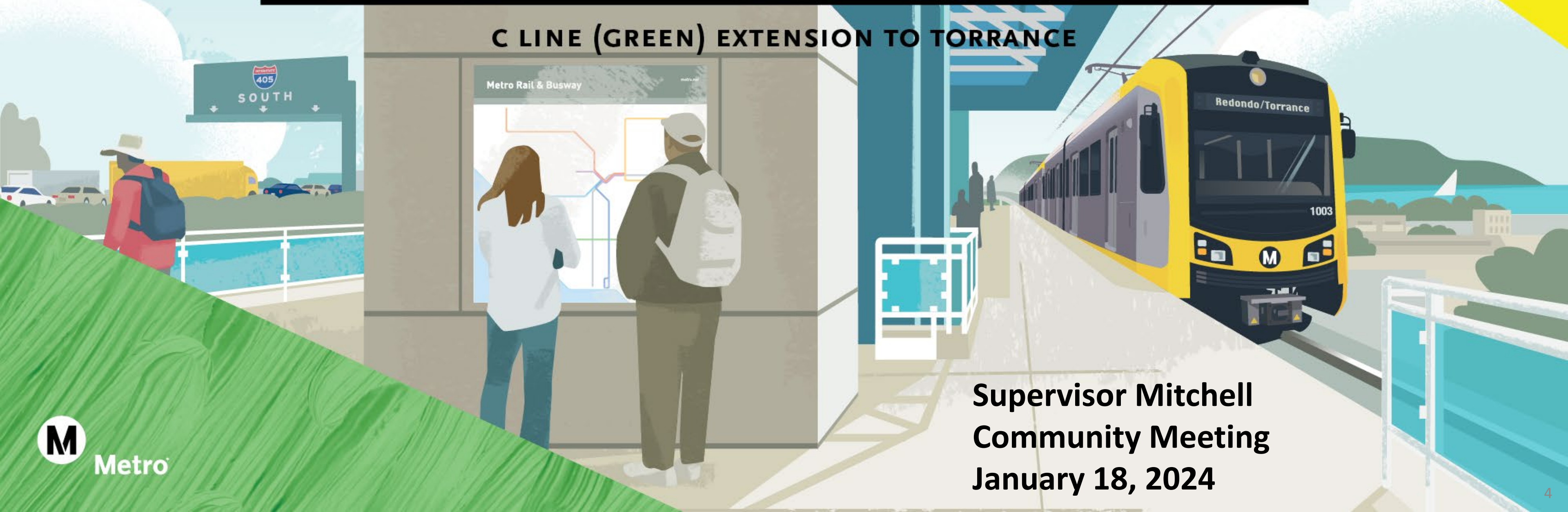
COMMUNITY AGREEMENTS

- ❖ Take space, make space
- ❖ Respect differences
- ❖ Listen to understand, not to respond
- ❖ Lean into discomfort
- ❖ Use “I” statements to speak from your own experience

← To Crens

Next stop: more rail in the South Bay.

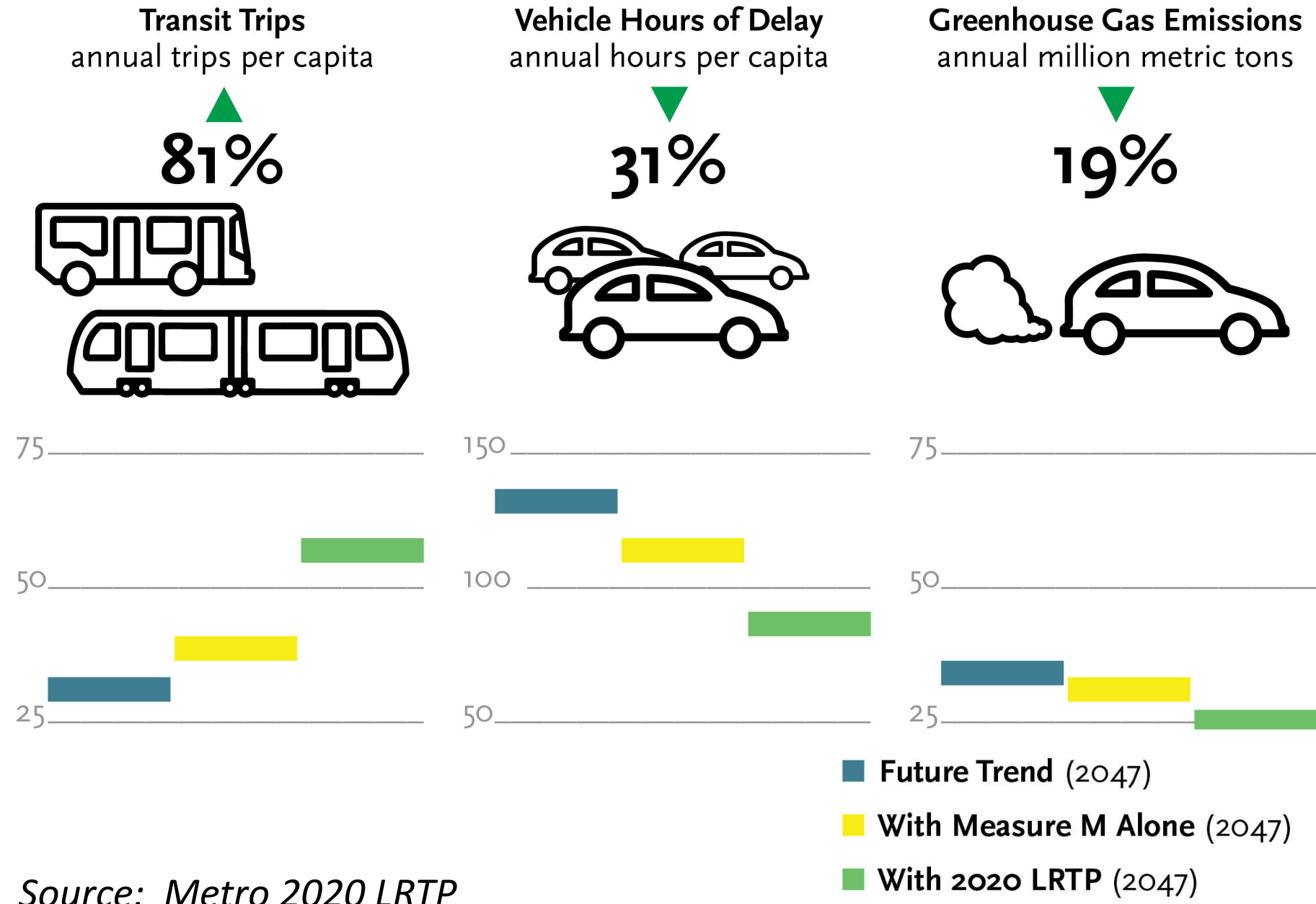
C LINE (GREEN) EXTENSION TO TORRANCE



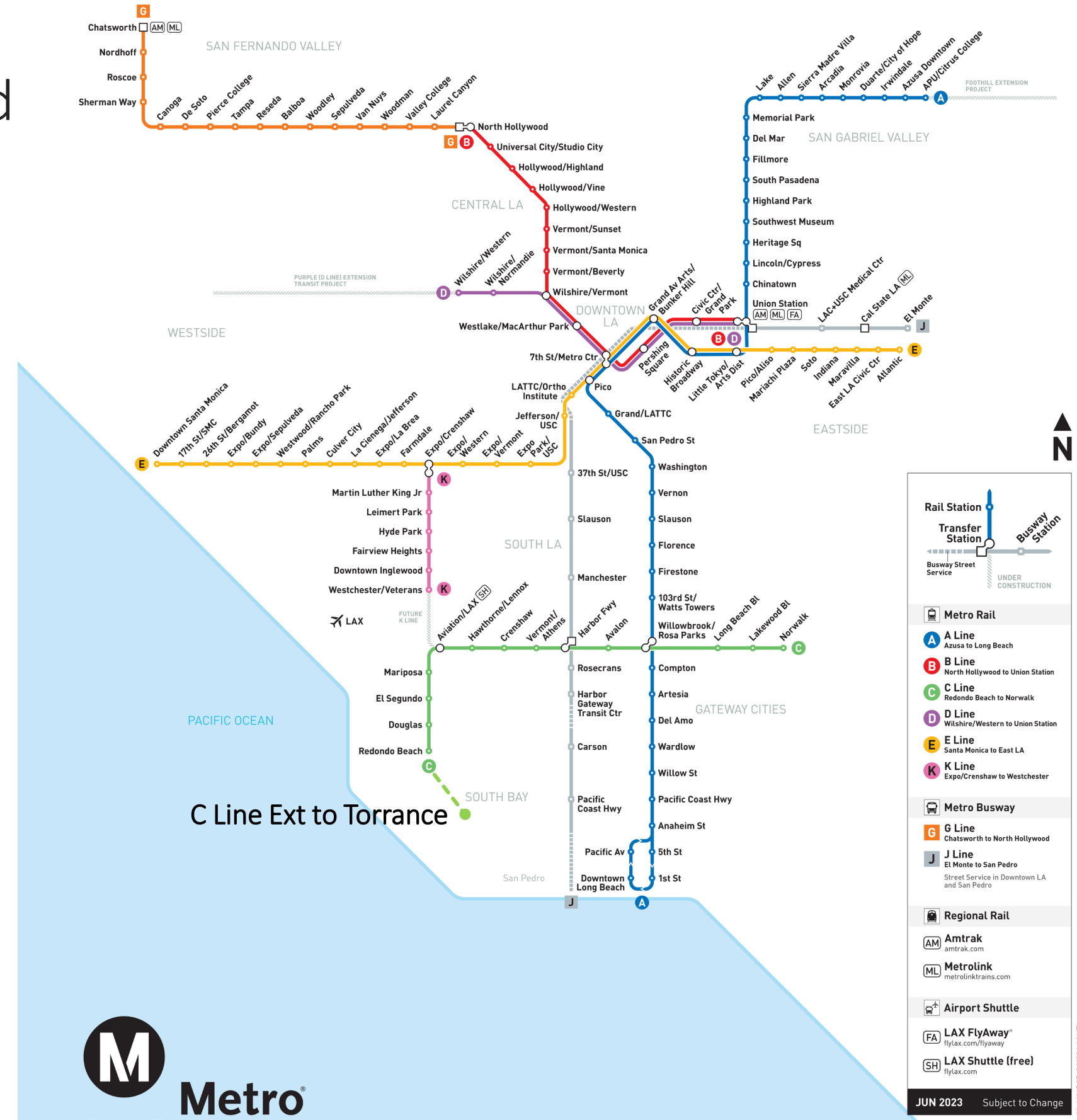
Supervisor Mitchell
Community Meeting
January 18, 2024

Metro has a plan for the future of LA County.

We are investing in a future with more mobility options, where people spend less time in traffic and fewer people drive alone.

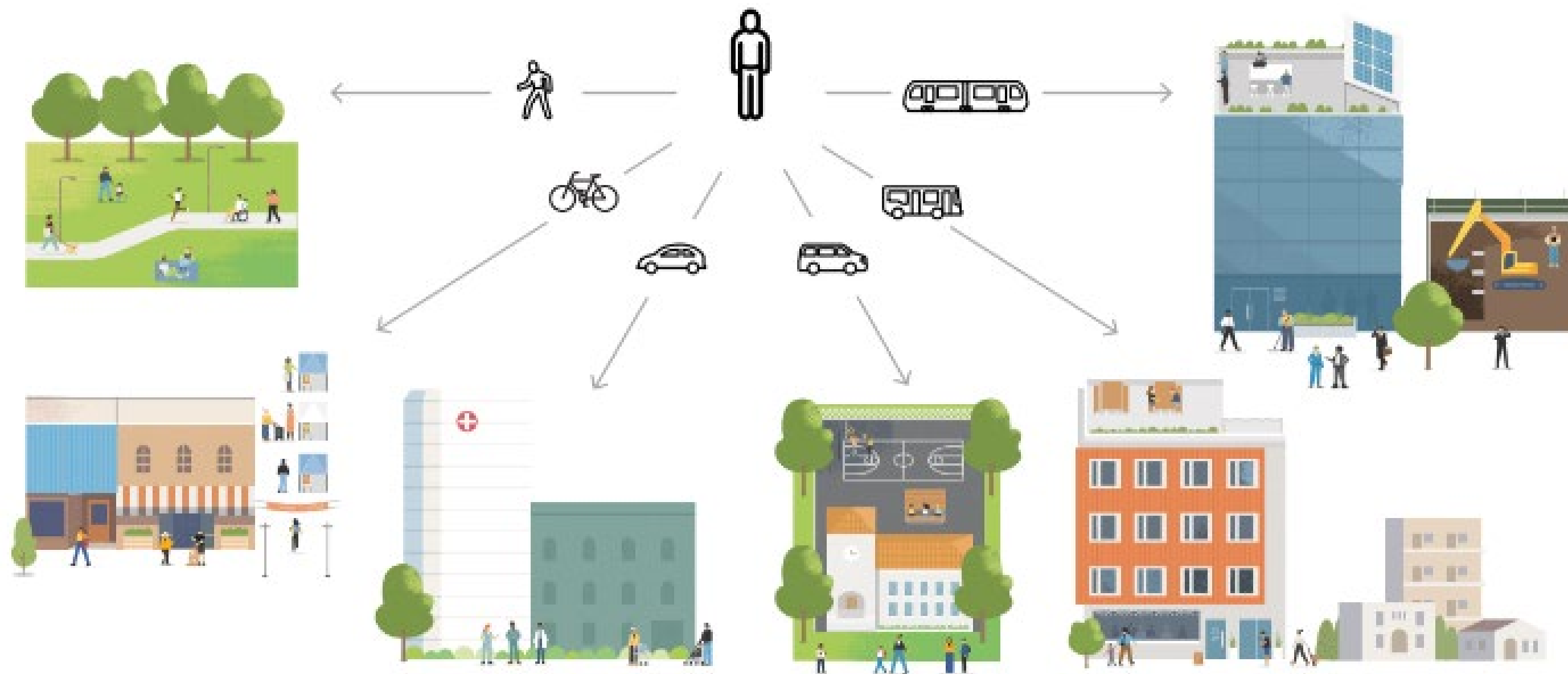


Source: Metro 2020 LRTP



Transportation improves access and reduces disparities.

Metro recognizes that **vast disparities exist across LA County**, where some neighborhoods have limited access to opportunities, including jobs, housing, community resources, and mobility options. **Transportation is an essential lever to expand access** and improve the quality of life. Equity is core to our mission.



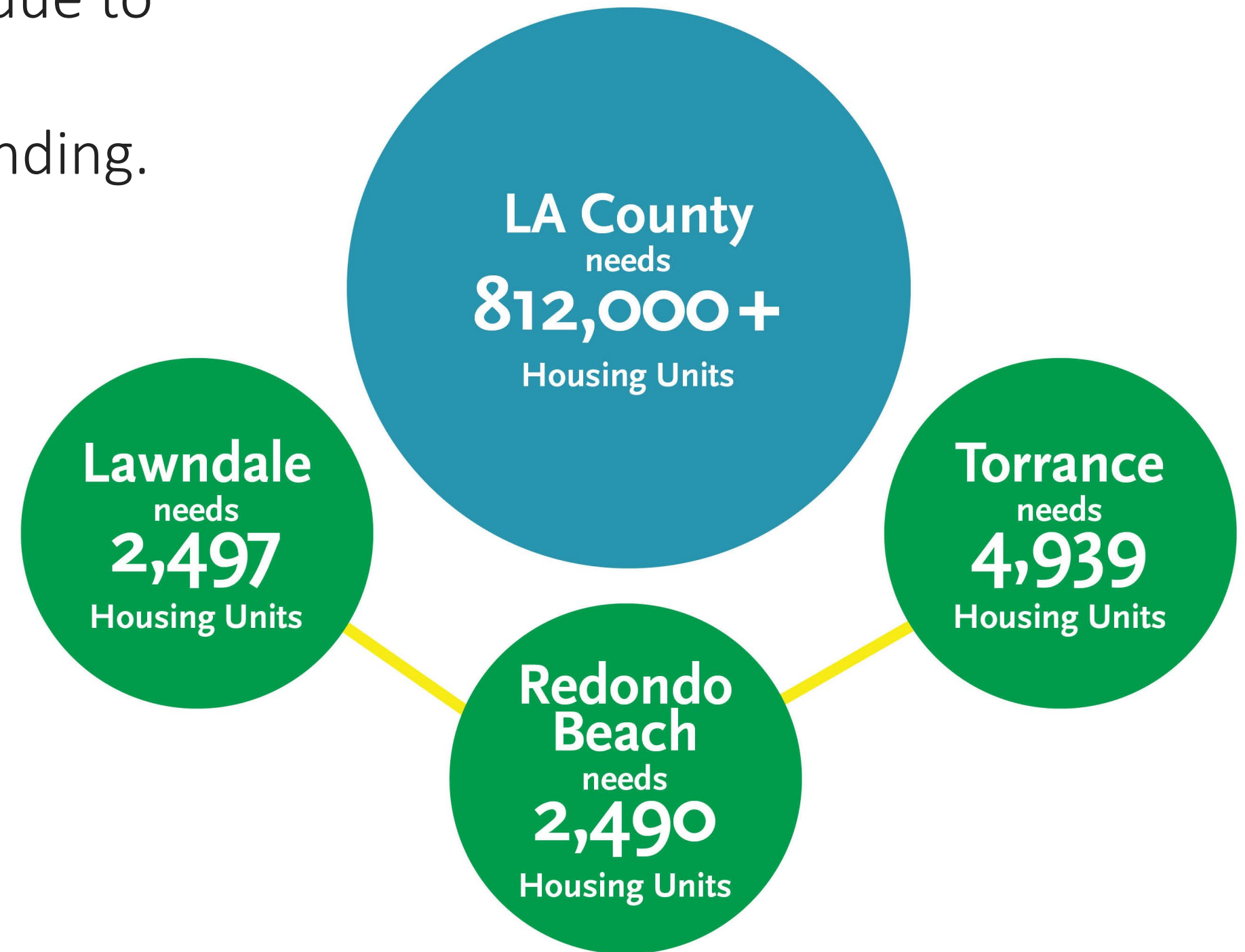
The housing affordability crisis is exacerbating congestion.

People are commuting long distances to jobs due to lack of affordable housing options, worsening regional traffic and burdening household spending.



Nearly **ONE** out of **TWO** households is cost burdened

\$2,089: Median rent for 2-bedroom unit in LA County



4,945 of these should be for **Affordable Housing**

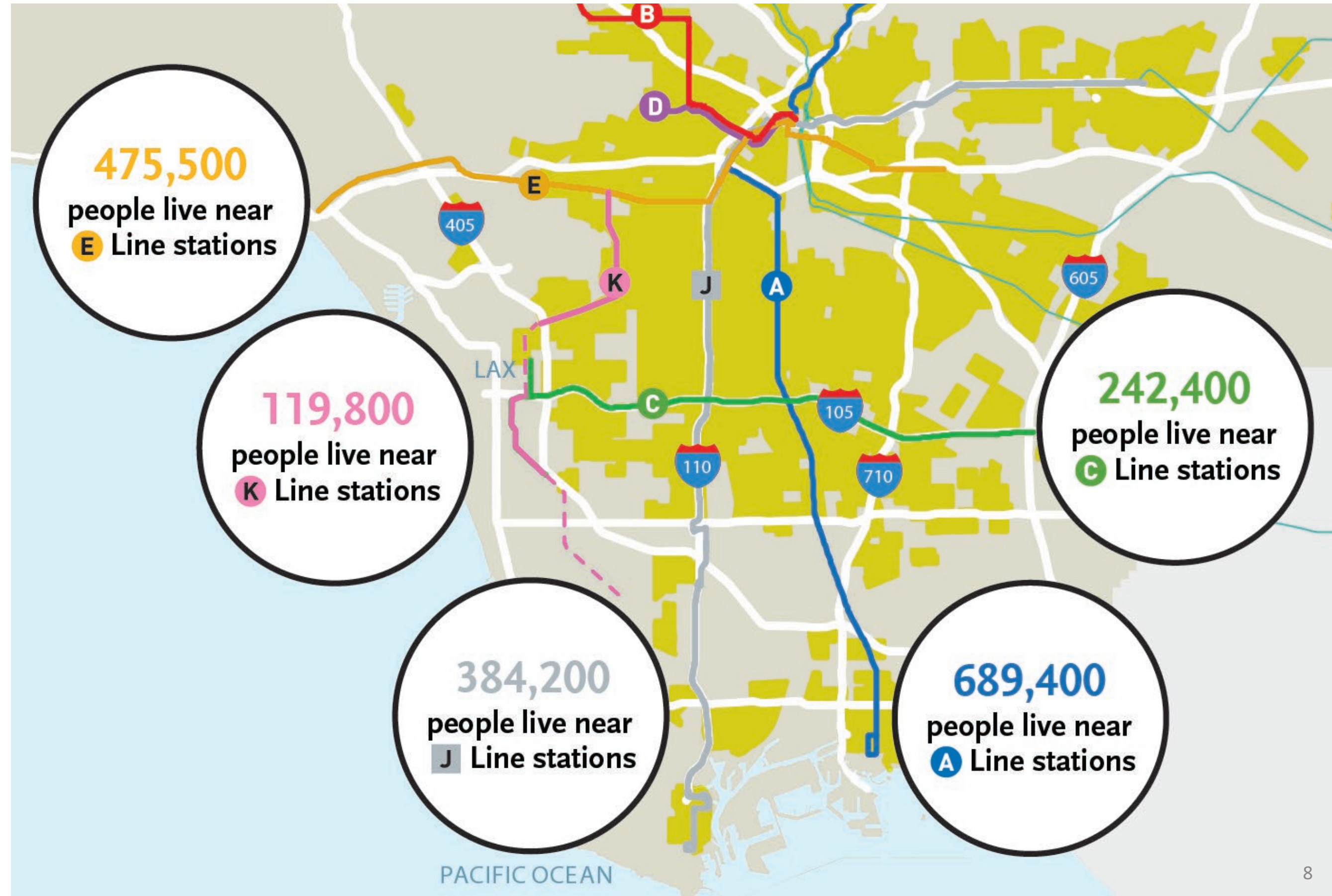
Metro is expanding rail to connect people to jobs.

98%

of LA County's population lives near a Metro or partner bus stop.

40%

of jobs are near Metro Rail, BRT or Metrolink stops.



A majority of C Line riders are low-income and BIPOC.



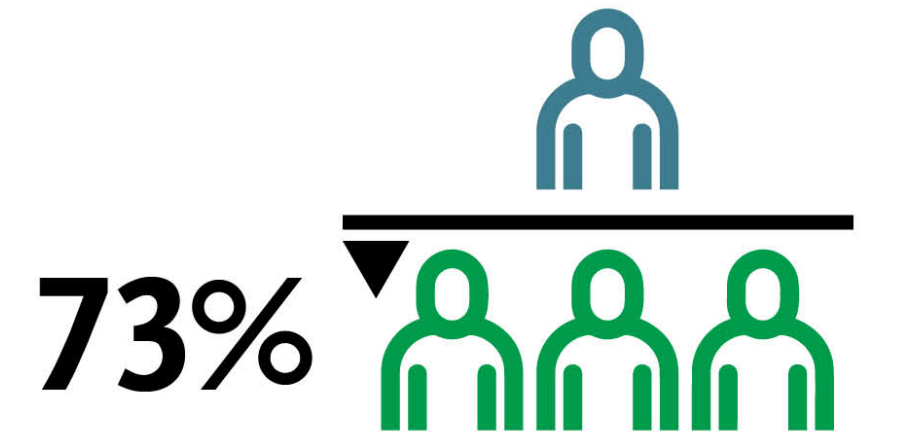
50%+

More than half rely on Metro five days a week or more



4 in 5

Identify as black, indigenous and people of color (57% Latinx)



Riders live below the very-low-income threshold



74%

Do not have access to a car for their trips



1 in 3 riders earns less than \$20,000 annually

We are planning for the future needs of the South Bay.

Today

- Major jobs center
- Severe congestion
- Long travel times
- Infrequent bus service
- High cost of housing

2045 Projections

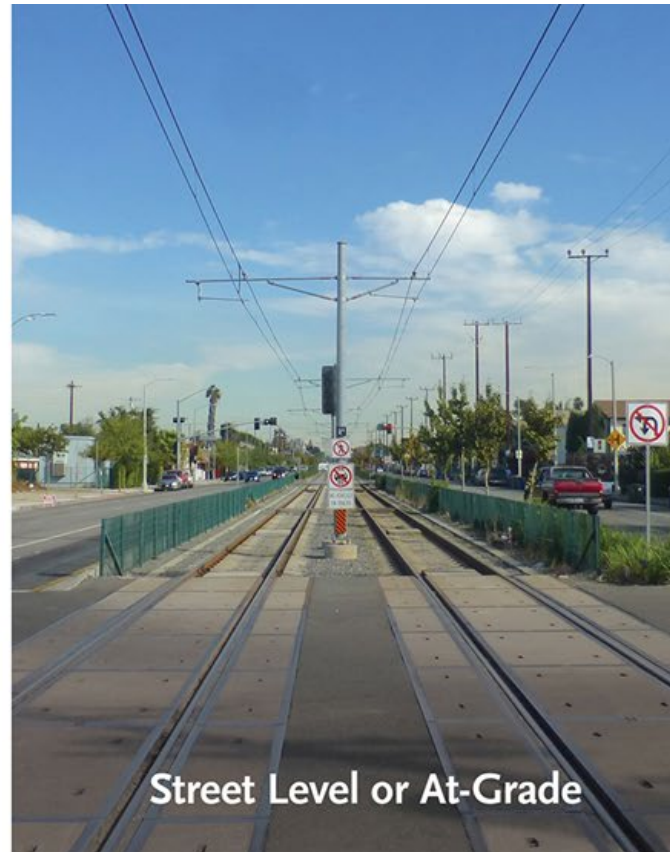
- Jobs projected to grow 2x as fast as population
- Congestion to worsen by 30%



The C Line Extension is a 4.5-mile light rail Project.

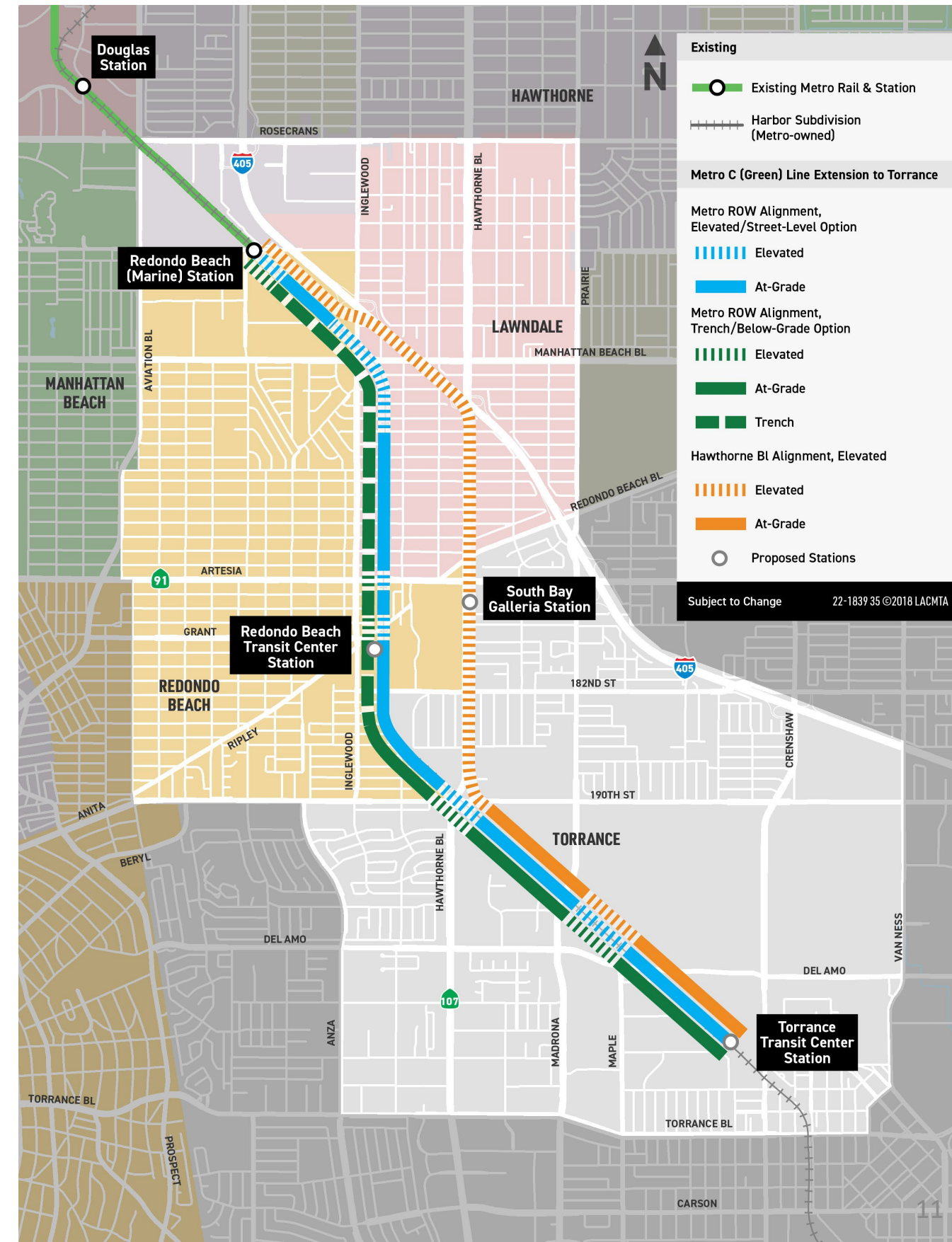
Rail Alignments studied in Draft EIR (2023)

- Metro ROW (Elevated/Street Level)
- Metro ROW Trench Option
- Hawthorne Blvd Option (Elevated)



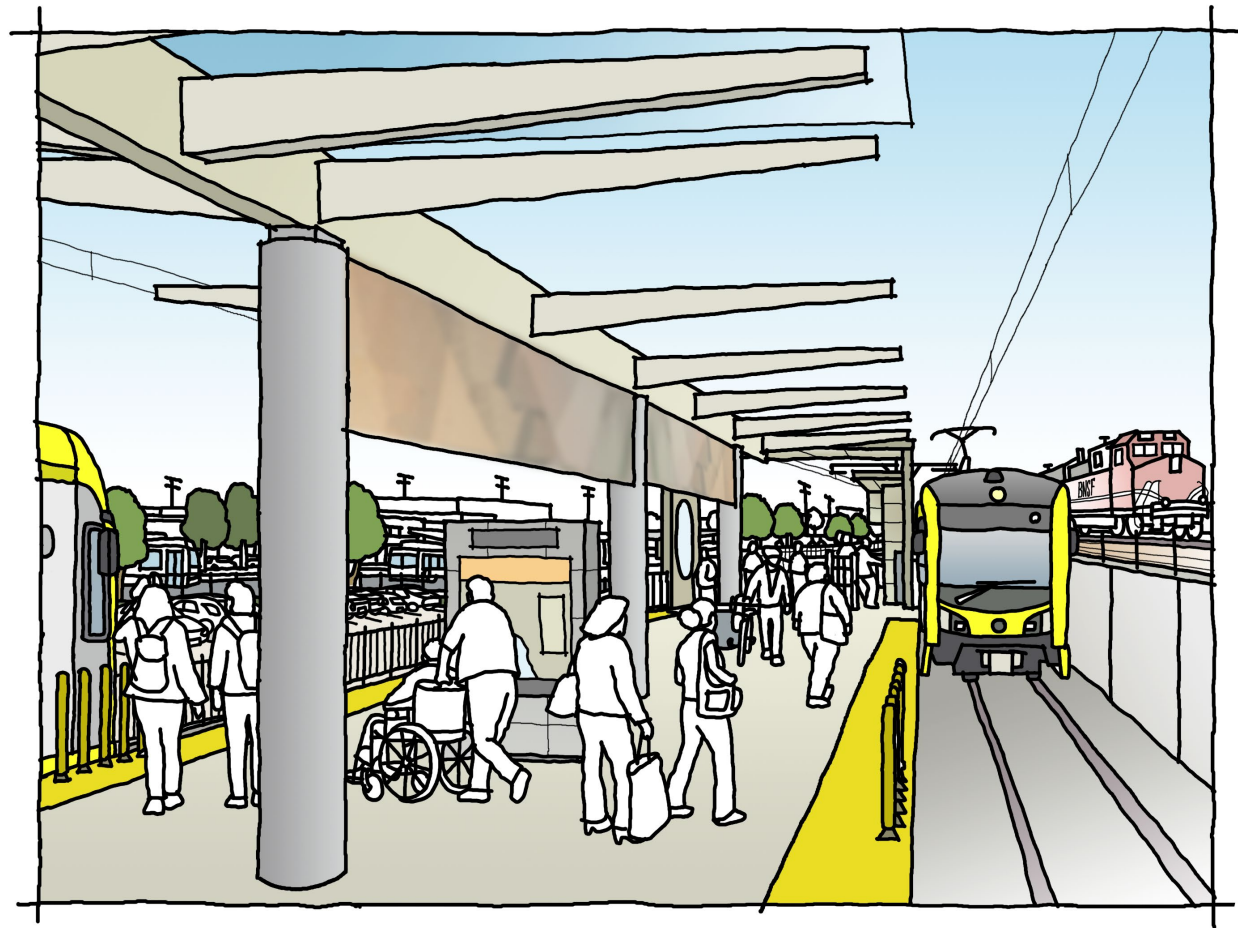
Alternatives to Project: Metro ROW Hybrid (170th/182nd St Grade Separated), High Frequency Bus, No Project

Source: Metro Draft EIR, 2023



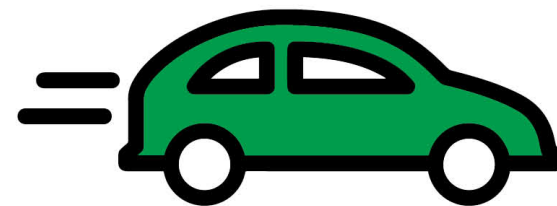
The Project is a critical piece of the regional network.

- Improve mobility
- Reduce air pollution and greenhouse gases
- Provide more equitable access
- Avoid and minimize environmental impacts
- Provide cost effective project



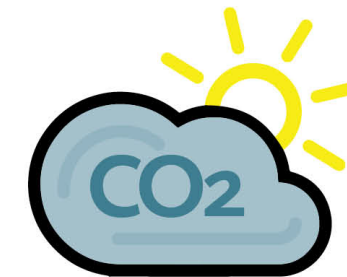
1.49 to 1.75 million

New riders per year



19.4 to 19.5 million miles

Vehicle miles saved per year



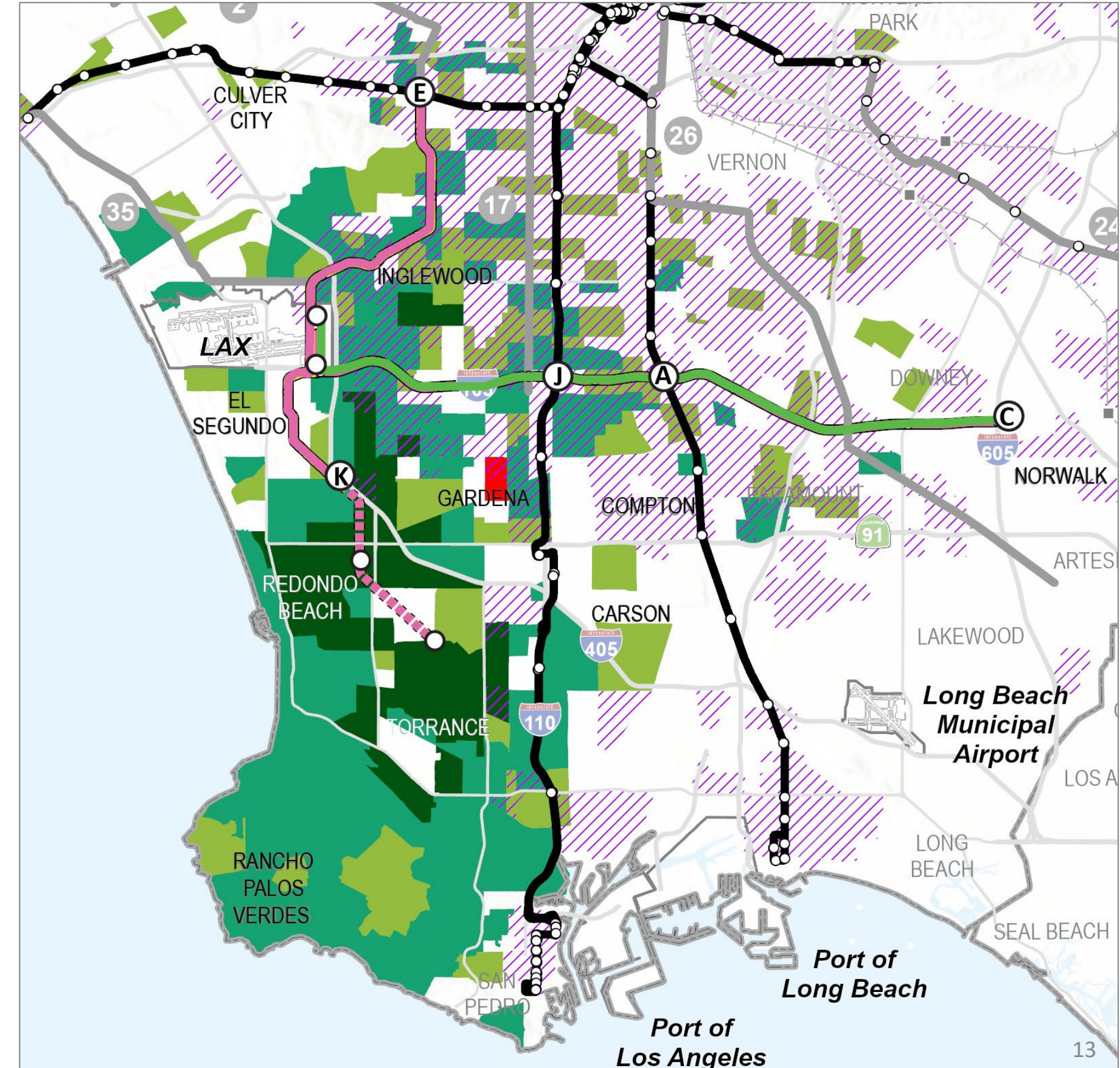
1,810 to 2,278 tons

CO2 emissions reduced per year

The Project will offer fast, frequent, reliable service.

The Project will reduce travel times in many parts of LA County, serving many equity focus communities.

- ● Willowbrook/Rosa Parks Station
- ● LAX (AMC): 19 minutes
- ● Downtown Inglewood: 26 minutes
- ● Expo/Crenshaw: 37 minutes
- ● Torrance Transit Center: 39 minutes



Source: Metro, 2023, Travel Benefit Analysis in Year 2045.
Green areas indicate travel time savings. Purple indicate EFCs.

Metro has held extensive community engagement.

Spring 2021 to Fall 2023

- Scoping Meetings: 387 attendees
- 13 Neighborhood Walks: 532 attendees*
- 4 August Open Houses: 543 attendees*
- 5 Draft EIR Public Hearings: 421 attendees*
- 8 Transit Rider Intercepts: 154 transit riders
- Door-to-Door Business Outreach: 569 businesses
- Comments: 3,402

January 2021 to November 2023

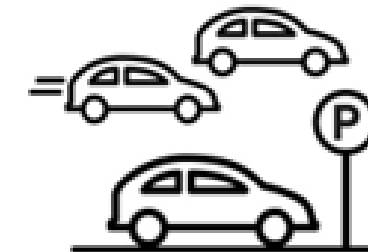
- Nearly 20,000 views on the project StoryMaps



Noise and
Vibration



Property Impacts
and Values



Traffic and
Parking



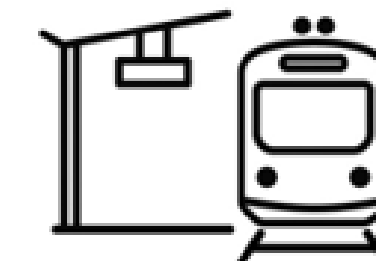
Community and
Visual Aesthetics



Public
Safety



Landscape/
Greenspace



Stations and
Connectivity



Ridership



Outreach



Construction

*Not all attendees signed into meetings and overall attendance exceeds listed amount.

The Metro Board will consider the Project this year.

Spring 2024: Metro Board will consider the staff recommendation, which seeks to:

- Meet project need and objectives
- Mitigate significant environmental impacts
- Respond to community concerns
- Align with Measure M schedule and funding available

The Metro Board will vote to select a preferred alignment, or alternative to project based on variety of factors.



Project Contact & Resources



Georgia Sheridan, AICP, Project Manager
Senior Director, Mobility Corridors

sheridang@metro.net

Mark Dierking, Director
Gateway/South Bay
Local Government & External Affairs

dierkingm@metro.net



213.922.4004



greenlineextension@metro.net



Metro.net/clineext



[@metrolosangeles](https://twitter.com/metrolosangeles)



[losangelesmetro](https://www.facebook.com/losangelesmetro)

Chris Corrao, Deputy Project Manager
Senior Manager, Mobility Corridors

corraoc@metro.net



Bit.ly/cletstory (Storymap)

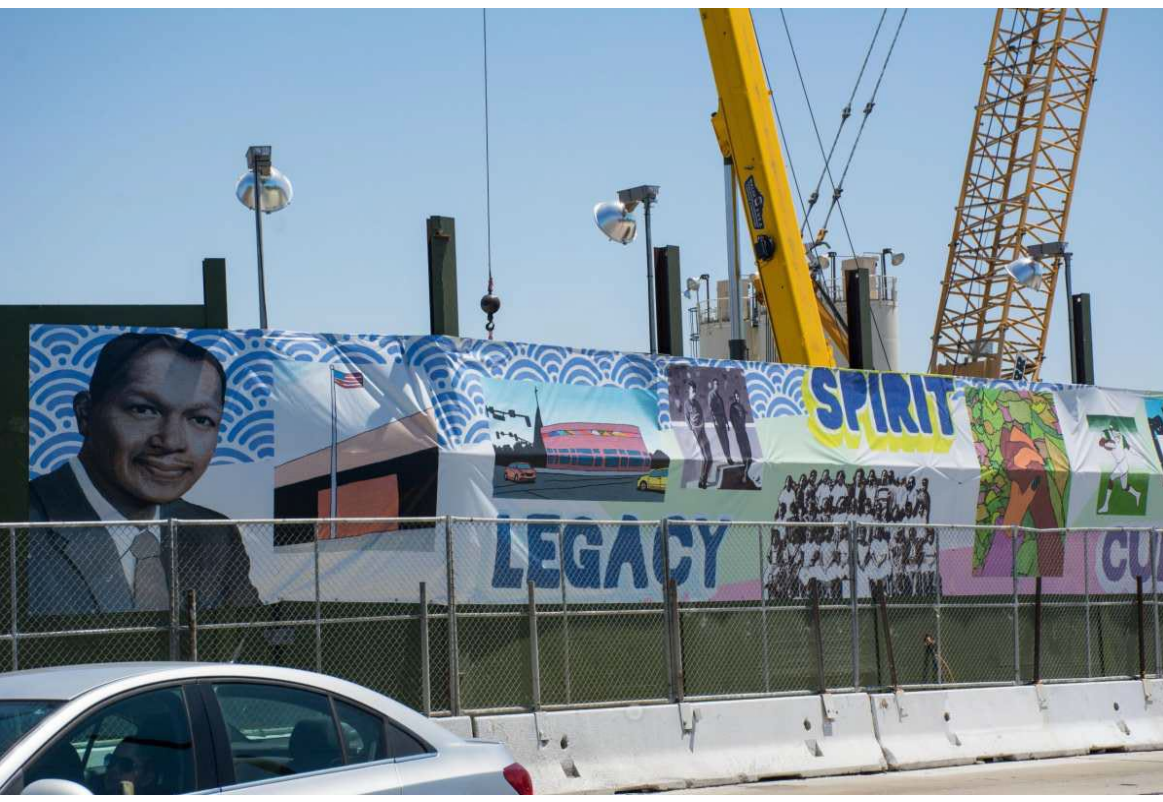


Bit.ly/cletvideo (3D Video)



Metro.net/clineext/#documents (Draft EIR
& Project Materials)

Common Elements of Metro Rail Projects





AGENDA

- ❖ Welcome & Opening
- ❖ Small Group Discussions
- ❖ Pair Group Reflections
- ❖ Close & Next Steps